

CONTENTS

Clicking on a title in this table of contents will display the corresponding section

1.	YOUR HERCULES ePLUG WIFI ADAPTER	2
1.1.	Recommendations	3
1.2.	Specifications	3
1.3.	Minimum system requirements	4
1.4.	Box contents.....	4
1.5.	LEDs overview	5
1.6.	Connectivity overview	6
2.	INSTALLING YOUR HERCULES ePLUG.....	8
2.1.	How to position your Hercules ePlug	8
2.2.	HomePlug: the partner to WiFi in your home	9
2.2.1.	Connecting two computers in a HomePlug network	9
2.2.2.	Connecting a computer to a modem, a modem router, an Internet "box" or a game console in a HomePlug network.....	9
2.2.3.	Connecting an Internet "box" to a Digital Terrestrial Television decoder in a HomePlug network	10
2.3.	You haven't yet created a HomePlug network: initial installation of Hercules ePlug WiFi Duo	11
2.4.	You have already created a HomePlug network: adding a new adapter to your network (Hercules ePlug WiFi Solo or Duo).....	22
2.5.	How to change the network password.....	32
3.	STREAMING MUSIC WITH ePLUG WIFI MUSIC.....	33
4.	MANAGING YOUR PLC NETWORK WITH HERCULES ePLUG STATION.....	34
4.1.	Downloading Hercules ePlug Station	34
4.2.	Installing Hercules ePlug Station	34
4.3.	Managing your PLC network.....	41
4.4.	Adding one or more adapters to your Hercules ePlug Station monitoring list	42
4.5.	Scanning the network.....	43
4.6.	Changing an adapter's location	43
4.7.	Changing the password for your PLC network	43
4.8.	Updating the firmware	44
4.9.	Restoring the factory default settings of the ePlug adapter connected to the PC.....	45
5.	MANAGING YOUR WIFI NETWORK WITH ePLUG WIFI MANAGER.....	46
5.1	Open ePlug WiFi Manager.....	46
5.2	Viewing your ePlug WiFi adapter's WiFi settings	47
5.3	Customizing your WiFi network	47
5.4	Installing the music streaming software.....	53
5.5	Activating a shared USB device (USB key, hard disk drive, printer).....	55
5.6	Changing your ePlug WiFi adapter's IP address.....	62
5.7	Changing your ePlug WiFi adapter's password.....	63
5.8	A versatile toolkit.....	65
5.	TECHNICAL SUPPORT.....	68
6.	WARRANTY	68
7.	ENVIRONMENTAL PROTECTION RECOMMENDATION	69

1. YOUR HERCULES ePLUG WIFI ADAPTER

PLC (Power Line Communication), also known as HomePlug, is a technology which uses your home's existing electrical wiring to efficiently transfer digital data (audio, video, Internet, other types of files) within a secure personal network. **WiFi** technology allows the wireless transfer of digital data over a fully secure connection, without the hassle of wires.

The **Hercules ePlug WiFi** adapter, which combines **PLC** and **WiFi** technologies, is an ideal solution for all those who wish to create a network as simply as possible. PLC removes the restrictions that usually prevent users from fully harnessing the convenience of WiFi communications, owing to their home's configuration (i.e. thick walls or other obstacles hindering the transmission of wireless data). By including PLC and WiFi technology, the **Hercules ePlug WiFi** adapter extends your network's coverage beyond rooms equipped with a PLC adapter, while also removing the burden of wires.

Thanks to its USB and audio ports, the Hercules ePlug WiFi adapter offers a full-featured multimedia center. You can use it to broadcast music or transfer data to a hard disk drive or a USB key, directly from the adapter.

The Hercules ePlug WiFi adapter and Hercules ePlug 200 Mini PT adapter (available as a Duo pack) connect to all your home's standard power outlets (whether on the ground floor or upstairs), transforming them into just as many accessible network connection points. Moreover, you can freely unplug Hercules ePlug adapters and plug them into different outlets in your home, according to your needs (changing the location of a computer, or of your modem router...), without having to repeat the installation or re-create your network.

A **network** comprises at least two connected devices, meaning that you simply need to connect at least one **Hercules ePlug WiFi** adapter and one PLC adapter – such as the **Hercules ePlug 200 Mini PT** – to two power outlets in your home. For instance, if you wish to broadcast music in the lounge using a computer located in a room upstairs, simply connect your computer to a Hercules ePlug 200 Mini PT adapter plugged into the nearest power outlet, and install a Hercules ePlug WiFi adapter in the lounge (you will need to connect speakers to the adapter).

Finally, with the goal of helping to protect the environment, Hercules offers **energy-saving** adapters, which conform to the European ERP (Energy Related Products) directive, guaranteeing electrical consumption of less than 1 watt when the device is in standby mode.



The HomePlug AV standard is not compatible with the Homeplug 1.0 standard corresponding to the Hercules ePlug 85 range (and other adapters conforming to this standard). Nevertheless, you are perfectly able to create a network composed of Hercules ePlug 85 adapters in your home coexisting alongside another network composed of Hercules ePlug 200 adapters.

Even though this type of device presents no danger in terms of your home's electrical wiring, you should take care to respect certain **recommendations**, set out below.

1.1. Recommendations

- Only connect the Hercules ePlug adapter to an electrical network which conforms to the security standards and specifications detailed on the device's electrical rating plate. If you are not sure about your electrical network, contact an electrician or your power supplier.
- Never open up the Hercules ePlug adapter, as doing so risks damaging its internal components.
- Do not attempt to insert any objects into the vents and openings of the Hercules ePlug adapter.
- Do not obstruct the vents and openings of the Hercules ePlug adapter.
- If you need to carry out any maintenance on your Hercules ePlug adapter, be sure to first unplug the adapter and entrust the job to a qualified professional in order to avoid the risk of electrocution.
- In order to avoid the risk of fire or electrical discharge, keep your adapter away from:
 - rain or humidity, as well as all fluids (water, chemical products and any other liquids),
 - sources of heat such as heaters, stoves and any other heat-producing devices (including amplifiers),
 - direct sunlight.
- Only plug in the Hercules ePlug adapter in a sufficiently ventilated room.
- Only connect the Hercules ePlug adapter using the included Ethernet cable.
- Unplug the Hercules ePlug adapter from its electrical outlet if you do not plan on using it again for an extended period of time.
- Unplug the Hercules ePlug adapter from its electrical outlet before cleaning. Use a soft cloth for cleaning and avoid using aerosol cleaners, water, solvent-based chemical products, benzene, alcohol or other cleaning products.
- Always keep children away from electrical outlets.

1.2. Specifications

- BCM60321 Chipset
- Compatible with the IEEE 802.3, IEEE 802.3u, IEEE 802.3x and Auto MDI/X specifications
- Compatible with the Homeplug AV standard
- Coexists with HomePlug 1.0 modules
- Encryption via the AES 128-bit security protocol
- 200 Mbits/s theoretical transfer rate
- Asynchronous transmission mode
- Modulation: OFDM, 1024/256/64 QAM, QPSK, BPSK
- 200m range over the electrical network
- Ethernet RJ45 port
- Average power consumption:
 - **ePlug WiFi**: 4.3 W in use, 0.4 W in standby mode (consumption data may vary according to your house's electrical installation)
 - **ePlug 200 Mini PT**: 3.8W when in use, 2.1W when no data is circulating, 0.4W in standby mode, enabled via the adapter's button (these values may vary depending on your home's electrical system)
- Internal power supply: 100~ 240V AC, 50/60Hz
- Electrical outlet supporting 16 amps (Hercules ePlug 200 Mini PT)
- **Secure** button, allowing you to add a Hercules ePlug adapter to an existing network
- **Reset** button for resetting WiFi and IP address parameters (Hercules ePlug WiFi) or restoring factory settings (Hercules ePlug 200 Mini PT)

- **ON/OFF** switch
- **WPS** (Wi-Fi Protected Setup™) button ensuring automatic connection to a WiFi network (Hercules ePlug WiFi only)
- **HDD/Printer** USB port for connecting a hard disk drive, a USB key or a USB printer (Hercules ePlug WiFi only)
- **Audio** (mini-jack) port for connecting multimedia speakers (Hercules ePlug WiFi only)
- Indicator lights located on adapter front face
- Wireless access point compatible with the following WiFi protocols:
 - 802.11b: 1, 2, 5.5 and 11 Mbps/s bandwidths in the 2.4 GHz range
 - 802.11g: 6, 9, 12, 18, 24, 36, 48 and 54 Mbps/s bandwidths in the 2.4 GHz range
 - 802.11n draft 1.0 and 2.0: variable bandwidths in the 2.4 GHz range, according to the selected channel's bandwidth (20 or 40 MHz). Values range from MCS0 to MCS15 and vary from 7,2 to 144,44 Mbps/s for the 20 MHz channel, and from 15 to 300 Mbps/s for the 40 MHz channel
- **DSSS/CCK** frequency range and **OFDM** modulation from 2.412 GHz to 2.484 GHz (13 channels)
- Compatible with the following security protocols:
 - **WEP** with 64 and 128 bit key lengths
 - **WPA-PSK** with TKIP or AES encryption (802.11i security protocol)
 - **WPA2-PSK** with TKIP and AES encryption (802.11i security protocol)
- **MAC address** filtering
- **WPS** (Wi-Fi Protected Setup™) mode support
- **QOS** (Quality Of Service) mode support

1.3. Minimum system requirements

To connect a device to your Hercules ePlug adapter:

- An Ethernet type network interface must be available on each device to be connected (computer, game console, modem, router, TV decoder, etc.)

To access the Internet with the Hercules ePlug adapter:

- Active Internet line
- Internet Explorer 6.0, Netscape Navigator 4.7 or Mozilla Firefox 1.0 or higher
- ADSL Ethernet modem, cable modem, Internet "Box" (Livebox®, Freebox®, Neufbox®...)

1.4. Box contents


Please verify that the following elements are present in the box:

- Depending on the pack:
 - Hercules ePlug WiFi Solo: 1 Hercules ePlug WiFi adapter
 - Hercules ePlug WiFi Duo: 1 Hercules ePlug WiFi adapter and 1 Hercules ePlug 200 Mini PT adapter
- Installation CD-ROM
- Ethernet cable (1 per adapter)



The "Hercules ePlug Station" network configuration and management software is available for download at <http://www.hercules.com>.


1.5. LEDs overview

 : HomePlug connection status LED:


- Green: very good connection (transfer rates greater than 60 Mbits/s)
- Orange: fairly good connection (transfer rates between 60 and 40 Mbits/s)
- Red: poor connection (transfer rates less than 40 Mbits/s)


Hercules ePlug WiFi



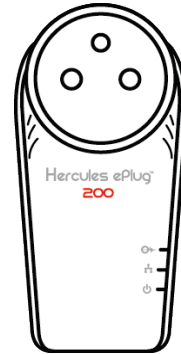
 : Ethernet connection LED:

- lit up when the Ethernet cable is connected
- flashes during data transfer

 : Power LED: flashes during traffic

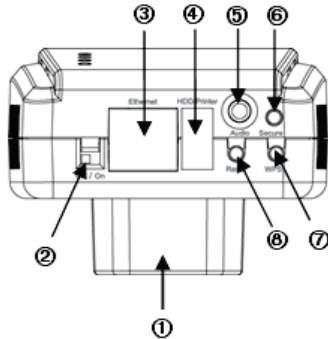
 : WiFi LED (Hercules ePlug WiFi)

Hercules ePlug 200 Mini PT



1.6. Connectivity overview

Hercules ePlug WiFi



① **Power plug** to plug the Hercules ePlug adapter into an electrical outlet

② **ON/OFF button**

③ **Ethernet port** allowing you to connect a device to the Hercules ePlug adapter (desktop computer, laptop or netbook computer, game console, TV decoder, modem/router, Internet "box")

④ **HDD/Printer USB port** for connecting a hard disk drive, a USB key or a USB printer

⑤ **Audio port** (mini-jack) for connecting multimedia speakers

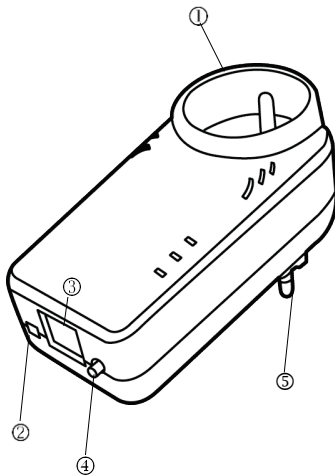
⑥ **Secure button** with three functions, allowing you to:

- **enable pairing**, in order to connect other ePlug 200 adapters to the network (by way of a short press, from 2 to 4 seconds): the power LED flashes
- **randomly generate a new network password** (by way of a medium press, from 8 to 12 seconds): the adapter restarts when you release the button
- **restore factory default settings** (by way of a long press, of more than 15 seconds): the adapter restarts

⑦ **WPS** (Wi-Fi Protected Setup™) button ensuring automatic connection to a WiFi network

⑧ **Reset button** for resetting WiFi and IP address parameters

Hercules ePlug 200 Mini PT



① Additional electrical outlet to plug in another electrical device

② ON/OFF button, allowing you to turn the adapter on or off

③ Ethernet port allowing you to connect a device to the Hercules ePlug 200 Mini PT adapter (desktop computer, laptop or netbook computer, game console, TV decoder, modem/router, Internet “box”)

④ Pairing button with three functions, allowing you to:

- enable pairing, in order to connect other ePlug 200 adapters to the network (by way of a short press, from 2 to 4 seconds): the power LED flashes
- randomly generate a new network password (by way of a medium press, from 8 to 12 seconds): the adapter restarts when you release the button
- restore factory default settings (by way of a long press, of more than 15 seconds): the adapter restarts

⑤ Power plug to plug the Hercules ePlug 200 Mini PT adapter into an electrical outlet

2. INSTALLING YOUR HERCULES ePLUG

The Hercules ePlug 200 adapter has been designed to be simple to use and install, while at the same time minimizing the amount of space that it takes up when plugged in, thanks to its compact design.

If you are new to the world of HomePlug technology, we invite you to follow the pieces of advice set out in chapters 2.1 and 2.2 in order to get started.

Otherwise, you can proceed directly to chapter 2.3. **You haven't yet created a HomePlug network: initial installation of Hercules ePlug WiFi Duo** which sets out, step by step, the installation procedure for your Hercules ePlug 200.

Finally, if you have already created a HomePlug network and wish to add a new adapter, please refer to chapter 2.4. **You have already created a HomePlug network: adding a new adapter to your network (Hercules ePlug WiFi Solo or Duo).**

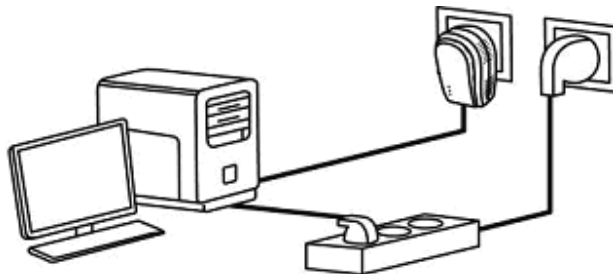
2.1. How to position your Hercules ePlug

To help you connect your Hercules ePlug, start by selecting an electrical outlet near to the equipment you wish to connect and follow the pieces of advice set out below.



To optimize the transfer of data on your electrical network, be sure to follow these recommendations:

- *You should preferably plug the adapters and devices (computer, Internet "box"...) into separate wall outlets: one for the adapter and one for the device to be connected to the HomePlug network.*
- *If you plug both an adapter and a device into the same powerstrip, the performance (bitrate) of your network may be affected.*



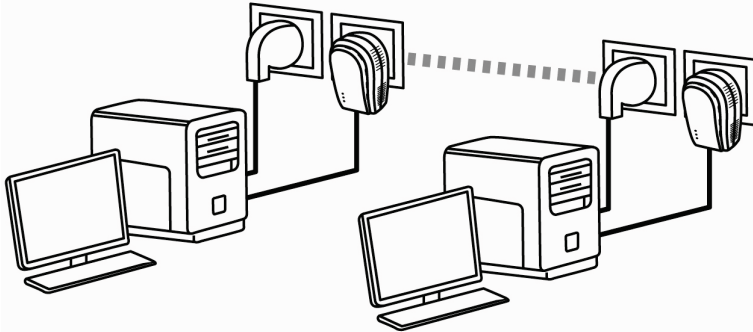
2.2. HomePlug: the partner to WiFi in your home

If you have a modem router or an Internet "box", your various pieces of network equipment, whether connected by WiFi or HomePlug, can communicate with one another. All data is transferred to a central point, in this case your modem router or Internet "box", and may circulate either on the electrical network via your HomePlug adapters, or by way of radio waves via WiFi.

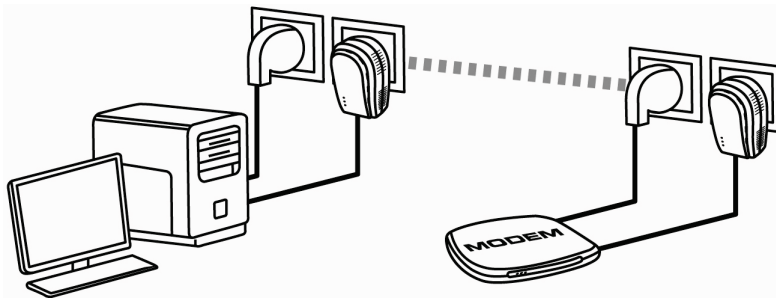
It is therefore perfectly possible for a computer or any other piece of network equipment connected via WiFi to communicate with another piece of equipment connected via the HomePlug network to the modem router.

In chapters 2.2.1 to 2.2.3, you will find different examples of purely HomePlug networks. However, there is nothing stopping you from adding WiFi devices as well: for example, an Internet "box" connected to the HomePlug network on the one hand, and a WiFi laptop computer connected to this same "box" via WiFi, on the other hand.

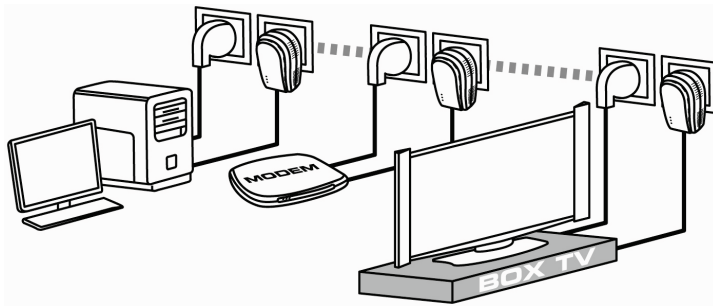
2.2.1. Connecting two computers in a HomePlug network



2.2.2. Connecting a computer to a modem, a modem router, an Internet "box" or a game console in a HomePlug network



2.2.3. Connecting an Internet "box" to a Digital Terrestrial Television decoder in a HomePlug network

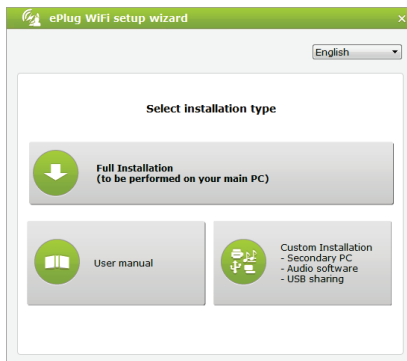


2.3. You haven't yet created a HomePlug network: initial installation of Hercules ePlug WiFi Duo



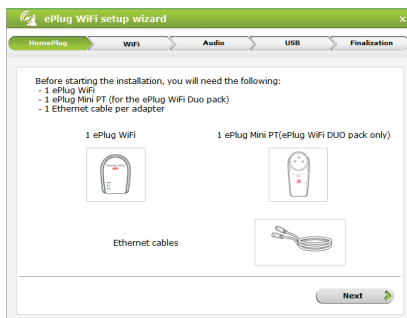
The HomePlug AV standard of Hercules ePlug 200 adapters is not compatible with the Homeplug 1.0 standard of Hercules ePlug 85 adapters and HomePlug 14 Mbits/s adapters, but these two standards can coexist side-by-side. In effect, if you have already installed a HomePlug network in the HomePlug 1.0 standard (for example, with Hercules ePlug 85 adapters), you cannot add Hercules ePlug 200 adapters to that network. However, you are perfectly able to install a second network in your home composed of Hercules ePlug 200 adapters and HomePlug AV compatible devices.

Installing a PLC network:



1. Launch the installation CD-ROM and select **Full Installation**.

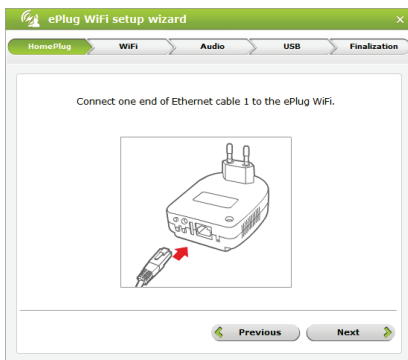
Step 1: Installing the PLC adapters



2. Make sure that you have the following items; they are required to create your PLC network: 1 ePlug WiFi adapter, 1 ePlug Mini PT adapter, 2 Ethernet cables. Click **Next**.



3. Select **This is my first PLC network**.



4. Connect the first Ethernet cable to the ePlug WiFi adapter. Click **Next**.



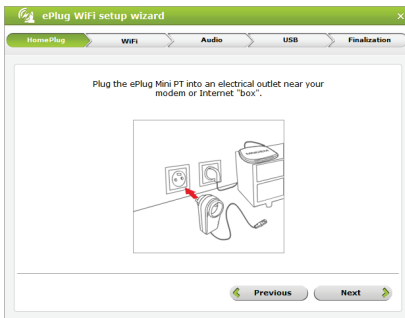
5. Connect the ePlug WiFi adapter to a power outlet located near your computer. Click **Next**.



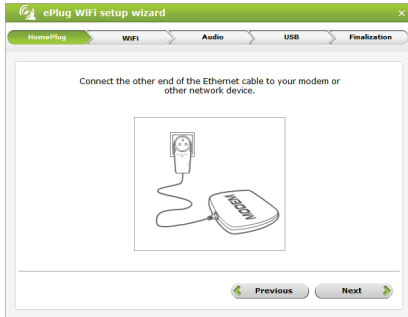
6. Connect the other end of the first Ethernet cable to your computer. Click **Next**.



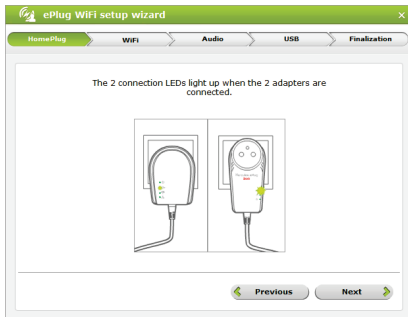
7. Connect the second Ethernet cable to the ePlug 200 Mini PT. Click **Next**.




8. Connect the ePlug 200 Mini PT adapter to a power outlet located near your modem or box. Click **Next**.

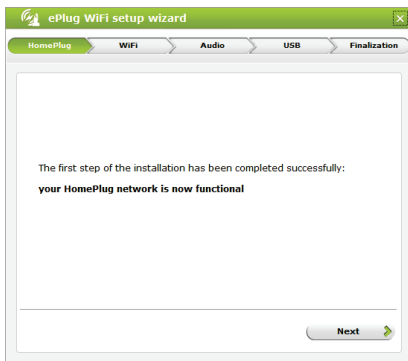


9. Connect the other end of the second Ethernet cable to your modem or another network device. Click **Next**.

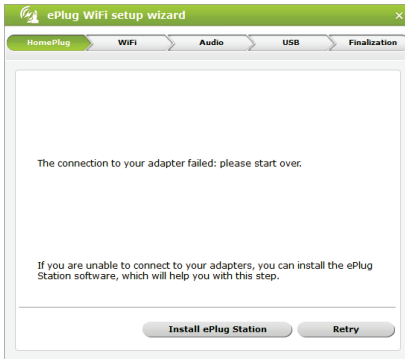


10. Check that the connection indicator lights up.  ct.

The setup wizard will now check whether the first step of the installation process was successful.



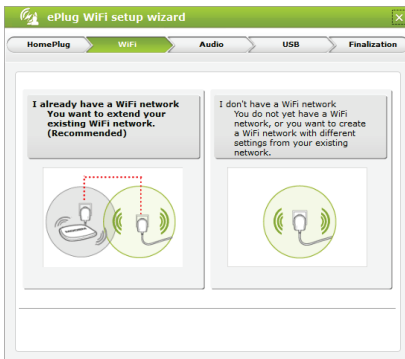
11. If the installation was successful, click **Next** to complete the first step of the installation.



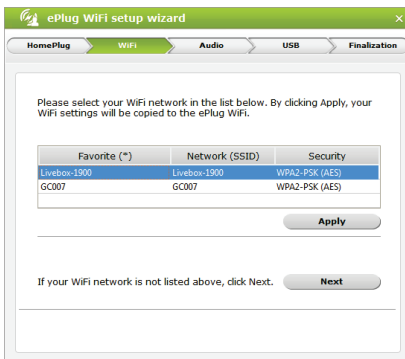
If the connection failed, you can restart the installation process, or install the ePlug Station software.

Step 2: Configuring the WiFi settings

1. You already have an existing WiFi network.



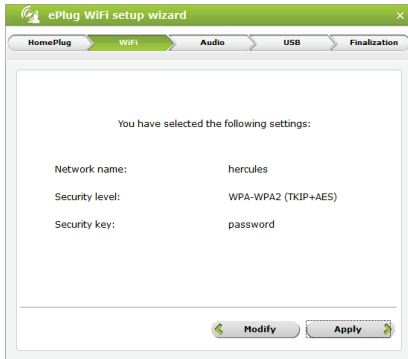
Select **I already have a PLC network**.



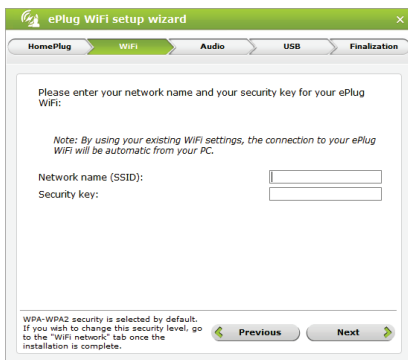
Case 1:

The setup wizard displays the list of the available WiFi networks. Select your network from the list of available networks. Click **Apply**.

If your network does not appear in the list, click **Next**. Please refer to Case 2 below.



The wizard summarizes the available information. Click **Apply**.



Case 2:

No list of available networks is displayed, or your network does not appear in the list.

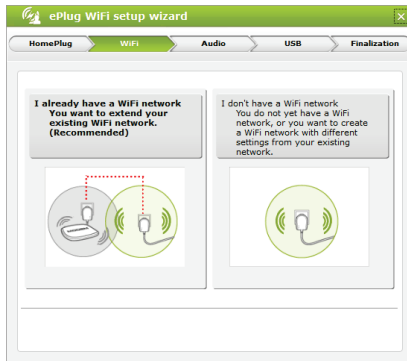
Enter your network's **Network name (SSID)** and **Security key**. This information is usually stated on a label affixed to your box or router.

Click **Next**.

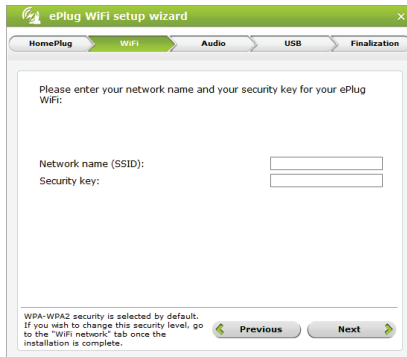


The wizard summarizes the available information. Click **Apply**.

2. You wish to create a WiFi network.

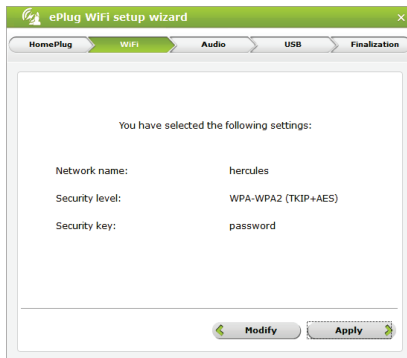


Select **I don't have a WiFi network**.



Enter your **WiFi network's name** (e.g. hercules) and provide the **security key**. The security key is a password containing at least 8 alphanumerical characters (an alphanumerical character can be a digit (0-9) or a letter (a-z or A-Z)).

Click **Next**.



Review the WiFi connection settings. Click **Apply**.

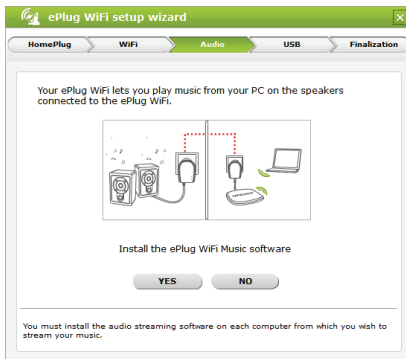
Step 3: Setting up the ePlug WiFi Music audio streaming wizard



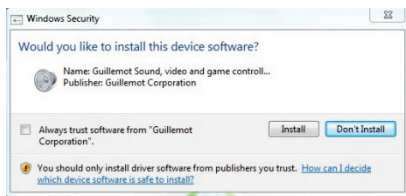
The ePlug WiFi Music audio streaming wizard enables you to stream music stored on your computer on multimedia speakers connected directly to the ePlug WiFi adapter.

If you own several computers, you can install the wizard on each computer by launching the installation CD-ROM on the chosen computer and selecting the Custom Installation option on the first screen.

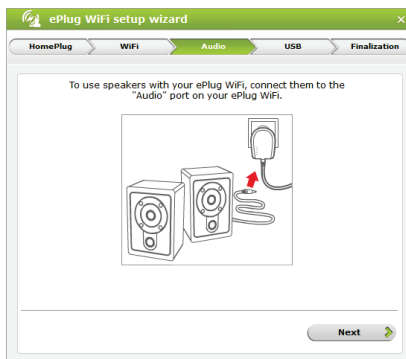
Please note that only one computer can stream music at a time.



1. Click **Yes** to install the audio streaming wizard.



2. In the Windows dialog that appears, click **Install**.



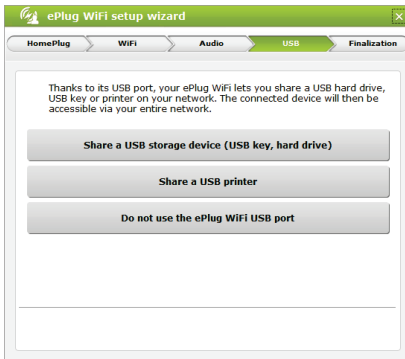
3. On the information screen that appears, follow the instructions, then click **Next**.



4. On the information screen that appears, follow the instructions, then click **Next**.

Step 4: Selecting the devices that you wish to share

You can now select the kind of device that you wish to share: hard drive, USB key or USB printer. You can also choose not to use the USB port for the time being.

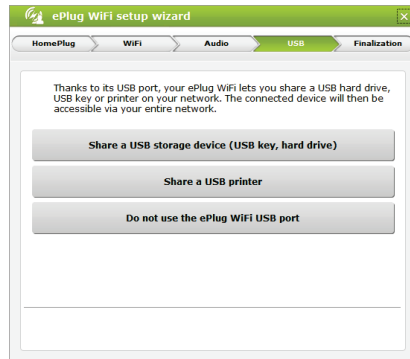


1. Select **Share a USB storage device** (USB key, hard drive) or **Share a USB printer**. Click **Next**.

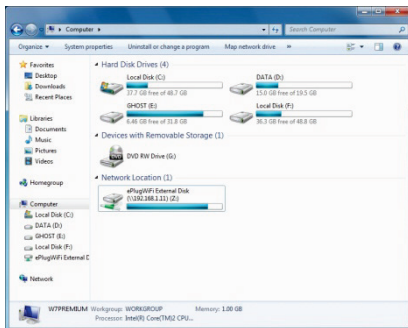


2. Connect a USB key, for instance. Click **Share** when the device search process has completed.

*You must run the wizard on each computer on which you wish to share a device. To do so, select **Custom Installation**, then **Share a USB storage device**.*



Windows Explorer opens and displays the contents of the storage device connected to the ePlug WiFi adapter. The ePlug WiFi adapter now appears in the Network Location pane.



3. Return to the ePlug WiFi adapter's setup wizard, then click **Next**.

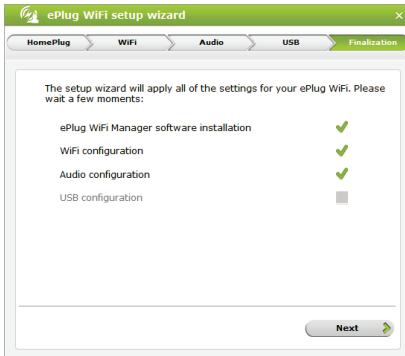


4. If required, connect your USB printer to the ePlug WiFi adapter's USB port. Click **Share** when the device search process has completed. Then, click **Next**.

If you do not wish to connect your USB printer now, click **Next**.

Step 5: Finalizing the installation

1. The wizard will now install the ePlug WiFi Manager software. Click **Next** and follow the instructions displayed.



2. The wizard summarizes the available information. Click **Next**.



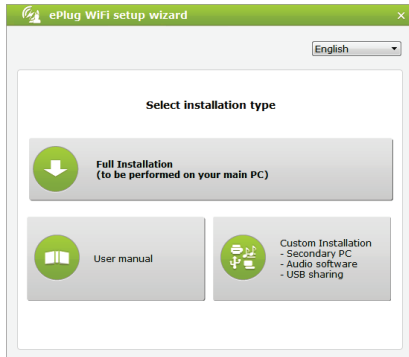
3. The installation is complete. Click **Finish** to close the wizard.

You can now move your ePlug WiFi and ePlug Mini PT adapters to any power outlet within your home, then connect the required devices to the relevant ePlug WiFi adapter.

2.4. You have already created a HomePlug network: adding a new adapter to your network (Hercules ePlug WiFi Solo or Duo)

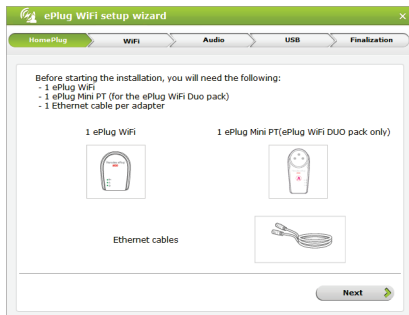
Let's take an example of a home in which you have already installed a HomePlug network composed of HomePlug adapters in the AV standard (Hercules ePlug 200 Mini PT, for example). You now wish to install one or more new Hercules ePlug adapters in order to expand your network and be able to connect new devices (printer, modem, router, game console...).

Completing an existing PLC network:

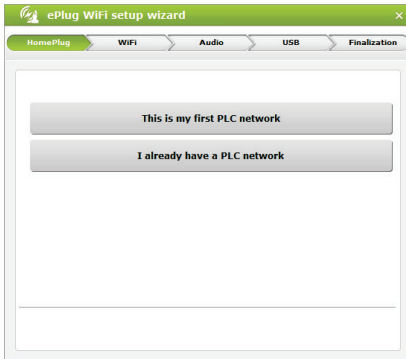


1. Launch the installation CD-ROM and select **Full Installation**.

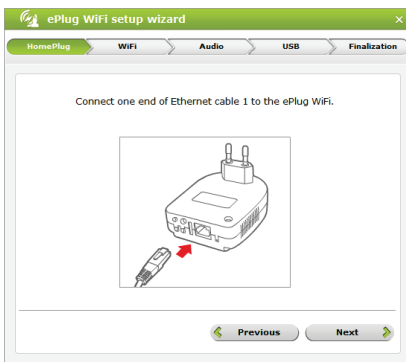
Step 1: Adding the ePlug WiFi adapter



2. Make sure that you have the following items; they are required to create your PLC network: 1 ePlug WiFi adapter, 1 ePlug Mini PT adapter, 2 Ethernet cables (Duo version) or 1 ePlug WiFi adapter, 1 Ethernet cable (Solo version). Click **Next**.



3. Select **I already have a PLC network**.



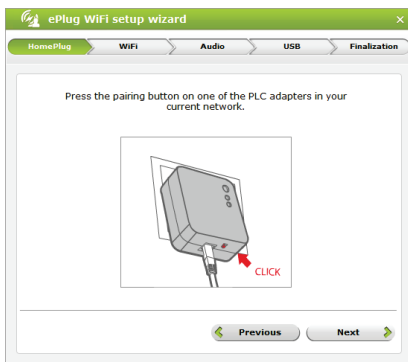
4. Connect the Ethernet cable to the ePlug WiFi adapter. Click **Next**.



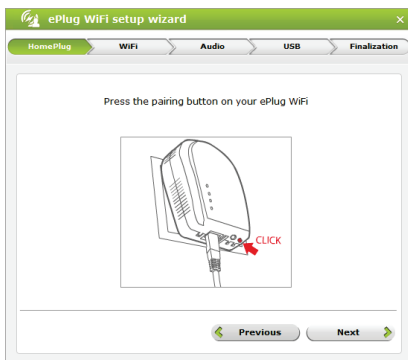
5. Connect the ePlug WiFi adapter to a power outlet located near your computer. Click **Next**.



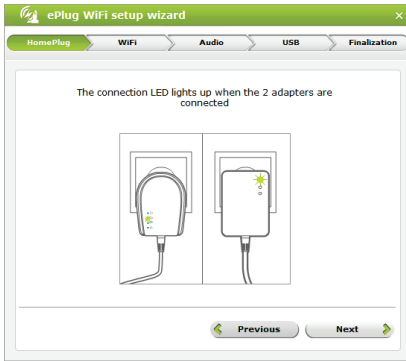
6. Connect the other end of the Ethernet cable to your computer. Click **Next**.




7. Press the pairing button on one of the PLC adapters connected to your existing network (for 3 seconds). Click **Next**.



8. Press the pairing button on your ePlug WiFi adapter for 2-4 seconds. Click **Next**.



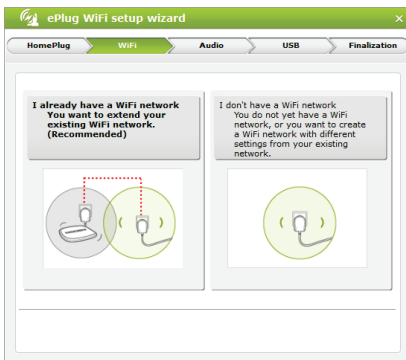
9. Check that the connection indicator  lights up. Click **Next**.



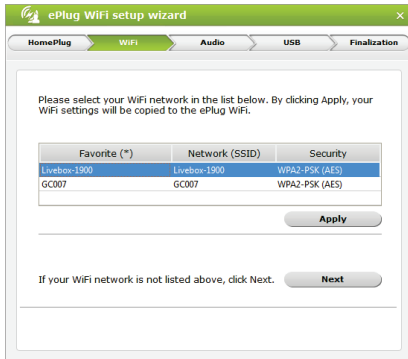
10. If you own an ePlug WiFi Duo pack, repeat the steps above to connect your ePlug Mini adapter. Click **Next** to complete the first step of the installation process.

Step 2: Configuring the WiFi settings

1. You already have an existing WiFi network.



Select **I already have a PLC network**.



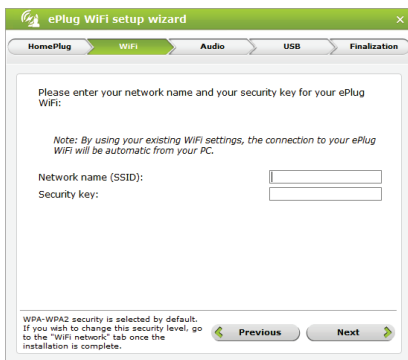
Case 1:

The setup wizard displays the list of the available WiFi networks. Select your network from the list of available networks. Click **Apply**.

If your network does not appear in the list, click **Next**. Please refer to Case 2 below.



The wizard summarizes the available information. Click **Apply**.

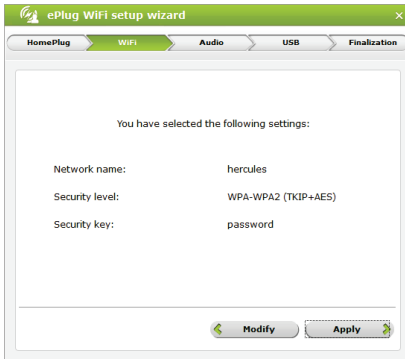


Case 2:

No list of available networks is displayed, or your network does not appear in the list.

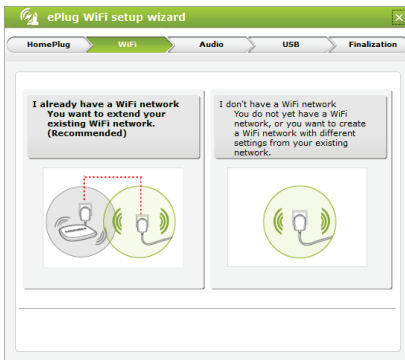
Enter your network's **Network name (SSID)** and **Security key**. This information is usually stated on a label affixed to your box or router.

Click **Next**.



The wizard summarizes the available information. Click **Apply**.

2. You wish to create a WiFi network.

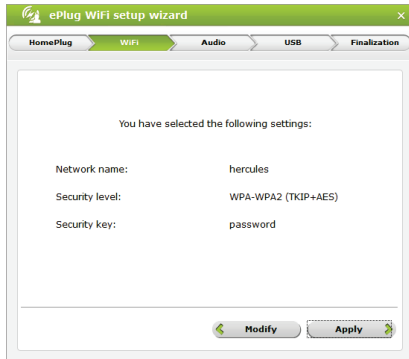


Select **I don't have a WiFi network**.



Enter your **WiFi network's name** (e.g. hercules) and provide the **security key**. The security key is a password containing at least 8 alphanumerical characters (an alphanumerical character can be a digit (0-9) or a letter (a-z or A-Z)).

Click **Next**.



Review the WiFi connection settings. Click **Apply**.

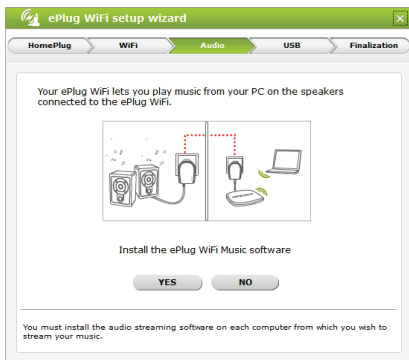
Step 3: Installing the audio streaming wizard



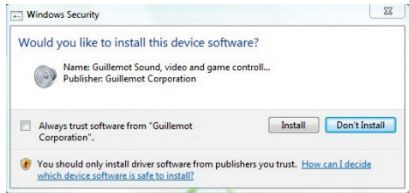
The ePlug WiFi Music audio streaming wizard enables you to stream music stored on your computer on multimedia speakers connected directly to the ePlug WiFi adapter.

If you own several computers, you can install the wizard on each computer by launching the installation CD-ROM on the chosen computer and selecting the **Custom Installation** option on the first screen.

Please note that only one computer can stream music at a time.



1. Click **Yes** to install the audio streaming wizard.



2. In the Windows dialog that appears, click **Install**.



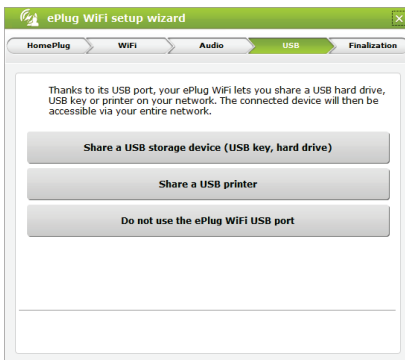
3. On the information screen that appears, click **Next**.



4. On the information screen that appears, click **Next**.

Step 4: Selecting the devices that you wish to share

You can now select the kind of device that you wish to share: hard drive, USB key or USB printer. You can also choose not to use the USB port for the time being.

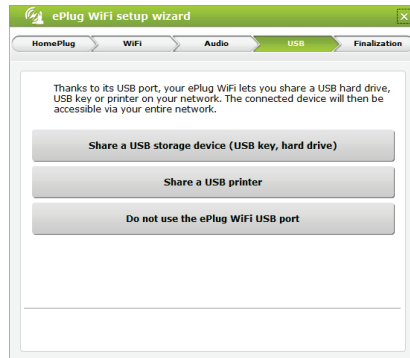


1. Select **Share a USB storage device** (USB key, hard drive) or **Share a USB printer**. Click **Next**.

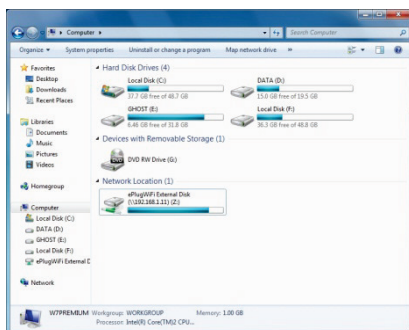


2. Connect a USB key, for instance. Click **Share** when the device search process has completed. Then, click **Next**.

*You must run the wizard on each computer on which you wish to share a device. To do so, select **Custom Installation**, then **Share a USB storage device**. Follow the instructions displayed onscreen.*



Windows Explorer opens and displays the contents of the storage device connected to the ePlug WiFi. The ePlug WiFi adapter now appears in the Network Location pane.



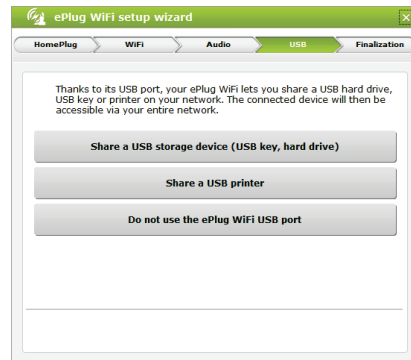
3. Return to the ePlug WiFi adapter's setup wizard, then click **Next**.



4. If required, connect your USB printer to the ePlug WiFi adapter's USB port. Click **Share** when the device search process has completed. Then, click **Next**.

If you do not wish to connect your USB printer now, click **Next**.

*Run the wizard on every computer on which you wish to access this printer. To do so, select **Custom Installation**, then **Share a USB printer**. Follow the instructions displayed onscreen.*

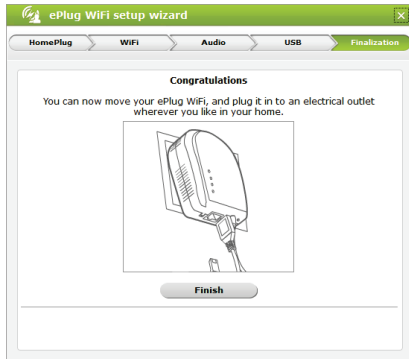


Step 5: Finalizing the installation

The wizard will now install the ePlug WiFi Manager software. Follow the instructions displayed on screen.



The wizard summarizes the available information. Click **Next**.



The installation is complete. Click **Finish** to close the wizard.

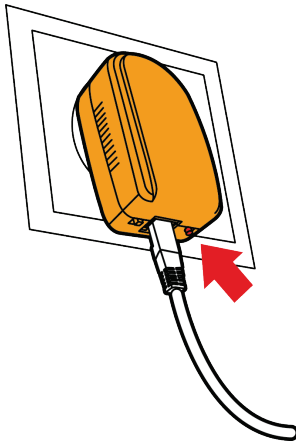
You can now move your ePlug WiFi and ePlug Mini PT adapters to any power outlet within your home, then connect the required devices to the relevant ePlug WiFi adapter.

2.5. How to change the network password

When you install a HomePlug network, a random password is automatically generated. You can easily generate a new random password by using the Connect button's restart function.



If you change the network password on an adapter, that adapter will no longer be part of the network.



- Press for between 8 to 12 seconds on the Connect button on the adapter whose password you want to change.

Wait until the adapter restarts.

- Connect the other adapters by pressing for between 2 to 4 seconds on the Connect button on the adapter which is already part of the network you wish to create, and then pressing the Connect button on the adapter you wish to integrate into that network.

- Repeat this procedure for all adapters you wish to integrate into the network.

You can also change your network's password in the ePlug WiFi Manager software.

3. STREAMING MUSIC WITH ePLUG WIFI MUSIC

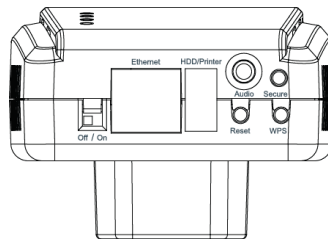
The ePlug WiFi Music software is a very simple application that enables you to stream music on speakers connected to your ePlug WiFi adapter's Audio port.



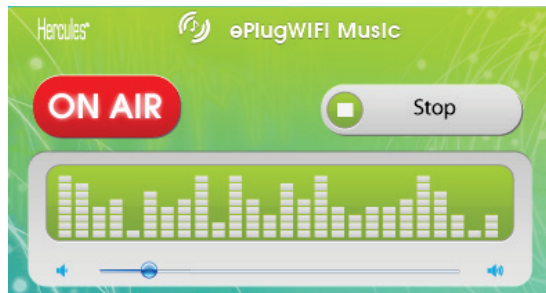
You must install the ePlug WiFi Music software on each computer from which you wish to stream music.

ePlug WiFi Music is compatible with all audio playback software.

1. Connect speakers to your ePlug WiFi adapter's **Audio** port (mini-jack).



2. Open the ePlug WiFi Music application by clicking the  icon located in the Windows task bar.



3. Click the **Stream** button.
4. Open a multimedia content player (iTunes, Windows Media Player, VLC, etc.) or any music playback player (e.g. a web radio, etc.).
5. Start playing a track from your music library, a web radio, etc.



*If the music doesn't play on the speakers connected to the ePlug WiFi adapter, make sure that the **Hercules ePlug WiFi Audio speakers** device is the default audio device:*

*Select the **Sound** option in the Windows taskbar.*

*On the **Playback** tab, select **Hercules ePlug WiFi Audio speakers**.*

*Click the **Set default** button if this device isn't selected by default.*

4. MANAGING YOUR PLC NETWORK WITH HERCULES ePLUG STATION

The Hercules ePlug Station software has been designed to let you manage your PLC network. Once you have provided the requested items of information, you will be able to view a depiction of all devices connected to your PLC network, allowing you to verify their functioning and bitrate, room by room.

4.1. Downloading Hercules ePlug Station

Hercules ePlug Station is available for download from the <http://www.hercules.com> website, in the **Downloads** part of the PLC products section.

On the Hercules website, select the version corresponding to your product, follow the procedure and save the installer file to your hard disk drive.

4.2. Installing Hercules ePlug Station

- Double-click the **ePlugStation_Setup.exe** file (in the location where you have saved it on your computer) to launch the installation.



To use Hercules ePlug Station, your computer must meet the following minimum system requirements:

- Intel Pentium III, AMD Athlon/AMD-K6
- 64MB RAM
- 10/100 RJ-45 Ethernet network card
- CD-ROM drive
- 50MB free hard disk space
- Operating system: Microsoft Windows 2000, XP, Vista, 7

-
- If a Windows security warning is displayed, click **Run**.
 - Select the location for extraction of the files, then click **Next**.



Once extraction is complete, a Hercules ePlug Station window opens.

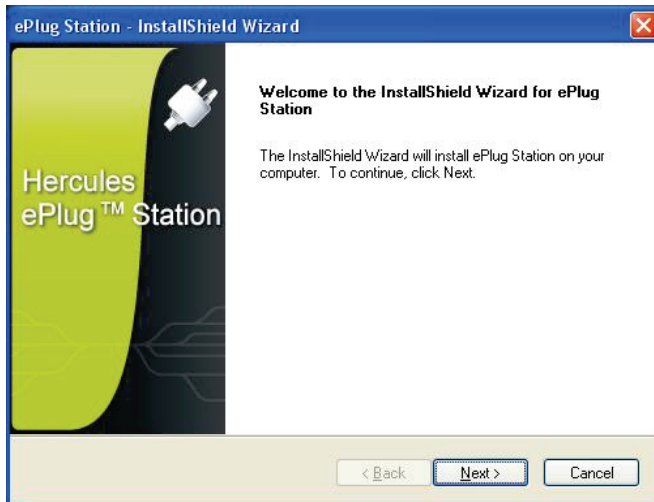


- Click the **Install Hercules ePlug Station** button.

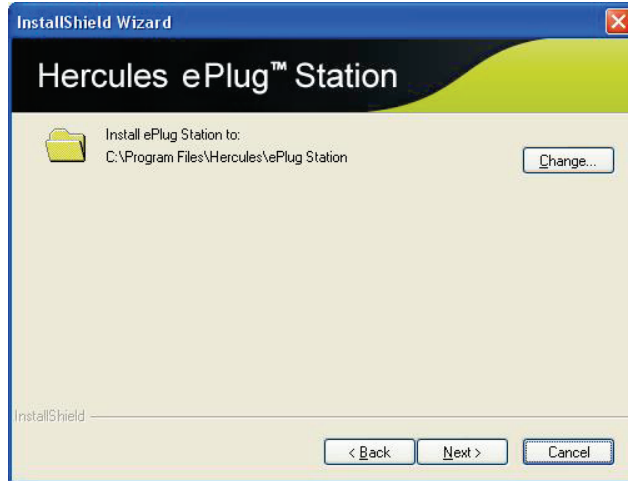


The welcome screen for the ePlug Station InstallShield Wizard is displayed.

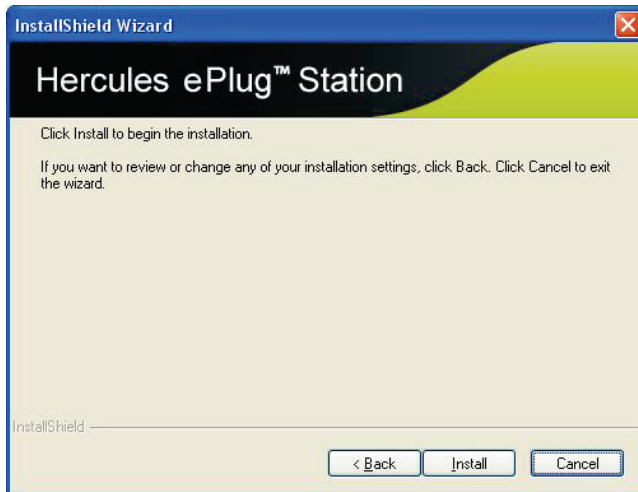
- Click **Next**.



- Select **I accept the terms of the License Agreement**, then click **Next**.



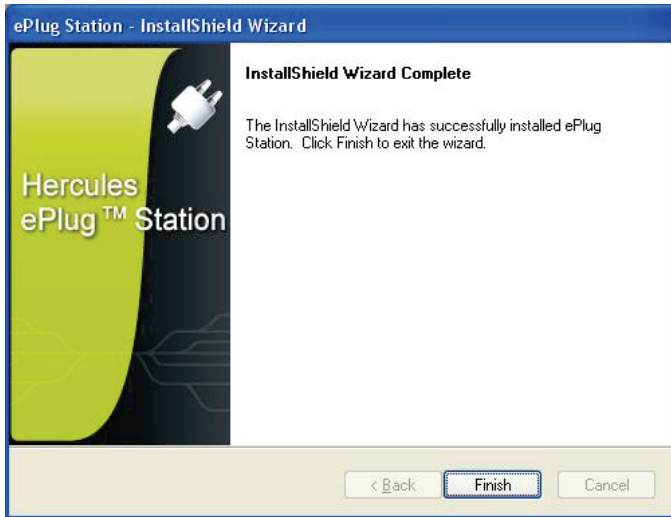
- Select the installation location for **ePlug Station**, then click **Next**.



- Click **Install** to confirm your choice and launch the installation.



ePlug Station is installed in the selected location.

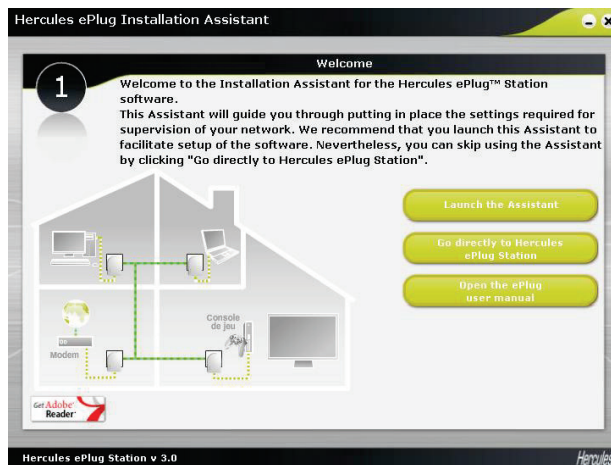


- Click **Finish** to exit the Wizard.

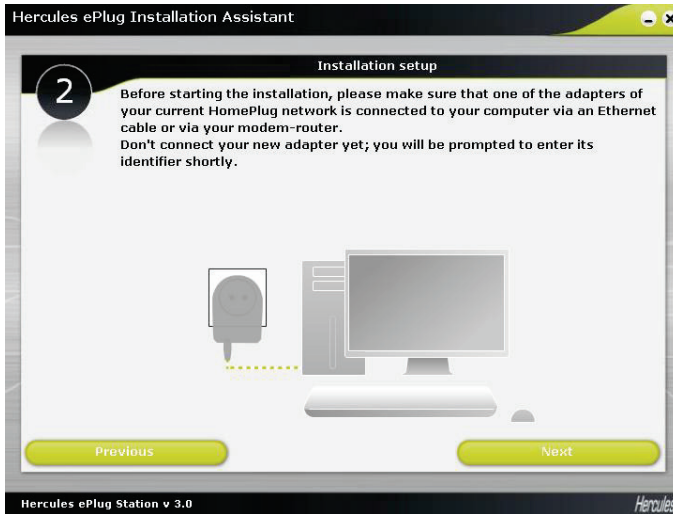


A shortcut icon to ePlug Station is now available on your desktop, and step 1 of the Hercules ePlug Installation Assistant is launched.

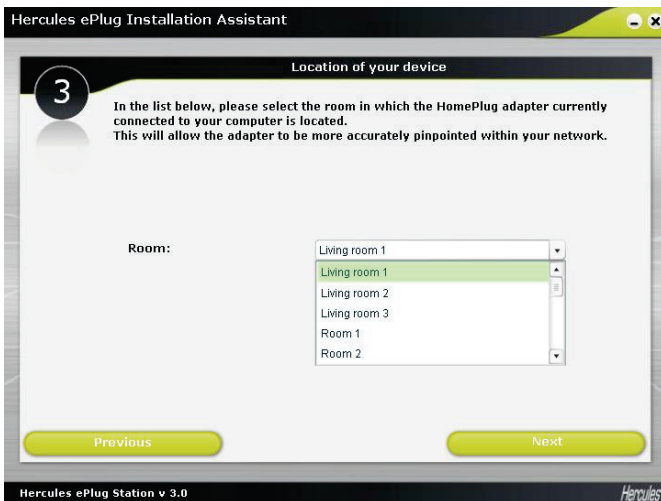
The objective is now to help ePlug Station to identify the adapters in your network (via each adapter's individual MAC address) and assign them a location in your home.



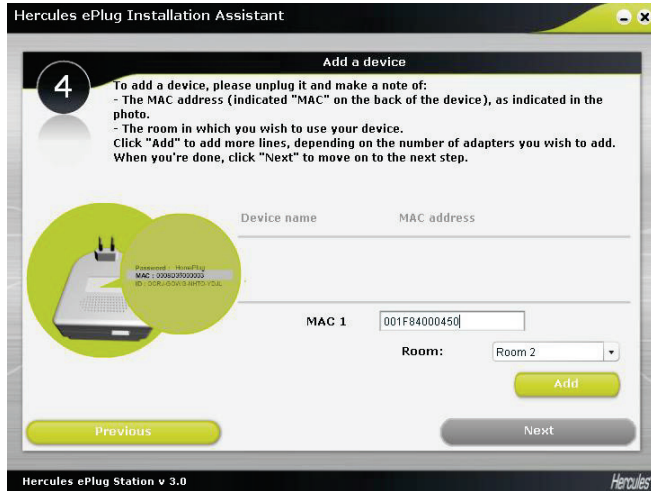
- Given that you have not yet configured the settings for managing your network, click **Launch the Assistant**. Afterwards, you will be able to directly access Hercules ePlug Station.



- In step 2, verify that the PLC adapter is connected to your computer or your modem/router.
- Click **Next**.



- In step 3, select (in the drop-down list) the room in which the PLC adapter connected to your computer is set up.
- Click **Next**.



- In step 4, enter the MAC address of the second PLC adapter in your network, and select the room in which it is set up.



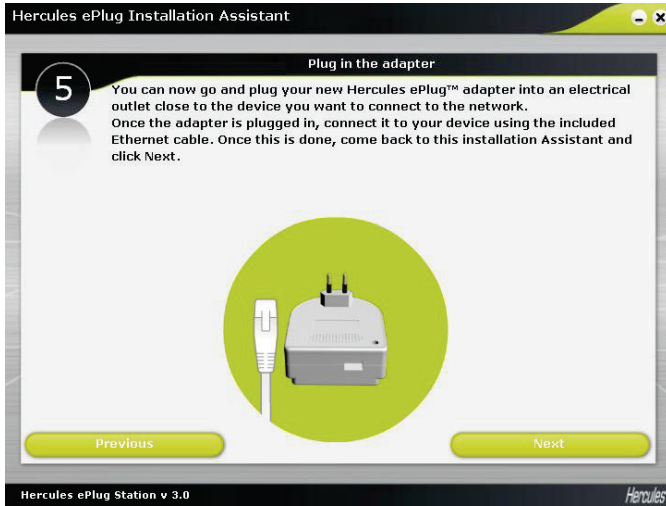
You may have to unplug the adapter to make a note of its MAC address. When you have plugged the adapter back in, the adapter will still be part of the network; you won't have to pair it again.

- Click **Add** and repeat this procedure for all other adapters that you own.

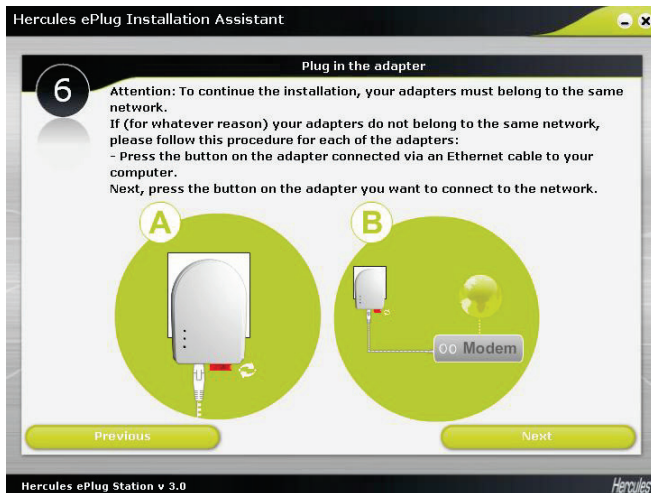



A table summarizes all of the devices that are set up, along with their location and their MAC address.

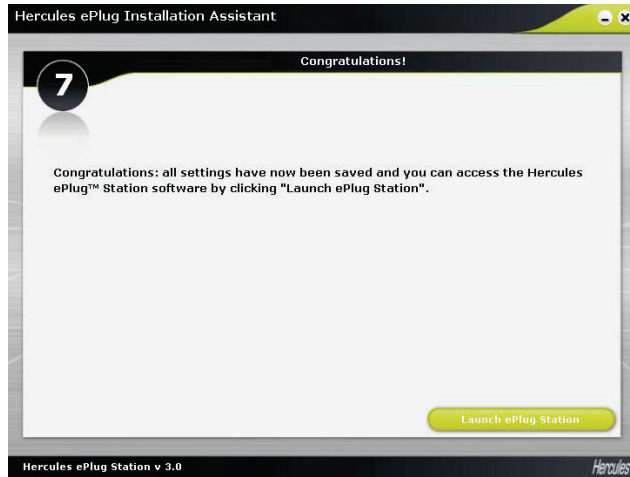
- Click **Next**.



- In step 5, plug in and connect your new adapter according to the instructions displayed onscreen.
- Click **Next**.



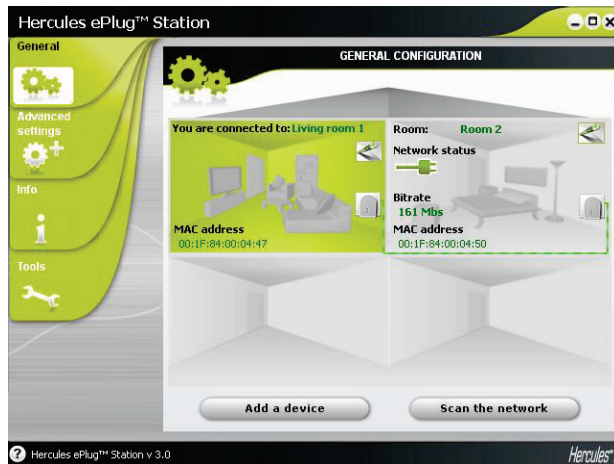
- In step 6, verify that your adapters are connected to the same network (the  LED should light up). If this is not the case, follow the instructions displayed onscreen.
- Click **Next**.



- In step 7, click **Launch ePlug Station**.

4.3. Managing your PLC network

The **General** tab displays the general configuration of your PLC network, with information regarding the room in which the adapter is located, the adapter's MAC address, the network status and bitrate.



The **You are connected to** information corresponds to the adapter to which the computer running ePlug Station is connected.

The **network status** indicator varies according to the network quality: green (very good connection quality), orange (medium connection quality), red (poor connection quality).

4.4. Adding one or more adapters to your Hercules ePlug Station monitoring list

You may wish to add a third and fourth adapter to extend your PLC network to other rooms in your home. In order for them to appear in Hercules ePlug Station, you must enter their information (room, MAC address).

- In the **General** tab, click **Add a device**.

- Unplug the PLC adapter that you wish to add to the monitoring list, and make a note of its MAC address. Next, enter the MAC address in the corresponding field and select (in the drop-down list) the room in which the PLC adapter in question is set up.

- Click **Add** and repeat this procedure for all of the other adapters that you wish to add.

- Click  when you're done.

- Plug the adapter into an electrical outlet in the room you have indicated.

- Click .

- Connect the adapter according to the instructions displayed onscreen.

- Click .

- Click **Close**.



The new adapter appears in the general configuration display for your PLC network.

4.5. Scanning the network

An automatic scan of the network is carried out each time you launch Hercules ePlug Station, or when you access the **General** tab. You can carry out a manual scan from the **General** tab by clicking the **Scan the network** button.




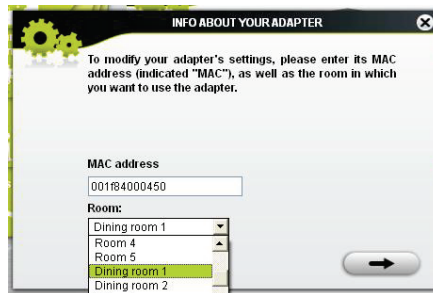
To disable automatic scanning of the network, go to the **Info** tab and deselect the **Automatically scan the network** box.

From then on, only a manual scan will allow you to refresh the general configuration of your PLC network.

4.6. Changing an adapter's location

If you have unplugged an adapter to plug it in in another room in your home, you can change the location information in ePlug Station to update the general configuration of your network.

- In the **General** tab, click the  icon in the upper right corner of the depiction of the room.



- Verify that the MAC address is correct, then select the new room from the drop-down list.

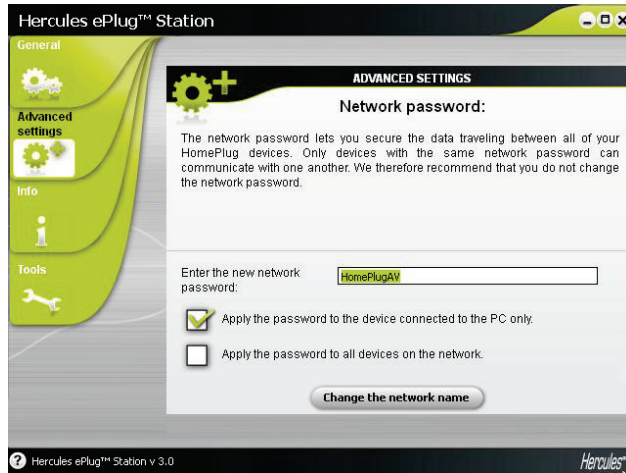
- Click .

4.7. Changing the password for your PLC network

In order to communicate with each other, the adapters in your PLC network must all have the same password.



If you modify the password for an adapter or adapters in your ePlug Station network, make sure to apply the new password to all of your adapters, by connecting them (one by one) to your PC and following the steps set out below.




On the adapter already connected to the PC:

- In the **Advanced settings** tab, enter the new network password in the corresponding field.
- Tick the **Apply the password to the device connected to the PC only**.



*If you tick the **Apply the password to the device connected to the PC only** box, the adapter connected to the PC will no longer be part of its previous network.*

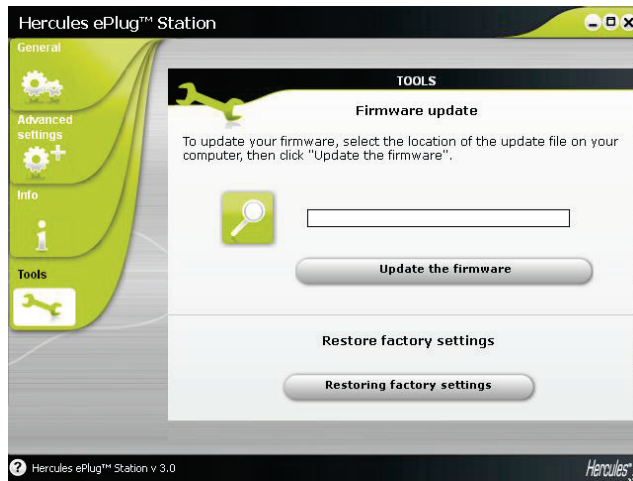
- Click **Change the network name**.
- In the warning window, click  .
- Make a note of the network name, then click **Close**.


On the other adapters:

- Successively connect to your PC each adapter to which you wish to apply the same password.
- Apply the procedure described above to each adapter.
- Plug each adapter back into its original electrical outlet.

4.8. Updating the firmware

To benefit from the latest firmware version, you can visit the Hercules website (<http://ts.hercules.com>) and verify whether new firmware is available for your ePlug adapters. Follow the instructions and save the file to your hard disk drive.



- In the **Tools** tab, click the  button and select the location of the firmware update file on your computer.

- Click **Update the firmware**.

4.9. Restoring the factory default settings of the ePlug adapter connected to the PC

If you encounter a connection problem, you can restore the factory default settings via ePlug Station.



This procedure will restore the factory default settings of the adapter connected to the PC only. If you have previously modified the network password, this adapter will no longer be part of the network.



Restoring the factory default settings via ePlug Station is the equivalent of resetting your adapter by pressing the adapter's connect button (a long press, for 15 seconds or more).

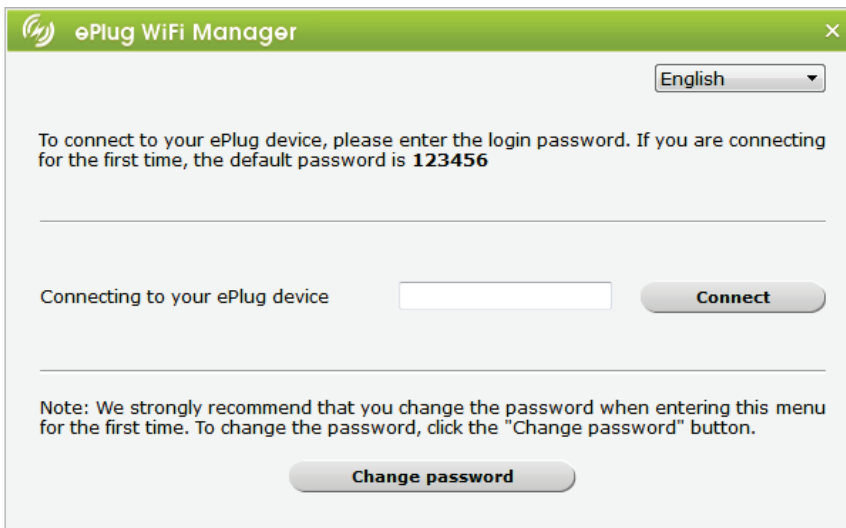
5. MANAGING YOUR WIFI NETWORK WITH ePLUG WIFI MANAGER

The WiFi feature built into your ePlug WiFi adapter enables you to stream music stored on a remote computer connected to your network on the speakers connected to the adapter, or to access the contents of a shared USB key or hard disk drive.

5.1. Open ePlug WiFi Manager

The installation wizard launched from the CD-ROM places an ePlug WiFi Manager icon on your Desktop. This icon enables you to access your ePlug WiFi adapter's settings management window.

Double-click the ePlug WiFi Manager icon located on your Desktop. The connection window appears.



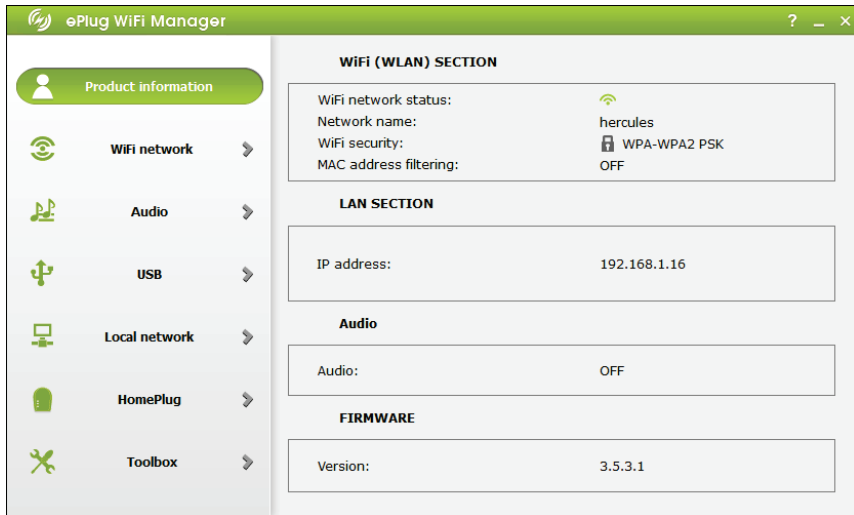
The screenshot shows the ePlug WiFi Manager application window. The title bar is green and contains the ePlug logo and the text "ePlug WiFi Manager" with a close button (X) on the right. Below the title bar is a language dropdown menu set to "English". The main content area has a light gray background and contains the following text: "To connect to your ePlug device, please enter the login password. If you are connecting for the first time, the default password is **123456**". Below this text is a horizontal line. Underneath the line, the text "Connecting to your ePlug device" is followed by a white password input field and a "Connect" button. Another horizontal line is below the input field. At the bottom of the window, there is a "Change password" button. A note at the bottom of the window reads: "Note: We strongly recommend that you change the password when entering this menu for the first time. To change the password, click the 'Change password' button."

Enter the password to connect to your ePlug adapter (the default password is 123456).



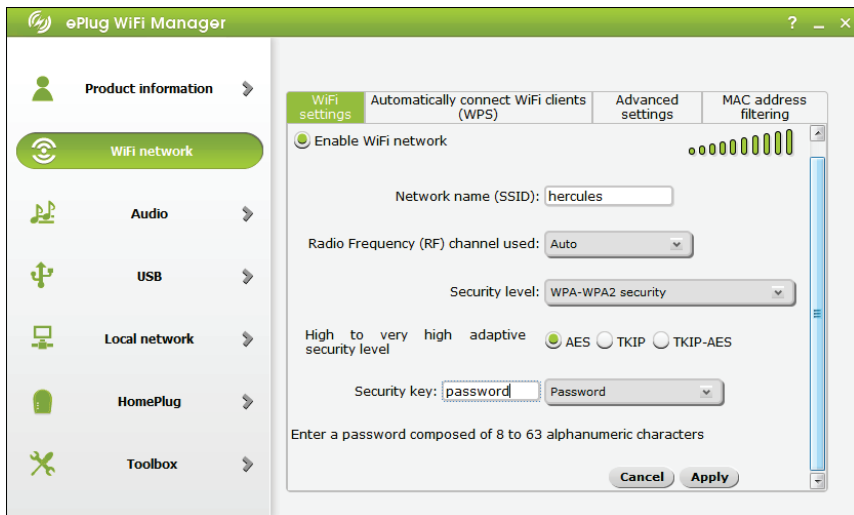
*For security reasons, please define your own password by clicking the **Change password** button. Remember to write it down and keep it in a safe place!*

5.2. Viewing your ePlug WiFi adapter's WiFi settings



The **Product information** screen summarizes all the information about your ePlug WiFi adapter.

5.3. Customizing your WiFi network



The **WiFi network** tab enables you to customize various settings.

If you wish, you can change **your network's SSID name** (by default, Hercules).



The SSID (Service Set Identifier) is the unique name shared by the WiFi adapters and access point on a wireless network. **Please make sure you do not to lose this name**, as it is required to connect your WiFi devices.

If required, you can change the **radio channel** used by the local WiFi network to communicate (from 1 to 13).



You should change this setting **only if another transmitting device is using the same channel**, which could affect your access point's WiFi performance.

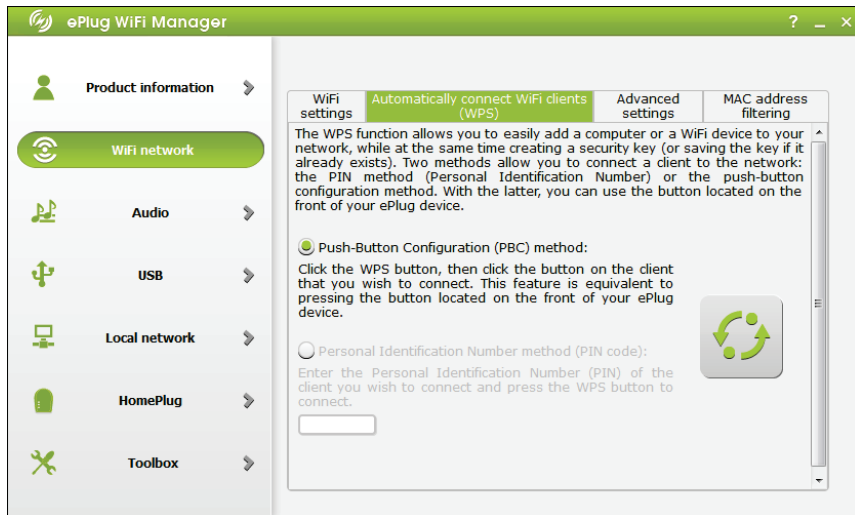
Remember to protect your network with a **security key**; otherwise, any user – whether malicious or not – will be able to connect to it.

The table below will help you choose among the **security levels** available in ePlug WiFi Manager.

Type	Security level	Key used	Authentication
LOW (WEP 64)	The lowest security level, in which simple encryption is performed on the transferred data. Every wireless client on the network must use the same key to decode the transmission.	64 bit key in 10 character hexadecimal format or 5 ASCII character alphanumerical format (e.g. "hello").	Open (no authentication required), Shared (shared key authentication method) or Auto (authentication required by device)
MEDIUM (WEP 128)	Security level identical to WEP 64; only the key length is different.	128 bit key in 26 character hexadecimal format or 13 ASCII character alphanumerical format.	Open (no authentication required), Shared (shared key authentication method) or Auto (authentication required by device)
HIGH (WPA-PSK)	New-generation high security level, specially designed for environments such as small offices or home offices, using a pre-shared key.	Password containing at least 8 alphanumerical characters .	TKIP or AES
VERY HIGH (WPA2-PSK)	New-generation very high security level, specially designed for environments such as small offices or home offices, using a pre-shared key.	Password containing at least 8 alphanumerical characters .	TKIP or AES
WPA or WPA2	Security level defined by the access point, according to the maximum security level supported by devices connected to the network.	Password containing at least 8 alphanumerical characters .	TKIP or AES



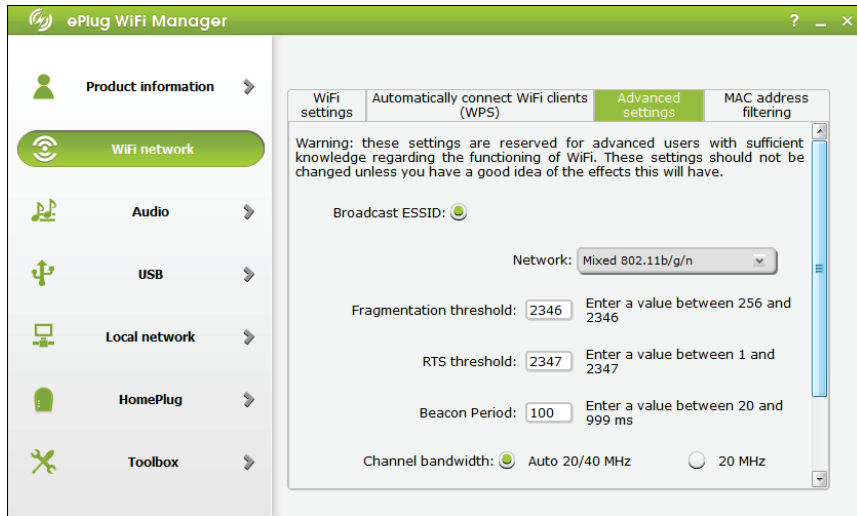
A hexadecimal key contains a selection of digits from 0 to 9 and letters from A to F (e.g. A123BCD45E for a 64-bit key). An **alphanumeric character** can either be a figure (0-9) or a letter (a-z or A-Z).



Click the **Automatically connect WiFi clients** to access the WPS connection.



WPS is a technology that enables a WPS compatible device and a Hercules ePlug WiFi adapter to easily connect to a wireless network. Several connection methods are available: simply press the button located on the device itself or select the relevant option in the ePlug WiFi Manager software, or enter the PIN code of the device that you wish to connect in the ePlug WiFi Manager interface.



Click the **Advanced settings** tab to access the WiFi network's advanced features.

If you don't want to broadcast your network's name, uncheck the **Broadcast ESSID** option.



If the ESSID is hidden, your network's name will not be displayed when you run a network search from a WiFi client. Please make sure you do not lose this name, as you will be asked to provide it to connect your WiFi devices.

The **Fragmentation threshold** setting defines the size at which data packets will be fragmented. If a packet's size is lower than the predefined size, the packet will not be fragmented. On the other hand, if the packet's size is greater than the chosen value, the packet will be fragmented before transmission, then rebuilt at the access point.



Fragmentation helps ensure more successful transmissions.

When an **RTS threshold** is defined, the wireless device requests the authorization to send data, which avoids too much data arriving simultaneously and causing a collision.



Modifying the RTS threshold level can alter your access point's performance.

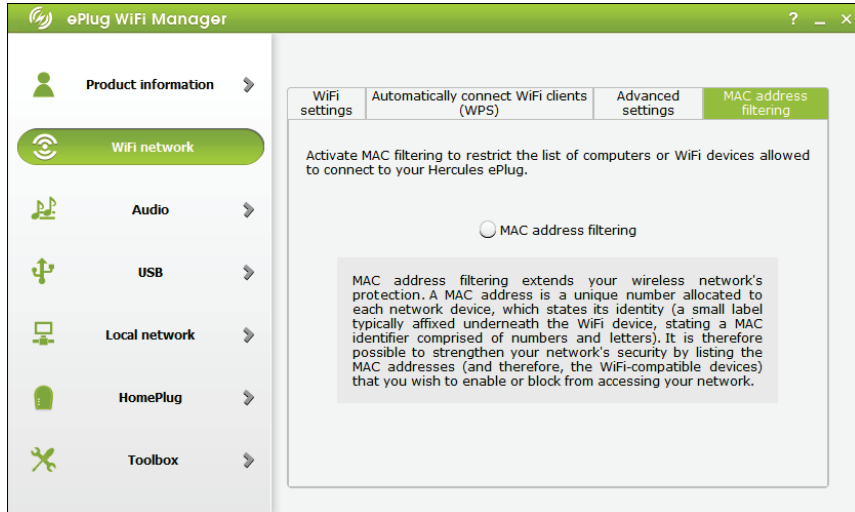
The **Beacon Period** interval allows you to change the wireless networks' detection period.

Select the relevant **Channel bandwidth** setting.



Select a **20 MHz** bandwidth (on one channel) to reduce interference, or let ePlug WiFi Manager automatically select the required bandwidth (**Auto/20/40 MHz**); please be aware that a greater bandwidth (i.e. **40 MHz** on two channels) allows for optimum data transmission.

The **Preamble** defines the size of the WiFi packets. A **Short preamble** optimizes bandwidth, but hinders WiFi coverage. On the other hand, if you deactivate this option, WiFi coverage will be extended, but latency will increase.



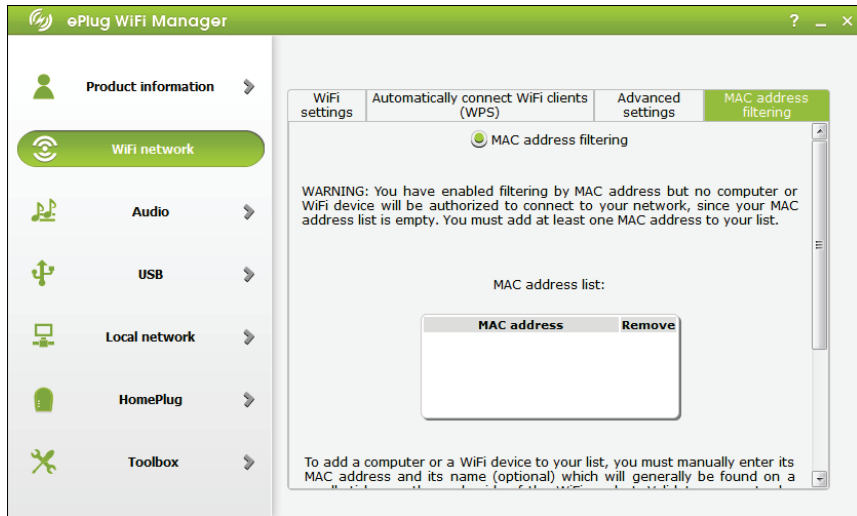
Click the **MAC address filtering** to select the computers and wireless devices that are allowed to connect to your ePlug WiFi adapter.

MAC address filtering complements security features; it restricts access to your ePlug WiFi adapter to certain computers and wireless devices only.



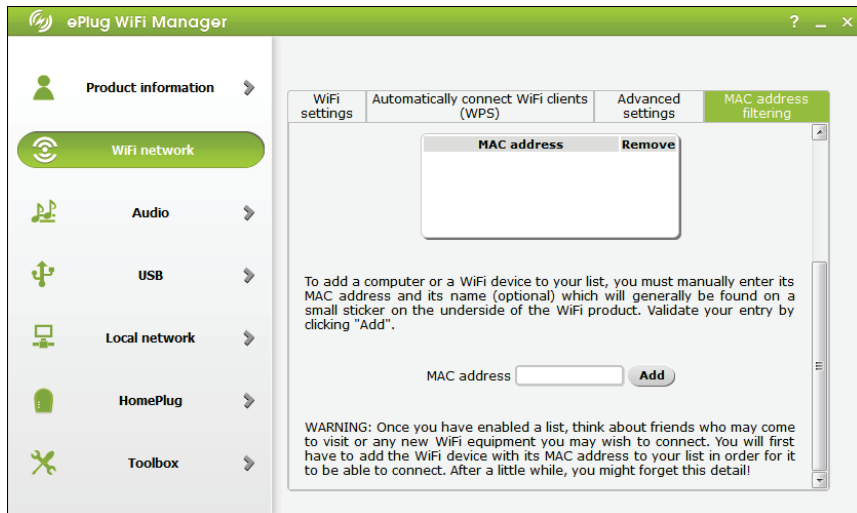
A **MAC address** is a unique address, created by the device's vendor; it is used to identify this device on a network. It is usually stated on the label affixed to the device.

Activate the **MAC address filtering** option.

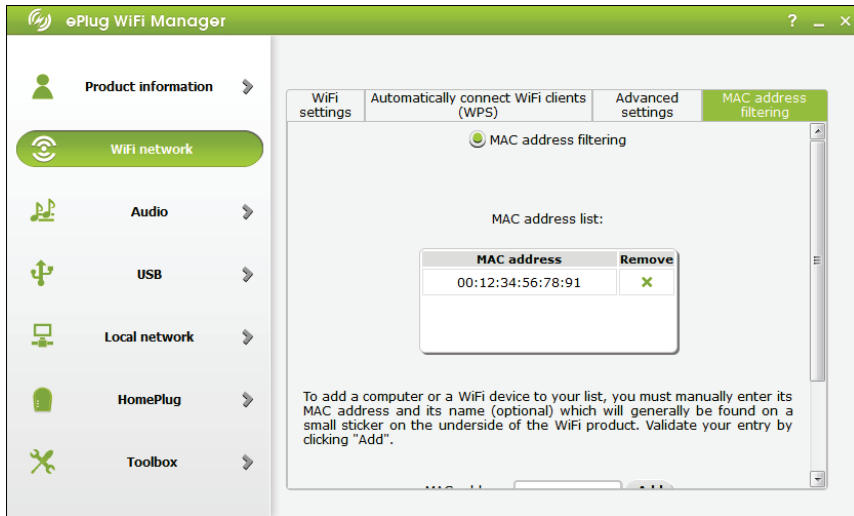


To add a computer, enter its MAC address (in the AAAAAAAAAAAA format, without separators).

Click the **Add** button.

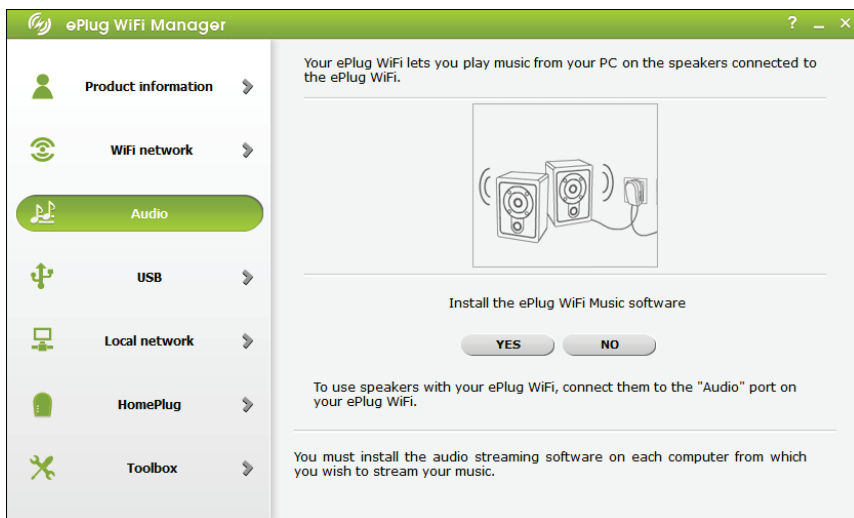


This address now appears in the list of computers and WiFi devices that are allowed to connect to the adapter.

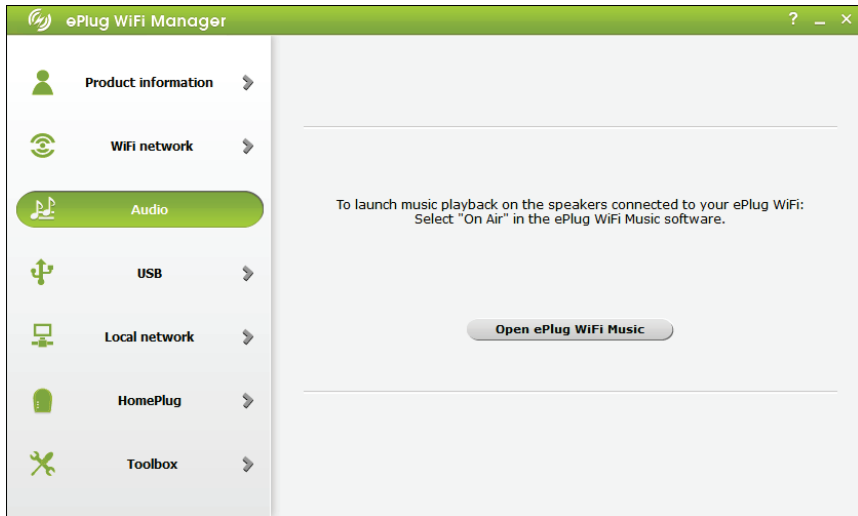


Each computer that you wish to connect to the adapter must be added here.

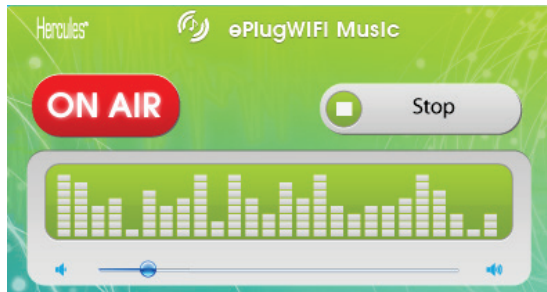
5.4. Installing the music streaming software



If you chose not to install ePlug WiFi Music with the setup wizard, you can install it now by clicking the **YES** button.

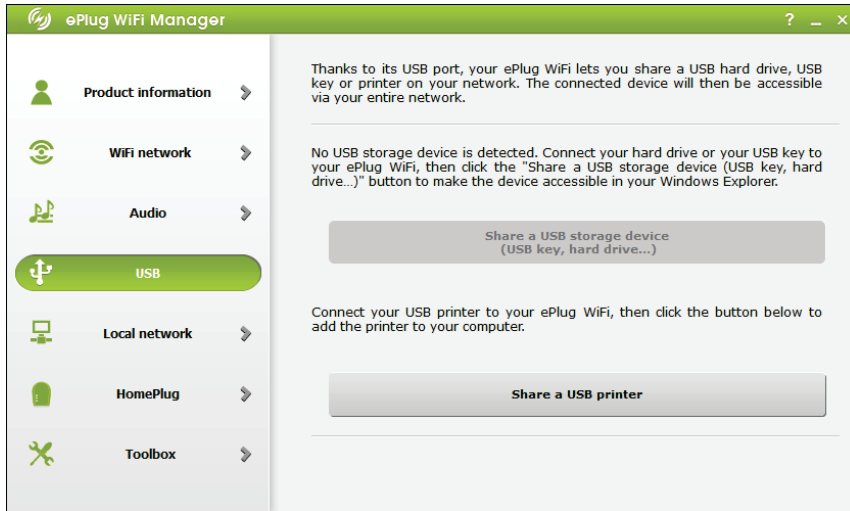


After installing the ePlug WiFi Music software, click the **Open ePlug WiFi Music** button.

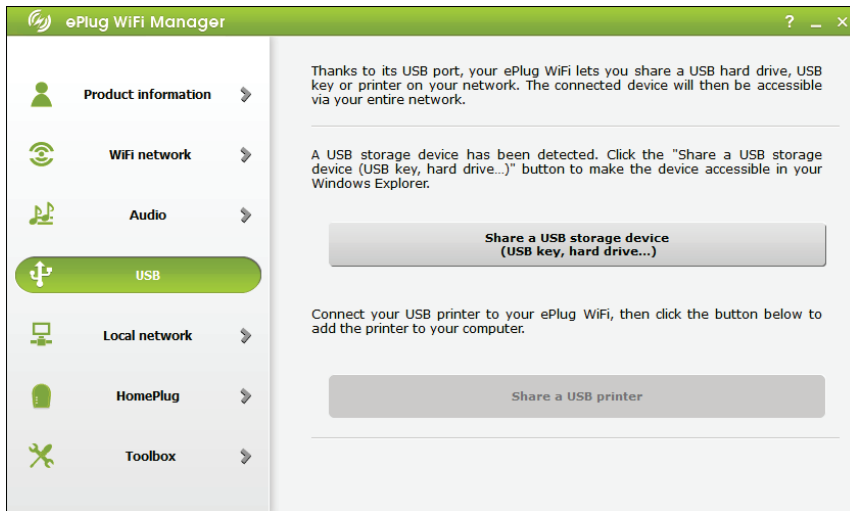


Click the **Stream** button to broadcast the music streamed by the computer on the speakers connected to the ePlug WiFi adapter. For more information, please refer to section 3. **STREAMING MUSIC WITH ePLUG WiFi Music**.

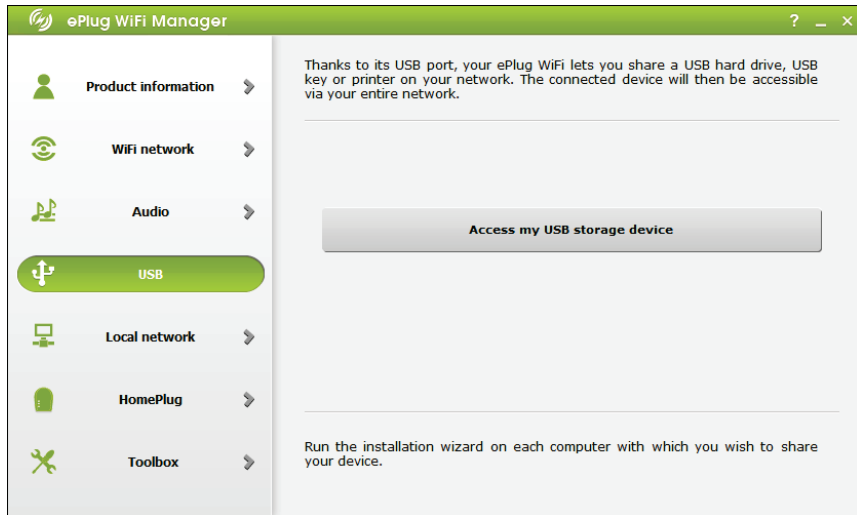
5.5. Activating a shared USB device (USB key, hard disk drive, printer)



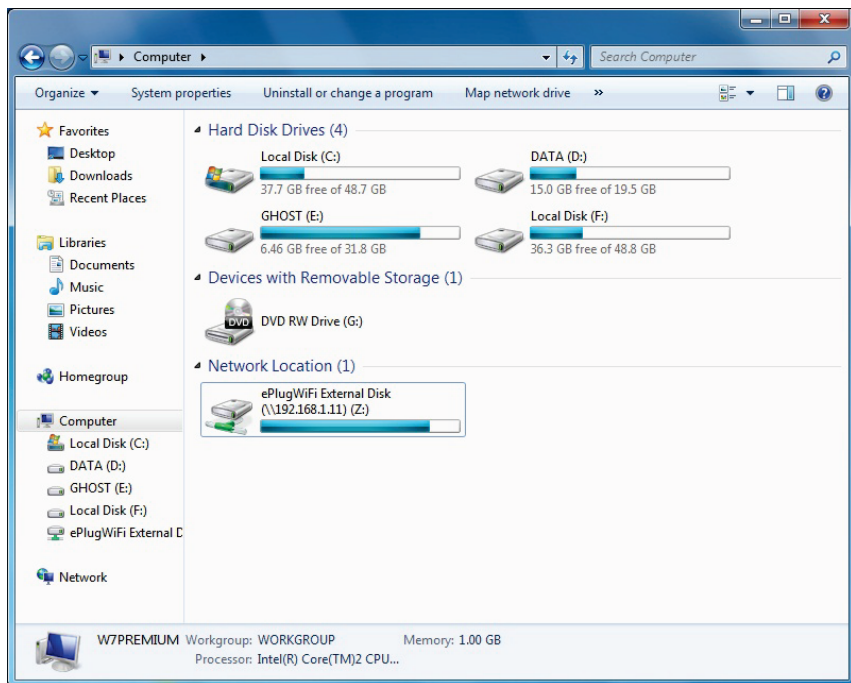
If you chose not to connect a USB storage device, you can now connect your USB key or your hard disk drive to the ePlug WiFi adapter's USB port.



Once the storage device has been detected, click the **Share a USB storage device** button.

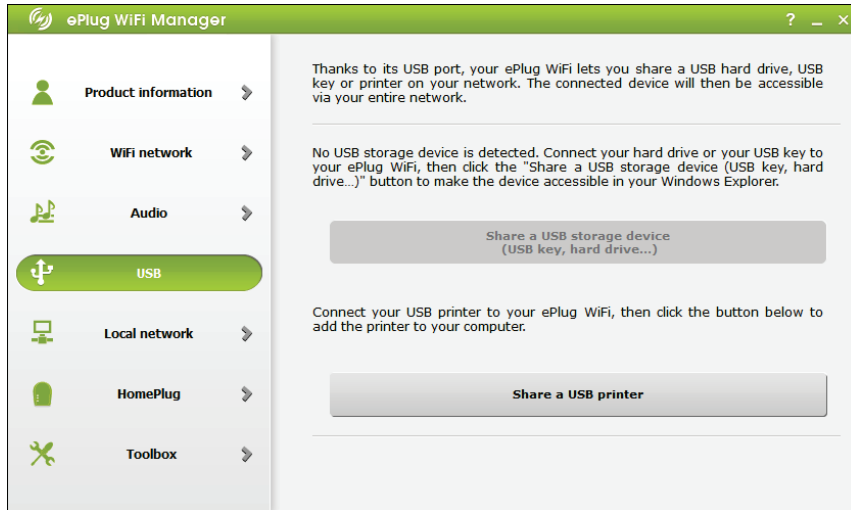


Click **Access my USB storage device**.



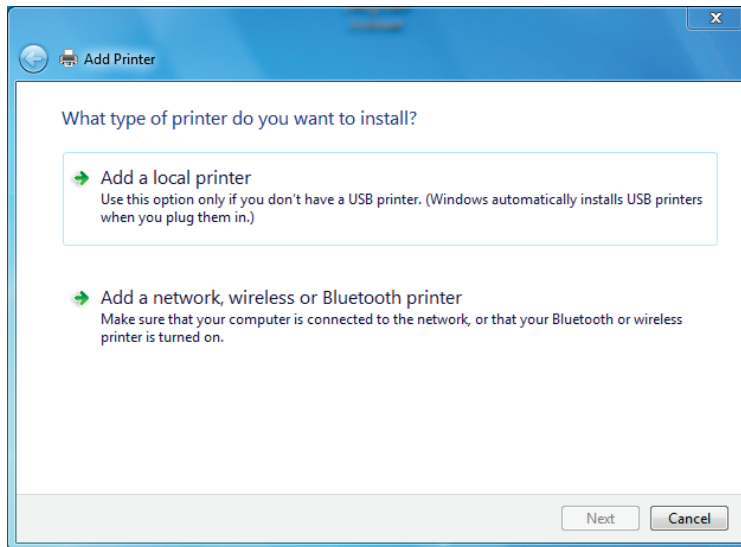
The Windows Explorer appears. The ePlug WiFi adapter now appears in the Network Location pane. Return to the ePlug WiFi adapter's setup wizard.

Connect the USB printer to the ePlug WiFi adapter's USB port. Click **Share a USB printer**.

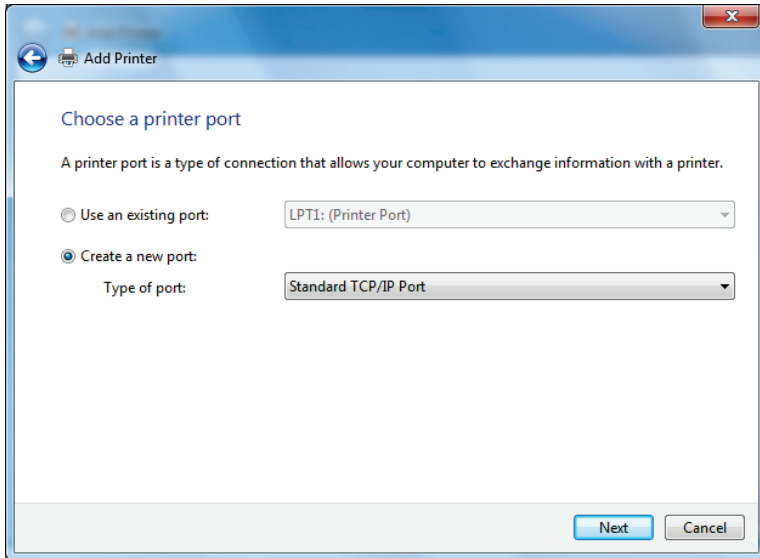


The Windows Add Printer wizard appears.

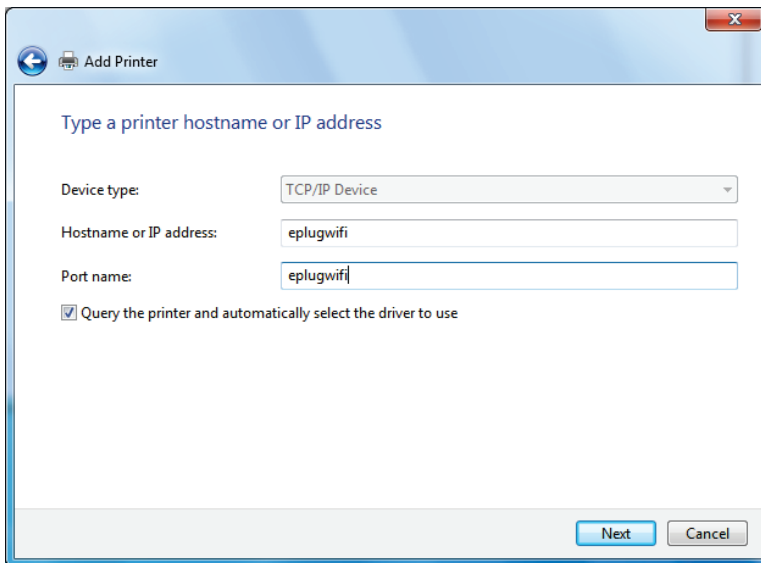
Click **Add a local printer**.



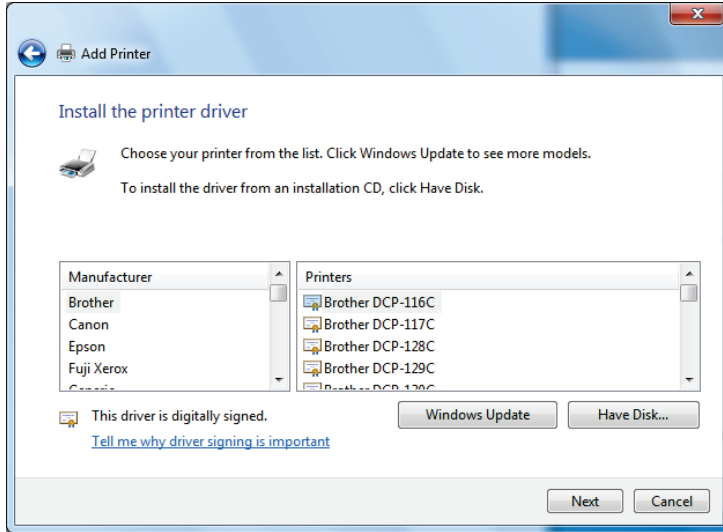
Select **Create a new port**, then select the option **Standard TCP/IP Port**, then click **Next**.



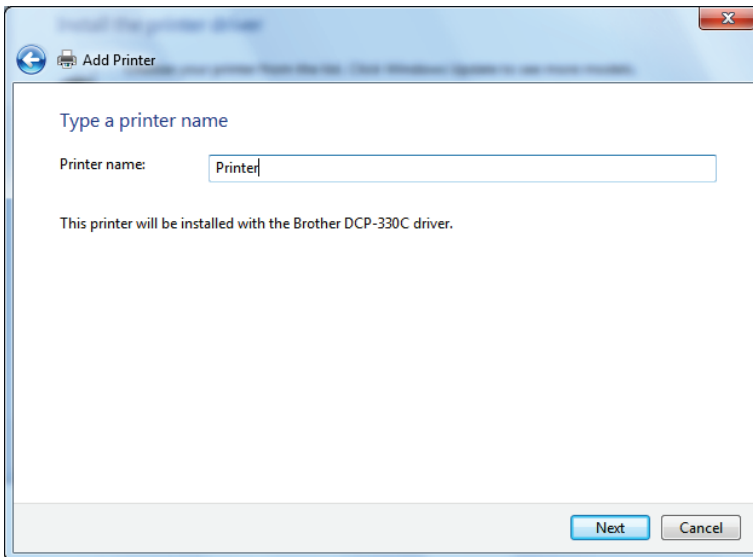
Enter the following host name and port name: **eplugwifi**, then click **Next**.



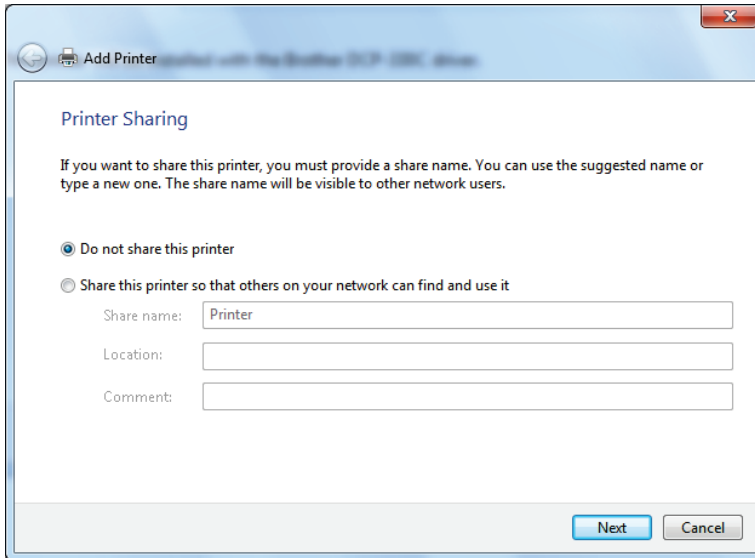
Select your printer's make and model, then click **Next**.



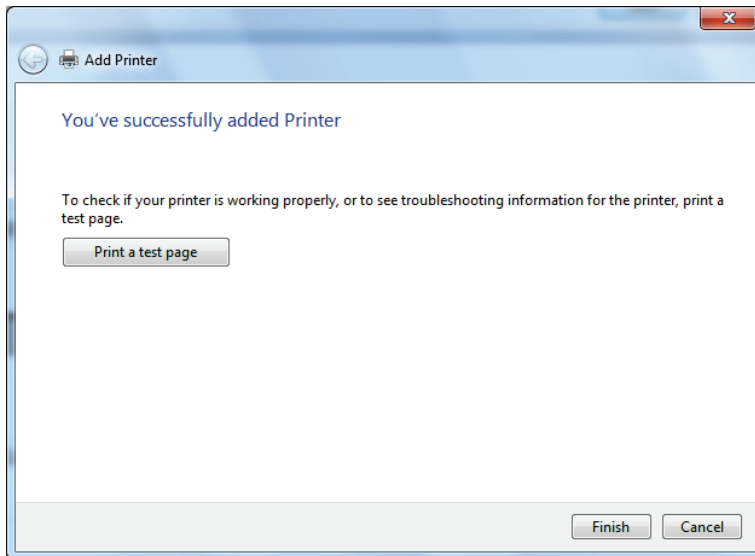
Specify the printer's name, then click **Next**.



If the following screen appears, select **Do not share this printer**. Click **Next**.

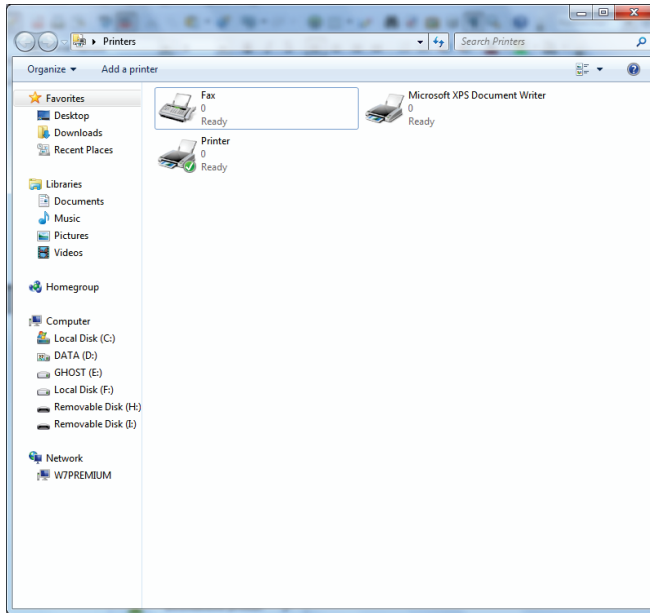


Print a test page to check whether your printer is working. Then, click **Finish**.

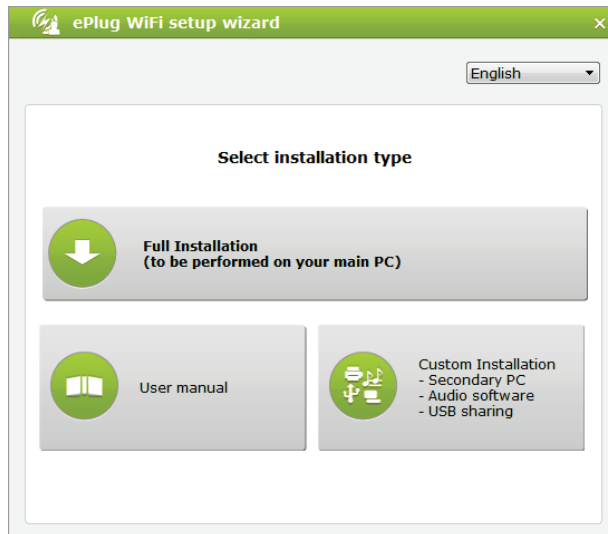


Return to ePlug WiFi Manager, and click on **Access my USB printer**.

Check that your printer appears in the list of available printers.



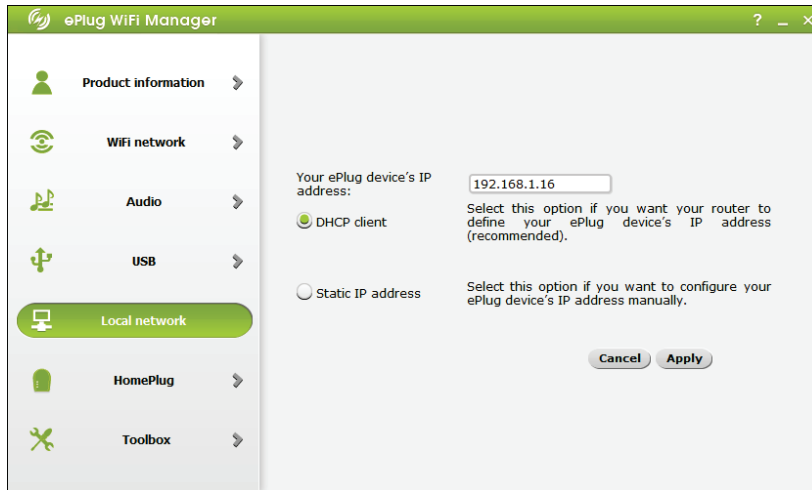
You must start the ePlug WiFi setup wizard and follow the **Custom installation** on every computer on which you wish to access the USB printer.



Click **Custom installation**, then **Share a USB printer**.

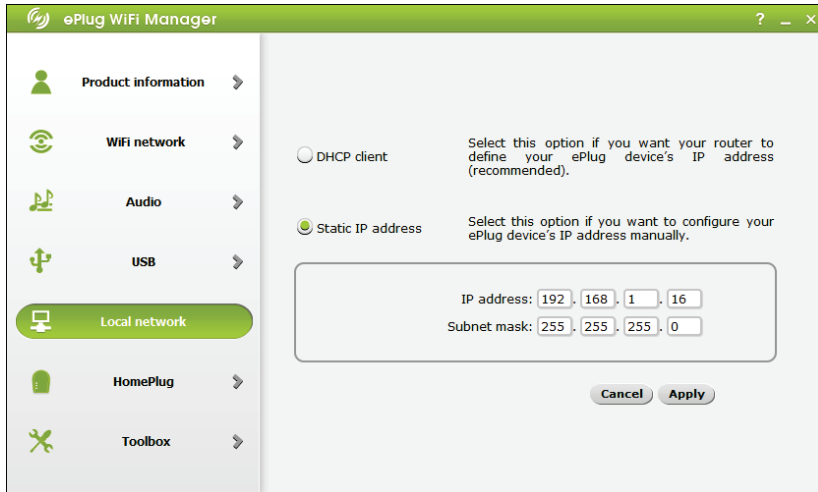
Proceed as previously instructed to install a printer using ePlug WiFi Manager.

5.6. Changing your ePlug WiFi adapter's IP address



An **IP address** is a unique address that the router (or modem-router, or Internet box) defines for the ePlug WiFi adapter. If you install several ePlug WiFi adapters, each of them can be identified separately, via its IP address, enabling you to connect it to the WiFi network.

Your ePlug WiFi adapter's default IP address is defined automatically by the router (or modem-router or Internet box). It's the most convenient solution.



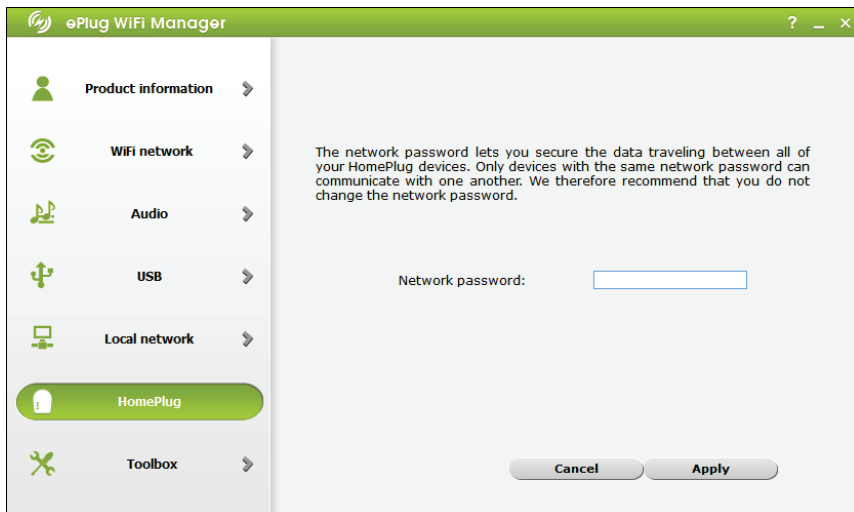
You can configure your ePlug WiFi adapter's IP address yourself, by selecting the **Static IP address**.



Please write the IP address down. If you forget it, you will not be able to connect to your access point.

Click **Apply** to confirm your settings.

5.7. Changing your ePlug WiFi adapter's password

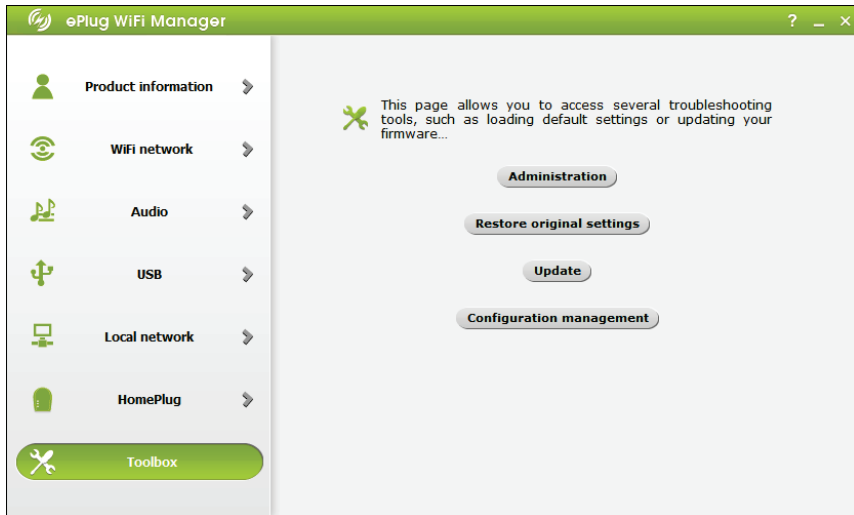


To change your ePlug WiFi adapter's password, enter a new password in the **Network password** field, then click **Apply**.

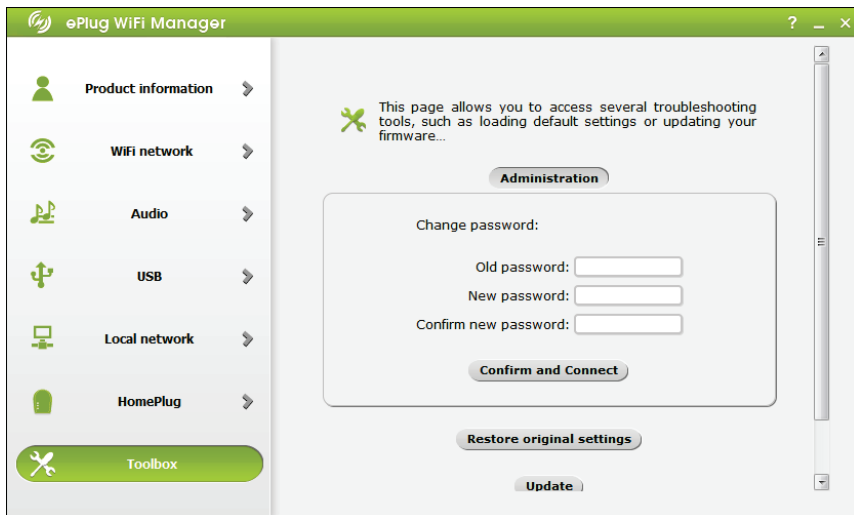


If you change your ePlug WiFi adapter's password, other PLC adapters will no longer be paired with it. You must therefore follow the pairing procedure for all adapters again, by pressing the pairing button located on each adapter, to reconnect them to the ePlug WiFi adapter's network.

5.8. A versatile toolkit

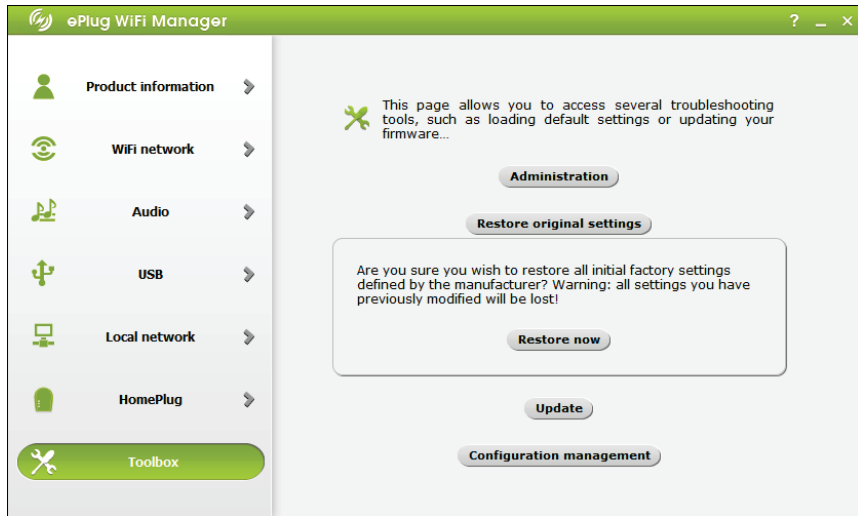


ePlug WiFi Manager provides a toolkit that you can use to change your connection password, restore your adapter's initial settings, update the management application and save your configuration and current settings.



To change the connection password in ePlug WiFi Manager, click the **Administration** button.

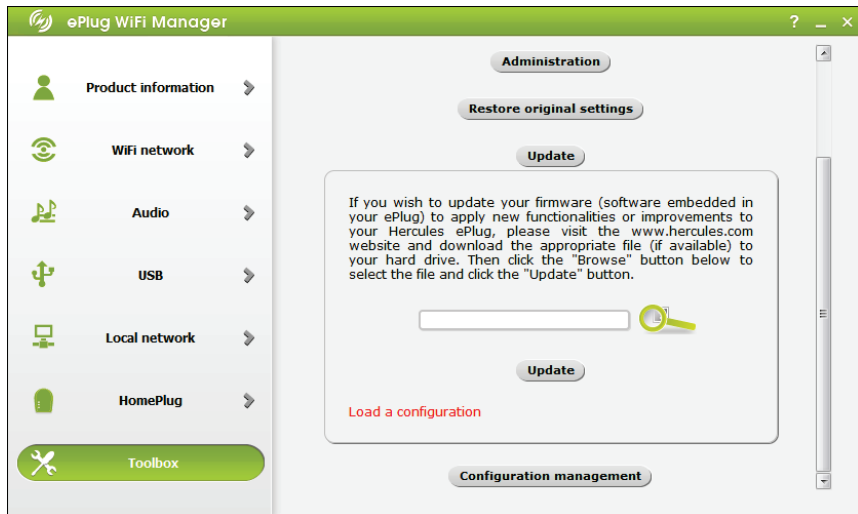
Enter your current password in the **Old password field**, then enter your new password and confirm it in the **Confirm new password field**; then, click the **Confirm and connect** button




To restore your adapter's original settings, click the **Restore now** button.



Please be aware that if you choose to restore the original settings, all previously modified settings will be deleted (WiFi security key, MAC address filtering, etc.) !



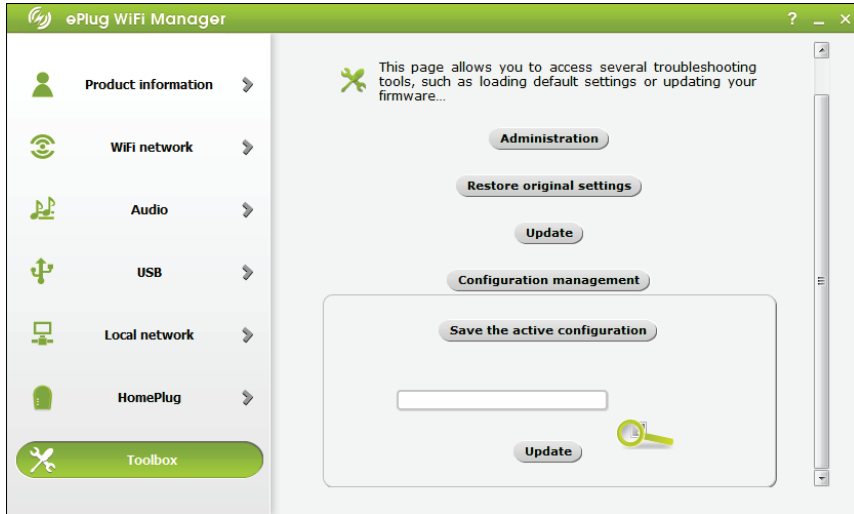
If you want to update your ePlug WiFi adapter's firmware (i.e. software) to upgrade it with new features or enhancements, please connect to the www.hercules.com website and download the new file – if available – to your hard disk drive.

Click the  button to select the firmware file, then click **OK**.

Click the **Update** button.



Please be aware that if you choose to upgrade your ePlug WiFi adapter's software, all previously modified settings will be deleted (WiFi security key, MAC address filtering, etc.) !



To save the configuration with the current settings, click the **Configuration management** button.

Click the **Save the active configuration** button.

Enter the saved configuration file's name, then click **OK**.

To load a saved configuration file, click the  button, then select the file location.

Click the **Update** button.

6. TECHNICAL SUPPORT

If you encounter a problem with your product, please go to <http://ts.hercules.com> and select your language. From there you will be able to access various utilities (Frequently Asked Questions (FAQ), the latest versions of drivers and software) that may help to resolve your problem. If the problem persists, you can contact the Hercules products technical support service ("Technical Support"):

By email:

To reach our Technical Support via email, you must first register online on the <http://ts.hercules.com/> website. The information that you provide will help our technicians to resolve your problem as quickly as possible.

Click on **Product Registration** and follow the instructions displayed onscreen.

If you have already registered your product, please enter your user info in the **Username** and **Password** fields, then click on **Login**.

By telephone (if you do not have Internet access):

United Kingdom	08450800942 Charged at local rate	Monday to Saturday from 8 a.m. to 7 p.m.
United States	1-866-889-5036 Free	Monday to Friday from 9 a.m. to 8 p.m. Saturday from 8 a.m. to 2 p.m. (Eastern Standard Time) Monday to Friday from 6 a.m. to 5 p.m. Saturday from 5 a.m. to 11 a.m. (Pacific Standard Time)
Canada	1-866-889-2181 Free	Monday to Friday from 9 a.m. to 8 p.m. Saturday from 8 a.m. to 2 p.m. (Eastern Standard Time) Monday to Friday from 6 a.m. to 5 p.m. Saturday from 5 a.m. to 11 a.m. (Pacific Standard Time)
Denmark	80887690 Free	Monday to Saturday from 9 a.m. to 8 p.m. (English)
Sweden	0200884567 Free	Monday to Saturday from 9 a.m. to 8 p.m. (English)
Finland	0800 913060 Free	Monday to Saturday from 10 a.m. to 9 p.m. (English)

Hours of operation and telephone numbers are subject to change. Please visit <http://ts.hercules.com> for the most up-to-date Technical Support contact information.

7. WARRANTY

Worldwide, Guillemot Corporation S.A. ("Guillemot") warrants to the consumer that this Hercules product will be free from material defects and manufacturing flaws for a period of two (2) years from the original date of purchase. Should the product appear to be defective during the warranty period, immediately contact Technical Support, who will indicate the procedure to follow. If the defect is confirmed, the product must be returned to its place of purchase (or any other location indicated by Technical Support).

Within the context of this warranty, the consumer's defective product will, at Technical Support's option, be either repaired or replaced. Where authorized by applicable law, the full liability of Guillemot and its subsidiaries (including for indirect damages) is limited to the repair or replacement of the Hercules product. The consumer's legal rights with respect to legislation applicable to the sale of consumer goods are not affected by this warranty.

This warranty shall not apply: (1) if the product has been modified, opened, altered, or has suffered damage as a result of inappropriate or abusive use, negligence, an accident, normal wear, or any other cause not related to a material defect or manufacturing flaw; (2) in the event of failure to comply with the instructions provided by Technical Support; (3) to software not published by Guillemot, said software being subject to a specific warranty provided by its publisher.

8. ENVIRONMENTAL PROTECTION RECOMMENDATION



At the end of its working life, this product should not be disposed of with standard household waste, but rather dropped off at a collection point for the disposal of Waste Electrical and Electronic Equipment (WEEE) for recycling.

This is confirmed by the symbol found on the product, user manual or packaging.

Depending on their characteristics, the materials may be recycled. Through recycling and other forms of processing Waste Electrical and Electronic Equipment, you can make a significant contribution towards helping to protect the environment.

Please contact your local authorities for information on the collection point nearest you.

Trademarks

Hercules® is a registered trademark of Guillemot Corporation S.A. Intel® and Pentium® are registered trademarks of Intel Corporation. Hercules ePlug™ is a trademark of Guillemot Corporation S.A. Microsoft® Windows® XP, Vista and 7 are either trademarks or registered trademarks of Microsoft Corporation in the United States and/or other countries. Mac OS® is a registered trademark of Apple Computer, Inc. in the United States and/or other countries. Broadcom is a registered trademark of Intel Corporation. All other trademarks and brand names are hereby acknowledged and are property of their respective owners. Illustrations not binding.

Declaration of conformity with EU directives

This device can be used in: AT, BE, FR, DE, IE, IT, LU, NL, PL, ES, SE, GB, FI, CH.

Hereby, GUILLEMOT CORPORATION, Carentoir France, declares that this **Hercules ePlug WiFi** device is in compliance with the essential requirements and other relevant provisions of Directive 1999/5/EC. The Declaration of Conformity can be consulted at this website address:

ftp://ftp.hercules.com/wifi/DoC/ePlug200WiFi/DoC-eng_Hercules_ePlug-200WiFi-Duo.pdf



Hercules is a division of Guillemot Corporation.



Federal Communication Commission Interference Statement

This equipment has been tested and found to comply with the limits for a Class B digital device, pursuant to Part 15 of the FCC Rules. These limits are designed to provide reasonable protection against harmful interference in a residential installation. This equipment generates, uses and can radiate radio frequency energy and, if not installed and used in accordance with the instructions, may cause harmful interference to radio communications. However, there is no guarantee that interference will not occur in a particular installation. If this equipment does cause harmful interference to radio or television reception, which can be determined by turning the equipment off and on, the user is encouraged to try to correct the interference by one of the following measures:

- Reorient or relocate the receiving antenna.
- Increase the separation between the equipment and receiver.
- Connect the equipment into an outlet on a circuit different from that to which the receiver is connected.
- Consult the dealer or an experienced radio/TV technician for help.

This device complies with Part 15 of the FCC Rules. Operation is subject to the following two conditions: (1) This device may not cause harmful interference, and (2) this device must accept any interference received, including interference that may cause undesired operation. This device and its antenna(s) must not be co-located or operating in conjunction with any other antenna or transmitter. FCC Caution: Any changes or modifications not expressly approved by the party responsible for compliance could void the user's authority to operate this equipment.

IMPORTANT NOTE:

FCC Radiation Exposure Statement:

This equipment complies with FCC radiation exposure limits set forth for an uncontrolled environment. This equipment should be installed and operated with minimum distance 20cm between the radiator & your body.

Copyright

© Guillemot Corporation S.A. 2012. All rights reserved.

This publication may not be reproduced in whole or in part, summarized, transcribed, stored in a retrieval system, or translated into any language or computer language, in any form or by any means, electronic, mechanical, magnetic, photocopying, recording, manual or otherwise, without the prior written permission of Guillemot Corporation S.A.

Disclaimer

Guillemot Corporation S.A. reserves the right to make changes to specifications at any time and without notice. The information provided by this document is believed to be accurate and reliable. However, no responsibility is assumed by Guillemot Corporation S.A. either for its use or for the infringement of patents or other rights of third parties resulting from its use. This product may exist in a light or special version for PC integration or other purposes. Certain functions detailed in this manual may not be available in these versions. Wherever possible, a README.TXT will be included on the installation CD-ROM detailing the differences between the supplied product and the product described in the present documentation.

End-user software license Agreement

IMPORTANT: please read the Agreement carefully prior to opening and installing the Software. By opening the Software package, you agree to be bound by the terms of this Agreement. The Software enclosed in this package is licensed, not sold, and is only available under the terms of the present license Agreement. If you do not agree with the terms hereafter, you must promptly return the Software within 15 days, together with the entire contents of the box, to the place of purchase. The Guillemot Corporation S.A. Software (hereafter named the "Software") is copyrighted by Guillemot Corporation S.A. All rights are reserved. The term "Software" refers to all documentation and related material, including drivers, executable programs, libraries and data files. The purchaser is granted a license to use the Software only. The licensee also agrees to be bound by the terms and conditions of the present Agreement concerning copyright and all other proprietary rights for any third party Software, documentation and related material included in the Software package.

Guillemot Corporation S.A. reserves the right to terminate this license in the event of failure to comply with any of the terms or conditions laid out in the present Agreement. On termination, all copies of the Software shall immediately be returned to Guillemot Corporation S.A.; the purchaser remaining liable for any and all resulting damages.

License:

1. The license is granted to the original purchaser only. Guillemot Corporation S.A. retains all title to and ownership of the Software and reserves all rights not expressly granted. The licensee is not permitted to sub-license or lease any of the rights that are hereby granted. Transfer of the license is permitted, provided that the transferor does not retain any part or copy of the Software and the transferee accepts to be bound by the terms and conditions of the present Agreement.
2. The licensee may only use the Software on a single computer at any time. The machine-readable portion of the Software may be transferred to another computer provided it is previously erased from the first machine and there is no possibility that the Software can be used on more than one machine at any one time.
3. The licensee acknowledges the copyright protection belonging to Guillemot Corporation S.A. The copyright notice must not be removed from the Software, nor from any copy thereof, nor from any documentation, written or electronic, accompanying the Software.
4. The licensee is granted the right to make one back-up copy of the machine-readable portion of the Software on the condition that all copyright and proprietary notices are also reproduced.
5. Except where the present Agreement expressly permits, the licensee is strictly prohibited from engaging in, nor may he permit third parties to engage in, the following: providing or disclosing the Software to third parties; providing use of the Software in a network, multiple PCs, multi-user or time-sharing arrangement where the users are not individual licensees; making alterations or copies of any kind of the Software; making any attempt to disassemble, de-compile or reverse engineer the Software in any way or form, or engaging in any activity aimed at obtaining underlying information not visible to the user during normal use of the Software; making copies or translations of the User Manual.