

eCAFÉ™ CONNECT

CONTENTS

1.	INTRODUCTION	3
2.	CONNECTING TO THE INTERNET WITH eCAFÉ™ CONNECT	4
2.1.	Accessing to eCAFÉ™ CONNECT.....	4
2.2.	Connecting automatically to a network using the WPS feature	5
2.3.	Connecting manually to a non-secure network (no safety key type appears in the Secure field)	6
2.4.	Connecting manually to a secure network (a safety key type appears in the Secure field)	6
2.5.	Connecting manually to a hidden network (the Network name (SSID) field is empty)	6
2.6.	For more information about the connection status:.....	7
2.7.	Disconnecting from a network.....	7
3.	VIEWING, MODIFYING OR ADDING FAVORITES – CREATING AN AD HOC NETWORK.....	9
3.1.	Security options	9
3.2.	View/Modify Favorites.....	10
3.3.	Adding a new Favorite manually or creating an Ad hoc network	11
3.4.	Advanced Settings.....	13
3.5.	About	14
3.6.	Exiting eCAFÉ™ CONNECT	14

1. INTRODUCTION

eCAFÉ™ CONNECT is a software application developed by Hercules, which enables you to manage your network connections (both Ethernet and WiFi) in a user-friendly, intuitive way. It is the essential complement of the eCAFÉ™'s built-in WiFi board.

The following table shows the main features for accessing eCAFÉ™CONNECT and Internet.



Launch eCAFÉ™ CONNECT from the Windows Desktop
Option no. 1



Launch eCAFÉ™ CONNECT from the status bar
Option no. 2







WiFi feature activation/deactivation button (located at the front of the eCAFÉ™)

2. CONNECTING TO THE INTERNET WITH eCAFÉ™ CONNECT

2.1. Accessing to eCAFÉ™ CONNECT

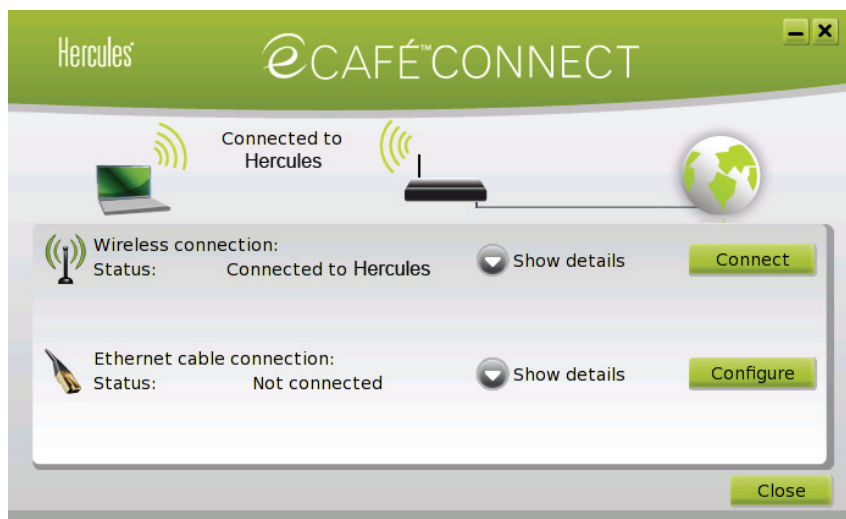
To access eCAFÉ™CONNECT:

- Right-click on the  icon located on the Windows Desktop using the right touchpad button.

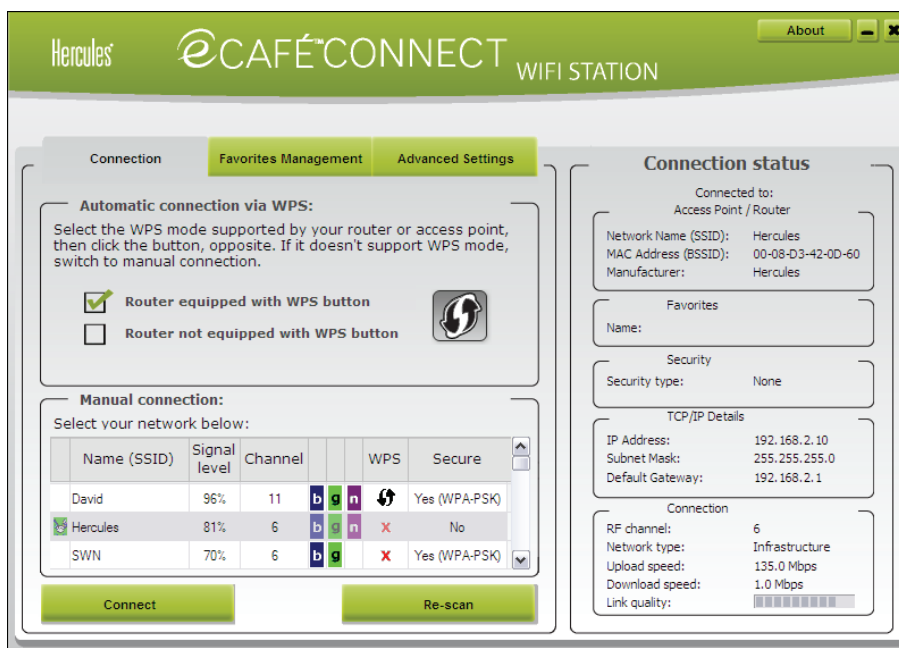
 This feature is activated when the system starts up, and the WiFi indicator  is on. You can deactivate this WiFi feature at any time by pressing the  button on the front of eCAFÉ™. The computers WiFi  indicator switches on or off as a result to show the status.

We shall now proceed to locate the available WiFi networks and proceed to set up a wireless connection to the Internet.


- Click on the **Connect** button facing the wireless connection.





The eCAFÉ™ CONNECT WiFi Station application proceeds to automatically locate the available networks, and displays the detected networks.



2.2. Connecting automatically to a network using the WPS feature

 **WPS (Wi-Fi Protected Setup™)** is a technology that enables you to easily connect your eCAFÉ™ to a WPS compatible device (a DSL WPS router, for instance), over a wireless network connection.

To find out whether your router is WPS compatible, look for the  or  logos on the device or packaging.

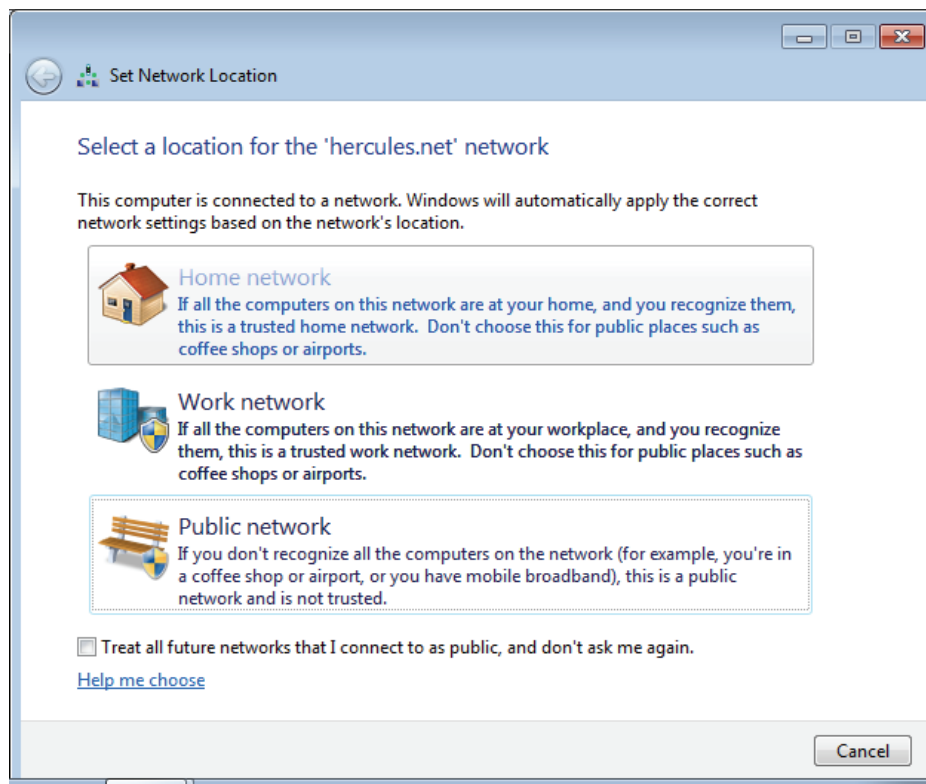
- In the **Automatic connection via WPS** window, check the option **Router equipped with a WPS button**.

- Click on the connection button .

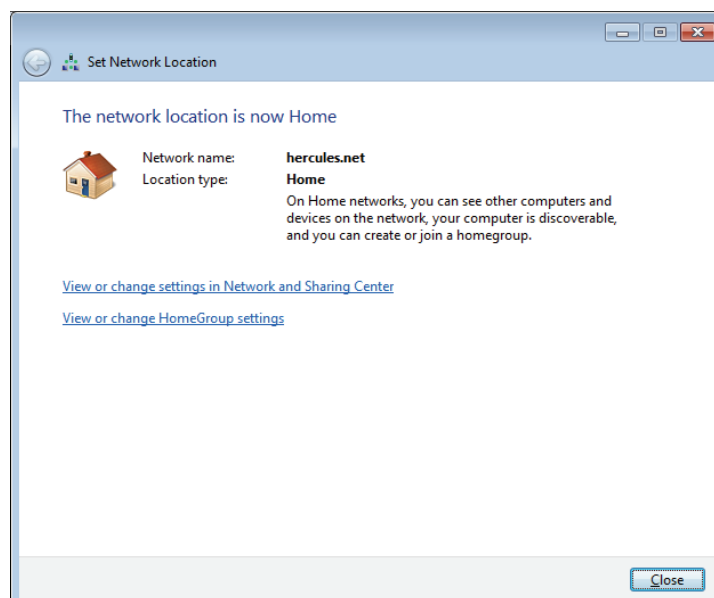
For further information regarding connections using the WPS feature, please refer to your WPS compatible router's manual.

After the 1st connection to a detected network:

Windows 7 asks you to choose a location type: domestic network, office network or public network.



Follow the instructions on the screen to assign the right type of location to your network, then click on **close** at the end of the operation.



2.3. Connecting manually to a non-secure network (no safety key type appears in the Secure field)

- In the **Manual connection** window, select the required network.
- Click on the **Connect** button.

A *Connection Wizard* launches, and asks you if you wish to add this network to your favourites.

- If you wish to do so, you can add the network to your favourites by checking the **Yes** box; you will then be requested to provide a name for the network.

A few seconds later, a green icon displays facing the network, indicating that you are connected.

If you want your computer to automatically connect to a specific network when the WiFi feature is activated, add the network to your Favourites list and select the **Connect automatically** option.



If the connection to the chosen network fails in the **Infrastructure mode**, check your router's security settings (safety key, MAC address filtering etc.).

Note:

The **Infrastructure mode** is a communication mode that consists in creating a network connecting several computers equipped with a WiFi feature via a wireless access point such as an Internet box, a modem/router or a router connected to a modem. The **Infrastructure mode** is ideal for exchanging data or playing games over a network, but also for sharing an Internet connection and/or a printer between several computers.

The **Ad hoc mode** is a mode that enables several computers equipped with a WiFi feature to communicate directly with each other. This mode is also called "Peer to Peer".

A **MAC address** is a unique address created by the router's vendor; it serves to identify this device on a network. The MAC address is comprised of the organisation's (i.e. the vendor's) identifier, followed by the device's unique identifier.

2.4. Connecting manually to a secure network (a safety key type appears in the Secure field)

- In the **Manual connection** window, select the required network.
- Click on **Connect**.
- Enter the safety key when asked by the WiFi Station application.
- If you wish to do so, you can add the network to your favourites by checking the **Yes** box; you will then be requested to provide a name for the network.



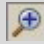
If you wish to connect to a secure network, you must have access to the network's safety key. Before the connection can be made, the eCAFÉ™ CONNECT WiFi Station application will ask you to provide this key (a message will help you identify the required key type).

2.5. Connecting manually to a hidden network (the Network name (SSID) field is empty)

If, among the located networks, one or more networks do not have a name (i.e. the Network name (SSID) field is empty), this means that the network is not broadcasting its name. To connect to this network, select it, then:







- In the **Manual connection** window, select the required network.
- Enter the network's name (SSID) in the window that displays.
- If this network is secure, enter the used safety key.
- If you wish to do so, you can add the network to your favourites by checking the **Yes** box; you will then be requested to provide a name for the network.



For enhanced navigation comfort, you can either use your Internet browser's zoom  feature or press key F11 to switch from a fullscreen display to a windowed display.

2.6. For more information about the connection status:

The eCAFÉ™ CONNECT icon appears in the notification area. It provides updated information about the connection's status:

	Internet connection: an Ethernet or WiFi peripheral is active and physically connected; Internet access is available.	Your Internet connection is perfectly operational.
	Local area connection: an Ethernet or WiFi peripheral is active and physically connected; no Internet access is available.	You are connected to a modem, a router or an Internet box or to a corporate network; however, this device or network is not connected to the Internet. Please check the Internet connection settings on your local area network or your modem.
	Connection problem: an Ethernet or WiFi peripheral is active and physically connected; no Internet access is available.	Please check your network connection settings (IP address, subnet mask etc.) on your local area network or your modem. If necessary, contact your router's or modem/router's vendor.
	No connection: an Ethernet or WiFi device is active but is not connected physically.	Connect your eCAFÉ™ to a local area network via the WiFi connection (please refer to the previous section) or via the Ethernet port.
	No peripheral: no Ethernet and/or WiFi peripheral have been activated.	Activate your peripheral: to activate your WiFi peripheral, press  (located at the front of the eCAFÉ™).

2.7. Disconnecting from a network

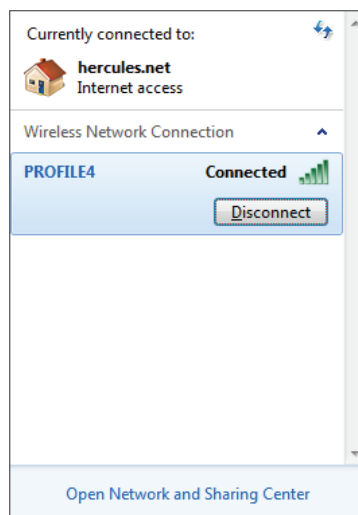
To disconnect, press  on the front of the eCAFÉ™. The computer's WiFi  indicator switches off.

Alternative:

- Click on the network connection icon in the Windows status bar.

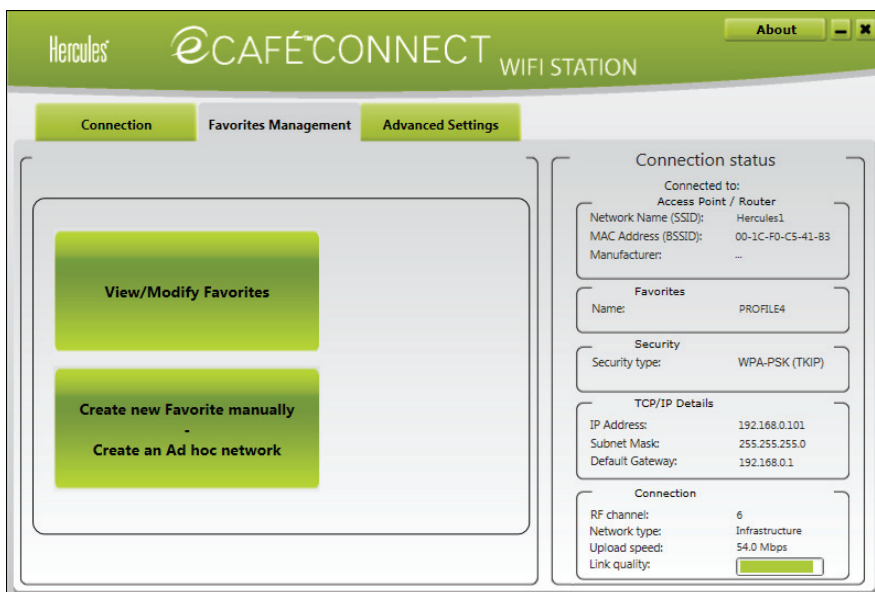


- Select the connected network, then press the **Disconnect** button.




- To reconnect to a network, start up a new network search in eCAFÉ™ CONNECT.

3. VIEWING, MODIFYING OR ADDING FAVORITES – CREATING AN AD HOC NETWORK




A Favorite is a group of settings for connection to a known Infrastructure or Ad hoc network (your own, a neighbor’s, a friend’s). eCAFÉ™ CONNECT allows you to easily store the settings for a network in memory, or view or modify existing Favorites.

 In an Ad hoc (Peer to Peer) network, creating a Favorite is the equivalent of actually creating the wireless link between the computers.

3.1. Security options

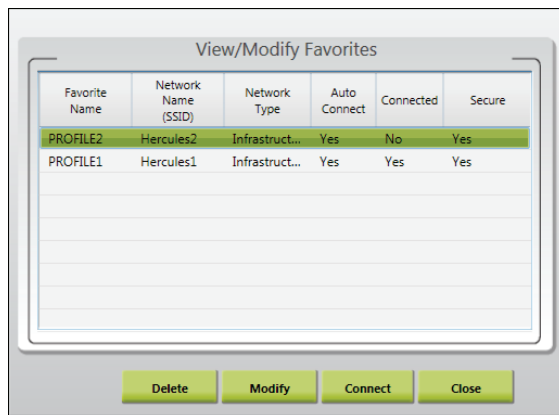
To avoid having an individual on the outside improperly connect to your network, we strongly recommend that you secure your network. The table below sums up the 4 security types supported by eCAFÉ™ CONNECT.

Type	Level of security	Key used
WEP	The lowest level of security, in which a single encryption key is used for the data exchanged. Each wireless client in the network must use the same key to decode the transmission.	64-bit (10 characters) or 128-bit (26 characters) key in hexadecimal format.
WEP (Shared)	Level of security based on WEP, moreover employing an authentication method via a shared key.	64-bit (10 characters) or 128-bit (26 characters) key in hexadecimal format.
WPA-PSK (AES)	Level of security superior to WPA-PSK (TKIP), using an encryption method based on the new IEEE 802.11i security standard.	Password with a minimum of 8 alphanumeric characters .
WPA-PSK (TKIP)	Latest-generation high level of security, specially designed for environments such as a small business or the home, using a pre-shared key.	Password with a minimum of 8 alphanumeric characters .
WPA2-PSK (AES)	Level of security superior to WPA2 (TKIP), also of the latest generation, specially designed for environments such as a small business or the home, using a pre-shared key.	Password with a minimum of 8 alphanumeric characters. An alphanumeric character corresponds either to a number (0-9), or to a letter (a-z or A-Z).
WPA2-PSK (TKIP)	Latest-generation very high level of security, specially designed for environments such as a small business or the home, using a pre-shared key.	Password with a minimum of 8 alphanumeric characters. An alphanumeric character corresponds either to a number (0-9), or to a letter (a-z or A-Z).

 A **hexadecimal key** is composed of numbers from 0 to 9 and letters from A to F (example: A123BCD45E for a 64-bit key). An **alphanumeric character** corresponds either to a number (0-9), or a letter (a-z or A-Z).

3.2. View/Modify Favorites

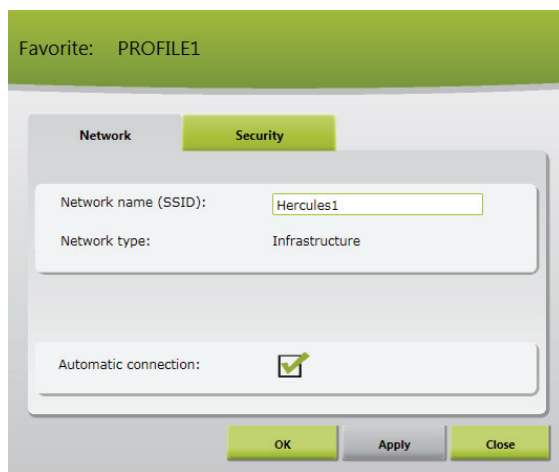
The **View/Modify Favorites** button displays a window containing Favorites that have already been saved.



View/Modify Favorites window

In this window, you can:

- **Delete** a Favorite from the list.
- **Modify** the basic, security or advanced settings for your Favorite.
- **Connect** to the network corresponding to the selected Favorite.
- **Close** the **View/Modify Favorites** window to return to the **Favorites Management** tab.



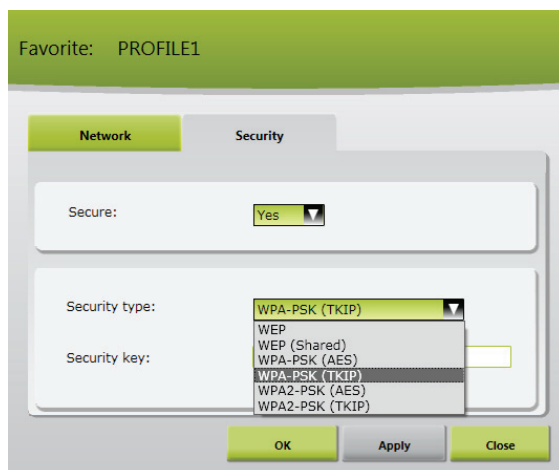
Network tab (accessible after clicking the Modify button)

Network name (SSID): enter the SSID (Service Set Identifier), which is to say the unique name shared by clients and the access point in your wireless network.

Network type: **Infrastructure** or **Ad hoc**.

RF channel (Ad hoc only): select the RF channel from a list of available channels (1 to 13), channel 1 being the default channel.

Automatic connection: tick this box to have the client automatically connect to this network.



Security tab (accessible after clicking the Modify button)

Secure: the network may be unsecured (**No**) or secure (**Yes**); in this case, you must select the security type and enter an encryption key.

Security type: **WEP**, **WEP (Shared)**, **WPA-PSK (TKIP)**, **WPA-PSK (AES)** or **WPA2**.

Security Key: enter an encryption key of 10 or 26 hexadecimal characters for a WEP key, or from 8 to 63 characters for a WPA-PSK key.

A hexadecimal key is composed of numbers 0 to 9 and letters A to F (example: A123BCD45E).

3.3. Adding a new Favorite manually or creating an Ad hoc network


A practical way to create a Favorite (Infrastructure or Ad hoc network) specifically for your home or office, for example, is to use the **New Favorite creation Assistant**. To launch this Assistant, you must select a network in the list of networks detected by WiFi Station N, then click the **Add to Favorites** button, accessible via the main window.

If you know your network settings, you can also create your Favorite or Ad hoc network yourself by clicking the **Add new Favorite manually/Create an Ad hoc network** button.


The manual creation of a new Favorite or an Ad hoc network includes the following steps:

- Step 1/6: enter a name for your Favorite (for example: Work, Sport, etc.).

- Step 2/6: select either **Infrastructure** or **Ad hoc** mode for your network architecture; Infrastructure architecture is selected by default. **Reminder: Infrastructure** is a type of network with an access point + at least two computers, whereas in **Ad hoc** mode there will be two or more computers without an access point (one of the computers creates the network, while the other only detects it). If you have already clicked the **Add to Favorites** button, the fields will already be filled in.

 If you opt for **Ad hoc** mode, you must select the **RF channel** from a list of available channels (1 to 13), channel 1 being the default channel.

- Step 3/6: enter the name of your network (SSID name). If you have already clicked the **Add to Favorites** button in the **Connection** window, the field will be filled in with the appropriate SSID name.

 If you want to create your **Ad hoc** network, give it the name of your choice here.

Step 4/6: Security type

Is your network secure?

Yes

No

Security type: WPA2-PSK (TKIP)


Enter the security key used by your access point/router.

qwerty12345

A valid security key contains 64 hexadecimal characters (a hexadecimal character is a number from 0 to 9, or a letter from A to F), or 8 to 63 ASCII characters (an ASCII character is any character on your keyboard).

Back Next Cancel

- Step 4/6: indicate whether or not your network is secured. **No** is selected by default. If you know the security settings, click **Yes**. Next, select your **Security Type** from the drop-down list and provide the **Security key** (10 hexadecimal characters, for example, for WEP encryption).

 In **Infrastructure** mode, the security key corresponds to the key entered in the modem router. In **Ad hoc** mode, you enter your own security key; it will be required of any devices attempting to connect to your network.

Step 5/6: Automatic Connection

Do you want to automatically connect to this network when it is detected?

Yes

No

Back Next Cancel

- Step 5/6: select whether you wish to automatically connect to the network each time your computer starts up. **Yes** is selected by default.

Step 6/6: Save Favorite

Congratulations: your Favorite is now configured. Please verify the settings below and save them:

Favorite name: Home

Network Type: Infrastructure

Network Name (SSID): Hercules3

Security type: WPA2-PSK (TKIP)

Password: qwerty12345

Back Save Cancel


- Step 6/6: the connection settings you have just defined are summed up in this screen. Click **Save** to add your network to the list of Favorites.

In Infrastructure mode:

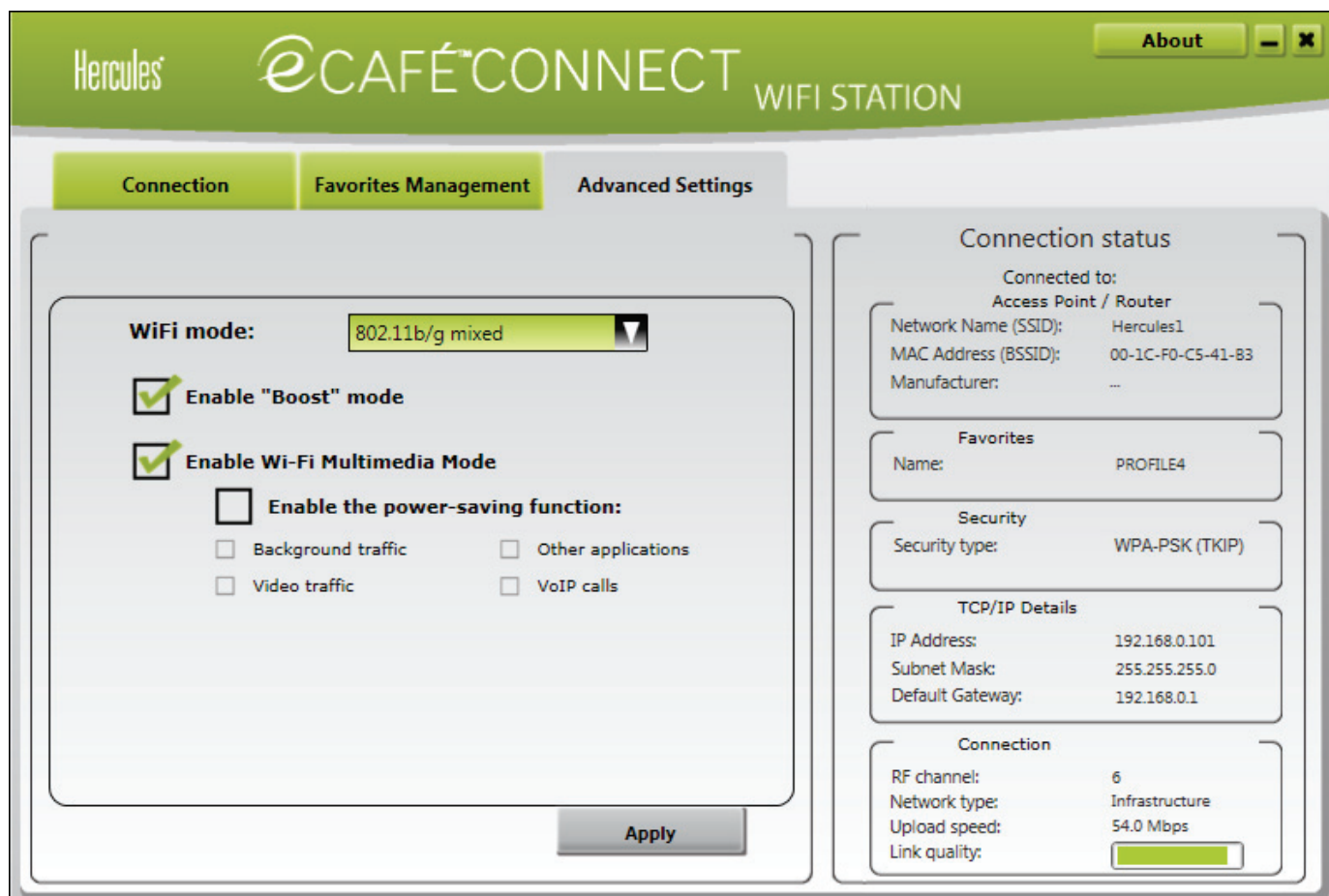
- If the network is not detected, or if you are already connected to this network: the network is simply saved in the list of Favorites.
- If the network is detected, but you are not currently connected to it, a dialog box prompts you to connect.

In Ad hoc mode:

- If the network is not detected: a dialog box prompts you to enable the network.
- If you are already connected to the network: the network is simply saved in the list of Favorites.
- If the network is detected, but you are not currently connected to it, a dialog box prompts you to connect.

 Automatic connection to an **Ad hoc** network disables automatic connection to **Infrastructure** networks saved in your Favorites. If the Ad hoc network is not detected when your computer starts up (which is to say, if it has not been created and enabled on another computer in your network), it is automatically enabled on your computer (it is then detected by the other computers in your network).

3.4. Advanced Settings



The **Advanced Settings** tab contains the advanced connection settings for the client in your WiFi network. We recommend that you **DO NOT** modify these settings unless you know exactly what you are doing.

- **WiFi mode:** select the **802.11b/g mixed** mode (the key will function with the 802.11b and g standards only) or the **802.11b/g/n mixed** mode (the key will function with the 802.11b, g and n standards).



If, apart from your eCAFÉ™ WiFi N version, you only have 802.11b or 802.11g devices, it is preferable to select the **802.11b/g mixed** mode. In this way, you will achieve better performance in terms of transfer rates. In effect, detection of the 802.11n standard slightly increases processing time.

If you don't know whether your products are 802.11b, g and/or n, select the **802.11b/g/n** option.

- **Enable "Boost" mode:** this mode consists of sending data packets when bandwidth is less in demand, in order to improve transfer speed performance. This proprietary technology only functions with Hercules WiFi N products.

- **Enable Wi-Fi Multimedia Mode:** this mode allows you to assign a priority with respect to the types of data that are circulating on the network. If you select this option, the priorities will be assigned as follows:

Priority	Type
1	Voice over IP (calls made over the Internet)
2	Video data
3	Other applications which frequently use the network (Internet browser...)
4	Background task applications (printing jobs, downloads, email...)

For example, if bandwidth is insufficient to allow for making a call via the Internet, watching a video, surfing the Internet and downloading files, WMM mode will hold off on the downloads, Internet browsing, and the video. The goal is to guarantee optimal comfort of use for the main task at hand.

You can enable or disable this option freely. You should know, however, that if you disable this option, bandwidth will be shared between all current tasks, without order of priority, which may reduce your comfort of use (for example, untimely lapses in your calls via the Internet or your videos, or a slowdown in terms of your downloads).



The WMM function is only compatible with other WMM devices.

- **Enable the power-saving function:** enable this mode if you want to save energy on mobile devices connected to your network via WiFi. You can then select the types of data concerned: VoIP calls, video, background tasks or other applications.

The **Apply** button validates the selected settings.

3.5. About

The **About** button, located in the top right-hand corner of the window, displays information regarding the version of the WiFi Station N utility and the version of drivers used by the WiFi client.

3.6. Exiting eCAFÉ™ CONNECT

The **Close** button allows you to move eCAFÉ™ CONNECT to the background, but the application remains enabled. To exit eCAFÉ™ CONNECT completely, you must right-click the eCAFÉ™ CONNECT icon in the Windows taskbar and select **Exit**.

Registered trademarks

Hercules® and eCAFÉ™ are registered trademarks of Guillemot Corporation S.A. Microsoft®, Windows®, Windows Live®, Microsoft® Windows® 7, MSN®, Internet Explorer® and the Windows flag are trademarks or registered trademarks of Microsoft Corporation in the United States and/or in other countries. Wi-Fi is a registered trademark of the Wi-Fi Alliance. All other registered trademarks and brand names are hereby acknowledged and are the property of their respective owners. Illustrations not binding. Contents, designs and specifications are liable to change without prior notice and may vary according to countries.

Copyright

© 2009 Guillemot Corporation S.A. All rights reserved.

No part of this manual may be copied, summarised, issued, posted, stored in a search engine or translated in any language or computer language, for any purpose or by any means that may be, whether electronic, mechanical, magnetic, manual, by means of photocopies, recordings or others, without the express authorisation in writing of Guillemot Corporation S.A.

End User License Agreement

IMPORTANT: Please read the following End User License Agreement before using the eCAFÉ™ device. The term "Software" refers to all executable programs, managers, libraries, data files and to any documentation relating to the programs, as well as the complete operating system included in the eCAFÉ™ product. The Software is licensed, and not sold, to the User, exclusively for use complying with the terms of this License Agreement. You hereby accept and agree to abide by the Terms & Conditions of this License Agreement. If you disagree with the Terms & Conditions of this License Agreement, please do not use the Software.

The Software is protected by international copyright laws and agreements, as well as other international laws and agreements relating to intellectual property.

The Software (excluding the software sub-applications) remains the property of Guillemot Corporation S.A. All rights reserved. Guillemot Corporation S.A. grants only a limited and non-exclusive right to use the Software.

Guillemot Corporation S.A. reserves the right to cancel this License Agreement in the event of failure to abide by its Terms & Conditions.

License granted

1. The license is granted to the original Buyer alone. Guillemot Corporation S.A. remains the sole owner and holder of the Software (excluding the software sub-applications), and reserves all rights that are not expressly granted by this License Agreement. The User is not allowed to sub-license the rights granted by this License Agreement. The User is allowed to transfer this License, provided that the original Buyer retains no part of the Software and that the Transferee reads and accepts the Terms & Conditions of this License Agreement.
2. The Buyer may only use the software on one computer at a time. The machine-readable part of the Software may be copied to another computer, provided that the Software is deleted from the first computer and that it is impossible to use the Software on several computers at the same time.
3. The Buyer hereby acknowledges and accepts the copyright belonging to Guillemot Corporation S.A. The copyright shall in no event be removed from the Software, nor from any documentation, whether printed or electronic, provided with the Software.
4. The License grants the User the right to perform one (1) copy of the machine-readable part of the Software for archival purposes, provided that the User also copies Software's copyright.
5. Except within the limits expressly allowed by this License Agreement, the Buyer may not agree or allow any third party to agree to: grant a sublicense; provide or divulge the Software to other third parties; allow use of the Software on several computers at a time; perform alterations or copies of any kind; reverse engineer, decompile or modify the Software in any way or attempt to obtain information relating to the Software that is not accessible to the User; perform copies or translations of the User Manual.

Warranty limitation

The Software is provided "as is", with no guarantee whatsoever from Guillemot Corporation S.A. regarding its use and/or performance. Guillemot Corporation S.A. does not guarantee that the operation of the Software will be free from interruptions or errors. The use or the performance of the Software remain under the Buyer's entire responsibility, and Guillemot Corporation S.A. can provide no guarantee of any kind with regard to the performance and results obtained by the Buyer while using the Software. No guarantee of any kind, whether explicit or implied, is offered by Guillemot Corporation S.A. with regard to the non-violation of third party rights, the merchantability or the adequacy of the Software to a specific use.

In no event shall Guillemot Corporation S.A.'s liability be engaged in the event of damages of any kind arising from the use or the incapacity to use the Software.

Applicable law

The Terms & Conditions of this License Agreement are subject to French Law.

ENVIRONMENTAL CARE RECOMMENDATIONS



At the end of its useful life, this product should not be discarded with standard household refuse but should be given to a collection point for waste from electric and electronic devices, where it shall be recycled.

This is stated by the symbol that appears on the product, the User Manual or the packaging.

According to their specificities, these materials may be recycled. By supporting recycling and other methods of recovering waste from electric and electronic equipment, you help care for the environment.

Please consult with the local authorities, who will refer you to the relevant waste collection point.