

# **eCAFÉ WEBCAM STATION**

# CONTENTS

*Clicking on a title in this table of contents will display the corresponding section*

<b>1. INTRODUCTION</b>	<b>3</b>
<b>2. ADJUSTING SOUND AND VIDEO</b>	<b>4</b>
<b>3. FULL SCREEN DISPLAY</b>	<b>5</b>
<b>4. GOT THE SPIRIT OF A ROCK STAR OR JOURNALIST? THINK OF YOURSELF AS A BIT OF A COMEDIAN? ⇨ RECORD YOUR PERFORMANCE WITH HERCULES ECAFÉ WEBCAM STATION</b>	<b>6</b>
4.1. Taking a single photo	6
4.2. Taking photos in Burst mode	7
4.3. Taking photos in Self-timer mode	8
4.4. Capturing a video sequence	9
4.5. Selecting photo and video capture settings	9
4.6. Selecting, opening or deleting photos or videos	11
<b>5. IF YOU WISH TO TRANSFER YOUR VIDEOS DIRECTLY TO YOUR YOUTUBE ACCOUNT</b>	<b>12</b>
<b>6. WANT TO ADD PHOTOS AND VIDEOS TO YOUR BLOG?</b>	<b>13</b>
<b>7. WANT TO TRANSFER YOUR PHOTOS/VIDEOS TO YOUR IPOD?</b>	<b>17</b>
<b>8. WANT TO TRANSFER YOUR PHOTOS/VIDEOS TO YOUR PSP?</b>	<b>18</b>
<b>9. WANT TO TRANSFER YOUR PHOTOS/VIDEOS TO A FOLDER ON YOUR COMPUTER?</b>	<b>19</b>
<b>10. WANT TO SEND YOUR PHOTOS/VIDEOS BY E-MAIL?</b>	<b>19</b>

# 1. INTRODUCTION


eCAFÉ Webcam Station is a fast and easy tool to capture your photos and videos using your webcam and then show them on a wide choice of media. Thanks to eCAFÉ Webcam Station, you can in a few clicks add the photos to your Blog, broadcast your videos on Youtube or transfer your pictures and videos to your PSP® console or to your iPod®.



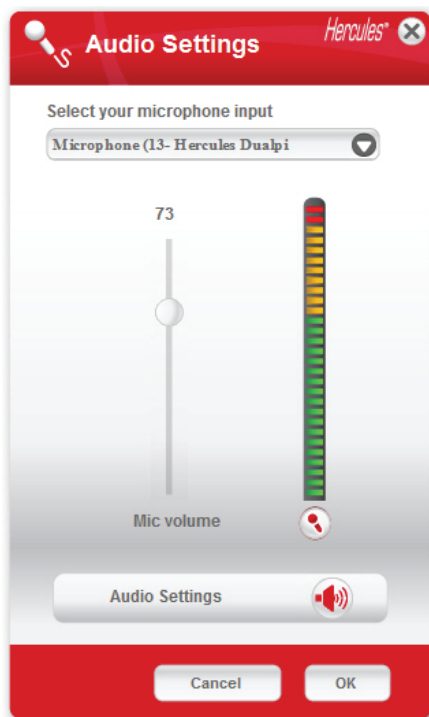
## 2. ADJUSTING SOUND AND VIDEO


### Adjusting your webcam's image in eCAFÉ Webcam Station



- Click the video settings button .
- Test out the different settings (brightness, hue...) to find the image quality that suits you best.
- To return to the default settings, click the Default button.
- Click **OK**.

### Adjusting your webcam's microphone in eCAFÉ Webcam Station



- Click the  button.
- Speak normally into the microphone while at the same time moving the microphone volume level slider until the gauge reaches the yellow zone without going into the red zone.
- You can click **Audio Settings** to open up the microphone's recording properties.
- Once you're done, click **OK**.

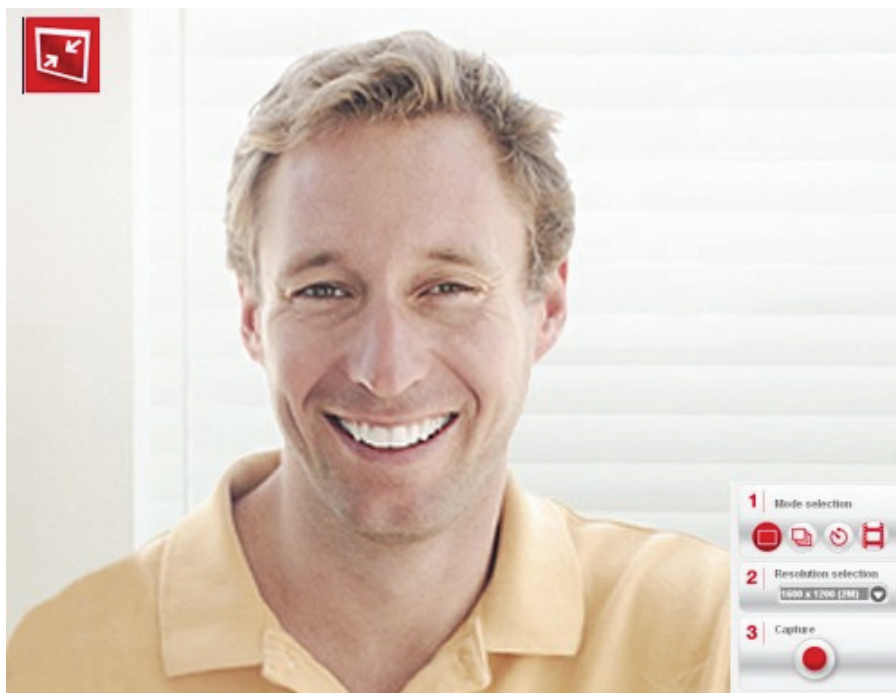
### 3. FULL SCREEN DISPLAY



You can switch the display of the images transmitted by your webcam to full screen mode

by clicking the  button (or by pressing the F11 key on your keyboard).

When you are in full screen mode, you can access Capture mode controls by placing your mouse's pointer in the bottom right-hand corner of your screen (for more information on capture settings, please refer to section 4).



At any time, you can switch to window mode by clicking the  button located in the upper left-hand corner of your screen (or by pressing the F11 key again).


## 4. GOT THE SPIRIT OF A ROCK STAR OR JOURNALIST? THINK OF YOURSELF AS A BIT OF A COMEDIAN? ⇨ RECORD YOUR PERFORMANCE WITH HERCULES ECAFÉ WEBCAM STATION

Perhaps you dream of becoming a singer, choreographer or a journalist. Why not use your eCAFÉ™ Webcam to film yourself and improve your style? Thanks to the **eCAFÉ Webcam Station** software, you can imitate the stars or create your own style by letting your imagination run free. To do so, use your webcam's complete shooting options (photo, burst mode or self-timer and video capture).

### 4.1. Taking a single photo



- Launch eCAFÉ Webcam Station.

**Note:** Xtra Controller also opens in the lower-right part of your screen to let you access zoom functions. If you do not wish to use these functions, you can hide the window by clicking the  button located in the upper right corner.

- In the main window, click the **Capture** button.



A new window opens. Follow the steps as indicated on-screen:

1. Select **Single shot mode**.



2. Select the resolution in the drop-down list.

3. Click the  button.

The image is saved in the location and format (jpeg) selected by default, and the folder containing the images opens up, providing thumbnails of your photos.

**Note:** To modify the default location and saving format, please refer to chapter 4.5. Selecting photo and video capture settings.

## 4.2. Taking photos in Burst mode



- In the main eCAFÉ Webcam Station window, click the **Capture** button.



A new window opens. Follow the steps as indicated on-screen:

1. Select **Burst** mode



2. Select the resolution in the drop-down list.

3. Click the  button.

A **3 second** countdown starts, giving you time to get into your pose. Next, **10 photos** are taken in quick succession, at a rate of **3 images per second** (default settings).

To stop taking shots before the last photo is taken, press

the  button again.

The images are saved in the location and format (jpeg) selected by default, and the folder containing the images opens up, providing thumbnails of your photos.

In this mode, eCAFÉ Webcam Station creates an **animated GIF** in a "GIF" sub-folder, which opens automatically to show you the animation created. Surprise your friends by importing this file to your website or your blog (for more details on this function, please refer to chapter 6.1. Adding photos or videos to your blog).

**Note:** To modify the different photo capture settings in Burst mode, please refer to chapter 4.5. Selecting photo and video capture settings.

### 4.3. Taking photos in Self-timer mode



- In the main eCAFÉ Webcam Station window, click the **Capture** button.



A new window opens. Follow the steps as indicated on-screen:

1. Select **Self-timer** mode.



2. Select the resolution in the drop-down list.

3. Click the  button.

A **3 second** countdown (by default) starts, giving you time to get into your pose before the shot is taken.

The image is saved in the location and format (jpeg) selected by default, and the folder containing the images opens up, providing thumbnails of your photos.

**Note:** To modify the different photo capture settings in Self-timer mode, please refer to chapter 4.5. Selecting photo and video capture settings.



## 4.4. Capturing a video sequence



- Launch eCAFÉ Webcam Station.
- In the main window, click the **Capture** button.



A new window opens. Follow the steps as indicated on-screen:


1. Select **Video capture** mode.



2. Select the resolution in the drop-down list.

*It is now time to get into position and prepare your text or choreography.*


3. Click the  button to start recording.

- To stop recording, click the  button again.

*The video sequence is recorded in .avi format (by default), in the selected location, and the folder containing the videos opens up.*

**Note:** To modify the different video capture settings, please refer to chapter 4.5. Selecting photo and video capture settings.

## 4.5. Selecting photo and video capture settings

 This step only has to be carried out the first time or when you wish to change the default settings (saving location, photo format, capture mode, sound made during capture).

The capture settings can be selected in eCAFÉ Webcam Station.

- Click the  button.

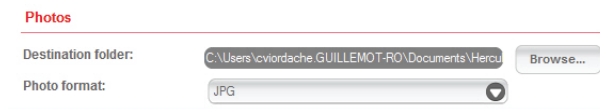
- Select **Capture settings**.

The **Capture settings** window opens up.



Select the webcam you wish to use.

### Selecting the location for saving photo and video captures



- In the **Photos** or **Videos** zone, verify the location for saving your photos or videos.

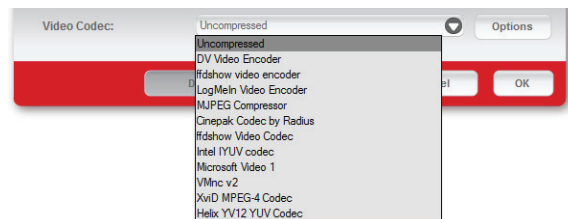
- If you wish to change the location, click **Browse** and select another folder.

### Selecting the format of your photos



- In the **Photos** zone, select the format: bmp or JPG (by default).

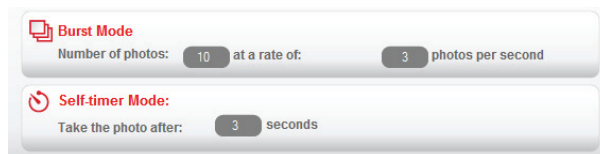
### Selecting the format of your videos



- In the **Videos** zone, select the video encoder.

*The list displayed contains the codecs already installed on your computer. Where the codec permits, you can modify these settings by clicking the **Options** button.*

### Selecting capture mode settings



- In **Burst** mode, set the total number of photos (from 1 to 20) and the number of photos per second (from 1 to 5).

- In **Self-timer** mode, set the delay before the picture is taken: from 0 (immediate capture) to 10 seconds.

### Selecting the sound made during capture

- Tick the **Play a sound when the shot is taken** box and eCAFÉ Webcam Station will make a sound when a photo is taken.

- You can either keep the default sound or click **Browse** to select your own sound (in .wav format).

## 4.6. Selecting, opening or deleting photos or videos

### Selecting photos or videos

- Launch eCAFÉ Webcam Station.
- Click **Capture**.



- Navigate to the **My Pictures** or **My Videos** folder.
- In the thumbnail window, click the item in question to select it, or click the **Select all** button to select all items in the folder.

**Note:** To **select several consecutive items**, hold down the Shift key on your keyboard while clicking each item you wish to include. To **select several non-consecutive items**, hold down the Ctrl key on your keyboard while clicking each item you wish to include.


### Opening photos or videos

- After having selected one or more items in the thumbnail window (see Selecting photos or videos, above), click the **Open** button to view them. eCAFÉ Webcam Station automatically launches your favorite photo or video viewing software (that defined by Windows for this type of file).

### Deleting photos or videos

- After having selected one or more items in the thumbnail window (see Selecting photos or videos, above), click the **Delete** button to delete them.

## 5. IF YOU WISH TO TRANSFER YOUR VIDEOS DIRECTLY TO YOUR YOUTUBE ACCOUNT

 *If you do not own a YouTube account, you must register on the [www.youtube.com](http://www.youtube.com) website to be able to enjoy this feature.*

- Launch eCAFÉ Webcam Station.
- Access the **My videos** folder.



- In the preview window, click on the required item to select it.

- Click on the  button.

*The video is converted and the **YouTube settings** window opens.*

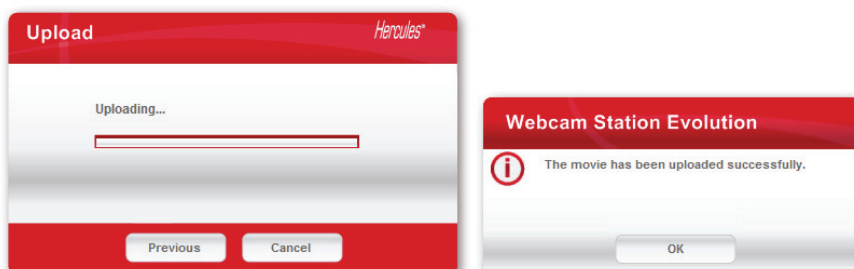
- Click on **Add an account**.
- Enter the login and password for your **YouTube** account.
- Select the icon connected to your **YouTube** account.
- Click on **Send**.

*The **Change video settings** window opens.*



- Fill in the **Title**, **Description** and **Tags** fields, and select any relevant options (Category, Comments, etc.)
- Click on **Next**.

*Your video is then transferred to the YouTube website; a dialog appears to warn you when the file transfer is finished.*



## 6. WANT TO ADD PHOTOS AND VIDEOS TO YOUR BLOG?

Has a friend of yours recently created a blog with photos? Impress him or her by creating a video blog and adding videos to it very easily, thanks to eCAFÉ Webcam Station's conversion function, which automatically converts the video into the appropriate format.

eCAFÉ Webcam Station goes even further by allowing you to post your images directly on your blog, accompanied by the text of your article. And if you have more than one blog with the same host, eCAFÉ Webcam Station can even save your different profiles.

**Note:** eCAFÉ Webcam Station includes settings for the best-known blog hosts in order to facilitate adding elements to your blog. Nevertheless, some hosts may ask you to post your article manually, and not automatically via eCAFÉ Webcam Station.

### ***Adding photos or videos to your blog***

Are there any files in your Pictures or Videos folders? Then you're probably keen to share your masterpieces with your readers and get feedback from them.



- In eCAFÉ Webcam Station, select the photo, video or GIF file you wish to add.

- Click the  button.

- Select the blog in the list.

**⚠ Note:** You can only copy a file to a blog if you have already defined at least one blog in the **My blogs** list. If you haven't yet defined any blogs in the **My blogs** list, eCAFÉ Webcam Station prompts you to do so. This step only has to be carried out the first time or when you wish to modify different settings (saving location, adding, modifying or deleting blogs).

### Add a blog to your list of blogs

- In the **My blogs** window, click the **Add Blog** button.



#### If your blog host is included in the list

- Select your host.
- Give your blog profile a name.
- Enter the login for your blog (your user name) if the corresponding field appears.

**Note:** If the field does not appear, you must identify yourself manually on your blog host's website when uploading your photos or videos.

#### Otherwise...

- Select **Other** in the list of blog hosts.
- Give your blog profile a name.
- Enter the http address of your host.

**Note:** This represents the address leading to the identification page for your blog, generally the site's home page.

- Tick the box corresponding to your type of blog: **Blog** (photos only) or **Vlog** (photos and videos). This will enable eCAFÉ Webcam Station to select the proper format for video conversion: animated GIF (Blog) or MPEG4 (Vlog).

**Note:** We recommend that you keep the **Always ask for my password** box ticked if there is more than one user on the same PC with a blog on the same blog server. This will help you to avoid sending data to the wrong blog or having another person post videos to your blog without your knowledge.

- Click **Save**. Your blog is added to the list.

eCAFÉ Webcam Station prompts you to convert the file into the appropriate format for your blog (from bmp to jpeg for a photo and from .avi to animated GIF if the blog does not accept videos, for example).

### If your blog host allows eCAFÉ Webcam Station to directly post an article on your blog

- Enter your password (if you have ticked the **Always ask for my password** box).
- Enter the title and text of your article in the window that appears.
- When you're done, click the **Send** button.

eCAFÉ Webcam Station starts uploading your article to your blog via the Internet. After a delay of between a few seconds and a few minutes, depending on the speed of your Internet connection as well as the number and size of the files you have selected, the new article and photo or video are added to your blog and eCAFÉ Webcam Station automatically opens up your web browser to allow you to view your article right away.

### Otherwise...

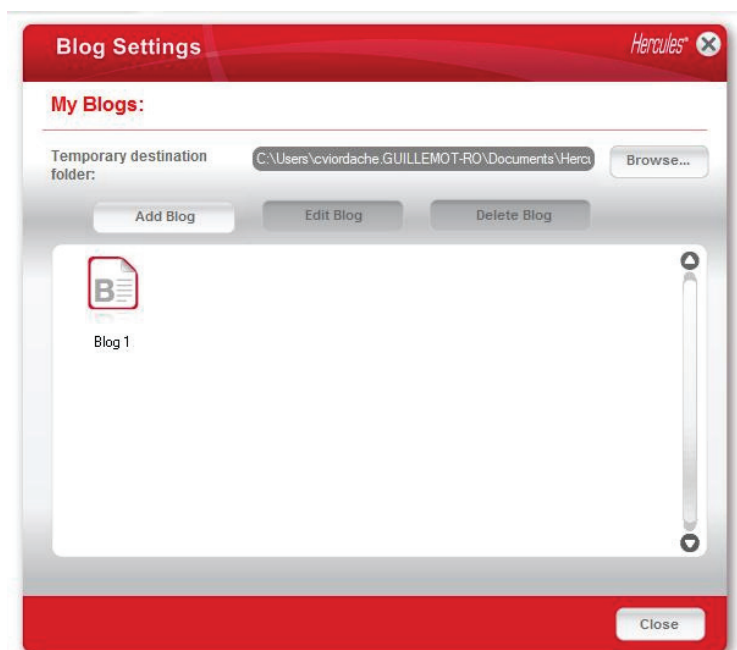
eCAFÉ Webcam Station prompts you to identify yourself on your blog host's home page, then to manually load your photos or videos from the destination folder selected by default, along with your article.

## Editing settings for a blog in eCAFÉ Webcam Station



You can only edit blogs you have already defined in the My blogs list.

- In the **My blogs** window, select a blog.




- Click the **Edit Blog** button.
- If you wish, change the blog host.
- Enter your login for your blog (your username) if the corresponding field appears.

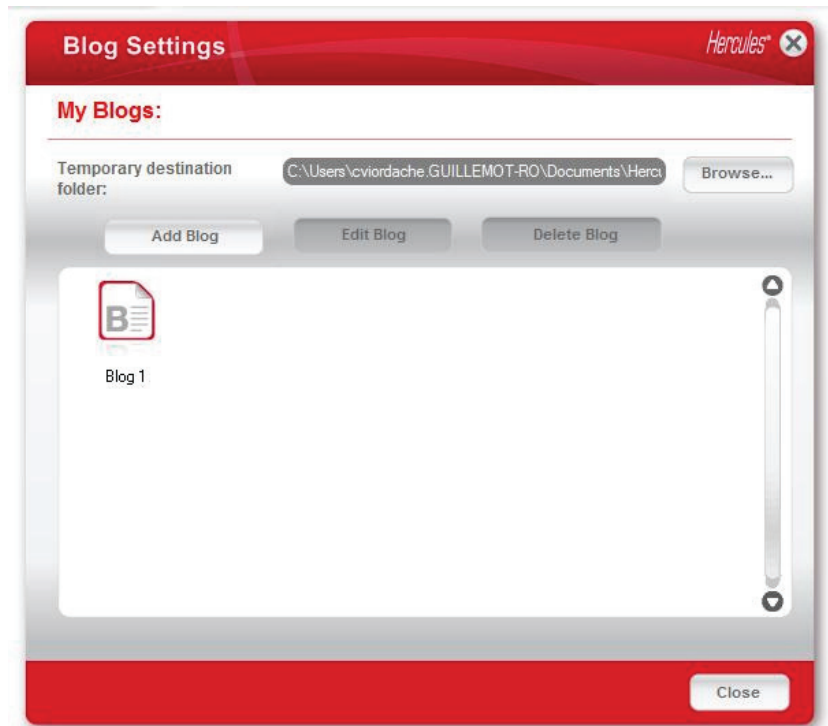
**Note:** We recommend that you keep the **Always ask for my password** box ticked if there is more than one user on the same PC with a blog on the same blog server. This will help you to avoid sending data to the wrong blog or having another person post videos to your blog without your knowledge.

- Click **Save**. Your new settings are now taken into account.

## Deleting a blog from your list of blogs

 You can only delete blogs you have already defined in the My blogs list.

- In the **My blogs** window, select a blog to be deleted.




- Click **Delete Blog**. Your blog has now been deleted from the list.



## 7. WANT TO TRANSFER YOUR PHOTOS/VIDEOS TO YOUR IPOD?

Have a video iPod and want to load it with photos and video clips created with your eCAFÉ™ Webcam? Nothing could be simpler.

 A video iPod and iTunes are required for transferring files.

- Connect your video iPod to your computer.
- In eCAFÉ Webcam Station, select the photo, video or GIF file you wish to transfer in the corresponding folder.

The **Copy to** buttons are enabled.

- Click the  button.

eCAFÉ Webcam Station automatically launches iTunes and prompts you to select the iTunes destination library.

- Select the iTunes library, then click **OK**.

### If your iPod is synchronized with iTunes

*Your iPod's contents are updated automatically.*

### Otherwise...

*eCAFÉ Webcam Station prompts you to select the iPod destination library.*

- Select the iPod library, then click **OK**.

**Notes:** For further details on synchronizing your iPod with iTunes, please refer to the iTunes help utility.

iPod does not allow for the display of animated GIF files. Only the first photo will be displayed.

## 8. WANT TO TRANSFER YOUR PHOTOS/VIDEOS TO YOUR PSP?

Do you use your PSP as a portable video player? Using eCAFÉ Webcam Station, you can very easily transfer your photos and video clips created with eCAFÉ™ Webcam.



Your Memory Stick Duo must contain sufficient storage space for saving the files.

- Connect your PSP to your computer.
- In eCAFÉ Webcam Station, select the photo, video or GIF file you wish to transfer in the corresponding folder.

The **Copy to** buttons are enabled.

- Click the  button.

eCAFÉ Webcam Station detects your PSP and saves the files in the destination folder, after converting them into the appropriate format.

**Note:** For further details on copying files to your PSP, please refer to your PSP's user manual.

## 9. WANT TO TRANSFER YOUR PHOTOS/VIDEOS TO A FOLDER ON YOUR COMPUTER?

- In eCAFÉ Webcam Station, select the photo, video or GIF file you wish to transfer in the corresponding folder.

*The **Copy to** buttons are enabled.*

- Click the  button.

*eCAFÉ Webcam Station opens a folder selection window.*

- Select the folder where you wish to save your files.

## 10. WANT TO SEND YOUR PHOTOS/VIDEOS BY E-MAIL?

- In eCAFÉ Webcam Station, select the photo, video or GIF file you wish to send in the corresponding folder.

*The **Copy to** buttons are enabled.*

- Click the  button.

*eCAFÉ Webcam Station offers you an email application to use.*

### **If you wish to use the application offered**

- Click Yes.

### **If you wish to use another application or if no email application is detected**

- Launch your favorite email application.  
 - Create a new email.  
 - Manually insert your photo/video files into your email.  
 - Enter the message subject and text, then send your email.

## Registered trademarks

Hercules® and eCAFÉ™ are registered trademarks of Guillemot Corporation S.A. Microsoft®, Windows®, Windows Live®, Microsoft® Windows® 7, MSN®, Internet Explorer® and the Windows flag are trademarks or registered trademarks of Microsoft Corporation in the United States and/or in other countries. Wi-Fi is a registered trademark of the Wi-Fi Alliance. All other registered trademarks and brand names are hereby acknowledged and are the property of their respective owners. Illustrations not binding. Contents, designs and specifications are liable to change without prior notice and may vary according to countries.

## Copyright

© 2009 Guillemot Corporation S.A. All rights reserved.

No part of this manual may be copied, summarised, issued, posted, stored in a search engine or translated in any language or computer language, for any purpose or by any means that may be, whether electronic, mechanical, magnetic, manual, by means of photocopies, recordings or others, without the express authorisation in writing of Guillemot Corporation S.A.

## End User License Agreement

**IMPORTANT:** Please read the following End User License Agreement before using the eCAFÉ™ device. The term "Software" refers to all executable programs, managers, libraries, data files and to any documentation relating to the programs, as well as the complete operating system included in the eCAFÉ™ product. The Software is licensed, and not sold, to the User, exclusively for use complying with the terms of this License Agreement. You hereby accept and agree to abide by the Terms & Conditions of this License Agreement. If you disagree with the Terms & Conditions of this License Agreement, please do not use the Software.

The Software is protected by international copyright laws and agreements, as well as other international laws and agreements relating to intellectual property.

The Software (excluding the software sub-applications) remains the property of Guillemot Corporation S.A. All rights reserved. Guillemot Corporation S.A. grants only a limited and non-exclusive right to use the Software.

**Guillemot Corporation S.A. reserves the right to cancel this License Agreement in the event of failure to abide by its Terms & Conditions.**

## License granted

1. The license is granted to the original Buyer alone. Guillemot Corporation S.A. remains the sole owner and holder of the Software (excluding the software sub-applications), and reserves all rights that are not expressly granted by this License Agreement. The User is not allowed to sub-license the rights granted by this License Agreement. The User is allowed to transfer this License, provided that the original Buyer retains no part of the Software and that the Transferee reads and accepts the Terms & Conditions of this License Agreement.
2. The Buyer may only use the software on one computer at a time. The machine-readable part of the Software may be copied to another computer, provided that the Software is deleted from the first computer and that it is impossible to use the Software on several computers at the same time.
3. The Buyer hereby acknowledges and accepts the copyright belonging to Guillemot Corporation S.A. The copyright shall in no event be removed from the Software, nor from any documentation, whether printed or electronic, provided with the Software.
4. The License grants the User the right to perform one (1) copy of the machine-readable part of the Software for archival purposes, provided that the User also copies Software's copyright.
5. Except within the limits expressly allowed by this License Agreement, the Buyer may not agree or allow any third party to agree to: grant a sublicense; provide or divulge the Software to other third parties; allow use of the Software on several computers at a time; perform alterations or copies of any kind; reverse engineer, decompile or modify the Software in any way or attempt to obtain information relating to the Software that is not accessible to the User; perform copies or translations of the User Manual.

## Warranty limitation

The Software is provided "as is", with no guarantee whatsoever from Guillemot Corporation S.A. regarding its use and/or performance. Guillemot Corporation S.A. does not guarantee that the operation of the Software will be free from interruptions or errors. The use or the performance of the Software remain under the Buyer's entire responsibility, and Guillemot Corporation S.A. can provide no guarantee of any kind with regard to the performance and results obtained by the Buyer while using the Software. No guarantee of any kind, whether explicit or implied, is offered by Guillemot Corporation S.A. with regard to the non-violation of third party rights, the merchantability or the adequacy of the Software to a specific use.

In no event shall Guillemot Corporation S.A.'s liability be engaged in the event of damages of any kind arising from the use or the incapacity to use the Software.

## Applicable law

The Terms & Conditions of this License Agreement are subject to French Law.

### ENVIRONMENTAL CARE RECOMMENDATIONS



At the end of its useful life, this product should not be discarded with standard household refuse but should be given to a collection point for waste from electric and electronic devices, where it shall be recycled.

This is stated by the symbol that appears on the product, the User Manual or the packaging.

According to their specificities, these materials may be recycled. By supporting recycling and other methods of recovering waste from electric and electronic equipment, you help care for the environment.

Please consult with the local authorities, who will refer you to the relevant waste collection point.