

CONTENTS

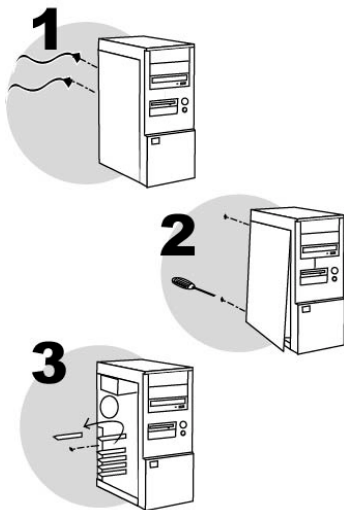
1.	SYSTEM REQUIREMENTS	2
2.	HARDWARE INSTALLATION	2
2.1.	Installing the board.....	2
2.2.	Installing the remote control.....	3
3.	SOFTWARE INSTALLATION	4
3.1.	Driver installation for Windows 98 / Millennium.....	4
3.2.	Driver installation for Windows 2000 / XP.....	5
4.	SATELLITE TELEVISION IS JUST A FEW CLICKS AWAY	7
5.	ADVANCED USE	8
5.1.	Introduction to satellite television.....	8
5.2.	Configuration.....	8
5.2.1.	<i>Understanding the configuration tabs</i>	8
5.2.2.	<i>Single LNB satellite dish, non-motorized</i>	9
5.2.3.	<i>Dual LNB satellite dish or greater, non-motorized</i>	9
5.2.4.	<i>Single LNB satellite dish, motorized</i>	11
5.2.5.	<i>About USALS</i>	12
5.3.	Creating a Favorite List.....	13
5.4.	Switching channels.....	13
5.5.	Accessing scrambled channels.....	14
6.	ADDITIONAL FUNCTIONS	15
6.1.	Recording.....	15
6.1.1.	<i>Basic recording</i>	15
6.1.2.	<i>Programmed recording</i>	15
6.1.3.	<i>Time-shifting</i>	16
6.2.	Channel preview.....	17
6.3.	Teletext.....	17
6.4.	Screenshots.....	17
7.	USING THE REMOTE CONTROL	18
8.	TECHNICAL SUPPORT	19
8.1.	If you need to return a product.....	19
8.2.	Save time by registering your product online!.....	19

1. SYSTEM REQUIREMENTS

- Satellite dish
- 500MHz processor (800MHz processor for MPEG-2 recording)
- PCI slot
- 128MB RAM
- Sound card
- CD-ROM or DVD-ROM drive
- Operating system: Microsoft Windows 98/98 SE, Windows Me, Windows 2000, Windows XP
- USB port for the remote control receiver

2. HARDWARE INSTALLATION

2.1. Installing the board



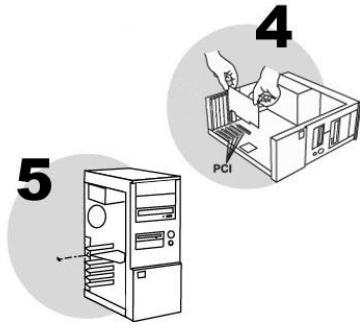
Switch off the PC and any peripherals such as the monitor or printer.

1. Unplug the power supply cable(s).
2. Remove the PC cover (for further information, consult your PC manual).
3. Unscrew the slot cover corresponding to the appropriate PCI slot and remove it.



Static electricity can severely damage electronic components. Before removing the board from its plastic bag, touch the metallic back plate of your PC with your hand to discharge any static electricity from your body.

- Do not touch the printed circuits on the board.
- Do not let anybody else hold the board.
- Do not let your clothes touch any of the components.



4. Insert your Smart TV Satellite into its slot, pushing firmly on the board to make sure it is properly fixed in place.
5. Screw the board bracket into position on your computer chassis.
6. Connect the coaxial cable from your satellite dish to the connector on the board.
7. Replace the PC cover and reconnect the power supply cable(s).

2.2. Installing the remote control



- Open the battery compartment located at the back of the remote control and insert 2 AAA batteries (not included).
- Connect the remote control receiver to an available USB port.
- Using the adhesive provided, attach the receiver in such a way that it is able to capture signals emitted by the remote control.

3. SOFTWARE INSTALLATION

Once your Smart TV Satellite has been installed, switch your PC back on. Because the configuration of the board is Plug and Play, Windows will automatically detect its presence.

Note: your installation screens and procedure may vary slightly from those described in this manual.



Because drivers and software are constantly being developed, the ones provided on your CD-ROM may not be the most recent versions. You can visit the Hercules website (www.hercules.com) to verify this and, if necessary, download the very latest versions.

3.1. Driver installation for Windows 98 / Millennium

Windows displays an **Add New Hardware Wizard** dialog box informing you that the system has found the following device: **PCI Multimedia Video Device**.

- Click on **Cancel** to close this dialog box.

Windows displays an **Add New Hardware Wizard** dialog box informing you that the system has found the following device: **PCI Multimedia Device**.

- Click on **Cancel** to close this dialog box.



Under Windows 98:

Windows displays an **Add New Hardware Wizard** dialog box informing you that the system has found the following device: **USB Human Interface Device**.

- Click on **Next** to install the default drivers.

Note: please have your Windows 98 SE CD-ROM handy before commencing installation. You may be prompted to insert it during driver installation.

- Click on **Finish** to complete the setup.



- Insert the installation CD-ROM into your CD-ROM drive.

The Smart TV Satellite installation menu automatically appears.

If the installation menu is not launched automatically:

- Double-click on **My Computer**.
- Double-click on the CD-ROM icon.
- Double-click on **Setup.exe** if necessary.
- Click on **Install**.
- Follow the on-screen instructions.

Windows prompts you to reboot your computer.

- Click on **Finish**.



If the latest version of DirectX is not installed on your computer:

A warning message appears.

- Click on **OK**.
- Enable the **No, I will restart my computer later** option.
- Click on **Finish**.
- Re-launch the installation menu.
- Click on **DirectX®**.
- Follow the on-screen instructions.

When your computer restarts, Windows carries out installation of the drivers.

3.2. Driver installation for Windows 2000 / XP

Windows displays a Found New Hardware Wizard dialog box.

- Click on **Cancel** to close this dialog box.

A second Found New Hardware Wizard dialog box appears.

- Click on **Cancel** to close this dialog box.



- Insert the installation CD-ROM into your CD-ROM drive.

The Smart TV Satellite installation menu automatically appears.

If the installation menu is not launched automatically:

- Double-click on **My Computer**.
- Double-click on the CD-ROM icon.
- Double-click on **Setup.exe** if necessary.

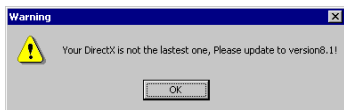
- Click on **Install**.
- Follow the on-screen instructions.

Windows may display a Hardware Installation warning.

- Click on **Yes** (under Windows 2000) or **Continue Anyway** (under Windows XP).

Windows prompts you to reboot your computer.

- Click on **Finish**.



If the latest version of DirectX is not installed on your computer:


A warning message appears.

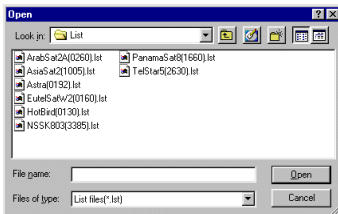
- Click on **OK**.
- Enable the **No, I will restart my computer later** option.
- Click on **Finish**.
- Re-launch the installation menu.
- Click on **DirectX®**.
- Follow the on-screen instructions.

When your computer restarts, Windows carries out installation of the drivers.

4. SATELLITE TELEVISION IS JUST A FEW CLICKS AWAY

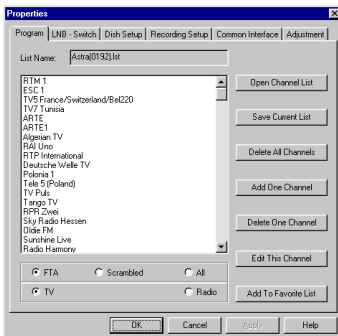
In order to fully enjoy all the advantages of satellite television, you must first complete a configuration process. Want to check out the main unscrambled channels available before doing any setting up? Well, you can! Smart TV Satellite includes a list of preprogrammed channels, accessible as soon as your satellite dish is aimed at the appropriate satellite.

- Launch the Hercules Smart TV Satellite program.
- Click on .
- Click on **Open Channel List**.




A dialog box appears, containing lists of preprogrammed channels classified by satellite.

- Select the list corresponding to the satellite your dish is aimed at.
- Click on **Open**.



The **Program** tab now displays a list of channels.

- Enable the **FTA** option to only display unscrambled channels.
- Enable either the **TV** or **Radio** option to only display the corresponding channels.
- Click on **Add To Favorite List**.
- Click on **Add All** >>.
- Click on **OK**.
- Click on  to display the Favorite List.
- To view a channel, simply double-click on it.

Note: channel lists may not be up to date or may not correspond to the satellites in your country. The Advanced use section describes in detail the steps to take to properly configure your satellite reception.

5. ADVANCED USE

5.1. Introduction to satellite television

Before setting out to configure your satellite reception, you must first have an understanding of the generic operation and main elements of a satellite reception channel.

A satellite in orbit around the Earth broadcasts channels to set geographical zones (meaning zones of coverage). To do this the satellite makes use of a variety of transponders, each of which broadcasts many satellite channels.


A channel is characterized by different elements: the transmitting satellite, the transponder within that satellite, the transmission frequency, the type of polarization (this defines the wave propagation mode and allows two close frequencies to be used for broadcasting channels without the risk of interference, by alternating horizontal and vertical polarization), and the encryption mode (for scrambled channels). On the ground, your satellite dish receives these signals and sends them to its receiving antenna or antennae (known as LNBs, for Low Noise Blocks).

The signal captured by the LNB(s) is then sent on to your computer, which interprets it to reconstitute the video and sound.

The increase in the number of channels has led to an increase in the number of satellites, each of them in a different position. As a result, many fixed satellite dishes have more than one LNB to enable them to receive signals from different satellites. Some satellite dishes are also motorized, allowing them to be aimed at specific satellites.

Nonetheless, it is impossible to receive all channels broadcast around the world as satellites have limited zones of coverage; you will not be able to receive signals from a satellite aimed at Asia, for example, if you live in Europe. The two main satellites broadcasting in Europe are Astra and Hotbird.

5.2. Configuration

- Launch the Hercules Smart TV Satellite program.
- Click on .

The control panel appears.

5.2.1. Understanding the configuration tabs

Configuration of your satellite reception is carried out via the **LNB - Switch** and **Dish Setup** tabs.

The **LNB - Switch** tab contains presets corresponding to your satellite dish's LNBs, or the different LNB positions if you have a motorized satellite dish. Using this tab, you can define the communication protocol employed between the satellite dish and Hercules Smart TV Satellite. It

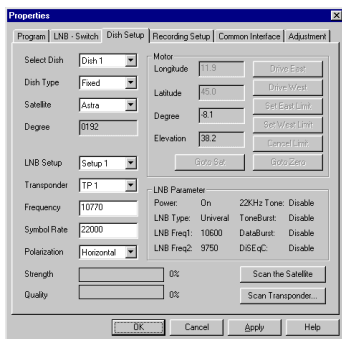
is the communication protocol which allows you to switch from one LNB to another, or redirect the satellite dish when switching between channels broadcast by two different satellites.

Using presets, the **Dish Setup** tab allows you to define which satellite an LNB or satellite dish position corresponds to. As a preset can only correspond to a single satellite, you must therefore define as many presets as there are satellites targeted.

Your satellite reception configuration will vary according to the kind of hardware you have. Please refer to one of the following three sections.

5.2.2. Single LNB satellite dish, non-motorized

- Select the **Dish Setup** tab.
- Select the **Dish 1** preset in the **Select Dish** field.



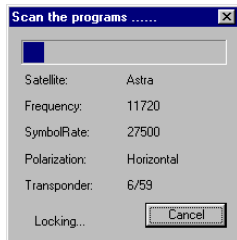
- Select **Fixed** in the **Dish Type** field.
- Select the satellite your dish is aimed at in the **Satellite** field.

*The satellite coordinates in the **Degree** field are updated automatically.*

- Select **Setup 1** in the **LNB Setup** field.
- Click on **Apply**.

*The **Strength** and **Quality** signal indicators are updated.*

- Click on **Scan the Satellite**.



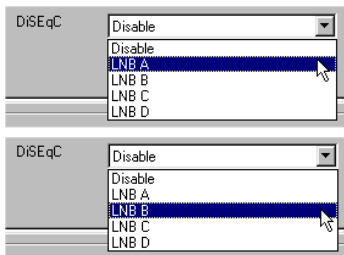
Channel scanning begins. Once it is complete, the software prompts you to save the list of detected channels.

- Give the list a name (the name of the satellite involved, for example) and click on **OK**.

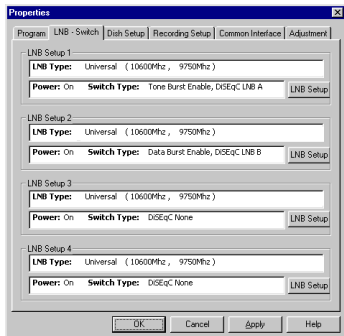
*The control panel now displays the **Program** tab with the list of detected channels.*

5.2.3. Dual LNB satellite dish or greater, non-motorized

You must assign a "path" to each LNB for information transfer. As the **LNB A** path corresponds to the main LNB on your satellite dish, we recommend that you assign it to LNB 1.



- Select the **LNB - Switch** tab.
- Click on **LNB Setup** in the **LNB Setup 1** zone.
- Select **LNB A** in the **DiSEqC** field.
- Click on **OK**.
- Click on **LNB Setup** in the **LNB Setup 2** zone.
- Select **LNB B** in the **DiSEqC** field.
- Click on **OK**.
- Repeat this procedure for any other LNBs.



If your satellite dish is only compatible with Mini-DiSEqC/Tone Burst:

- Click on **LNB Setup** in the **LNB Setup 1** zone.
- Select **Enable** in the **Tone Burst** field.
- Click on **OK**.
- Click on **LNB Setup** in the **LNB Setup 2** zone.
- Select **Enable** in the **Data Burst** field.
- Click on **OK**.

Your configuration should resemble the one in the illustration, opposite.

- Select the **Dish Setup** tab.



- Select the **Dish 1** preset in the **Select Dish** field.
- Select **DiSEqC 1.2** in the **Dish Type** field.
- Select the satellite corresponding to your main LNB or your dish's main position in the **Satellite** field.

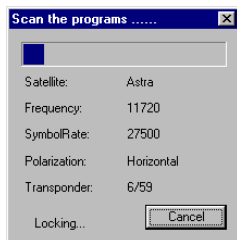
*The satellite coordinates in the **Degree** field are updated automatically.*

- Select **Setup 1** in the **LNB Setup** field.

- Click on **Apply**.

*The **Strength** and **Quality** signal indicators are updated.*

- Click on **Scan the Satellite**.



Channel scanning begins. Once it is complete, the software prompts you to save the list of detected channels.

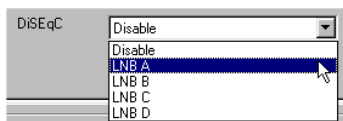
- Give the list a name (the name of the satellite involved, for example) and click on **OK**.

The control panel now displays the **Program** tab with the list of detected channels.

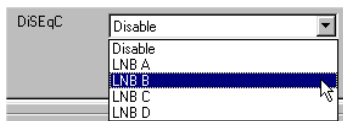
- Repeat this procedure for the other LNBs (select a preset in the **Select Dish** field, select a satellite in the **Satellite** field and select an LNB in the **LNB Setup** field).

5.2.4. Single LNB satellite dish, motorized

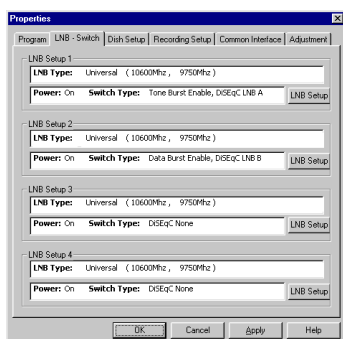
You must assign a "path" to each satellite dish position for information transfer. As the **LNB A** path corresponds to the main position, we recommend that you assign it to LNB 1.



- Select the **LNB - Switch** tab.
- Click on **LNB Setup** in the **LNB Setup 1** zone.
- Select **LNB A** in the **DiSEqC** field.
- Click on **OK**.



- Click on **LNB Setup** in the **LNB Setup 2** zone.
- Select **LNB B** in the **DiSEqC** field.
- Click on **OK**.
- Repeat this procedure for any other dish positions.



If your satellite dish is only compatible with Mini-DiSEqC/Tone Burst:

- Click on **LNB Setup** in the **LNB Setup 1** zone.
- Select **Enable** in the **Tone Burst** field.
- Click on **OK**.
- Click on **LNB Setup** in the **LNB Setup 2** zone.
- Select **Enable** in the **Data Burst** field.
- Click on **OK**.

Your configuration should resemble the one in the illustration, opposite.

- Select the **Dish Setup** tab.

Select Dish	Dish 1
Dish Type	DiSEqC 1.2
Satellite	Astra
Degree	0192
LNB Setup	Setup 1

- Select the **Dish 1** preset in the **Select Dish** field.
- Select **DiSEqC 1.2** in the **Dish Type** field.
- Select the satellite corresponding to your dish's main position in the **Satellite** field.

*The satellite coordinates in the **Degree** field are updated automatically.*

- Select **Setup 1** in the **LNB Setup** field.

- Click on **Apply**.

*The **Strength** and **Quality** signal indicators are updated.*

- Click on **Scan the Satellite**.

Channel scanning begins. Once it is complete, the software prompts you to save the list of detected channels.

- Give the list a name (the name of the satellite involved, for example) and click on **OK**.

*The control panel now displays the **Program** tab with the list of detected channels.*

- Repeat this procedure for the other satellite dish positions (select a preset in the **Select Dish** field, select a satellite in the **Satellite** field and select a position in the **LNB Setup** field).

5.2.5. About USALS

Dish Type	DiSEqC 1.2
Satellite	Fixed DiSEqC 1.2 USALS

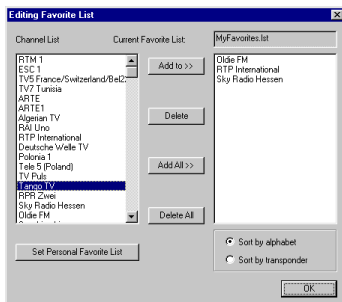
In addition to the DiSEqC 1.2 protocol, the USALS protocol is also available. In fact USALS is not a distinct protocol as such, but rather an improvement on DiSEqC 1.2; it consists of a software utility allowing the satellite dish to be aimed at a specific satellite without any adjustments.

All you need to know are the coordinates of your place of residence (longitude and latitude), and satellite positions will be recalculated with respect to your location by USALS, which can aim the dish at a satellite with precision of one-tenth of one degree. USALS is mainly used in high-end satellite dish motors.

5.3. Creating a Favorite List

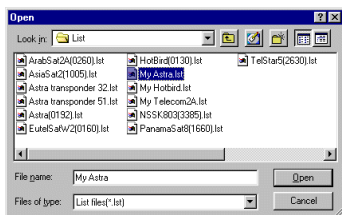
The procedure outlined above has enabled you to detect satellite channels, but with the vast number of channels available, you may well wish to keep only a selection of your favorites, accessible at any time. You can do this by creating a Favorite List.

You must now select the channels to be included. Filters are available to help with your selection: media type (TV or Radio) and channel type (FTA (Free To Air), Scrambled or All).



- Click on **Add To Favorite list**.
- Click on **Set Personal Favorite List**.
- Click on **New....**
- Give your list a name and click on **OK**.
- Next, select the channel that you would like to add to your list and click on **Add to >>**.
- Click on **OK** once your list has been defined.

Your Favorite List is now accessible by clicking on



If you have a satellite dish with more than one LNB, or a motorized dish:

You can add channels broadcast by other satellites to your Favorite List. To do this:

- Click on **Open Channel List**.
- Select one of the lists of channels previously generated.
- Click on **Open**.
- Repeat the procedure described above.

5.4. Switching channels

- Click on to display your Favorite List.
- Double-click on a channel to view it.
- Adjust the volume using the slider (hold down the left mouse button and move the mouse).
- Double-click in the video window to switch to full screen mode.

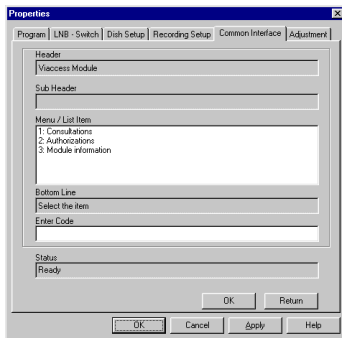
Remark: you can also use the remote control to switch channels and control all of Hercules Smart TV Satellite's functions (please refer to the [Using the remote control](#) section).


5.5. Accessing scrambled channels

Hercules Smart TV Satellite also detects scrambled channels, which are designated in your Favorite List with an asterisk. You can receive these channels by acquiring the appropriate subscription card and CAM (Conditional Access Module), both of which are available from your satellite dish retailer.



Switch off the PC and any peripherals such as the monitor or printer.



- Insert the conditional access module into the designated slot on Smart TV Satellite.
- Insert the subscription card into the conditional access module.
- Switch your computer back on.
- Re-launch the Hercules Smart TV Satellite program and click on .
- Select the **Common Interface** tab.
- Enter the required information and confirm it.



The scrambled channels corresponding to your subscription card are now accessible.

6. ADDITIONAL FUNCTIONS

6.1. Recording

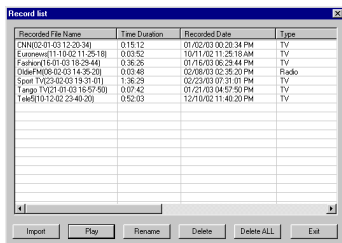
Come across an interesting show while channel surfing that you'd like to keep? Or perhaps you've consulted the TV listings to get the most out of the wealth of satellite broadcasts available and would like to program a recording? You're in luck, since Hercules Smart TV Satellite is equipped with powerful recording functions.

6.1.1. Basic recording


- Click on  to start recording.
- Click on  to stop recording.

A dialog box appears, prompting you to enter a name for the recording.

- Enter a name and click on **OK**.

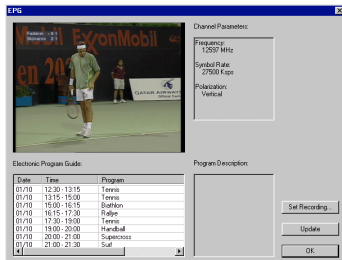


Your list of recordings, a virtual video library, is displayed. Simply double-click on a recording to view it.


Note: the list of recordings is accessible by clicking on .

6.1.2. Programmed recording

Automatic method:



- Select the channel from which you would like to record.

- Click on .

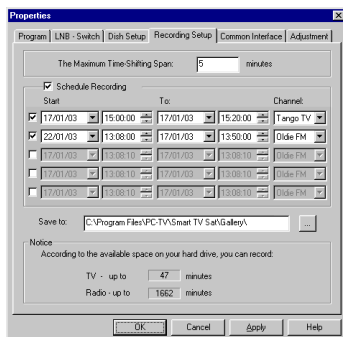
The EPG (Electronic Program Guide) function allows you to obtain satellite channel listings via the signal received by your satellite dish. The software searches automatically for broadcast information.


- Select the show you would like to record and click on **Set Recording....**

- Confirm the recording by clicking on **OK**.

The show is added to the list of recordings in the **Recording Setup** tab of the control panel.

Manual method:



- Click on .
- Select the **Recording Setup** tab.
- Check the **Schedule Recording** box.
- Check the box beside the first recording.
- Set the start and end times, as well as the channel on which the show will be broadcast, as you would with a standard VCR.

Note 1: you can change the recording path for the show in the **Save to** field.

Note 2: make sure that the length of the show to be recorded does not exceed the space available on your hard drive, detailed in the **Notice** field.

- Click on **OK**.

Recording of the show will begin at the time and date you have specified.





In order for the recording to take place, your computer must be switched on and the Hercules Smart TV Satellite software enabled.

6.1.3. Time-shifting

Time-shifting allows you to start recording the channel you are watching with a single click. This option is useful if you are disturbed in the middle of a show by an unforeseen event (a telephone call, etc.), as you can then go back and watch the part that you missed while the recording continues. The files corresponding to the recording are automatically erased once you have watched the remainder of the show, which is not the case with normal recordings. To switch to time-shifting mode:

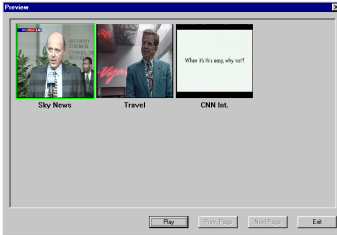
- Click on .


You can now browse through the part that has been recorded (fast forward, rewind, pause) using the navigation bar (.

- Click on  to switch back to normal mode.

Note: you can define the maximum duration for time-shifting via the **Recording Setup** tab in the control panel.


6.2. Channel preview



Click on  for a simultaneous display of different channels in the form of a mosaic. Doing so will provide you with a global overview of the shows currently being broadcast, and you can then display a channel by double-clicking on the related thumbnail.

6.3. Teletext

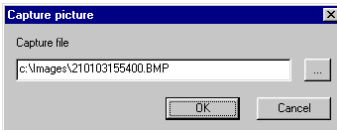



- Click on .

The teletext pages for the channel you are watching are displayed in a new window. To navigate between different pages, click on their numbers.

6.4. Screenshots

You can capture a screenshot in .bmp format at any time. To do this:



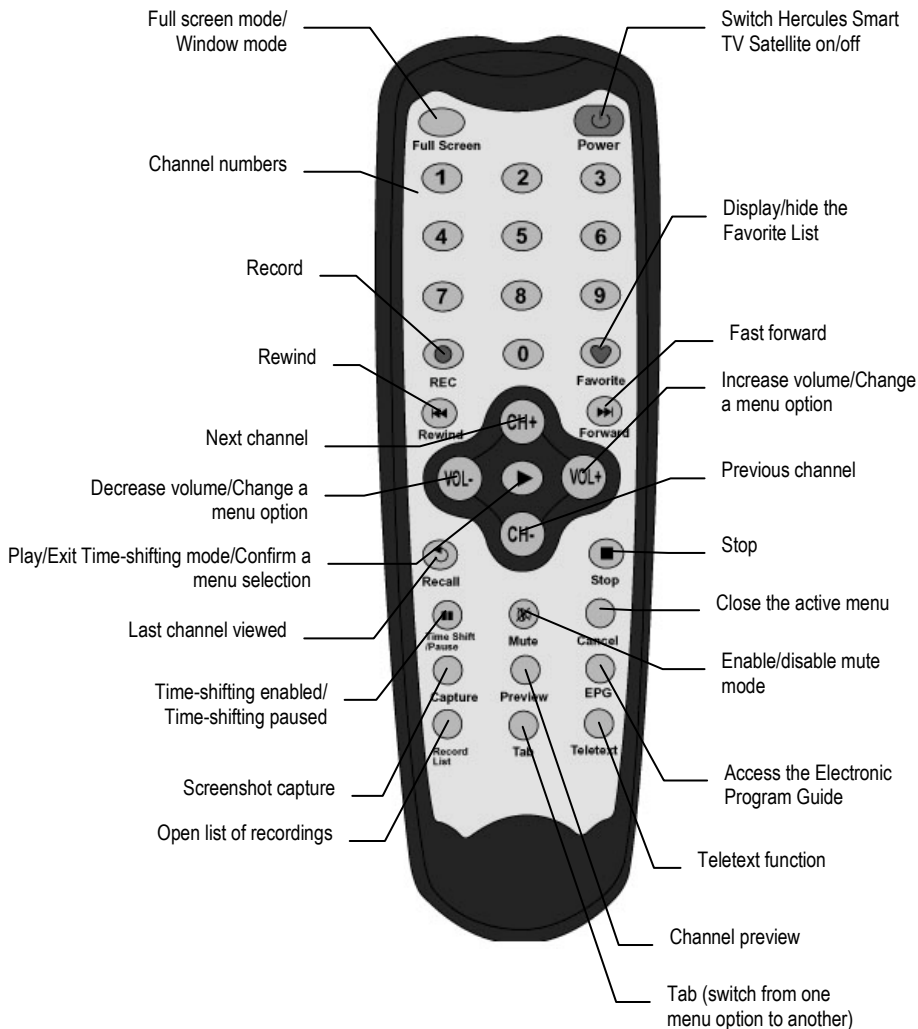
- Click on .

The screenshot is saved in the following directory by default: C:\images.

- If necessary, define the directory where the screenshot will be saved by clicking on

7. USING THE REMOTE CONTROL

Smart TV Satellite comes with a remote control, allowing you to access the software's essential functions, described below.



8. TECHNICAL SUPPORT

Log onto our website (www.hercules.com) and check out the **Support/Drivers** section. From there you will be able to access various elements (Frequently Asked Questions (FAQ), the latest versions of drivers and software) that may help to resolve your problem.

If the problem persists you may also contact us by email via the website, taking care to provide the name of the product for which you require assistance, as well as a description of the problem and details regarding your configuration (motherboard, processor, operating system).

8.1. If you need to return a product

Hercules offers a standard 2 year parts & service warranty.

- **In the United Kingdom:** before taking any action, please contact our Technical Support Dept. on **020 7216 0047** or by email at **hercules.uk@guillemotsupport.com** who will be able to advise you as to the best possible solution.
- **In Continental Europe, Australia and New Zealand:** after receiving confirmation from our technical support service that your product is defective, please follow the instructions we provide to have your product replaced.
- **In the USA and Canada:** refund policies apply to products purchased directly from Hercules (30 days).

When returning the product, be sure to include all materials, such as the manual(s), connection cable(s), installation CD(s) and the product packaging box. **Note: only packages that have been assigned an RMA (Return Merchandise Authorization) number by a technical support agent will be accepted.**

8.2. Save time by registering your product online!

Insert the installation CD-ROM into your CD-ROM drive and click on **Register**. Registering with us in this way will simplify the process if you ever need to contact our technical support team. If you wish, you can also be added to our priority mailing list to receive information about our new Hercules products and our latest special offers.

Trademarks

Hercules® is a registered trademark of Guillemot Corporation S.A. Microsoft® Windows® 98, Millennium, 2000, XP and DirectX® are either trademarks or registered trademarks of Microsoft Corporation in the United States and/or other countries. DiSEqC™ is a trademark of Eutelsat. USALS® is a registered trademark of STAB S.r.l. All other trademarks and brand names are hereby acknowledged and are property of their respective owners. Illustrations not binding. Contents, designs and specifications are subject to change without notice and may vary from one country to another.

Declaration of conformity

EC COMPLIANCE NOTICE: this equipment has been tested and found to comply with the limits of the Council Directive 89/336/EEC of 3 May 1989 on the approximation of the laws of the Member States relating to electromagnetic compatibility, amended by Directive 93/68/EEC. In a domestic environment this product may cause radio interference in which case the user may be required to take adequate measures.

CANADIAN COMPLIANCE NOTICE: this Class B digital apparatus meets all requirements of the Canadian Interference-Causing Equipment Regulations.

USA COMPLIANCE NOTICE: this equipment has been tested and found to comply with the limits for a Class B digital device, pursuant to Part 15 of the FCC rules. Operation is subject to the following two conditions:

- (1) This device may not cause harmful interference, and
- (2) This device must accept any interference received, including interference that may cause undesired operation.

These limits are designed to provide reasonable protection against harmful interference in a residential installation. This equipment generates, uses and can radiate radio frequency energy and, if not installed and used in accordance with the instructions, may cause harmful interference to radio communications. However, there is no guarantee that interference will not occur in a particular installation. If this equipment does cause harmful interference to radio or television reception, which can be determined by turning the equipment on and off, the user is encouraged to try to correct the interference by one or more of the following measures:

- Reorient or relocate the receiving antenna.
- Increase the separation between the equipment and receiver.
- Connect the equipment into an outlet on a circuit different from that to which the receiver is connected.
- Consult the dealer or an experienced radio/TV technician for help.

Copyright

© Guillemot Corporation S.A. 2002. All rights reserved.

This publication may not be reproduced in whole or in part, summarized, transmitted, transcribed, stored in a retrieval system, or translated into any language or computer language, in any form or by any means, electronic, mechanical, magnetic, photocopying, recording, manual or otherwise, without the prior written permission of Guillemot Corporation S.A.

Disclaimer

Guillemot Corporation S.A. reserves the right to make changes to specifications at any time and without notice. The information provided by this document is believed to be accurate and reliable. However, no responsibility is assumed by Guillemot Corporation S.A. either for its use or for the infringement of patents or other rights of third parties resulting from its use. This product may exist in a light or special version for PC integration or other purposes. Certain functions detailed in this manual may not be available in these versions. Wherever possible, a **README.TXT** will be included on the installation CD-ROM detailing the differences between the supplied product and the product described in the present documentation.

End-user software license Agreement

IMPORTANT: please read the Agreement carefully prior to opening and installing the Software. By opening the Software package, you agree to be bound by the terms of this Agreement. The Software enclosed in this package is licensed, not sold, and is only available under the terms of the present license Agreement. If you do not agree with the terms hereafter, you must promptly return the Software within 15 days, together with the entire contents of the box, to the place of purchase.

The Guillemot Corporation S.A. Software (hereafter named the "Software") is copyrighted by Guillemot Corporation S.A. All rights are reserved. The term "Software" refers to all documentation and related material, including drivers, executable programs, libraries and data files. The purchaser is granted a license to use the Software only. The licensee also agrees to be bound by the terms and conditions of the present Agreement concerning copyright and all other proprietary rights for any third party Software, documentation and related material included in the Software package.

Guillemot Corporation S.A. reserves the right to terminate this license in the event of failure to comply with any of the terms or conditions laid out in the present Agreement. On termination, all copies of the Software shall immediately be returned to Guillemot Corporation S.A.; the purchaser remaining liable for any and all resulting damages.

License:

1. The license is granted to the original purchaser only. Guillemot Corporation S.A. retains all title to and ownership of the Software and reserves all rights not expressly granted. The licensee is not permitted to sub-license or lease any of the rights that are hereby granted. Transfer of the license is permitted, provided that the transferor does not retain any part or copy of the Software and the transferee accepts to be bound by the terms and conditions of the present Agreement.
2. The licensee may only use the Software on a single computer at any time. The machine-readable portion of the Software may be transferred to another computer provided it is previously erased from the first machine and there is no possibility that the Software can be used on more than one machine at any one time.
3. The licensee acknowledges the copyright protection belonging to Guillemot Corporation S.A. The copyright notice must not be removed from the Software, nor from any copy thereof, nor from any documentation, written or electronic, accompanying the Software.
4. The licensee is granted the right to make one back-up copy of the machine-readable portion of the Software on the condition that all copyright and proprietary notices are also reproduced.
5. Except where the present Agreement expressly permits, the licensee is strictly prohibited from engaging in, nor may he permit third parties to engage in, the following: providing or disclosing the Software to third parties; providing use of the Software in a network, multiple PCs, multi-user or time-sharing arrangement where the users are not individual licensees; making alterations or copies of any kind of the Software; making any attempt to disassemble, de-compile or reverse engineer the Software in any way or form, or engaging in any activity aimed at obtaining underlying information not visible to the user during normal use of the Software; making copies or translations of the User Manual.

Warranty

Smart TV Satellite comes with a standard 2 year parts and service warranty from the date of purchase. Guillemot Corporation S.A.'s entire liability and your exclusive remedy is limited to the replacement of defective products. In no event shall Guillemot Corporation S.A. be liable to you or to any third party for direct or indirect consequential, incidental or special damages which you may incur as a result of using the aforementioned products and/or Software subject to the End-user software license Agreement contained in this document, including, but not limited to, loss of data, or information of any kind.