

Configuring Traktor Pro/Duo 2 for the DJ Console (Windows version)

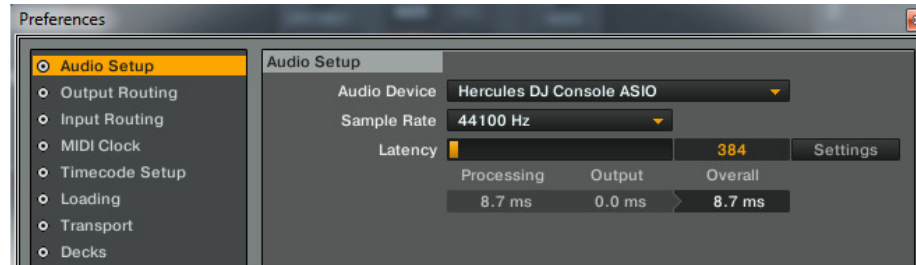
1- Configuration of the Console

- a) From the **DJ Console control panel**, set the audio mode to **DJ**
- b) Check the box **Enable ASIO Mode**
- c) For **MIDI Input**, select **DJ Console buttons**. This is very important to allow Traktor to use the DJ Console as a controller.

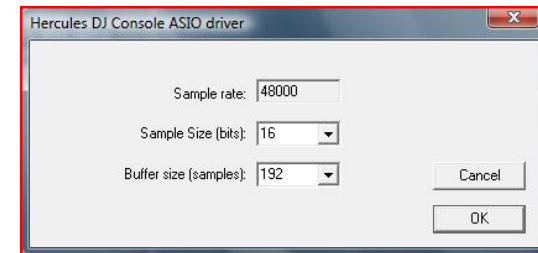


2- Audio configuration in Traktor

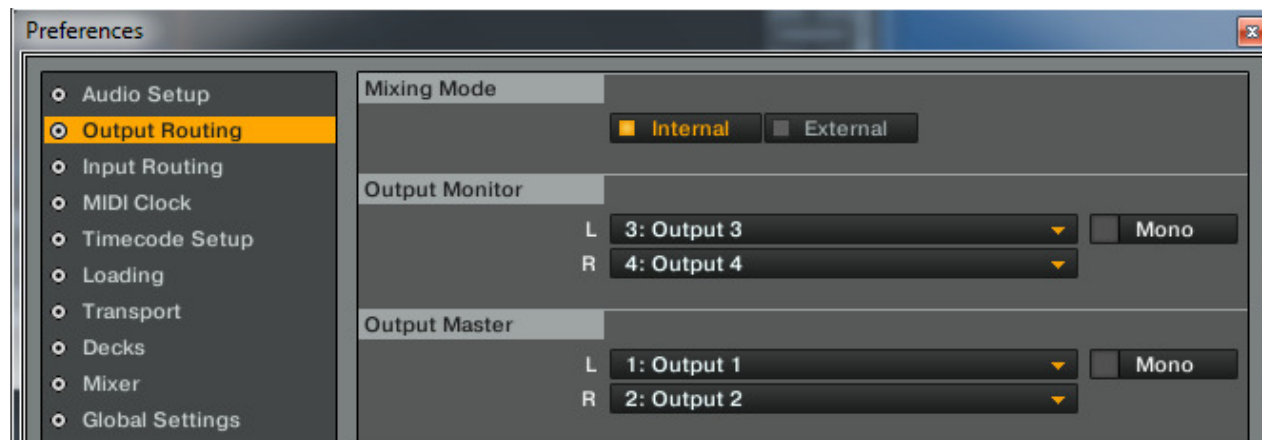
a) From the **FILE** menu, select **Audio Setup**. Choose **Hercules DJ Console ASIO** as **Audio Device**.



b) Click on **Settings** if you wish to modify the various settings of the ASIO driver.



c) in **Output Routing**, set Output 3 & 4 for **Monitor** and Output 1 & 2 for **Master**

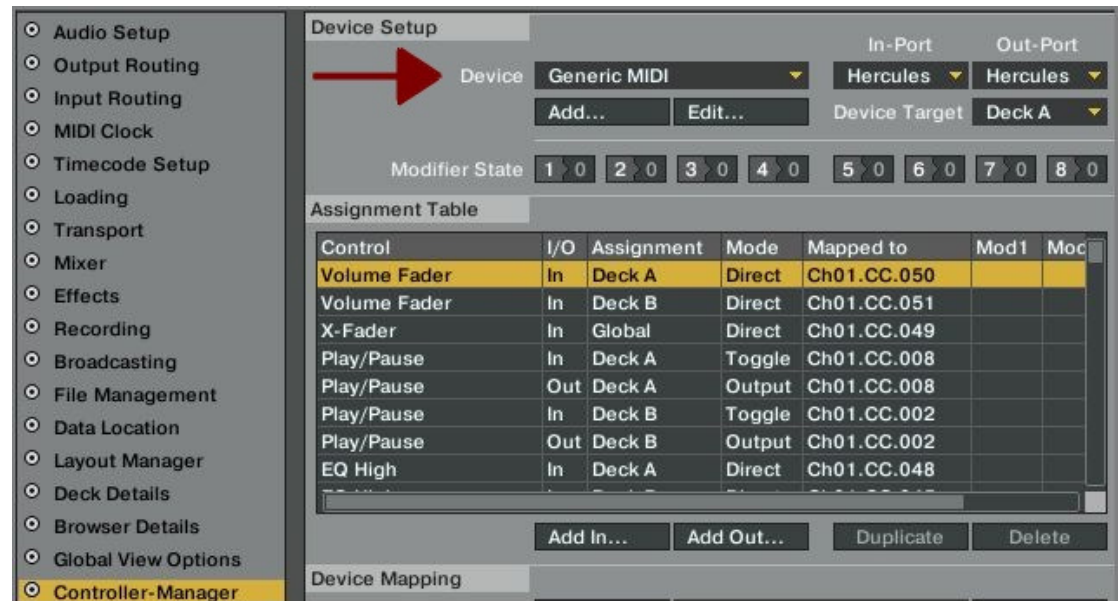


3- Configuration of the Midi controllers in Traktor Pro/Duo 2 (Version 2.01)

a. At the bottom of the configuration menu, click the **Import** button to locate and select the **.TSI** configuration file.



b. **Controller Mapping, MIDI Device Setup** and **Effects Settings** should be selected before clicking OK



c. In **Controller-Manager**:

- For Device, select **Generic MIDI-DJ Console**

- Do the same for **In-Port**

NOTE: Since there is no MIDI OUT port available, the LEDs of the DJ Console cannot be used by Traktor.

This menu also give you access to the various MIDI settings, should you wish to modify them.



MIDI Layout for the DJ Console and Traktor Pro/Duo

NOTE: The terms used are those employed in Traktor

Main Configuration:

- A- EQ (Bass/ Mid/ Treble)
- B- Deck Tempo
- C- **Secondary Functions (See below)**
- D- Loop Size + Set
- E- Deck Monitor Cue
- F- Deck Volume
- G- Deck Time Stretch ON
- H- Browser List Select Up/Down
- I- Deck Pitch Bend
- J- Deck Load Selected
- K- Seek Position (Fine)
- L- Deck Seek Position
- M- Deck Tempo - Sync
- N- Deck Cue/Pause
- O- Deck Play/Pause
- P- X-Fader



Secondary functions:

- Press button **1** to enable the deck's effect unit.

- Press and hold the button **2** to control:

- a) The deck's gain using the **Pitch** Knobs
- b) Monitor mix (Left Jog Wheel)
- c) Monitor Volume (Right Jog Wheel)



- Press and hold the button **3** to enable the Scratch function on the jog wheel.



Midi controllers map

