



DJCONTROL INSTINCT P8

Quick Start Guide
 Guide de démarrage rapide
 Schnellstartanleitung
 Beknopte handleiding
 Guida rapida
 Guía rápida

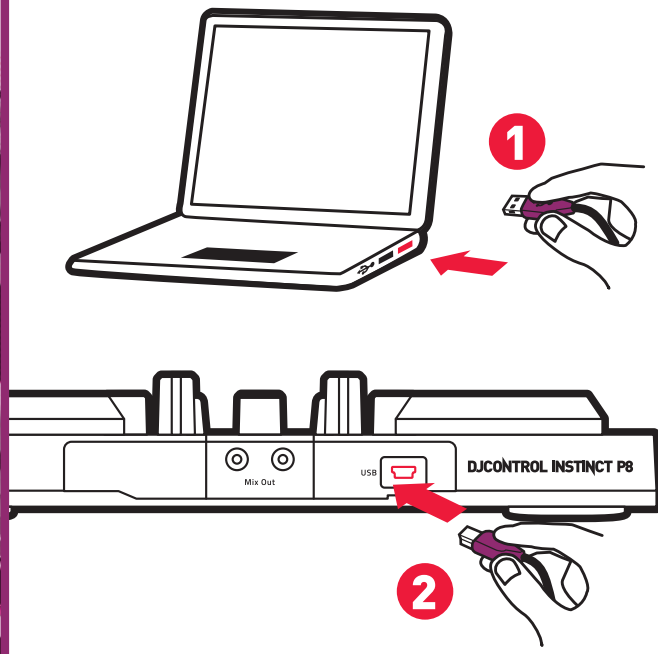


BEFORE USING YOUR DJCONTROL INSTINCT P8



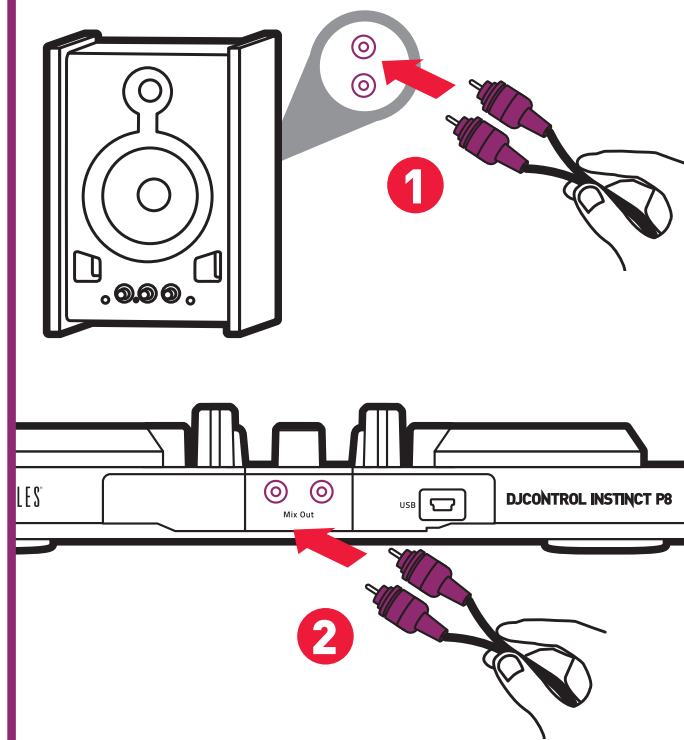
FR Avant d'utiliser votre DJControl Instinct P8
 DE Bevor Sie Ihre DJControl Instinct P8 in Betrieb nehmen
 NL Voordat u uw DJControl Instinct P8 in gebruik neemt
 IT Prima di utilizzare la tua DJControl Instinct P8
 ES Antes de usar tu DJControl Instinct P8

1 Connect DJControl Instinct P8 to your computer.



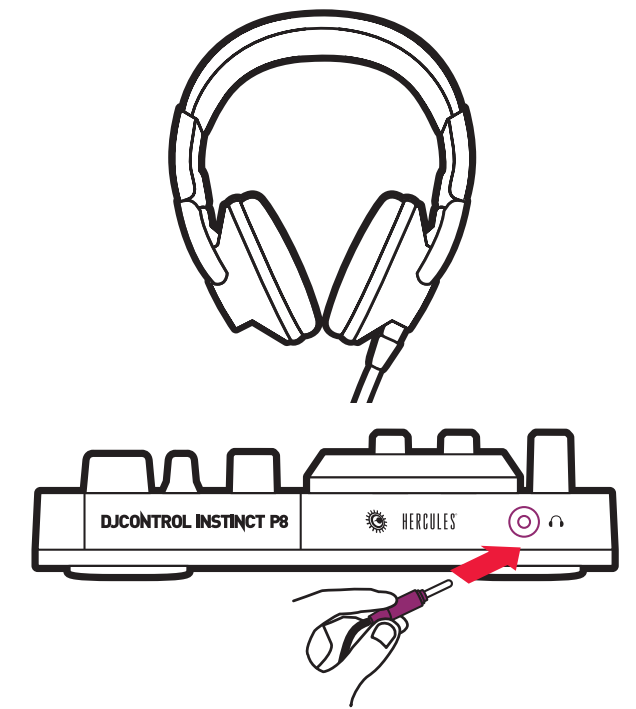
FR Branchez votre DJControl Instinct P8 à votre ordinateur.
 DE Schließen Sie die DJControl Instinct P8 an Ihren Computer an.
 NL Sluit de DJControl Instinct P8 aan op uw computer.
 IT Collega DJControl Instinct P8 al tuo computer.
 ES Conecta DJControl Instinct P8 a tu ordenador.

2 Connect your speakers.



FR Branchez vos enceintes.
 DE Schließen Sie Ihre Lautsprecher an.
 NL Sluit uw speakers aan.
 IT Collega i tuoi altoparlanti.
 ES Conecta tus altavoces.

3 Connect your headphones.



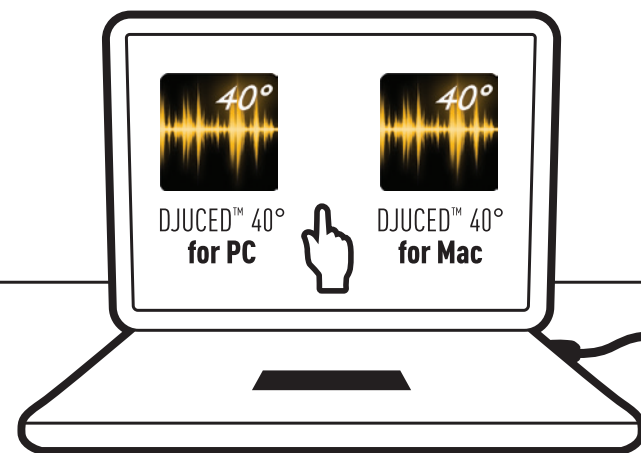
FR Branchez votre casque.
 DE Schließen Sie Ihren Kopfhörer an.
 NL Sluit uw koptelefoon aan.
 IT Collega le tue cuffie.
 ES Conecta tus auriculares.

4 Go to <https://support.hercules.com/djcontrolinstinctp8>

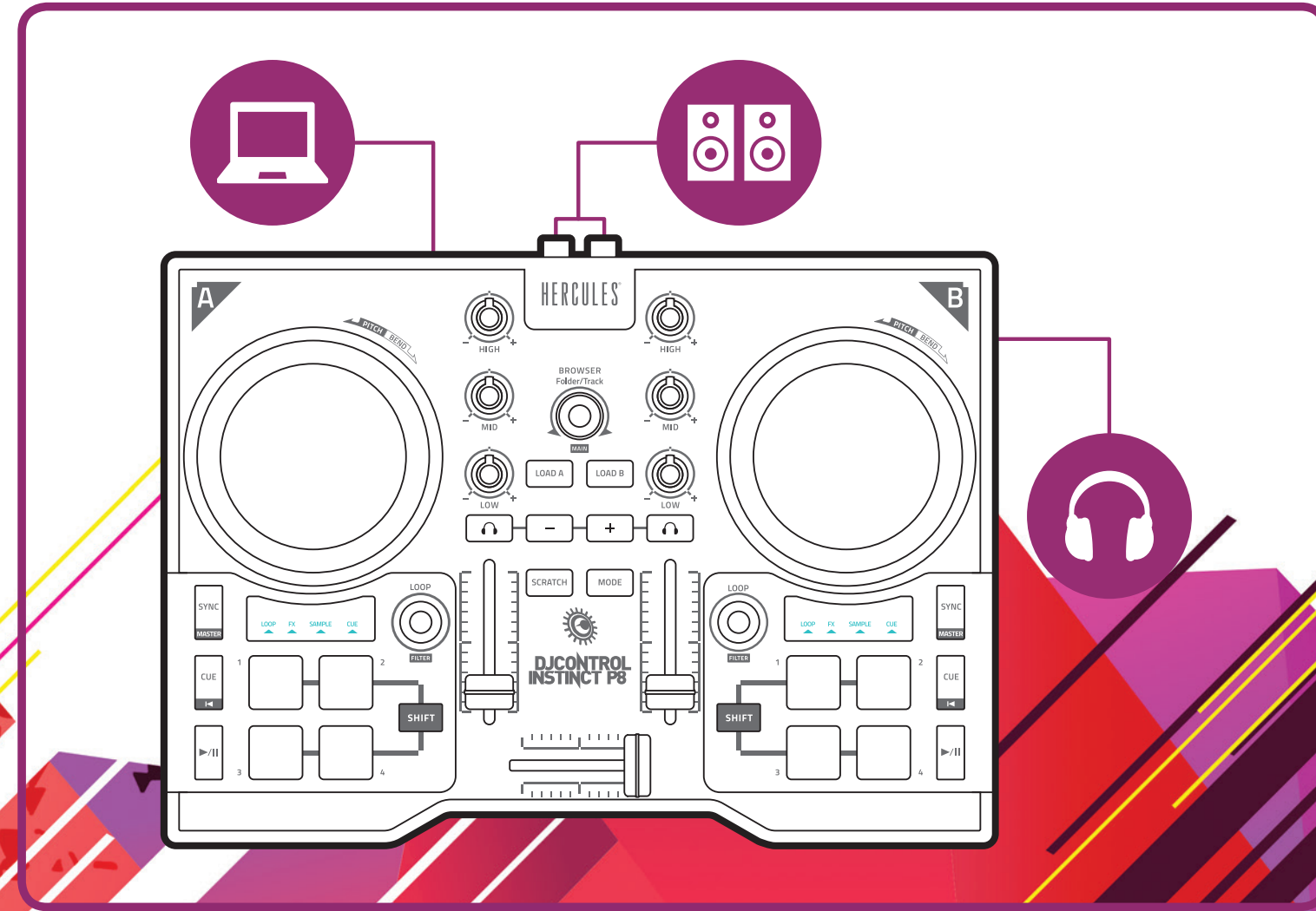


FR Allez sur <https://support.hercules.com/djcontrolinstinctp8>
 DE Gehen Sie auf <https://support.hercules.com/djcontrolinstinctp8>
 NL Ga naar <https://support.hercules.com/djcontrolinstinctp8>
 ES Visita <https://support.hercules.com/djcontrolinstinctp8>

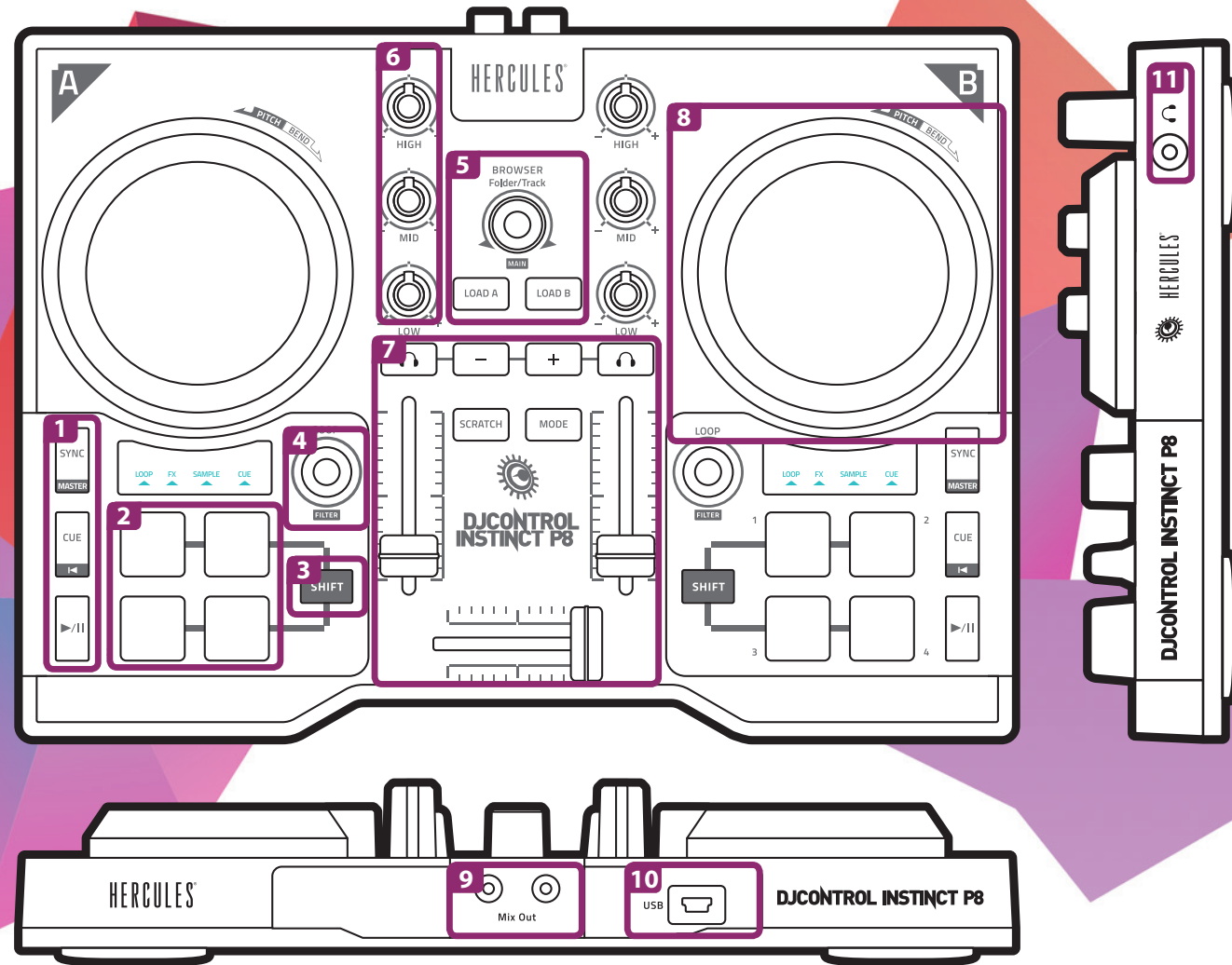
5 Download and install DJUCED™ 40°.



FR Téléchargez et installez DJUCED™ 40°.
 DE Laden Sie sich DJUCED™ 40° herunter und installieren das Programm.
 NL Download en installeer DJUCED™ 40°.
 IT Scarica e installa DJUCED™ 40°.
 ES Descarga e instala DJUCED™ 40°.



DJCONTROL INSTINCT P8



EN

1. Transport buttons: SYNC, CUE, play/pause
2. Performance pads
3. Transport button: SHIFT
4. Adjust loops/filter/effects amount
5. Browse within the library, load tracks, adjust master volume
6. 3-band equalization
7. Mixer: headphones volume, monitoring, volume faders, crossfader, SCRATCH, MODE
8. Deck: Scratch, Pitch bend, Pitch Reset
9. Speakers output (1-2)
10. Bus-powered USB port
11. Headphones output (3-4)

FR

1. Boutons de transport : synchronisation, point Cue, lecture/pause
2. Pads de performance
3. Bouton de transport : SHIFT
4. Réglage des boucles/FILTER/quantité d'effet
5. Navigation dans la bibliothèque, chargement des morceaux, réglage du volume principal
6. Egalisation 3 bandes
7. Mixeur : Volume casque, pré-écoute, faders de volume, crossfader, SCRATCH, MODE
8. Platine : Scratch, Pitch bend, Pitch Reset
9. Sortie mix enceintes (1-2)
10. Port d'alimentation USB
11. Sortie casque (3-4)

DE

1. Transport-Buttons: SYNC, CUE, Play/Pause
2. Performance-Pads
3. Transport-Buttons: SHIFT
4. Einstellen von Loops-/Filter-/Menge
5. Durch Bibliothek blättern, Tracks laden, Einstellung der Master-Lautstärke
6. 3-Band-Equalization
7. Mixer: Kopfhörerlautstärke, Monitoring, Lautstärkeregler, Crossfader, SCRATCH, MODE
8. Deck: Scratch, Pitch bend, Pitch Reset
9. Lautsprecher Ausgang (1-2)
10. Stromversorgter USB-Port
11. Kopfhörer-Ausgang (3-4)

NL

1. Transportknoppen: SYNC, CUE, afspelen/pauzeren
2. Pads voor optreden
3. Transportknop: SHIFT
4. Intensiteit van lussen/filters/effecten instellen
5. Bladeren in bibliotheek, tracks laden, master-volume aanpassen
6. 3-bands equalizer
7. Mengpaneel: koptelefoonvolume, vooraf beluisteren, volumefaders, crossfader, SCRATCH, MODE
8. Deck: Scratch, Pitch bend, Pitch Reset
9. Speakeruitgang (1-2)
10. USB-poort die voedingsstroom levert
11. Koptelefoonuitgang (3-4)

IT

1. Pulsanti trasporto: SYNC, CUE, play/pausa
2. Pad performance
3. Pulsante trasporto: SHIFT
4. Regolazione loop/filtro/quantità effetti
5. Navigazione nella libreria, caricamento tracce, regolazione volume principale
6. Equalizzatore a 3 bande
7. Mixer: volume cuffie, monitoraggio, fader volume, crossfader, SCRATCH, MODE
8. Banco: Scratch, Pitch bend, Pitch Reset
9. Uscita altoparlanti (1-2)
10. Porta USB alimentata tramite bus
11. Uscita cuffie (3-4)

ES

1. Botones de transporte: SYNC, CUE, reproducir/pausa
2. Pads de producción
3. Botón de transporte: SHIFT
4. Ajustar bucles/filtro/cantidad de efectos
5. Desplazarse por la biblioteca, cargar pistas, ajustar volumen principal
6. Ecuilización de 3 bandas
7. Mezclador: volumen de auriculares, escucha previa, faders de volumen, crossfader, SCRATCH, MODE
8. Deck: Scratch, Pitch bend, Pitch Reset
9. Salida de altavoces (1-2)
10. Puerto USB alimentado por el bus
11. Salida de auriculares (3-4)

EN

1. Mixer
2. Effects rack
3. Sampler Deck C/D
4. Track Deck A/B
5. Browser

FR

1. Mixeur
2. Zone d'effets
3. Sampler Platine C/D
4. Piste Platine A/B
5. Navigateur

DE

1. Mixer
2. Effekte Rack
3. Sampler Deck C/D
4. Track Deck A/B
5. Browser

NL

1. Mengpaneel
2. Effecten-rack
3. Sampler Deck C/D
4. Track Deck A/B
5. Browser

IT

1. Mixer
2. Rack effetti
3. Campionatore Banco C/D
4. Traccia Banco A/B
5. Browser

ES

1. Mezclador
2. Organizador de efectos
3. Sampler Deck C/D
4. Pista Deck A/B
5. Explorador



EN - Full user manual available at — FR - Manuel de l'utilisateur complet disponible sur —
 DE - Das vollständige Benutzerhandbuch steht hier zur Verfügung — NL - De volledige handleiding is beschikbaar op —
 IT - Manuale d'uso completo disponibile su — ES - Completo manual del usuario disponible en
<https://support.hercules.com/djcontrolinstinctP8>

