

CONTENTS

1. INTRODUCTION	2
1.1. Technical specifications	2
1.2. Minimum system requirements	2
1.3. Box contents	2
2. SOFTWARE INSTALLATION	3
2.1. Installing Gamesurround Muse XL Pocket LT3	3
3. SOUND CARD OVERVIEW	5
4. SOUND CARD CONFIGURATION	5
4.1. The Gamesurround Muse XL Pocket LT3 control panel	5
5. TECHNICAL SUPPORT	7
6. WARRANTY	7
7. ENVIRONMENTAL PROTECTION RECOMMENDATION	7

ENGLISH

Français

DEUTSCH

NEDERLANDS

ITALIANO

ESPAÑOL

PORTUGUÊS

РУССКИЙ

1. INTRODUCTION

1.1. Technical specifications

USB bus	USB 1.1 or USB 2.0
Audio compatibility	Xear3D® technology for 3D positional audio, compatible with Microsoft® DirectSound®, DirectMusic®, EAX® 1.0, EAX® 2.0
Connectors and cables	<ul style="list-style-type: none">▪ USB cable for connecting the sound card to your PC▪ Stereo minijack connectors:<ul style="list-style-type: none">- 3 output connectors for up to 5.1-channel speaker system connection,- 1 headphone output,- 2 inputs: Line In and microphone.

1.2. Minimum system requirements

- Intel Pentium III or AMD Athlon 500MHz and higher or compatible
- USB port (USB 1.1 or USB 2.0)
- 128MB RAM
- 10MB free hard drive space
- CD-ROM or DVD-ROM drive
- Operating system: Microsoft Windows® XP SP2 / Vista / 7
- Amplified speakers or stereo headphones

1.3. Box contents

- Gamesurround Muse XL Pocket LT3 external sound card
- Mono headset
- Installation CD-ROM including:
 - Microsoft Windows® XP SP2 / Vista drivers
- User Manual

2. SOFTWARE INSTALLATION

Note: your installation screens and procedure may vary slightly from those described in this manual.




Because drivers and software are constantly being developed, the ones provided on the installation CD-ROM may not be the most recent versions. You can visit the Hercules website (www.hercules.com) to verify this and, if necessary, download the very latest versions.

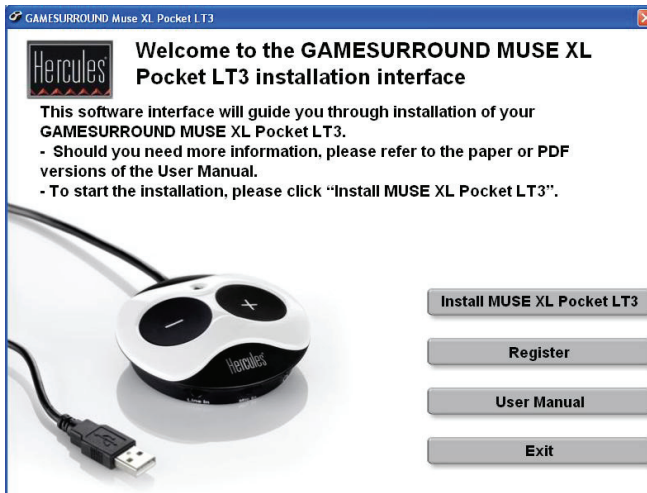
2.1. Installing Gamesurround Muse XL Pocket LT3


- Connect Gamesurround Muse XL Pocket LT3 to one of your computer's USB ports.
- Insert the installation CD-ROM in your CD-ROM or DVD-ROM drive.

The installation menu automatically appears, displaying all of the available options.


If the installation menu is not launched automatically:

- Double-click **My Computer** or **Computer**.
- Double-click the CD-ROM or DVD-ROM drive icon .



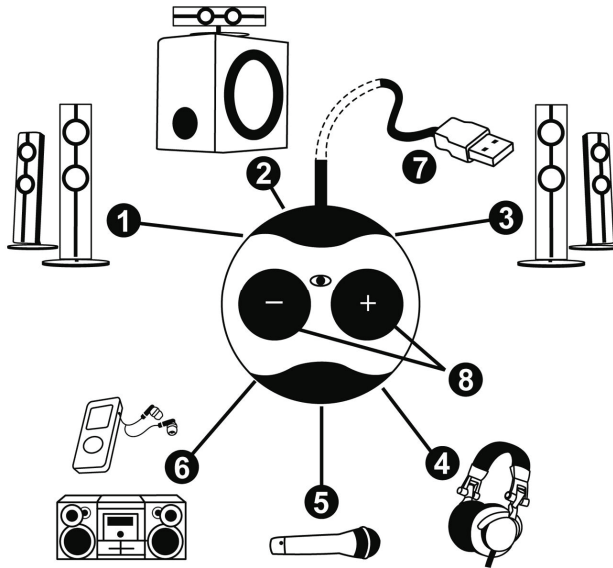
Install MUSE XL Pocket LT3	<p><u>Installing your Gamesurround Muse XL Pocket LT3</u></p> <ul style="list-style-type: none"> - Click Install MUSE XL Pocket LT3. - Follow the on-screen instructions. <p><i>When the installation is complete, the  icon appears in your Windows taskbar.</i></p>
Register	<p><u>Save time by registering your product online!</u></p> <p>Registering with us in this way will simplify the process if you ever need to contact our technical support team.</p>
User Manual	<p><u>Documentation</u></p> <p>View the PDF version of the Gamesurround Muse XL Pocket LT3 manual on your PC.</p>

If you have aborted the installation procedure, proceed as follows to launch the installation menu again:

- Double-click **My Computer** or **Computer**.
- Double-click the CD-ROM or DVD-ROM drive icon .

Log on now to our website (www.hercules.com) to download the latest drivers and software, consult the list of Frequently Asked Questions (FAQ) relating to your sound card and take advantage of user manual updates. You can also view the complete range of Hercules products and find out about upcoming releases.


3. SOUND CARD OVERVIEW



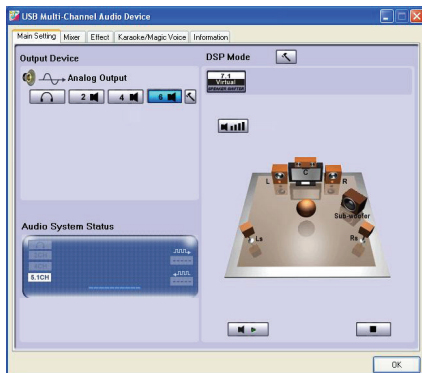
- 1: Stereo output to connect a pair of front speakers (front left and right)
- 2: Stereo output to connect a center speaker and subwoofer
- 3: Stereo output to connect a pair of rear speakers (rear left and right)
- 4: Stereo output to connect headphones
- 5: Stereo input to connect a microphone
- 6: Stereo Line In input (to connect a hi-fi system, for example)
- 7: USB cable to connect the sound card to your PC
- 8: Volume control buttons (press both buttons simultaneously to enable or disable the mute function)

4. SOUND CARD CONFIGURATION

4.1. The Gamesurround Muse XL Pocket LT3 control panel

Once installation of the drivers and software is complete, the  icon appears in the Windows taskbar.

- Click this icon to access the control panel menu.

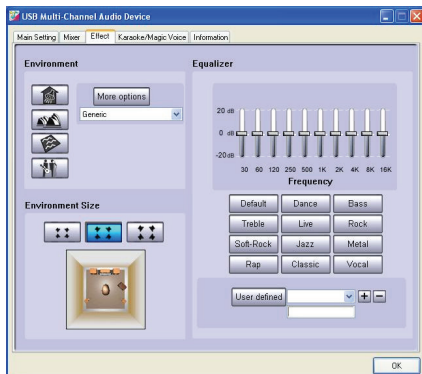


Audio configuration

First, select your audio configuration in the **Output Device** menu according to the elements connected to your module. To optimize sound signal reproduction when playing digital audio files (MP3 and WMA formats), audio CDs, and in games, select one of the following configurations: **Headphones** (headphone output), **Stereo** (stereo output), **Quad** (4-channel output) or **5.1 Surround** (5.1-channel surround sound output).

Testing speakers

When you click on a speaker, the indicator moves to show the active speaker, and a sound is transmitted by this speaker only. In this way, you can verify that all of your speakers are properly connected. Should you notice any issues during the test, verify the connections of your audio setup.



Adding effects

- You can enhance the sound with special effects by selecting an audio environment in the **Effect** tab (Living Room, Auditorium, Forest, Hangar...).

The tone of the sound is modified (More echo, dampened sound, etc.).

- You can also adjust the equalizer, or choose between the available equalizer presets (Dance, Bass, etc.).



Mixer tab

- Adjust the master volume using the mixer's volume knob, and adjust the individual volume of your audio devices using the sliders.

Recording

- Select your recording source (microphone, Line input, etc.).

5. TECHNICAL SUPPORT

If you encounter a problem with your product, please go to <http://ts.hercules.com> and select your language. From there you will be able to access various utilities (Frequently Asked Questions (FAQ), the latest versions of drivers and software) that may help to resolve your problem. If the problem persists, you can contact the Hercules products technical support service ("Technical Support"):

By email:

In order to take advantage of technical support by email, you must first register online. The information you provide will help the agents to resolve your problem more quickly.

Click **Registration** on the left-hand side of the Technical Support page and follow the on-screen instructions.

If you have already registered, fill in the **Username** and **Password** fields and then click **Login**.

By telephone:

United Kingdom	08450800942 Charges at local rate	Monday to Friday from Noon to 4pm and 5pm to 10pm Saturday from 9am to Noon and 1pm to 7pm Sunday from 9am to Noon and 1pm to 4pm
United States	1-866-889-5036 Free	Monday to Friday from 7am to 11am and from Noon to 5pm Saturday and Sunday from 7am to Noon (Eastern Standard Time)
Canada	1-866-889-2181 Free	Monday to Friday from 7am to 11am and from Noon to 5pm Saturday and Sunday from 7am to Noon (Eastern Standard Time)
Denmark	80887690 Free	Monday to Friday from 1pm to 5pm and 6pm to 11pm (English) Saturday from 9am to 1pm and 2pm to 8pm Sunday from 10am to 1pm and 2pm to 5pm
Sweden	0200884567 Free	Monday to Friday from 1pm to 5pm and 6pm to 11pm (English) Saturday from 9am to 1pm and 2pm to 8pm Sunday from 10am to 1pm and 2pm to 5pm
Finland	8000 913060 Free	Monday to Friday from 2pm to 6pm and 7pm to Midnight (English) Saturday from 10am to 2pm and 3pm to 9pm Sunday from 11am to 2pm and 3pm to 6pm

6. WARRANTY

Worldwide, Guillemot Corporation S.A. ("Guillemot") warrants to the consumer that this Hercules product will be free from material defects and manufacturing flaws for a period of two (2) years from the original date of purchase. Should the product appear to be defective during the warranty period, immediately contact Technical Support, who will indicate the procedure to follow. If the defect is confirmed, the product must be returned to its place of purchase (or any other location indicated by Technical Support).

Within the context of this warranty, the consumer's defective product will, at Technical Support's option, be either repaired or replaced. Where authorized by applicable law, the full liability of Guillemot and its subsidiaries (including for indirect damages) is limited to the repair or replacement of the Hercules product. The consumer's legal rights with respect to legislation applicable to the sale of consumer goods are not affected by this warranty.

This warranty shall not apply: (1) if the product has been modified, opened, altered, or has suffered damage as a result of inappropriate or abusive use, negligence, an accident, normal wear, or any other cause not related to a material defect or manufacturing flaw; (2) in the event of failure to comply with the instructions provided by Technical Support; (3) to software not published by Guillemot, said software being subject to a specific warranty provided by its publisher.

7. ENVIRONMENTAL PROTECTION RECOMMENDATION

At the end of its working life, this product should not be disposed of with standard household waste, but rather dropped off at a collection point for the disposal of Waste Electrical and Electronic Equipment (WEEE) for recycling.

This is confirmed by the symbol found on the product, user manual or packaging.



Depending on their characteristics, the materials may be recycled. Through recycling and other forms of processing Waste Electrical and Electronic Equipment, you can make a significant contribution towards helping to protect the environment. Please contact your local authorities for information on the collection point nearest you.

Trademarks

Gamesurround Muse XL™ and Hercules® are trademarks or registered trademarks of Guillemot Corporation S.A. Microsoft® Windows® XP, Vista, 7, DirectX®, DirectMusic®, DirectSound® and the Windows logo are trademarks or registered trademarks of Microsoft Corporation in the United States and/or other countries. Intel® and Pentium® are registered trademarks of Intel Corporation. AMD Athlon® is a registered trademark of Advanced Micro Devices, Inc. Xear 3D® is a registered trademark of C-Media Electronics Inc. EAX® is a registered trademark of Creative Technology Ltd. Adobe® and Acrobat® are registered trademarks of Adobe Systems, Inc. All other trademarks and brand names are hereby acknowledged and are property of their respective owners. Illustrations not binding. Contents, designs and specifications are subject to change without notice and may vary from one country to another.

Declaration of conformity

EC COMPLIANCE NOTICE: this equipment has been tested and found to comply with the limits of the Council Directive 89/336/EEC of 3 May 1989 on the approximation of the laws of the Member States relating to electromagnetic compatibility, amended by Directive 93/68/EEC. In a domestic environment this product may cause radio interference in which case the user may be required to take adequate measures.

CANADIAN COMPLIANCE NOTICE: this Class B digital apparatus meets all requirements of the Canadian Interference-Causing Equipment Regulations.

USA COMPLIANCE NOTICE: this equipment has been tested and found to comply with the limits for a Class B digital device, pursuant to Part 15 of the FCC rules. Operation is subject to the following two conditions:

(1) This device may not cause harmful interference, and

(2) This device must accept any interference received, including interference that may cause undesired operation. These limits are designed to provide reasonable protection against harmful interference in a residential installation. This equipment generates, uses and can radiate radio frequency energy and, if not installed and used in accordance with the instructions, may cause harmful interference to radio communications. However, there is no guarantee that interference will not occur in a particular installation. If this equipment does cause harmful interference to radio or television reception, which can be determined by turning the equipment on and off, the user is encouraged to try to correct the interference by one or more of the following measures:

- Reorient or relocate the receiving antenna.
- Increase the separation between the equipment and receiver.
- Connect the equipment into an outlet on a circuit different from that to which the receiver is connected.
- Consult the dealer or an experienced radio/TV technician for help.

© Guillemot Corporation S.A. 2009. All rights reserved.

This publication may not be reproduced in whole or in part, summarized, transmitted, transcribed, stored in a retrieval system, or translated into any language or computer language, in any form or by any means, electronic, mechanical, magnetic, photocopying, recording, manual or otherwise, without the prior written permission of Guillemot Corporation S.A.

Disclaimer

Guillemot Corporation S.A. reserves the right to make changes to specifications at any time and without notice. The information provided by this document is believed to be accurate and reliable. However, no responsibility is assumed by Guillemot Corporation S.A. either for its use or for the infringement of patents or other rights of third parties resulting from its use. This product may exist in a light or special version for PC integration or other purposes. Certain functions detailed in this manual may not be available in these versions. Wherever possible, a **README.TXT** will be included on the installation CD-ROM detailing the differences between the supplied product and the product described in the present documentation.

End-user software license Agreement

IMPORTANT: please read the Agreement carefully prior to opening and installing the Software. By opening the Software package, you agree to be bound by the terms of this Agreement. The Software enclosed in this package is licensed, not sold, and is only available under the terms of the present license Agreement. If you do not agree with the terms hereafter, you must promptly return the Software within 15 days, together with the entire contents of the box, to the place of purchase.

The Guillemot Corporation S.A. Software (hereafter named the "Software") is copyrighted by Guillemot Corporation S.A. All rights are reserved. The term "Software" refers to all documentation and related material, including drivers, executable programs, libraries and data files. The purchaser is granted a license to use the Software only. The licensee also agrees to be bound by the terms and conditions of the present Agreement concerning copyright and all other proprietary rights for any third party Software, documentation and related material included in the Software package.

Guillemot Corporation S.A. reserves the right to terminate this license in the event of failure to comply with any of the terms or conditions laid out in the present Agreement. On termination, all copies of the Software shall immediately be returned to Guillemot Corporation S.A.; the purchaser remaining liable for any and all resulting damages.

License:

1. The license is granted to the original purchaser only. Guillemot Corporation S.A. retains all title to and ownership of the Software and reserves all rights not expressly granted. The licensee is not permitted to sub-license or lease any of the rights that are hereby granted. Transfer of the license is permitted, provided that the transferor does not retain any part or copy of the Software and the transferee accepts to be bound by the terms and conditions of the present Agreement.
2. The licensee may only use the Software on a single computer at any time. The machine-readable portion of the Software may be transferred to another computer provided it is previously erased from the first machine and there is no possibility that the Software can be used on more than one machine at any one time.
3. The licensee acknowledges the copyright protection belonging to Guillemot Corporation S.A. The copyright notice must not be removed from the Software, nor from any copy thereof, nor from any documentation, written or electronic, accompanying the Software.
4. The licensee is granted the right to make one back-up copy of the machine-readable portion of the Software on the condition that all copyright and proprietary notices are also reproduced.
5. Except where the present Agreement expressly permits, the licensee is strictly prohibited from engaging in, nor may he permit third parties to engage in, the following: providing or disclosing the Software to third parties; providing use of the Software in a network, multiple PCs, multi-user or time-sharing arrangement where the users are not individual licensees; making alterations or copies of any kind of the Software; making any attempt to disassemble, de-compile or reverse engineer the Software in any way or form, or engaging in any activity aimed at obtaining underlying information not visible to the user during normal use of the Software; making copies or translations of the User Manual.