

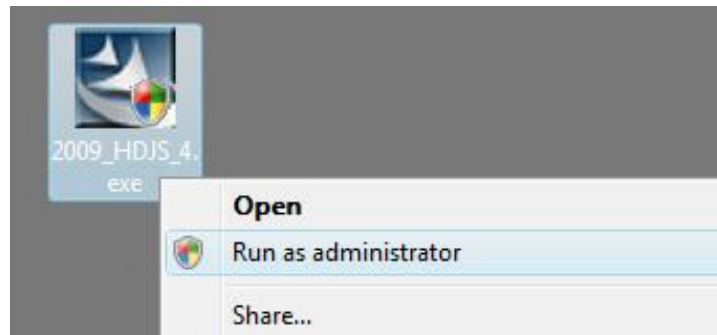
## **DJ Console Series – Installation Procedure (Windows)**

(Last updated: September 2015)

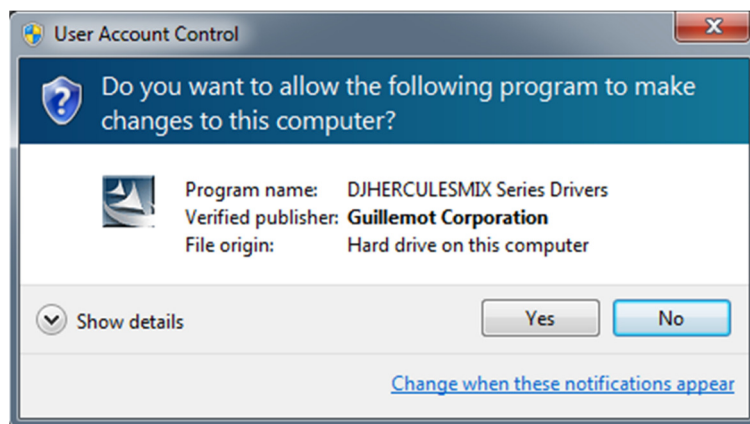
**IMPORTANT:** Before proceeding with the installation, be sure that you have Administrator privileges on the computer you are planning to use. This is very important in order to insure that all components are installed correctly.

If you are unsure about your privileges, proceed as follow:

- **Right-click** on the driver installation file you've just downloaded and select **Run as Administrator**



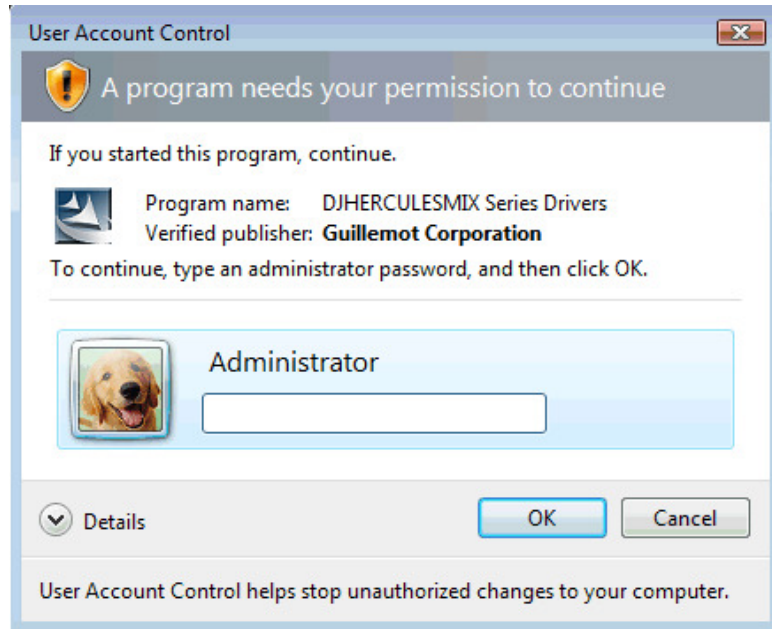
- If you have Administrator privileges, a similar window should appear:



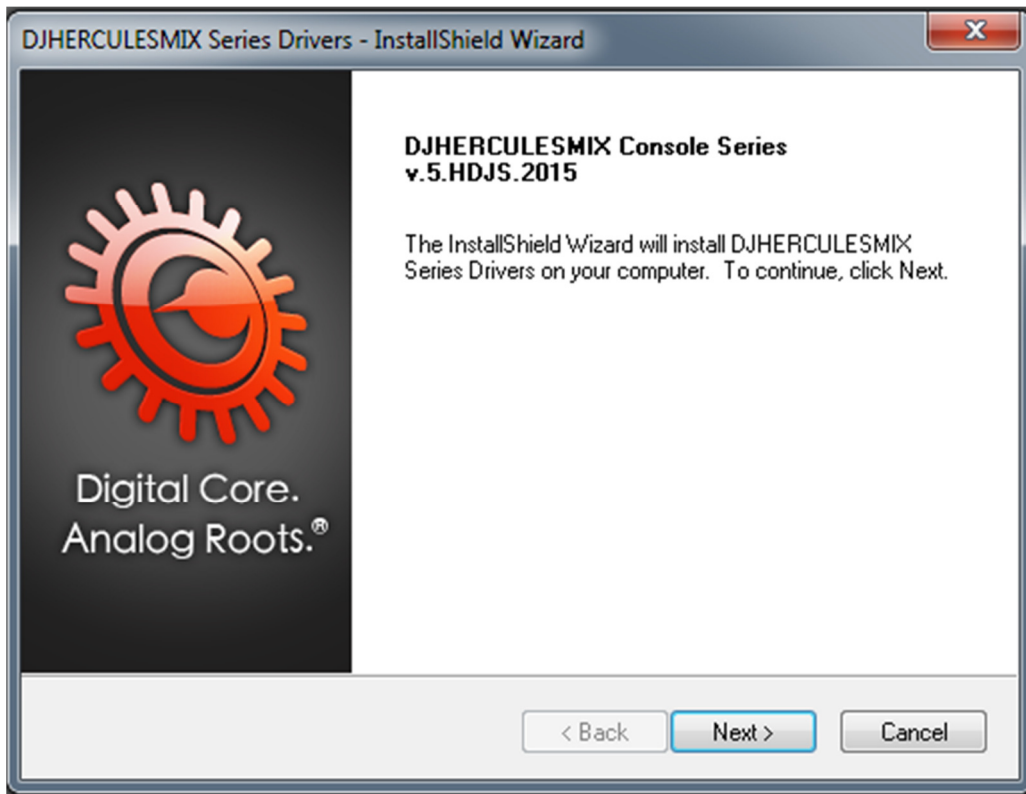
Simply click **Yes** to continue the installation.



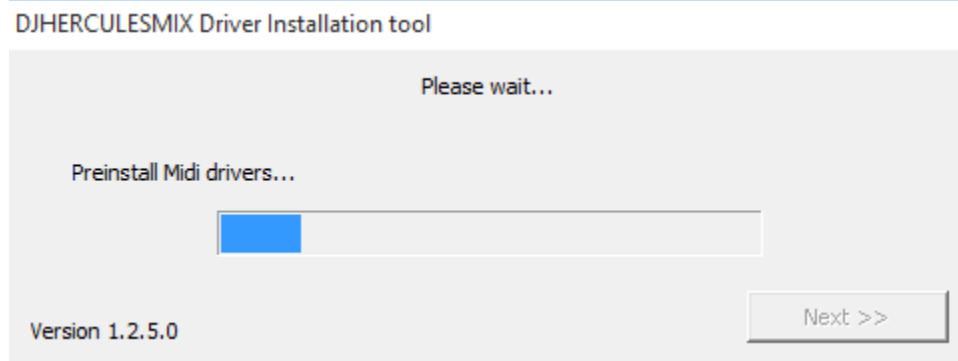
- If you don't have the required privileges, you will need to provide an **Administrator password** in order to continue.



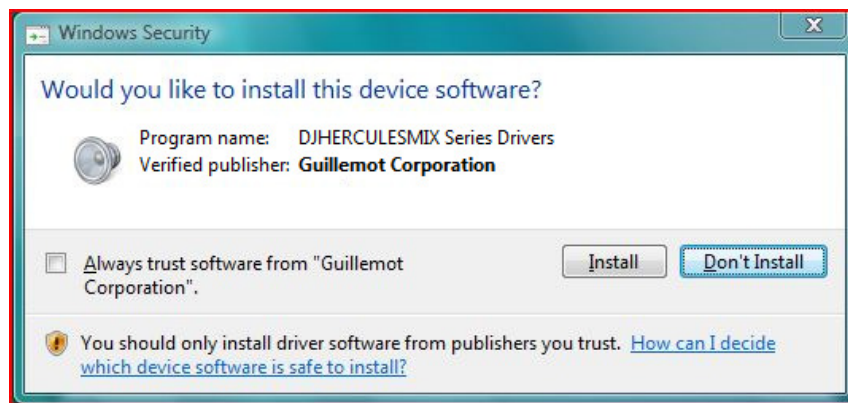
## Installation



- a) Once you've passed the first few steps of the installer process and files have been copied to your computer, the drivers will be preinstalled.

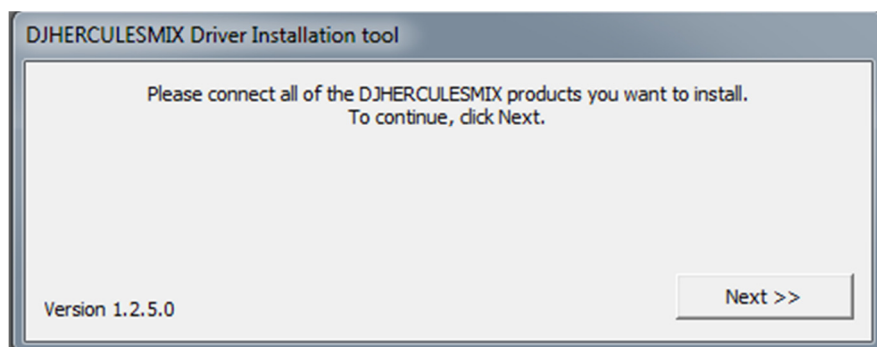


Windows may display some prompts in succession, regarding installation of the various components:




If this is the case, accept to install the software at each of these prompts to proceed with the installation.

- b) When all the components have been installed, a dialog box appears, prompting you to connect your DJ device to your computer's USB port.

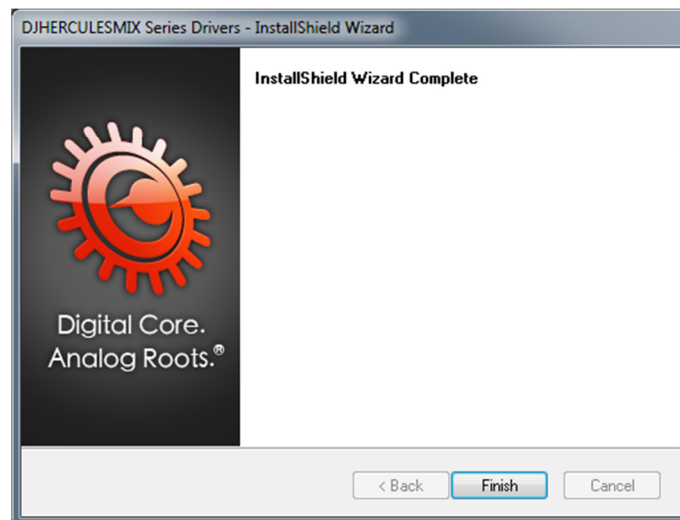


Connect the device, and click **Next**.

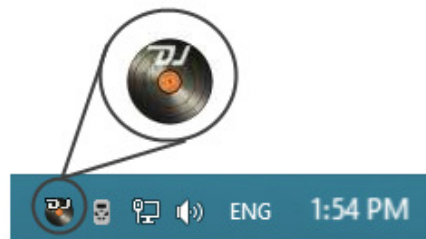
- c) Your computer should automatically detect the DJ device and completes the installation of the required drivers.

 Please note that installation of the drivers may take some time, depending on your computer's performance. Let the installation procedure run its course and follow the on-screen instructions.

You are notified when the installation is complete.



The DJ Console icon appears in your Windows taskbar, next to the clock, indicating that your DJ Console is installed and ready for use



Please note that for the **DJConsole Rmx2** and **DJControl Jogvision**, the icon appears as follow:

