

CONTENTS

1. INTRODUCTION	2
1.1. System requirements	2
2. HARDWARE INSTALLATION	2
2.1. Uninstalling existing graphics board drivers	2
2.2. Installing the board	4
3. OUTPUT DEVICE CONNECTION	5
4. SOFTWARE INSTALLATION.....	7
4.1. Driver installation	7
4.1.1. <i>Driver installation for Windows 98 / Millennium</i>	7
4.1.2. <i>Driver installation for Windows 2000</i>	8
4.1.3. <i>Driver installation for Windows XP</i>	9
4.2. Applications installation.....	9
5. TECHNICAL SUPPORT	11
5.1. If you need to return a product.....	11
5.2. Save time by registering your product online!.....	11

ENGLISH

FRANÇAIS

DEUTSCH

NEDERLAND

ITALIANO

ESPAÑOL

PORTUGUÊS

HOTLINE

1. INTRODUCTION

This manual deals principally with hardware and software installation for Windows 98, Windows Millennium, Windows 2000 and Windows XP operating systems.

1.1. System requirements

- Intel Pentium 266MHz or AMD 333MHz and higher or compatible
- AGP slot
- 64MB RAM
- 10MB hard disk space (or more for installing games)
- CD-ROM or DVD-ROM drive
- DVD-ROM drive (for DVD playback)
- Operating system: Microsoft Windows 98/98 SE, Windows Me, Windows 2000, Windows XP

2. HARDWARE INSTALLATION

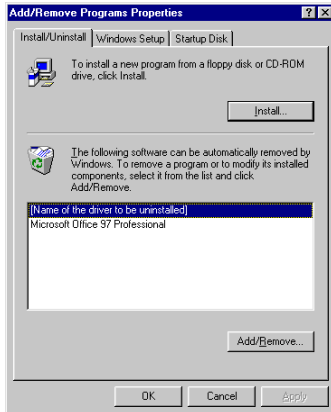
2.1. Uninstalling existing graphics board drivers

If your computer is already equipped with a graphics board, you must remove all existing drivers to avoid any subsequent conflict between old and new drivers!



Some graphics boards are integrated into your PC motherboard and cannot therefore be physically uninstalled. Contact your PC manufacturer for details on how to disable these chipsets.

Depending on your operating system, the installation screens and procedure may vary slightly from those described in this manual.



- Click on **Start/Settings/Control Panel**.
- Double-click on the **Add/Remove Programs** icon.
- Select the line corresponding to the graphics board drivers you wish to replace.
- Click on **Add/Remove....**

The system will ask you if you want to continue uninstalling the drivers.

- Click on **Yes**.

After you have uninstalled your existing graphics board drivers, you can start installing your new 3D Prophet graphics board.

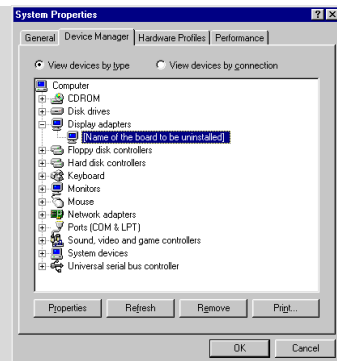


Fig. 1

If your existing graphics board drivers are not included in the above list:

Under Windows 98 (Fig. 1):

- Click on **Start/Settings/Control Panel**.
- Double-click on the **System** icon.
- Select the **Device Manager** tab.
- Select the graphics board drivers you wish to replace in the **Display adapters** section.
- Click on **Remove**.

Under Windows Millennium (Fig. 1):

- Click on **Start/Settings/Control Panel**.
- Click on **View all Control Panel options** if necessary.
- Double-click on the **System** icon.
- Select the **Device Manager** tab.
- Select the graphics board drivers you wish to replace in the **Display adapters** section.
- Click on **Remove**.

Under Windows XP / 2000 (Fig. 2):

- Click on **Start/Settings/Control Panel**.
- Double-click on the **System** icon.
- Select the **Hardware** tab.
- Click on **Device Manager**.
- Select the graphics board drivers you wish to replace in the **Display adapters** section.
- Click on **Action/Uninstall**.

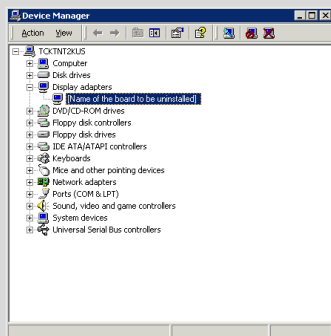
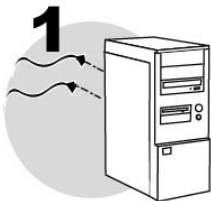


Fig. 2

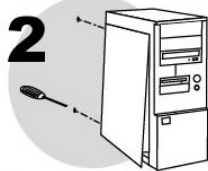
After you have uninstalled your existing graphics board drivers, you can start installing your new 3D Prophet graphics board.

2.2. Installing the board

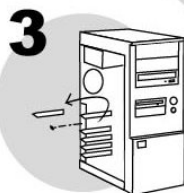


Switch off the PC and any peripherals such as the monitor or printer.

1. Unplug the power supply cable(s) and the monitor cable.



2. Remove the PC cover (for further information, consult your PC manual).



3. If a graphics board has not been previously installed, unscrew the slot cover corresponding to the appropriate slot (AGP or PCI depending on your graphics board) and remove it.

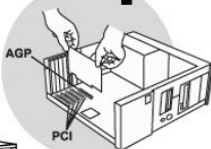
If your PC already has a graphics board, remove it, keeping the screw which attached the previous board.



Static electricity can severely damage electronic components. Before removing the board from its plastic bag, touch the metallic back plate of your PC with your hand to discharge any static electricity from your body.

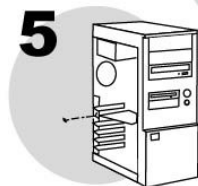
- Do not touch the printed circuits on the board.
- Do not let anybody else hold the board.
- Do not let your clothes touch any of the components.

4



4. Insert your graphics board into its slot, pushing firmly on the board to make sure it is properly fixed in place.

5

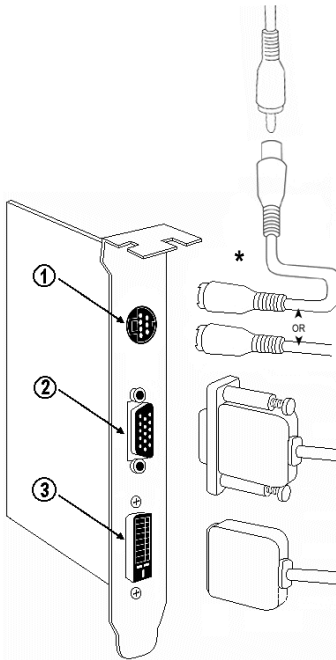


5. Screw the board bracket into position on your computer chassis and replace the PC cover.

3. OUTPUT DEVICE CONNECTION



Make sure that your PC and output device are switched off!



Your 3D Prophet graphics board may have up to three output connectors:

- ① an S-VHS connector for connecting a TV set
- ② a VGA connector for connecting a monitor
- ③ a DVI connector for connecting a digital flat panel

* S-VHS / composite (RCA) converter cable supplied if your graphics board doesn't feature a composite video connector.

N.B.: some versions of the 3D Prophet graphics board with 3 output connectors do not include a DVI connector but feature 2 VGA connectors, instead.

Connecting a VGA monitor:

- Plug the monitor cable into the VGA connector on your graphics board.



Consult your VGA monitor manual for more information about maximum resolutions, refresh rates and the number of colors supported by your monitor.

ENGLISH

FRANÇAIS

DEUTSCH

NEDERLAND

ITALIANO

ESPAÑOL

PORTUGUÊS

HOTLINE

Connecting a TV set (if your graphics board is equipped with a TV output):

- Connect your TV set to the S-VHS connector on your graphics board by following the directions set out in the table below.

If your TV features the following video input:	Use:
S-VHS	a standard S-VHS cable (not supplied)
Composite video (RCA)	the S-VHS / composite converter cable supplied + a standard composite video cable (not supplied)
SCART	an S-VHS / SCART adapter + a standard S-VHS cable (not supplied)

- Switch on your TV set and set it to the video input channel.

Please note that this product incorporates a Macrovision copyright protection circuit so that direct connection to a VCR or other recording device will render DVD playback impossible.



Macrovision Copyright Notice: this product incorporates copyright protection technology that is protected by method claims of certain U.S. patents and other intellectual property rights owned by Macrovision Corporation and other rights owners. Use of this copyright protection technology must be authorized by Macrovision Corporation, and is intended for home and other limited viewing uses only, unless otherwise authorized by Macrovision Corporation. Reverse engineering or disassembly is prohibited.

Connecting a digital flat panel (if your graphics board is equipped with a DVI output):

- Connect your digital flat panel to the DVI connector on your graphics board.

If your flat panel complies with an earlier standard, you may need to use a DVI converter cable or adapter (not supplied).

4. SOFTWARE INSTALLATION

Once your graphics board has been installed, reconnect the power supply cable(s) and switch your PC back on. Because the configuration of the board is Plug and Play, Windows will automatically detect its presence.

N.B.: your installation screens and procedure may vary slightly from those described in this manual.



Because drivers are constantly being developed, the driver provided on your CD-ROM may not be the most recent version. You can visit the Hercules website (www.hercules.com) to verify this and, if necessary, download the very latest version.

4.1. Driver installation

4.1.1. Driver installation for Windows 98 / Millennium



Windows will display an **Add New Hardware Wizard** dialog box informing you that the system has found a **Standard PCI Graphics Adapter (VGA)**.

- Click on **Next** to install the default VGA drivers.
- Click on **Finish** to complete the setup.

Windows will prompt you to reboot your computer.

- Click on **Yes**.

Windows will display an **Add New Hardware Wizard** dialog box informing you that the system has found a **Standard PCI Graphics Adapter (3D Prophet 9000 Series only)**.


- Click on **Next** to install the default drivers.
- Click on **Finish** to complete the setup.



- Insert the installation CD-ROM into your CD-ROM drive.

The **3D Prophet RADEON Series** installation menu automatically appears.

If the installation menu is not launched automatically:

- Double-click on **My Computer**.
- Double-click on the  icon.

- Click on **Drivers**.
- Follow the on-screen instructions.

Windows will prompt you to reboot your computer.

- Click on **Finish**.



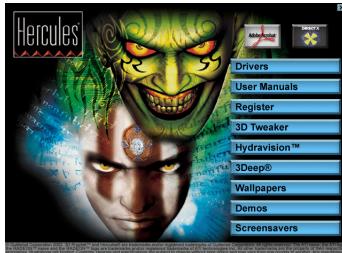
Often, you will need to reinstall your 3D applications (games, etc.) after installing a new graphics board.

4.1.2.Driver installation for Windows 2000



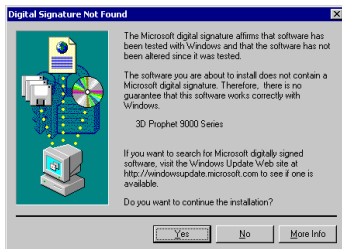
*Windows will display a **Found New Hardware Wizard** dialog box.*

- Insert the installation CD-ROM into your CD-ROM drive.



*The **3D Prophet RADEON Series** installation menu automatically appears.*

- Click on **Drivers**.
- Follow the on-screen instructions.



*The **Digital Signature Not Found** dialog box appears.*

- Click on **Yes**.

Windows will prompt you to reboot your computer.

- Click on **Finish**.



Often, you will need to reinstall your 3D applications (games, etc.) after installing a new graphics board.

4.1.3. Driver installation for Windows XP



Windows will display a **Found New Hardware Wizard** dialog box informing you that the system has found a **Video Controller (VGA Compatible)**. The wizard will suggest that you **Install the software automatically (Recommended)**.

- Insert the installation CD-ROM into your CD-ROM drive.



The **3D Prophet RADEON Series** installation menu automatically appears.

- Click on **Drivers**.
- Follow the on-screen instructions.

Windows may display a **Hardware Installation** warning.

- Click on **Continue Anyway**.

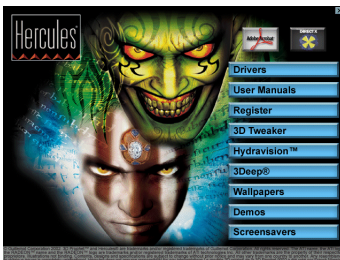
Windows will prompt you to **reboot your computer**.

- Click on **Finish**.



Often, you will need to reinstall your 3D applications (games, etc.) after installing a new graphics board.


4.2. Applications installation







- Insert the installation CD-ROM into your CD-ROM drive.

The installation menu automatically appears, containing all the different options available.

If the installation menu is not launched automatically:


- Double-click on **My Computer**.
- Double-click on the  icon.

- Simply select each element you wish to install and follow the on-screen instructions to install them.

	<p><i>Drivers</i></p> <p>Click on this option to install your Hercules graphics board drivers.</p>
	<p><i>Electronic documentation</i></p> <p>Click on this option to install the electronic documentation that accompanies the Hercules software suite. Obtain additional information relating to your new 3D Prophet graphics board functions and configuration. Set Direct3D and OpenGL parameters and consult the Glossary of terms used in this manual.</p> <p>Once installed, access this manual by clicking on Start/Programs/Hercules/3D Prophet xxxx/User Manual.</p>
	<p><i>DirectX</i></p> <p>Install DirectX to take advantage of all the latest innovations from the world of 3D.</p>
	<p><i>Adobe Acrobat Reader</i></p> <p>Acrobat Reader allows you to view, navigate through and print documents in PDF format.</p>

Game demos and software applications also allow you to test out your new graphics board.

If you have aborted the installation procedure, the following instructions will launch the installation menu again:

- Double-click on **My Computer**.
- Double-click on the  icon.

Log on now to our website (www.hercules.com) to download the latest drivers and software, consult the list of Frequently Asked Questions (FAQ) relating to your graphics board and view our electronic manuals. You can also have a look at the complete range of Hercules products and find out about forthcoming releases.

5. TECHNICAL SUPPORT

Before you contact us (*), please have the following information/items ready:

- Product name,
- Date of purchase of your product,
- Your full system configuration details: processor type, memory, operating system,
- Pen and paper.

Please have your computer switched on and ready at the point where you have encountered a problem.

5.1. If you need to return a product

Hercules offers a standard 3 year parts & service warranty.

1. To return a product for factory service, contact a Hercules technical support representative at the phone number corresponding to the country you live in (*).
 - **In the United Kingdom:** before taking any action, please contact our Technical Support Dept. on **020 7216 0047** or by email at **hercules.uk@guillemotsupport.com** who will be able to advise you as to the best possible solution.
 - **In Continental Europe, Australia and New Zealand:** after receiving confirmation from our technical support service (*) that your product is defective, please follow the instructions we provide to have your product replaced.
 - **In the USA and Canada:** refund policies apply to products purchased directly from Hercules (30 days).
2. When returning the product, be sure to include all materials, such as the manual(s), connection cable(s), installation CD(s) and the product packaging box. **Note: only packages that have been assigned an RMA (Return Merchandise Authorization) number by a technical support agent will be accepted.**

(*) Hotline details are listed at the end of this manual.

5.2. Save time by registering your product online!

Insert the installation CD-ROM into your CD-ROM drive and click on **Register**. Registering with us in this way will simplify the process if you ever need to contact our technical support team. If you wish, you can also be added to our priority mailing list to receive information about our new Hercules products and our latest special offers.

ENGLISH

FRANÇAIS

DEUTSCH

NEDERLAND

ITALIANO

ESPAÑOL

PORTUGUÊS

HOTLINE

Trademarks

Hercules®, 3D Prophet™ and Guillemot™ are trademarks and/or registered trademarks of Guillemot Corporation S.A. ATI® and RADEON™ are trademarks and/or registered trademarks of ATI Technologies, Inc. Intel® and Pentium® are registered trademarks of Intel Corporation. DVI™ is a trademark of Digital Display Working Group. AMD® is a registered trademark of Advanced Micro Devices, Inc. Microsoft® Windows® 98, Millennium, 2000, XP, Direct3D® and DirectX® are either trademarks or registered trademarks of Microsoft Corporation in the United States and/or other countries. Adobe® and Acrobat® are registered trademarks of Adobe Systems, Inc. OpenGL® is a registered trademark of Silicon Graphics. All other trademarks and brand names are hereby acknowledged and are property of their respective owners. Illustrations not binding. Contents, designs and specifications are subject to change without notice and may vary from one country to another.

Declaration of conformity

EC COMPLIANCE NOTICE: this equipment has been tested and found to comply with the limits of the Council Directive 89/336/EEC of 3 May 1989 on the approximation of the laws of the Member States relating to electromagnetic compatibility, amended by Directive 93/68/EEC. In a domestic environment this product may cause radio interference in which case the user may be required to take adequate measures. The use of shielded cables for connection of the monitor to the board is required to meet EC requirements.

CANADIAN COMPLIANCE NOTICE: this Class B digital apparatus meets all requirements of the Canadian Interference-Causing Equipment Regulations.

USA COMPLIANCE NOTICE: this equipment has been tested and found to comply with the limits for a Class B digital device, pursuant to Part 15 of the FCC rules. Operation is subject to the following two conditions:

- (1) This device may not cause harmful interference, and
- (2) This device must accept any interference received, including interference that may cause undesired operation.

These limits are designed to provide reasonable protection against harmful interference in a residential installation. This equipment generates, uses and can radiate radio frequency energy and, if not installed and used in accordance with the instructions, may cause harmful interference to radio communications. However, there is no guarantee that interference will not occur in a particular installation. If this equipment does cause harmful interference to radio or television reception, which can be determined by turning the equipment on and off, the user is encouraged to try to correct the interference by one or more of the following measures:

- Reorient or relocate the receiving antenna.
- Increase the separation between the equipment and receiver.
- Connect the equipment into an outlet on a circuit different from that to which the receiver is connected.
- Consult the dealer or an experienced radio/TV technician for help.

Copyright

© Guillemot Corporation S.A. 1999-2002. All rights reserved.

This publication may not be reproduced in whole or in part, summarized, transmitted, transcribed, stored in a retrieval system, or translated into any language or computer language, in any form or by any means, electronic, mechanical, magnetic, photocopying, recording, manual or otherwise, without the prior written permission of Guillemot Corporation S.A.

Disclaimer

Guillemot Corporation S.A. reserves the right to make changes to specifications at any time and without notice. The information provided by this document is believed to be accurate and reliable. However, no responsibility is assumed by Guillemot Corporation S.A. either for its use or for the infringement of patents or other rights of third parties resulting from its use. This product may exist in a light or special version for PC integration or other purposes. Certain functions detailed in this manual may not be available in these versions. Wherever possible, a **README.TXT** will be included on the installation CD-ROM detailing the differences between the supplied product and the product described in the present documentation.

End-user software license Agreement

IMPORTANT: please read the Agreement carefully prior to opening and installing the Software. By opening the Software package, you agree to be bound by the terms of this Agreement. The Software enclosed in this package is licensed, not sold, and is only available under the terms of the present license Agreement. If you do not agree with the terms hereafter, you must promptly return the Software within 15 days, together with the entire contents of the box, to the place of purchase.

The Guillemot Corporation S.A. Software (hereafter named the "Software") is copyrighted by Guillemot Corporation S.A. All rights are reserved. The term "Software" refers to all documentation and related material, including drivers, executable programs, libraries and data files. The purchaser is granted a license to use the Software only. The licensee also agrees to be bound by the terms and conditions of the present Agreement concerning copyright and all other proprietary rights for any third party Software, documentation and related material included in the Software package.

Guillemot Corporation S.A. reserves the right to terminate this license in the event of failure to comply with any of the terms or conditions laid out in the present Agreement. On termination, all copies of the Software shall immediately be returned to Guillemot Corporation S.A.; the purchaser remaining liable for any and all resulting damages.

License:

1. The license is granted to the original purchaser only. Guillemot Corporation S.A. retains all title to and ownership of the Software and reserves all rights not expressly granted. The licensee is not permitted to sub-license or lease any of the rights that are hereby granted. Transfer of the license is permitted, provided that the transferor does not retain any part or copy of the Software and the transferee accepts to be bound by the terms and conditions of the present Agreement.
2. The licensee may only use the Software on a single computer at any time. The machine-readable portion of the Software may be transferred to another computer provided it is previously erased from the first machine and there is no possibility that the Software can be used on more than one machine at any one time.
3. The licensee acknowledges the copyright protection belonging to Guillemot Corporation S.A. The copyright notice must not be removed from the Software, nor from any copy thereof, nor from any documentation, written or electronic, accompanying the Software.
4. The licensee is granted the right to make one back-up copy of the machine-readable portion of the Software on the condition that all copyright and proprietary notices are also reproduced.
5. Except where the present Agreement expressly permits, the licensee is strictly prohibited from engaging in, nor may he permit third parties to engage in, the following: providing or disclosing the Software to third parties; providing use of the Software in a network, multiple PCs, multi-user or time-sharing arrangement where the users are not individual licensees; making alterations or copies of any kind of the Software; making any attempt to disassemble, de-compile or reverse engineer the Software in any way or form, or engaging in any activity aimed at obtaining underlying information not visible to the user during normal use of the Software; making copies or translations of the User Manual.

Warranty

3D Prophet graphics boards come with a standard 3 year parts and service warranty from the date of purchase. Guillemot Corporation S.A.'s entire liability and your exclusive remedy is limited to the replacement of defective products. In no event shall Guillemot Corporation S.A. be liable to you or to any third party for direct or indirect consequential, incidental or special damages which you may incur as a result of using the aforementioned products and/or Software subject to the End-user software license Agreement contained in this document, including, but not limited to, loss of data, or information of any kind.