

CONTENTS

1.	INTRODUCTION	2
2.	THE VIDEO CAPTURE PRESET	3
3.	THE AUDIO EDITOR PRESET	4
4.	THE VIDEO EDITOR PRESET	5
5.	PERSONALIZING A PRESET	6
6.	EXAMPLE OF HOW TO PERSONALIZE A PRESET	8

1. INTRODUCTION

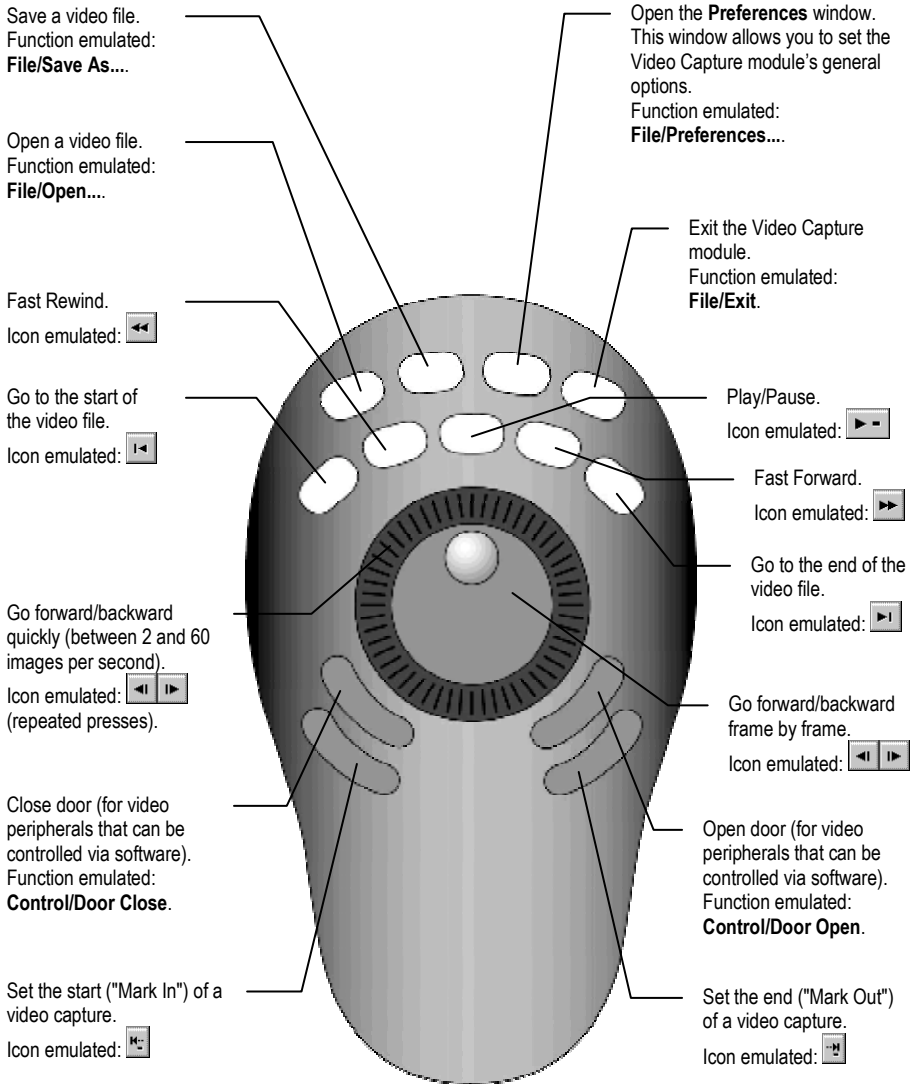
The ShuttlePRO controller uses presets to link its buttons to different functions in various programs. The idea is to program an application's keyboard shortcuts onto the ShuttlePRO's buttons.

For example, the standard keyboard shortcut allowing you to save a file is [Ctrl]+[S]. This function can be attributed to a button on the ShuttlePRO; once this is done, you will no longer have to click on File/Save to save a file, but rather simply press the corresponding button. This is referred to as emulating one of the application's functions.

This manual is a reference guide for the ShuttlePRO, explaining in detail the functions of all buttons in each of the MediaStudio Pro software suite's three presets: Video Capture, Audio Editor and Video Editor.

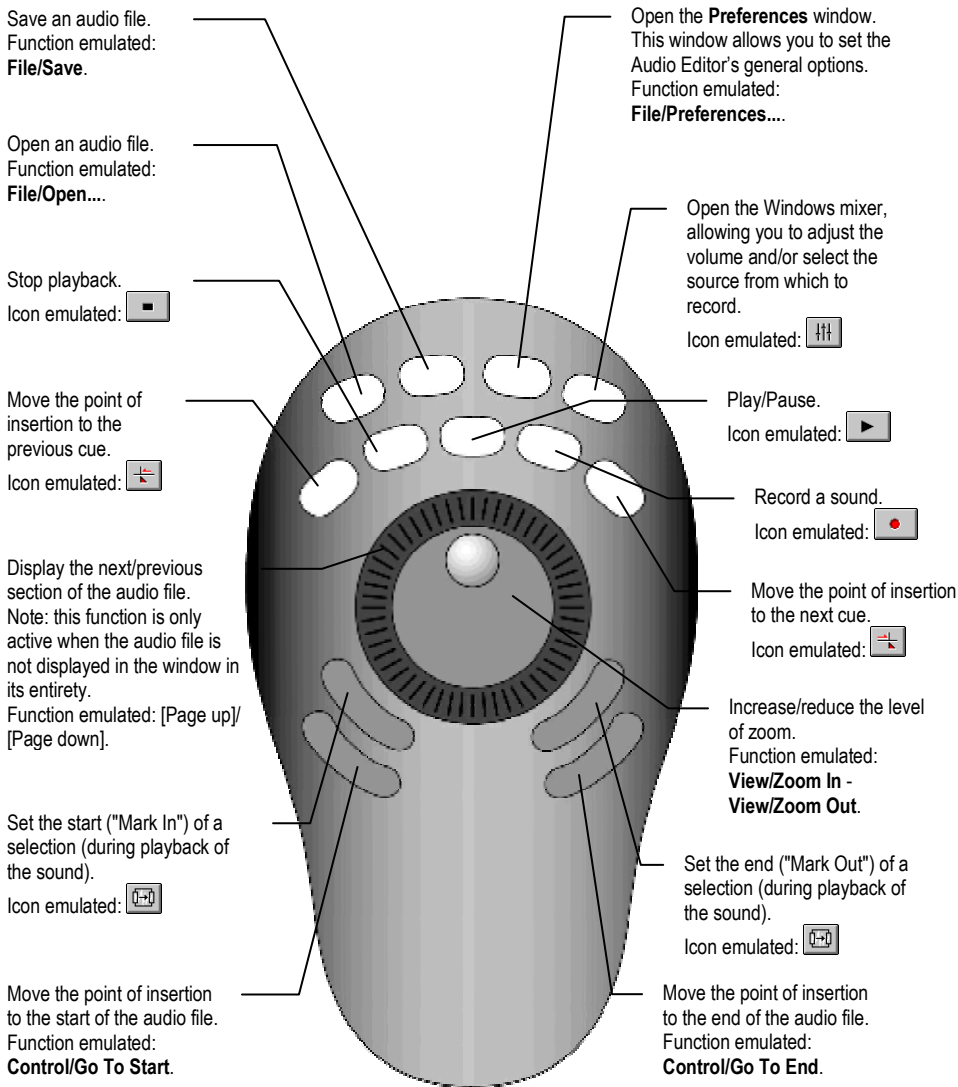
The presets are meant to be generic and are therefore adapted to the needs of the majority of users. Nevertheless, you may wish to implement other functions that you find yourself using frequently. This process is explained in detail in the [Personalizing a preset](#) section, and is further illustrated in the [Example of how to personalize a preset](#) section.

2. THE VIDEO CAPTURE PRESET



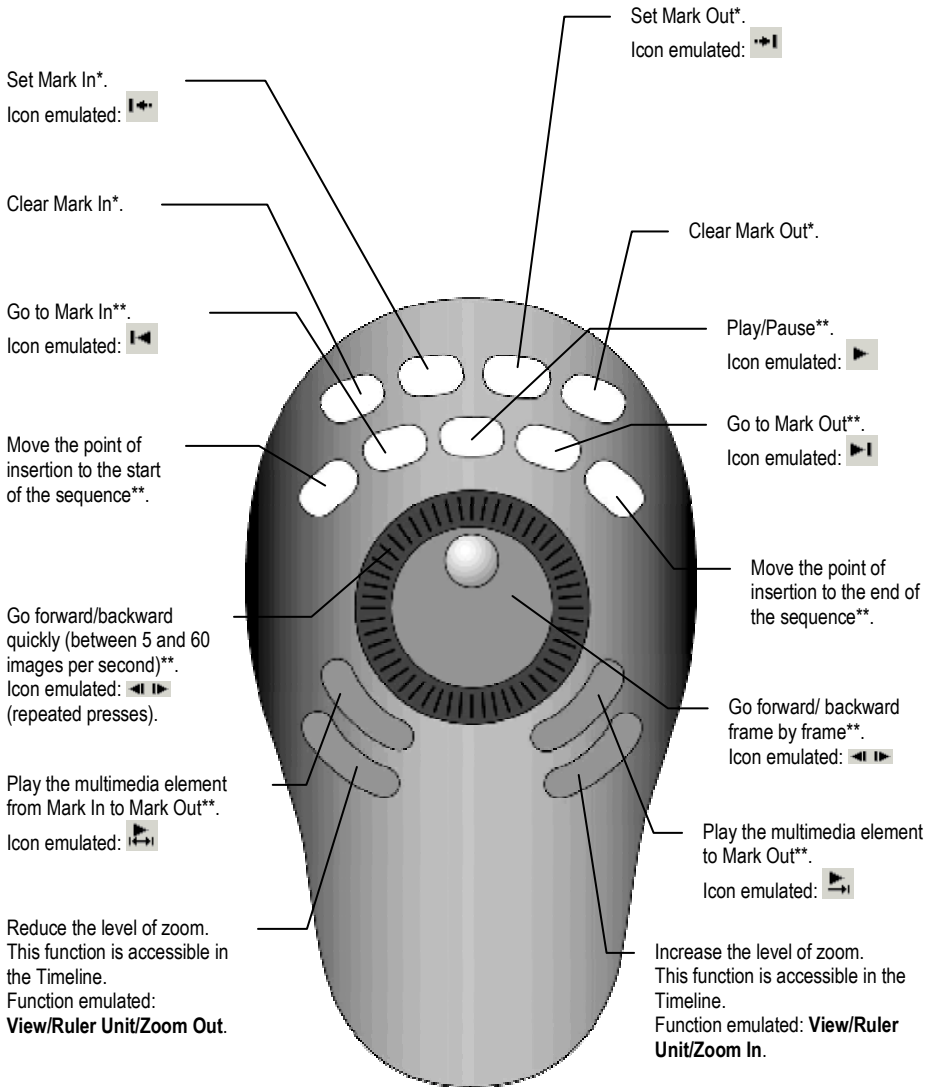
Note: some functions are only active once a video has been captured.

3. THE AUDIO EDITOR PRESET



Note: some functions are only active when a sound is being edited.

4. THE VIDEO EDITOR PRESET



* This function is only accessible in the **Source** window.

** This function is accessible in the **Source** and **Preview** windows.

5. PERSONALIZING A PRESET

ShuttlePRO comes with a variety of presets for different video editing applications, including Ulead MediaStudio Pro. These presets will allow you to access each program's essential functions via the ShuttlePRO.

Nevertheless, some presets may suit you better than others. For example, the function programmed onto a given button may not seem particularly useful to you, while a function that you find indispensable might not have been integrated into the preset. With this in mind, the software helpfully allows you to modify existing presets in order to redefine buttons' functions.

Similarly, if you are using an application for which no preset is available, you can create your own and define the function of each of the ShuttlePRO's buttons.

The procedure outlined below explains how to personalize your presets:

- Click on the  icon.
- Click on **Open ShuttlePRO Control Panel...**

The preset personalization interface appears.

If you wish to modify an existing preset:

- Select the preset to be modified from the **Target Application** list box.


If you wish to create a new preset:

- Click on **File/Create New Settings**.
- Enable the **Create Empty Settings** option.
- Click on **OK**.

A dialog box appears, asking you to select the executable file corresponding to the application for which you would like to create a preset.

- Select the executable file in question and click on **Open**.

Note: the executable files corresponding to the three MediaStudio Pro modules are located by default in **C:\Program Files\Ulead Systems\Ulead MediaStudio Pro 6.5 VE** (**aeditor.exe** for the Audio Editor module, **VCapture.exe** for the Video Capture module and **veditor.exe** for the Video Editor module).

- Rename the preset, if necessary (by default, the preset's name corresponds to the name of the executable file) by clicking on the  icon and selecting the **Rename Settings** option.

- Press the button onto which you would like to assign a function (or turn the jog wheel to the appropriate position, as the interface displays the different positions: **Shuttle in Left** or **Shuttle in Right** (numbered from 1 to 7)).
- Click on the **Computer Response** button to select the type of action to be carried out:

Do Nothing: this option disables the button.

Same as Lower Value: this option can only be used for positions on the Shuttle's jog wheel. It allows you to apply the same action to a position as that defined for the previous position. Example: you have emulated the Fast-forward action on the **Shuttle in Right 1** position. By selecting the **Same as Lower Value** option, the **Shuttle in Right 2** position will automatically emulate the Fast-forward action.

Type Keystroke: this option allows you to emulate a keyboard shortcut.

Please refer to the software's documentation for a list of keyboard shortcuts, then click inside the **Keystroke** field and press the keys which make up the keyboard shortcut you wish to use.

The **Frequency** field then allows you to select the manner in which the keyboard shortcut will be emulated. Three types of frequency are available: a single time, a certain number of times per second, or hold down. For keyboard shortcuts corresponding to single actions (example: open a file), the **Once Only** frequency is appropriate. For actions such as Fast-forward, it is best to select the **Hold Down and Auto-Repeat** frequency, or to select a precise rhythm (for each position on the Shuttle's jog wheel, for example).

For the action to be carried out immediately, enable the **Sync release** option. This simulates an immediate release of the key, resulting in an instantaneous action.

Enter a description of the action in the **Comment** field, in order to help you to easily identify each button's function in your different presets.

Press Modifier Keys: this option allows you to emulate pressing one or more special keys (Shift, Control, the Windows key, Alt or Alt Gr - the right Alt key on European keyboards). An example: holding down the [Shift] key often allows you to select several files. Simply click on the button(s) you wish to use.

For the action to be carried out immediately, enable the **Sync release** option. This simulates an immediate release of the key, resulting in an instantaneous action.

Enter a description of the action in the **Comment** field, in order to help you to easily identify each button's function in your different presets.

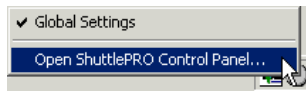
Scroll Up / Scroll Down: these options allow you to scroll the screen up or down. The **Scroll Amount** field appears, allowing you to set the scrolling speed (expressed in number of lines).

Enter a description of the action in the **Comment** field, in order to help you to easily identify each button's function in your different presets.

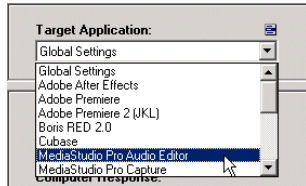
- Repeat this procedure for each of the buttons you wish to program.
- Once your preset has been defined, click on **OK**.

6. EXAMPLE OF HOW TO PERSONALIZE A PRESET

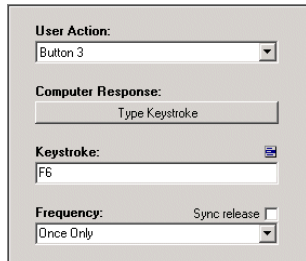
What follows is a step-by-step example of how to personalize a preset. The Audio Editor module's preset allows you to define the start and end of a selection, but does not enable you to listen to it again using the ShuttlePRO. Therefore, we will modify the existing preset and replace access to the **Preferences** window (which is most useful when getting to know the software) with the Read selection function.



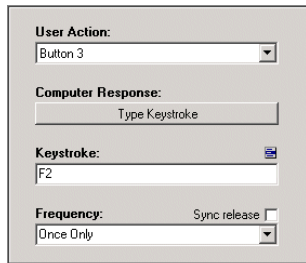
- Click on the  icon.
- Click on **Open ShuttlePRO Control Panel...**



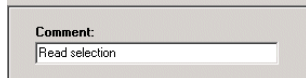
- Select the **MediaStudio Pro Audio Editor** preset in the **Target Application** list box.



- The **Preferences** window is opened by pressing button 3. Press this button to modify its function.



- In the **Keystroke** field, press the shortcut key corresponding to the Read Selection function, which happens to be [F2].
- Enter a new description of the action in the **Comment** field.
- Click on **Apply** to save the changes.



Trademarks

Hercules® and DV Action!™ are trademarks and/or registered trademarks of Guillemot Corporation S.A. Microsoft® Windows® is a registered trademark of Microsoft Corporation in the United States and/or other countries. Ulead MediaStudio Pro™ is a trademark of Ulead Systems, Inc. ShuttlePro™ is a trademark of Contour AVS, Inc. All other trademarks and brand names are hereby acknowledged and are property of their respective owners. Illustrations not binding. Contents, designs and specifications are subject to change without notice and may vary from one country to another.

Copyright

© Guillemot Corporation S.A. 1999-2002. All rights reserved.

This publication may not be reproduced in whole or in part, summarized, transmitted, transcribed, stored in a retrieval system, or translated into any language or computer language, in any form or by any means, electronic, mechanical, magnetic, photocopying, recording, manual or otherwise, without the prior written permission of Guillemot Corporation S.A.

Disclaimer

Guillemot Corporation S.A. reserves the right to make changes to specifications at any time and without notice. The information provided by this document is believed to be accurate and reliable. However, no responsibility is assumed by Guillemot Corporation S.A. either for its use or for the infringement of patents or other rights of third parties resulting from its use. This product may exist in a light or special version for PC integration or other purposes. Certain functions detailed in this manual may not be available in these versions. Wherever possible, a **README.TXT** will be included on the installation CD-ROM detailing the differences between the supplied product and the product described in the present documentation.

Log on now to our website (www.hercules.com) to download the latest drivers and software, consult the list of Frequently Asked Questions (FAQ) relating to your product and take advantage of user manual updates. You can also have a look at the complete range of Hercules products and find out about forthcoming releases.