

CONTENTS

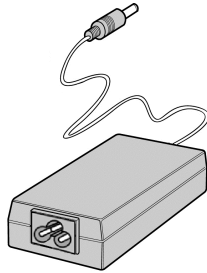
1. INTRODUCTION	2
2. FEATURES	3
3. CONNECTING YOUR PROPHETVIEW 720.....	4
4. DRIVER INSTALLATION.....	5
4.1. Driver installation for Windows 98.....	5
4.2. Driver installation for Windows Millennium	5
4.3. Driver installation for Windows 2000.....	6
5. OSD MENU FUNCTIONS	7
5.1. OSD buttons	7
5.2. Auto-adjust.....	7
5.3. Brightness setting	7
5.4. Main menu	8
6. RECOMMENDED USE	9
7. TECHNICAL SPECIFICATIONS.....	10
8. TROUBLESHOOTING	11
9. TECHNICAL SUPPORT.....	12
9.1. If you need to return a product.....	12

1. INTRODUCTION

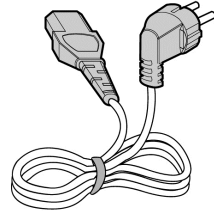
Your Prophetview 720 box contains the following:



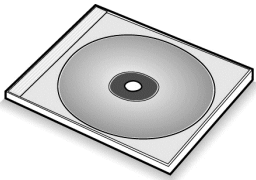
TFT-LCD monitor



AC power adapter



Power cord



Installation CD-ROM



User manual

2. FEATURES

The HERCULES Prophetview 720 is a high quality, 15-inch TFT-LCD (Thin Film Transistor - Liquid Crystal Display) monitor that works in conjunction with standard VGA graphics boards.

Your Prophetview 720 offers a large display area and is suitable for use as a 17" class monitor, at a recommended resolution of 1024x768 pixels.

Distortion-free and unsusceptible to electromagnetic interference, the Prophetview 720's sharp, lifelike picture, wide viewing angle and space-saving design make it the ultimate monitor for home or business users!

➤ **TFT-LCD monitor**

The Prophetview 720's sleek 15-inch LCD panel (equivalent to a 17-inch CRT monitor) takes up very little space on your desktop, leaving more room available for other peripheral devices.

Desk space can now be used more efficiently than ever, thanks to the panel's impressive depth of only 2cm (14cm with stand)!

➤ **Plug and Play compatible**

Your Prophetview 720 conforms to the VESA (Video Electronics Standards Association) standard and DDC1/2B. The picture adjustment function allows the image quality to be adjusted to match the input signal.

➤ **Low power consumption**

Your Prophetview 720 features very low power consumption (<30W in power on mode, <4W in standby mode) and auto power switch (100~240V).

➤ **Easy-to-use On-Screen Display (OSD) menu**

Your monitor's display is easily configurable using the OSD menu and its 4-button system. You may either use the auto-adjust function or manually adjust the advanced settings.

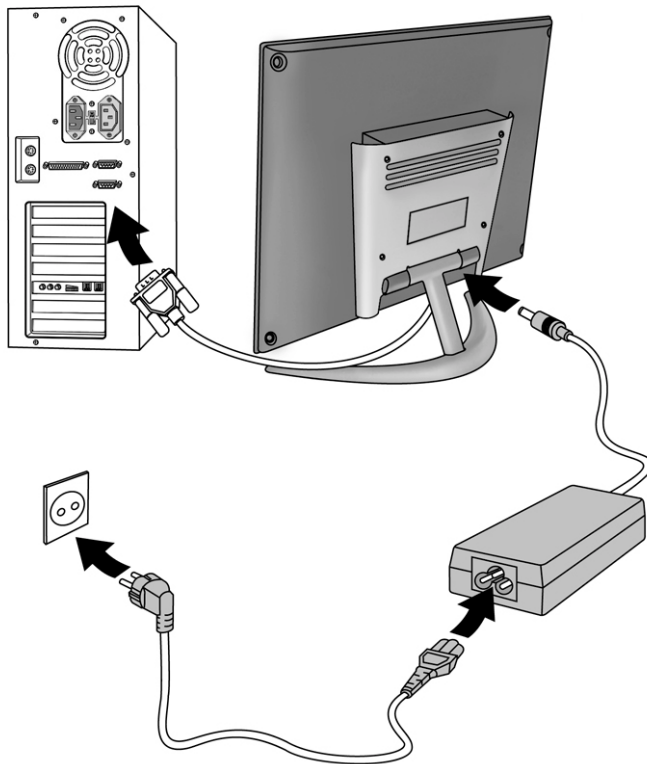
➤ **Environmentally friendly**


Power consumption can be reduced by using your monitor in combination with a computer that conforms to the VESA DPMS (Display Power Management Signalling) standard.

State	Power indicator	Power consumption
Power on	Green	<30W
Standby	Amber	<4W
Deep Sleep	No light	<3W

3. CONNECTING YOUR PROPHETVIEW 720

To connect your Prophetview 720 to your system, follow the instructions below:



- First of all, turn off your computer and unplug its power cord.
- You may also need to disconnect your previous monitor from your system.
- Connect the 15-pin D-sub signal cable to your computer's graphics board. Tighten all screws.
- Connect the AC adapter cable to the power terminal at the back of the monitor base.
- Connect the power cord to the AC adapter.
- Connect your computer and monitor's power cords to available electrical outlets.
- Now turn on your computer and monitor (for the latter, by pressing the  button).

Your Prophetview 720 is now ready for use.

4. DRIVER INSTALLATION

4.1. Driver installation for Windows 98



Windows will display a **New Hardware Found** dialog box informing you that the system has found a **Plug and Play Monitor**.

- Insert the installation CD-ROM into your CD-ROM drive.
- Click on **Next**.

The *Add New Hardware Wizard* will suggest a **Search for the best driver for your device. (Recommended)**.

- Click on **Next**.



The wizard will ask you for the path of the driver.

- Tick the **CD-ROM drive** option.
- Click on **Next**.

The wizard will then display the name of your monitor.

- Click on **Next** to start driver installation.
- Click on **Finish**.

4.2. Driver installation for Windows Millennium



Windows will display a **New Hardware Found** dialog box informing you that the system has found a **Plug and Play Monitor**.

- Insert the installation CD-ROM into your CD-ROM drive.
- Click on **Next**.

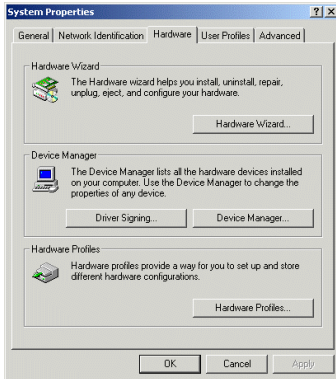
The *Add New Hardware Wizard* will suggest an **Automatic search for a better driver (Recommended)**.

- Click on **Next**.

Windows will then specify the path and the name of the folder where the drivers are located.

- Click on **Next** to start driver installation.
- Click on **Finish**.

4.3. Driver installation for Windows 2000



Windows 2000 uses default drivers for your monitor. You therefore need to replace the Windows default drivers by the Hercules drivers.

- Right-click on **My Computer** and click on **Properties**.
- Select the **Hardware** tab and click on **Device Manager...**
- Click on the + sign to the left of **Monitors**.
- Double-click on your monitor.
- Select the **Driver** tab and click on **Update Driver...**
- Insert the installation CD-ROM into your CD-ROM drive.
- Click on **Next**.

The Add New Hardware Wizard will suggest a **Search for a suitable driver for my device (recommended)**.

- Click on **Next**.

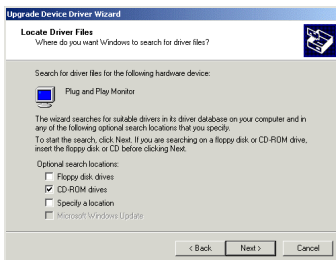


The wizard will ask you for the path of the driver.

- Tick the **CD-ROM drive** option.
- Click on **Next**.

Windows may inform you that other compatible drivers have been detected.

- Click on **Next** to install your optimized Hercules drivers.
- Click on **Finish**.



5. OSD MENU FUNCTIONS

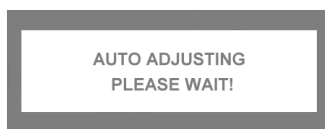
5.1. OSD buttons

The OSD menu allows you to apply customized settings to your display. The OSD buttons have the following functions:

⊙	Default function	Auto-adjust.
	OSD function	Selects OSD icon above.
⊙	Default function	Displays the OSD main menu.
	OSD function	Selects OSD icon below.
⊕	Default function	Displays the BRIGHTNESS setting and increases brightness value.
	OSD function	Increases value for highlighted item.
⊖	Default function	Displays the BRIGHTNESS setting and decreases brightness value.
	OSD function	Decreases value for highlighted item.

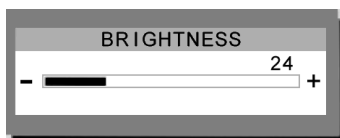
5.2. Auto-adjust

Press the ⊙ button to automatically adjust the following display parameters: horizontal and vertical position, phase and frequency.




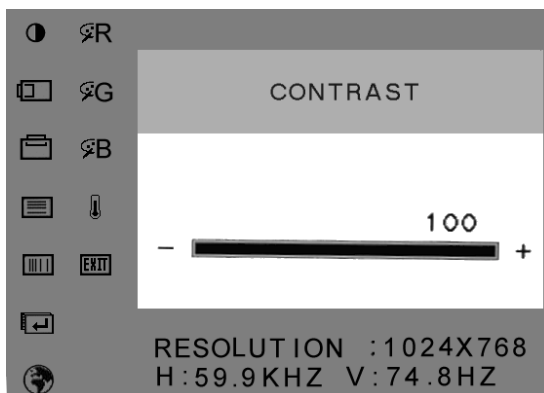
5.3. Brightness setting








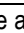









Press either the ⊕ or ⊖ button to display the **BRIGHTNESS** setting. Now adjust the brightness by using the ⊕ and ⊖ buttons.



5.4. Main menu

Press the  button to display the OSD main menu. The OSD menu automatically saves any changes and disappears when no button has been pressed for 10 seconds.



	Adjusts screen contrast.
	Adjusts the horizontal image position.
	Adjusts the vertical image position.
	Adjusts the focus of the display. Alter this setting if characters pile up on each other.
	Adjusts the screen's horizontal size by increasing or reducing the number of pixels in steps.
	Restores default settings.
	Select a language among the five available using the  button, then press the  button. The OSD menu is now displayed in the language you have selected.
	Adjusts red color gain.
	Adjusts green color gain.
	Adjusts blue color gain.
	High temperatures mean cool colors (blue, green, purple), whereas low temperatures mean warm colors (red, yellow, orange). Four settings are available: 9300K (screen image is bluish), 6500K (screen image is reddish), USER (selects the parameters set in the  ,  and  options), AUTO (auto-adjust function dedicated to RGB values).
	Closes the OSD menu.

6. RECOMMENDED USE

For optimum performance, please note the following when setting up and using your Prophetview 720:

- Tilt the screen forwards or backwards at an angle, so that it does not reflect any light into your eyes.
- Do not open up your monitor. Opening or removing the cover may expose you to dangerous shock hazards or other risks. Warning: warranty is void if the monitor has been opened.
- Unplug the monitor's power cord and disconnect it from your computer before cleaning. Do not use liquid or aerosol cleaners. Use a damp cloth for cleaning.
- Avoid using the Prophetview 720 in extreme heat or humidity, as this may cause color loss or damage.
- Place the Prophetview 720 on a flat surface to prevent it from falling.
- Install the Prophetview 720 in a well-ventilated room, and do not cover the ventilation openings.
- Do not expose the Prophetview 720 to fluids, such as chemicals, liquids or water.
- Turn off both the Prophetview 720 and your computer before connecting or disconnecting the D-Sub signal cable.
- To protect the monitor during electrical storms or when it is left unattended and unused for long periods of time, disconnect it from your computer and unplug its power cord. This will prevent damage to the monitor from lightning and power surges.
- Handle your Prophetview 720 with care during transportation. Make sure to save the packaging materials, in case it needs to be transported in future.

7. TECHNICAL SPECIFICATIONS

LCD MODULE	Size: Display type: Number of pixels: Color depth: Pixel pitch: Brightness: Contrast ratio: Response time: Backlight unit:	15" (38.1cm) Color TFT LCD Active Matrix 1024x768 (2.36 million sub-pixels) 16.7 million colors 0.29x0.29mm 230Cd/m ² 300:1 <30ms 2 CCFL lamps
CABINET	Color:	Blue fashionable design
STAND CONTROL	Backward tilt: Forward tilt:	20 degrees -5 degrees
VIEWING ANGLE	Wide v. a. technique: Horizontal: Vertical:	Compensation film Right/left +140 degrees Up/down +110 degrees
FREQUENCY	Horizontal scan: Vertical scan:	30~75kHz 50~75Hz
AUTO ADJUSTMENT SCREEN IMAGE	640x350 640x400 640x480 720x400 800x600 832x624 1024x768	70Hz 70Hz 60Hz, 72Hz, 75Hz 70Hz 60Hz, 72Hz, 75Hz 75Hz 60Hz, 70Hz, 75Hz, 75Hz (Mac)
COMMUNICATION	Plug & Play	DDC1/2B (Windows 95/98/NT/2000)
INPUT SIGNAL	Signal level: Synchronization: VGA compatibility:	RGB analog 0.7Vpp/75ohm H/V Separate (TTL) VESA VGA / SVGA / XGA, MACII, PC98
ENVIRONMENTAL CONDITIONS	Operating temp.: Operating humidity:	0~40°C Less than 80%
POWER	Power input: Power adapter: Power consumption: Power management:	AC 100-240V, 50/60Hz (auto-adjusting) 12V DC, 2.0A 24W Standby mode: less than 4W
SAFETY & REGULATIONS	Safety: EMC:	IEC950, UL1950, CB, CE-LVD, TUV-GS FCC Class B, CE
DIMENSION	WxHxD:	378x285x20mm
WEIGHT	Set: Box:	3.5kg 4.5kg

8. TROUBLESHOOTING

No image on screen

- The signal cable should be firmly connected to the graphics board.
- Your monitor's power button and your computer's power switch should both be in the ON position.
- Check the signal cable connectors for bent or pushed-in pins.

LED on monitor is amber (and no image on screen)

- The signal cable should be firmly connected to the graphics board.
- Make sure your computer is not in standby mode (hit a key or move the mouse to exit this mode).

LED on monitor is green (and no image on screen)

Adjust brightness and contrast settings in the OSD menu.

“SIGNAL OVER RANGE” displayed on screen

After having checked your graphics board specifications, select another vertical frequency between 60 and 75Hz.

“RGB NO INPUT SIGNAL!” displayed on screen

Check the D-Sub signal cable, and make sure that it is connected firmly.

Display is not clear

- Adjust the **PHASE** and **FREQUENCY** settings in the OSD menu.
- Select the recommended screen settings: 1024x768 @ 60Hz.

Display is not sized properly

- Use the OSD menu to increase or decrease **HORIZONTAL** and **VERTICAL POSITION**.
- Make sure that a supported mode and signal timing have been selected on the graphics board and the system being used. (Please refer to your graphics board or system manuals to change the display mode or refresh rate.)

9. TECHNICAL SUPPORT

Before you contact us (*), please have the following information/items ready:

- Product name,
- Date of purchase of your product,
- Your full system configuration details: processor type, memory, operating system,
- Pen and paper.

Please have your computer switched on and ready at the point where you have encountered a problem.

9.1. If you need to return a product

Hercules offers a standard three year parts & service warranty.

To return a product for factory service, contact a Hercules technical support representative at the phone number corresponding to the country you live in (*).

In Europe: after receiving confirmation from our technical support service (*) that your product is defective, please follow the instructions we provide to have your product replaced directly by our services.

In the USA and Canada: refund policies apply to products purchased directly from Hercules (30 days). All customers should register online at our web site. Just visit <http://us.hercules.com>, click on **Support/Drivers** and **Registration**. You will be added to the mailing list to receive upgrade information, information on new products and special offers.

Note: only packages that have been assigned an RMA (Return Merchandise Authorization) number by a technical support agent will be accepted.

When returning the product, be sure to include all materials, such as the manual(s), connection cable(s) and the product packaging box.

(*) Hotline details are listed at the end of this manual.

Trademarks

Hercules®, Guillemot™ and Prophetview™ are trademarks and/or registered trademarks of Guillemot Corporation S.A. VESA®, DPMS™ and DDC™ are trademarks and/or registered trademarks of Video Electronics Standards Association. Microsoft® Windows® 95, 98, Millennium, 2000, Windows NT® and MS-DOS® are registered trademarks of Microsoft Corporation in the United States and/or other countries. All other nationally and internationally recognized trademarks and trade names are hereby acknowledged. Photos not binding.

Declaration of conformity

USA COMPLIANCE NOTICE: this device complies with the limits for a Class B computing device according to Subpart J or Part 15 of the FCC rules.

COMPLIANCE NOTICE FOR CANADA: this Class B peripheral apparatus meets all requirements of the Canadian Interference-Causing Equipment Regulations.

EC COMPLIANCE NOTICE: the test report was made in accordance with the procedures set out in European Council Directive 89/336/EEC for a Class B digital device. In a domestic environment this product may cause radio interference in which case the user may be required to take adequate measures.

Copyright

Copyright © Guillemot Corporation and Hercules Technologies 2001. All rights reserved.

This publication may not be reproduced in whole or in part, summarized, transmitted, transcribed, stored in a retrieval system, or translated into any language or computer language, in any form or by any means, electronic, mechanical, magnetic, photocopying, recording, manual or otherwise, without the prior written permission of Guillemot Corporation and Hercules Technologies.

Disclaimer

Hercules Technologies reserves the right to make changes in specifications at any time and without notice. The information provided by this document is believed to be accurate and reliable. However, no responsibility is assumed by Hercules Technologies or Guillemot Corporation either for its use or for the infringement of patents or other rights of third parties resulting from its use. This product may exist in a light or special version for PC integration or other purposes. Certain functions detailed in this manual may not be available in these versions. Wherever possible, a **README.TXT** will be included on the installation CD-ROM detailing the differences between the supplied product and the product described in the present documentation.

End-user software license Agreement

IMPORTANT: please read the Agreement carefully prior to opening and installing the software. By opening the software package, you agree to be bound by the terms of this Agreement. The Software enclosed in this package is licensed, not sold, and is only available under the terms of the present license Agreement. If you do not agree with the terms hereafter, you must promptly return the Software within 15 days, together with the entire contents of the box, to the place of purchase.

The Hercules Technologies/Guillemot Corporation software (hereafter named the "Software") is copyrighted by Hercules Technologies and/or Guillemot Corporation. All rights are reserved. The term "Software" refers to all documentation and related material, including drivers, executable programs, libraries and data files. The purchaser is granted a license to use the Software only. The licensee also agrees to be bound by the terms and conditions of the present Agreement concerning copyright and all other proprietary rights for any third party software, documentation and related material included in the software package.

Hercules Technologies reserves the right to terminate this license in the event of failure to comply with any of the terms or conditions laid out in the present Agreement. On termination, all copies of the Software shall immediately be returned to Hercules Technologies; the purchaser remaining liable for any and all resulting damages.

License:

1. The license is granted to the original purchaser only. Hercules Technologies and/or Guillemot Corporation retain all title to and ownership of the Software and reserve all rights not expressly granted. The licensee is not permitted to sub-license or lease any of the rights that are hereby granted. Transfer of the license is permitted, provided that the transferor does not retain any part or copy of the Software and the transferee accepts to be bound by the terms and conditions of the present Agreement.
2. The licensee may only use the Software on a single computer at any time. The machine-readable portion of the Software may be transferred to another computer provided it is previously erased from the first machine and there is no possibility that the Software can be used on more than one machine at any one time.
3. The licensee acknowledges the copyright protection belonging to Hercules Technologies and/or Guillemot Corporation. The copyright notice must not be removed from the Software, nor from any copy thereof, nor from any documentation, written or electronic, accompanying the Software.
4. The licensee is granted the right to make one back-up copy of the machine-readable portion of the Software on the condition that all copyright and proprietary notices are also reproduced.
5. Except where the present Agreement expressly permits, the licensee is strictly prohibited from engaging in, nor may he permit third parties to engage in, the following: providing or disclosing the Software to third parties; providing use of the Software in a network, multiple PCs, multi-user or time-sharing arrangement where the users are not individual licensees; making alterations or copies of any kind of the Software; making any attempt to disassemble, de-compile or reverse engineer the Software in any way or form, or engaging in any activity aimed at obtaining underlying information not visible to the user during normal use of the Software; making copies or translations of the User Manual.

Warranty

Prophetview 720 comes with a standard three year parts and service warranty from the date of purchase. Hercules Technologies' entire liability and your exclusive remedy is limited to the replacement of defective products. The warranty does not cover a decline in the luminosity of liquid crystal displays, a normal occurrence due to the passage of time. Likewise, the warranty does not cover the non-display of pixels, up to a limit of 6 defective pixels. In no event shall Hercules Technologies be liable to you or any third party for direct or indirect consequential, incidental or special damages which you may incur as a result of using the software, including, but not limited to, loss of data, or information of any kind, that you may experience.

