

# CONTENTS

<b>1. FEATURES</b> .....	<b>2</b>
<b>2. RECOMMENDED USE</b> .....	<b>3</b>
<b>3. CONNECTING YOUR PROPHETVIEW 920</b> .....	<b>4</b>
3.1. Connecting to a PC .....	4
3.1.1. <i>Prophetview 920</i> .....	4
3.1.2. <i>Prophetview 920DVi</i> .....	5
3.2. Connecting to a video device (Prophetview 920DVi only) .....	5
<b>4. DRIVER INSTALLATION</b> .....	<b>6</b>
4.1. Driver installation for Windows 98 .....	6
4.2. Driver installation for Windows Millennium.....	6
4.3. Driver installation for Windows 2000 .....	7
4.4. Driver installation for Windows XP .....	8
<b>5. OSD MENU FUNCTIONS</b> .....	<b>9</b>
5.1. OSD buttons .....	9
5.2. Auto-adjust .....	9
5.3. Brightness setting .....	9
5.4. Main menu .....	10
5.5. Selecting the video signal (Prophetview 920DVi only).....	11
<b>6. HARDWARE OPTIONS</b> .....	<b>12</b>
6.1. Anti-theft device.....	12
6.2. Wall mounting.....	12
<b>7. TECHNICAL SPECIFICATIONS</b> .....	<b>13</b>
<b>8. TROUBLESHOOTING</b> .....	<b>14</b>
<b>9. TECHNICAL SUPPORT</b> .....	<b>15</b>
9.1. If you need to return a product .....	15
9.2. Save time by registering your product online! .....	15

ENGLISH

DEUTSCH

ESPAÑOL

PORTUGUÊS

FRAANÇAIS

ITALIANO

NEderland

HOTLINE

## 1. FEATURES

The HERCULES Prophetview 920 is a high quality, 17-inch TFT-LCD (Thin Film Transistor – Liquid Crystal Display) monitor that works in conjunction with VGA graphics boards (and DVI graphics boards for the Prophetview 920DVi).

Your Prophetview 920 offers a large display area and is suitable for use as a 19-inch class monitor, at a recommended resolution of 1280x1024 pixels.

Distortion-free and unsusceptible to electromagnetic interference, the Prophetview 920's sharp, lifelike picture, wide viewing angle and space-saving design make it the ultimate monitor for home or business users!

- **TFT-LCD monitor**

The Prophetview 920's sleek 17-inch LCD panel (equivalent to a 19-inch CRT monitor) takes up very little space on your desktop, leaving more room available for other peripheral devices. Desk space can now be used more efficiently than ever, thanks to the panel's impressive depth of only 28mm!

- **Plug and Play compatible**

Your Prophetview 920 conforms to the VESA (Video Electronics Standards Association) and DDC1/2B standards. The picture adjustment function allows the image quality to be adjusted to match the input signal.

- **Low power consumption**

Your Prophetview 920 features very low power consumption (<35W in power on mode, <4W in standby mode) and auto power switch (90~264V).

- **Easy-to-use On-Screen Display (OSD) menu**

Your monitor's display is easily configurable using the OSD menu and its 4-button system. You may either use the auto-adjust function or manually adjust the advanced settings.

- **Environmentally friendly**

As the Prophetview 920 is TCO95 compliant, power consumption can be reduced by using your monitor in combination with a computer that conforms to the VESA DPMS (Display Power Management Signaling) standard.

<b>Mode</b>	<b>Power indicator</b>	<b>Power consumption</b>
Power on	Green	<35W
Standby	Amber	<4W
Deep sleep	No light	<4W

## 2. RECOMMENDED USE

For optimum performance, please note the following when setting up and using your Prophetview 920:

- Do not open up your Prophetview 920. Opening or removing the cover may expose you to dangerous shock hazards or other risks. **Warning: warranty is void if the monitor has been opened.**
- Unplug the monitor's power cord and disconnect it from your computer before cleaning. Do not use liquid or aerosol cleaners. Use a damp cloth for cleaning.
- Avoid using your Prophetview 920 in extreme heat or humidity, as this may cause color loss or damage.
- Place your Prophetview 920 on a flat surface to prevent it from falling.
- Install your Prophetview 920 in a well-ventilated room, and do not cover the ventilation openings.
- Keep all liquids and chemicals away from your Prophetview 920.
- Switch off both your Prophetview 920 and your computer before connecting or disconnecting the video cable (either VGA or DVI according to the version of your monitor).
- To protect your Prophetview 920 during electrical storms, disconnect it from your computer and unplug its power cord. This will prevent it from being damaged by lightning or power surges.
- Handle your Prophetview 920 with care when moving it. Make sure that you keep hold of all packaging materials, in case you need to transport your Prophetview 920 in the future.

ENGLISH

DEUTSCH

ESPAÑOL

PORTUGUÊS

FRANÇAIS

ITALIANO

NEDERLAND

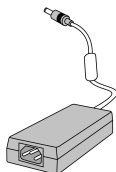
HOTLINE

## 3. CONNECTING YOUR PROPHETVIEW 920

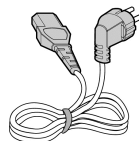
Remove your Prophetview 920 from its packaging along with the various different elements required for installation:



TFT-LCD monitor



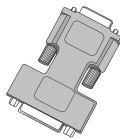
AC power adapter



Power cord



Installation CD-ROM

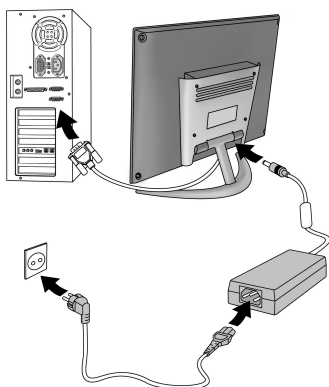



DVI / VGA adaptor  
(Prophetview 920DVi only)

### 3.1. Connecting to a PC

- Switch off your computer.
- You may also need to disconnect your previous monitor from the system.

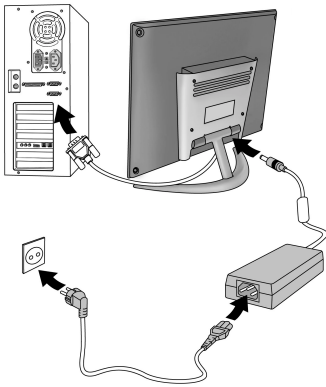
#### 3.1.1. Prophetview 920



- Connect the VGA cable to the VGA output on your graphics board.
- Connect the AC adapter cable to the power terminal at the back of the monitor base.
- Connect the power cord to the AC adapter.
- Plug in the monitor's power cord.
- Switch on your computer and monitor (for the latter, by pressing the  button).


Your Prophetview 920 is now ready for use.

### 3.1.2. Prophetview 920DVi



- Connect the DVI cable to the DVI output on your graphics board.

#### **If you wish to connect the Prophetview 920DVi to a VGA output:**

- Connect the supplied DVI / VGA adaptor to the DVI cable.
- Connect the DVI / VGA adapter to the VGA output on your graphics board.
- Connect the AC adapter cable to the power terminal at the back of the monitor base.
- Connect the power cord to the AC adapter.
- Plug in the monitor's power cord.
- Switch on your computer and monitor (for the latter, by pressing the  button).

*Your Prophetview 920DVi is now ready for use.*

## 3.2. Connecting to a video device (Prophetview 920DVi only)

You can connect other video devices, such as a games console or camcorder, to your Prophetview 920DVi via the composite video input.

- Connect the video device to the composite video input at the back of the monitor base (connection cable not supplied).
- Switch on your video device.

Refer to section [Selecting the video signal](#) for more information about activating the composite video input on your Prophetview 920DVi.

## 4. DRIVER INSTALLATION

### 4.1. Driver installation for Windows 98

Windows will display an **Add New Hardware Wizard** dialog box informing you that the system has found a **Plug and Play Monitor**.

- Insert the installation CD-ROM into your CD-ROM drive.
- Click on **Next**.



The wizard will suggest a **Search for the best driver for your device. (Recommended)**.

- Click on **Next**.

The wizard will ask you for the path of the driver.

- Enable the **CD-ROM drive** option.
- Click on **Next**.



Windows will inform you that it has detected other compatible drivers.

- Click on **Next**.

The wizard will then display the name of your monitor.

- Click on **Next** to start the driver installation.
- Click on **Finish** to complete the setup.

### 4.2. Driver installation for Windows Millennium



Windows will display an **Add New Hardware Wizard** dialog box informing you that the system has found a **Plug and Play Monitor**. The wizard will suggest an **Automatic search for a better driver (Recommended)**.

- Insert the installation CD-ROM into your CD-ROM drive.
- Click on **Next**.

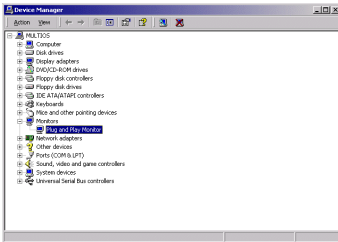
The **Select Other Driver** dialog box appears.

- Click on **OK**.
- Click on **Finish** to complete the setup.

### 4.3. Driver installation for Windows 2000

Windows 2000 uses default drivers for your monitor. You must therefore replace these standard drivers with Hercules drivers.

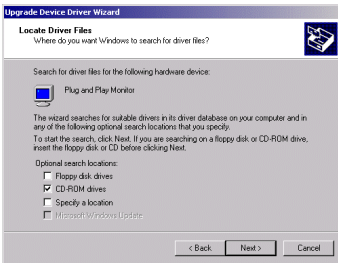
- Click on **Start/Settings/Control Panel**.
- Double-click on the **System** icon.
- Select the **Hardware** tab.
- Click on **Device Manager...**



- Click on the **+** sign to the left of **Monitors**.
- Double-click on **Plug and Play Monitor**.
- Select the **Driver** tab.
- Click on **Update Driver...**
- Click on **Next**.

*The wizard will suggest a Search for a suitable driver for my device (recommended).*

- Click on **Next**.



*The wizard will then prompt you to designate an optional search location.*

- Enable the **CD-ROM drives** option.
- Insert the installation CD-ROM into your CD-ROM drive.

**If the Prophetview 920 installation menu appears:**

- Close it by clicking on **xl**

- Click on **Next**.

*Windows will then specify the path and name of the folder where the drivers are located.*

- Click on **Next** to continue the driver installation.

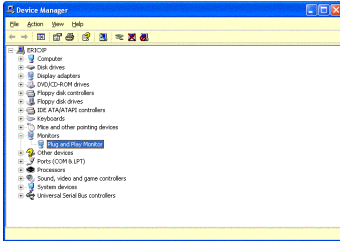


*The Digital Signature Not Found dialog box appears.*

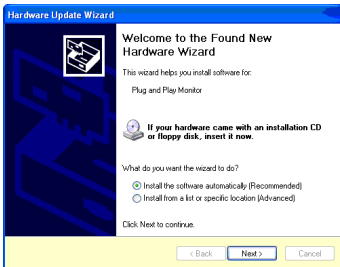
- Click on **Yes**.
- Click on **Finish** to complete the setup.

## 4.4. Driver installation for Windows XP

Windows XP uses default drivers for your monitor. You must therefore replace these standard drivers with Hercules drivers.



- Click on **Start/Control Panel**.
- Double-click on the **System** icon.
- Select the **Hardware** tab.
- Click on **Device Manager**.
- Click on the **+** sign to the left of **Monitors**.
- Double-click on **Plug and Play Monitor**.
- Select the **Driver** tab.
- Click on **Update Driver...**



*The wizard will suggest that you Install the software automatically (Recommended).*

- Insert the installation CD-ROM into your CD-ROM drive.

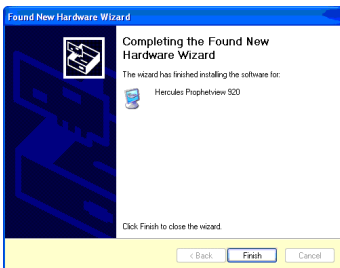
*The drivers will be installed automatically after a few seconds.*

### If the drivers are not installed automatically:

- Click on **Next**.

### If the Prophetview 920 installation menu appears:

- Close it by clicking on xl.



*Windows may display a Hardware Installation warning.*

- Click on **Continue anyway**.
- Click on **Finish** to complete the setup.



## 5. OSD MENU FUNCTIONS

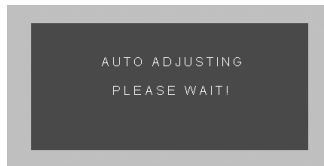
### 5.1. OSD buttons

The OSD menu allows you to apply customized settings to your display. The OSD buttons have the following functions:

⌚	Default function	Auto-adjust.
	OSD function	Selects OSD icon above.
⌚	Default function	Displays the OSD main menu.
	OSD function	Selects OSD icon below.
⊕	Default function	Displays the <b>BRIGHTNESS</b> setting and increases the brightness value.
	OSD function	Increases value for highlighted item.
⊖	Default function	Displays the <b>BRIGHTNESS</b> setting and decreases the brightness value.
	OSD function	Decreases value for highlighted item.

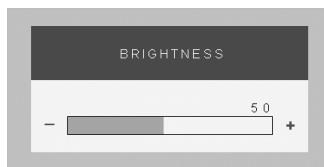
### 5.2. Auto-adjust

Press the ⌚ button to automatically adjust the following display parameters: horizontal and vertical position, phase and frequency.




### 5.3. Brightness setting

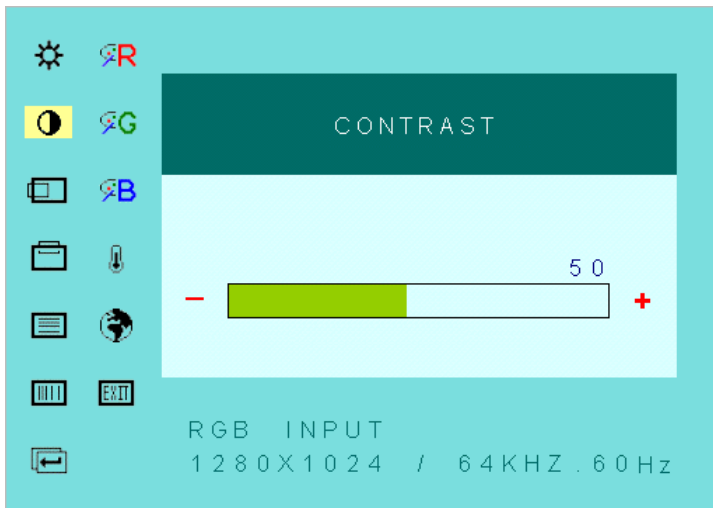
Press either the ⊕ or ⊖ button to display the **BRIGHTNESS** setting. Now adjust the brightness by using the ⊕ and ⊖ buttons.








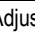

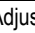

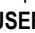
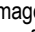
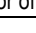






## 5.4. Main menu

Press the  button to display the OSD main menu. The OSD menu automatically saves any changes and disappears if no button is pressed within 10 seconds.

Note on the Prophetview 920DVi: the options available on the OSD menu vary according to which video input has been activated.



	Adjusts brightness.
	Adjusts screen contrast.
 *	Adjusts the horizontal image position.
 *	Adjusts the vertical image position.
 *	Adjusts the focus of the display. Alter this setting if characters pile up on each other.
 *	Adjusts the screen's horizontal size by increasing or reducing the number of pixels.
	Restores default settings.
 *	Adjusts red color gain.
 *	Adjusts green color gain.
 *	Adjusts blue color gain.
 **	High temperatures mean cool colors (blue, green, purple), whereas low temperatures mean warm colors (red, yellow, orange). Four settings are available: <b>USER</b> (customized adjustment of the  ,  and  options), <b>9300K</b> (screen image is bluish), <b>6500K</b> (screen image is reddish) and <b>OFFICE</b> (optimized display for office use).

	Select a language from among the five available using the ⊕ or ⊖ button, and then press the ⌂ or ✓ button. The OSD menu is now displayed in the language you have selected.
	Selects a video signal: DVI, VGA or composite video (Prophetview 920DVi only).
	Closes the OSD menu.
 ***	Adjusts image saturation.


\* Option only available with VGA input.

\*\* Option only available with VGA and composite video inputs.

\*\*\* Option only available with composite video input.

## 5.5. Selecting the video signal (Prophetview 920DVi only)

Your Prophetview 920DVi can receive either a DVI or VGA-type video signal (via the video cable) or a composite video signal (via the composite video input). As it is impossible to display several signals at once, you need to select the input that you wish to use. To do this:

- Press the ⌂ button to display the OSD main menu.
- Select the  icon.
- Select the input you require (**DVI** if your Prophetview 920DVi is connected to the DVI output of your graphics board, **RGB** if your Prophetview 920DVi is connected to the VGA output of your graphics board or **VIDEO** if you have connected a video device to the composite video input) using the ⊕ or ⊖ button.

*The display then switches to the selected video signal.*

ENGLISH

DEUTSCH

ESPAÑOL

PORTUGUÊS

FRANÇAIS

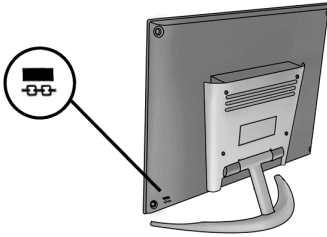
ITALIANO

NEderland

HOTLINE

## 6. HARDWARE OPTIONS

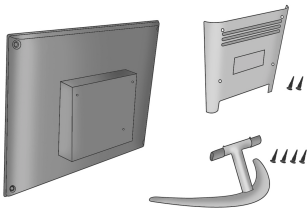
### 6.1. Anti-theft device



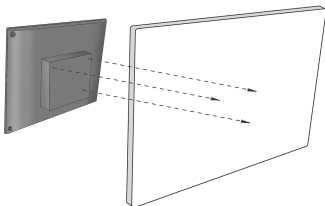
Protect your Prophetview 920 against theft with an adapted security device (not supplied). Refer to your security device documentation for installation instructions.


### 6.2. Wall mounting

Your Prophetview 920 can be attached to a wall or an articulated arm to free up desk space (only 28mm deep).



- Switch off your computer and Prophetview 920 and disconnect the power cords.
- Unplug the video cable.
- Unscrew the 2 screws holding the metal plate in place on the back of the monitor.
- Unscrew the 4 screws attaching the monitor base.



- Fix your Prophetview 920 to the wall (or to an articulated arm) via the 3 attachment holes (screws not supplied).
- Plug the video cable back in.
- Reconnect the computer and Prophetview 920 power cords.
- Switch on your computer and monitor (for the latter, by pressing the  button).

*Your Prophetview 920 is now ready for use.*

## 7. TECHNICAL SPECIFICATIONS

LCD MODULE	Size: Display type: Number of pixels: Color depth: Pixel pitch: Brightness: Contrast ratio: Response time: Backlight unit:	17" (43.2cm) Color TFT LCD Active Matrix 1280x1024 16.7 million colors 0.264x0.264mm 250Cd/m <sup>2</sup> 350:1 <25ms 4 CCFL lamps
CABINET	Color:	Blue fashionable design
STAND CONTROL	Backward tilt: Forward tilt:	20 degrees -2 degrees
VIEWING ANGLE	Wide v. a. technique: Horizontal: Vertical:	Compensation film 150 degrees 130 degrees
FREQUENCY	Horizontal scan: Vertical scan:	30~80kHz 50~85Hz
AUTO ADJUSTMENT SCREEN IMAGE	640x480 720x400 800x600 1024x768 1280x1024	60Hz, 72Hz, 75Hz 70Hz 60Hz, 72Hz, 75Hz 60Hz, 70Hz, 75Hz 60Hz, 70Hz, 75Hz
COMMUNICATION	Plug & Play	DDC1/2B (Windows)
INPUT SIGNAL	Signal level: Synchronization: VGA compatibility:	RGB analog 0.7Vpp/75Ω H/V Separate (TTL) VESA VGA / SVGA / XGA, MACII, PC99
ENVIRONMENTAL CONDITIONS	Operating temperature: Operating humidity:	0~40°C Less than 85%
POWER	Power input: Power adapter: Power consumption: Power management:	AC 90-264V, 50/60Hz (auto-adjusting) 12V DC Less than 35W Standby mode: less than 4W
SAFETY & REGULATIONS	Safety: EMC:	IEC950, UL1950, CSA, CE-LVD, TUV-GS FCC Class B, CE, TCO95
DIMENSIONS	WxHxD:	435x338x28mm
WEIGHT	Set: Box:	5.6kg 7.7kg

ENGLISH

DEUTSCH

ESPAÑOL

PORTUGUÊS

FRANÇAIS

ITALIANO

NEderland

HOTLINE

## 8. TROUBLESHOOTING

### **There is no image on the screen**

- Make sure that the video cable is correctly connected to the graphics board.
- Make sure that the power button on your monitor and the power switch on your computer are both in the ON position.
- Check the signal cable connectors for bent or pushed-in pins.

### **LED on monitor is amber (and no image on screen)**

- Make sure that the video cable is correctly connected to the graphics board.
- Make sure that your computer is not in standby mode (hit a key or move the mouse to exit this mode).

### **LED on monitor is green (and no image on screen)**

Adjust the brightness and contrast settings in the OSD menu.

### **The message “SIGNAL OVER RANGE” is displayed on the screen**

Check your graphics board specifications and select a vertical frequency between 60 and 85Hz.

### **The message “RGB NO INPUT SIGNAL” is displayed on the screen**

Make sure that the video cable is correctly connected to the graphics board.

### **Display is not clear**

- Adjust the **PHASE** and **FREQUENCY** settings in the OSD menu.
- Select the recommended screen settings: 1280x1024 @ 60Hz.

### **Display is not centered on screen**

- Use the OSD menu to increase or decrease **HORIZONTAL** and **VERTICAL POSITION**.
- Make sure that your system's display settings are compatible with your Prophetview 920. (Please refer to your graphics board or operating system manuals to change the resolution or refresh rate.)

## 9. TECHNICAL SUPPORT

Before you contact us (\*), please have the following information/items ready:

- Product name,
- Date of purchase of your product,
- Your full system configuration details: processor type, memory, operating system,
- Pen and paper.

Please have your computer switched on and ready at the point where you have encountered a problem.

### 9.1. If you need to return a product

Hercules offers a standard 3 year parts & service warranty.

1. To return a product for factory service, contact a Hercules technical support representative at the phone number corresponding to the country you live in (\*).
  - **In the United Kingdom:** before taking any action, please contact our Technical Support Dept. on **020 7216 0047** or by email at **hercules.uk@guillemotsupport.com** who will be able to advise you as to the best possible solution.
  - **In Continental Europe, Australia and New Zealand:** after receiving confirmation from our technical support service (\*) that your product is defective, please follow the instructions we provide to have your product replaced.
  - **In the USA and Canada:** refund policies apply to products purchased directly from Hercules (30 days).
2. When returning the product, be sure to include all materials, such as the manual(s), connection cable(s), installation CD(s) and the product packaging box. **Note: only packages that have been assigned an RMA (Return Merchandise Authorization) number by a technical support agent will be accepted.**

(\*) Hotline details are listed at the end of this manual.

### 9.2. Save time by registering your product online!

**In Europe:** go directly to our website ([www.hercules-uk.com](http://www.hercules-uk.com)) and click on **Registration**. Registering with us in this way will simplify the process if you ever need to contact our technical support team. If you wish, you can also be added to our priority mailing list to receive information about our new Hercules products and our latest special offers.

**In the USA and Canada:** all customers should register online at our web site. Just visit [us.hercules.com](http://us.hercules.com), click on **Support/Drivers**, select your product and click on **Registration**. You will be added to the mailing list to receive upgrade information, information on new products and special offers.

## Trademarks

Hercules®, Guillemot™ and Prophetview™ are trademarks and/or registered trademarks of Guillemot Corporation S.A. VESA®, DPMS™ and DDC™ are trademarks and/or registered trademarks of Video Electronics Standards Association. Microsoft® Windows® 98, Millennium, 2000 and XP are either registered trademarks or trademarks of Microsoft Corporation in the United States and/or other countries. All other nationally or internationally recognized trademarks and trade names are hereby acknowledged. Illustrations not binding. Contents, designs and specifications are subject to change without notice and may vary from one country to another.

## Declaration of conformity

**EC COMPLIANCE NOTICE:** this equipment has been tested and found to comply with the limits of the Council Directive 89/336/EEC of 3 May 1989 on the approximation of the laws of the Member States relating to electromagnetic compatibility, amended by Directive 93/68/EEC. In a domestic environment this product may cause radio interference in which case the user may be required to take adequate measures. The use of shielded cables for connection of the monitor to the board is required to meet EC requirements.

**CANADIAN COMPLIANCE NOTICE:** this Class B digital apparatus meets all requirements of the Canadian Interference-Causing Equipment Regulations.

**USA COMPLIANCE NOTICE:** this equipment has been tested and found to comply with the limits for a Class B digital device, pursuant to Part 15 of the FCC rules. Operation is subject to the following two conditions:

- (1) This device may not cause harmful interference, and
- (2) This device must accept any interference received, including interference that may cause undesired operation.

These limits are designed to provide reasonable protection against harmful interference in a residential installation. This equipment generates, uses and can radiate radio frequency energy and, if not installed and used in accordance with the instructions, may cause harmful interference to radio communications. However, there is no guarantee that interference will not occur in a particular installation. If this equipment does cause harmful interference to radio or television reception, which can be determined by turning the equipment on and off, the user is encouraged to try to correct the interference by one or more of the following measures:

- Reorient or relocate the receiving antenna.
- Increase the separation between the equipment and receiver.
- Connect the equipment into an outlet on a circuit different from that to which the receiver is connected.
- Consult the dealer or an experienced radio/TV technician for help.

## Copyright

**Copyright © Guillemot Corporation and Hercules Technologies 2001-2002. All rights reserved.**

This publication may not be reproduced in whole or in part, summarized, transmitted, transcribed, stored in a retrieval system, or translated into any language or computer language, in any form or by any means, electronic, mechanical, magnetic, photocopying, recording, manual or otherwise, without the prior written permission of Guillemot Corporation and Hercules Technologies.

## Disclaimer

Hercules Technologies reserves the right to make changes to specifications at any time and without notice. The information provided by this document is believed to be accurate and reliable. However, no responsibility is assumed by Hercules Technologies or Guillemot Corporation either for its use or for the infringement of patents or other rights of third parties resulting from its use. This product may exist in a light or special version for PC integration or other purposes. Certain functions detailed in this manual may not be available in these versions. Wherever possible, a **README.TXT** will be included on the installation CD-ROM detailing the differences between the supplied product and the product described in the present documentation.

## End-user software license Agreement

**IMPORTANT:** please read the Agreement carefully prior to opening and installing the Software. By opening the Software package, you agree to be bound by the terms of this Agreement. The Software enclosed in this package is licensed, not sold, and is only available under the terms of the present license Agreement. If you do not agree with the terms hereafter, you must promptly return the Software within 15 days, together with the entire contents of the box, to the place of purchase.

The Hercules Technologies/Guillemot Corporation Software (hereafter named the "Software") is copyrighted by Hercules Technologies and/or Guillemot Corporation. All rights are reserved. The term "Software" refers to all documentation and related material, including drivers, executable programs, libraries and data files. The purchaser is granted a license to use the Software only. The licensee also agrees to be bound by the terms and conditions of the present Agreement concerning copyright and all other proprietary rights for any third party Software, documentation and related material included in the Software package.

**Hercules Technologies reserves the right to terminate this license in the event of failure to comply with any of the terms or conditions laid out in the present Agreement. On termination, all copies of the Software shall immediately be returned to Hercules Technologies; the purchaser remaining liable for any and all resulting damages.**

License:

1. The license is granted to the original purchaser only. Hercules Technologies and/or Guillemot Corporation retain all title to and ownership of the Software and reserve all rights not expressly granted. The licensee is not permitted to sub-license or lease any of the rights that are hereby granted. Transfer of the license is permitted, provided that the transferor does not retain any part or copy of the Software and the transferee accepts to be bound by the terms and conditions of the present Agreement.
2. The licensee may only use the Software on a single computer at any time. The machine-readable portion of the Software may be transferred to another computer provided it is previously erased from the first machine and there is no possibility that the Software can be used on more than one machine at any one time.
3. The licensee acknowledges the copyright protection belonging to Hercules Technologies and/or Guillemot Corporation. The copyright notice must not be removed from the Software, nor from any copy thereof, nor from any documentation, written or electronic, accompanying the Software.
4. The licensee is granted the right to make one back-up copy of the machine-readable portion of the Software on the condition that all copyright and proprietary notices are also reproduced.
5. Except where the present Agreement expressly permits, the licensee is strictly prohibited from engaging in, nor may he permit third parties to engage in, the following: providing or disclosing the Software to third parties; providing use of the Software in a network, multiple PCs, multi-user or time-sharing arrangement where the users are not individual licensees; making alterations or copies of any kind of the Software; making any attempt to disassemble, de-compile or reverse engineer the Software in any way or form, or engaging in any activity aimed at obtaining underlying information not visible to the user during normal use of the Software; making copies or translations of the User Manual.

## Warranty

Prophetview 920 and Prophetview 920DVi come with a standard 3 year parts and service warranty from the date of purchase. Hercules Technologies' entire liability and your exclusive remedy is limited to the replacement of defective products. The warranty does not cover a decline in the luminosity of liquid crystal displays, a normal occurrence due to the passage of time. Likewise, the warranty does not cover the non-display of pixels, up to a limit of 6 defective pixels. In no event shall Hercules Technologies be liable to you or any third party for direct or indirect consequential, incidental or special damages which you may incur as a result of using the software, including, but not limited to, loss of data, or information of any kind, that you may experience.