



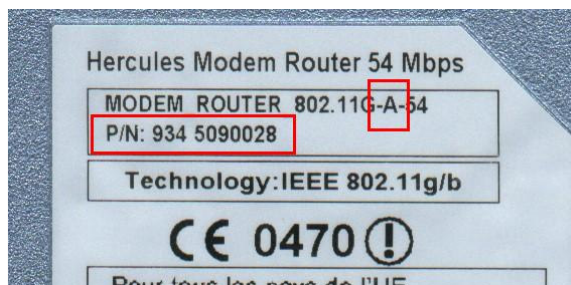
Modem Router 802.11G-A-54 - Firmware update



Contents :

- Firmware Version 1.0.59A(3.6.0A) **only** for **Annex A** modem router with **P/N 934 5090028**.

To identify which are the type of annex and the P/N of your modem router, turn around the box and check the name and P/N code up on the right label, like in the image below:



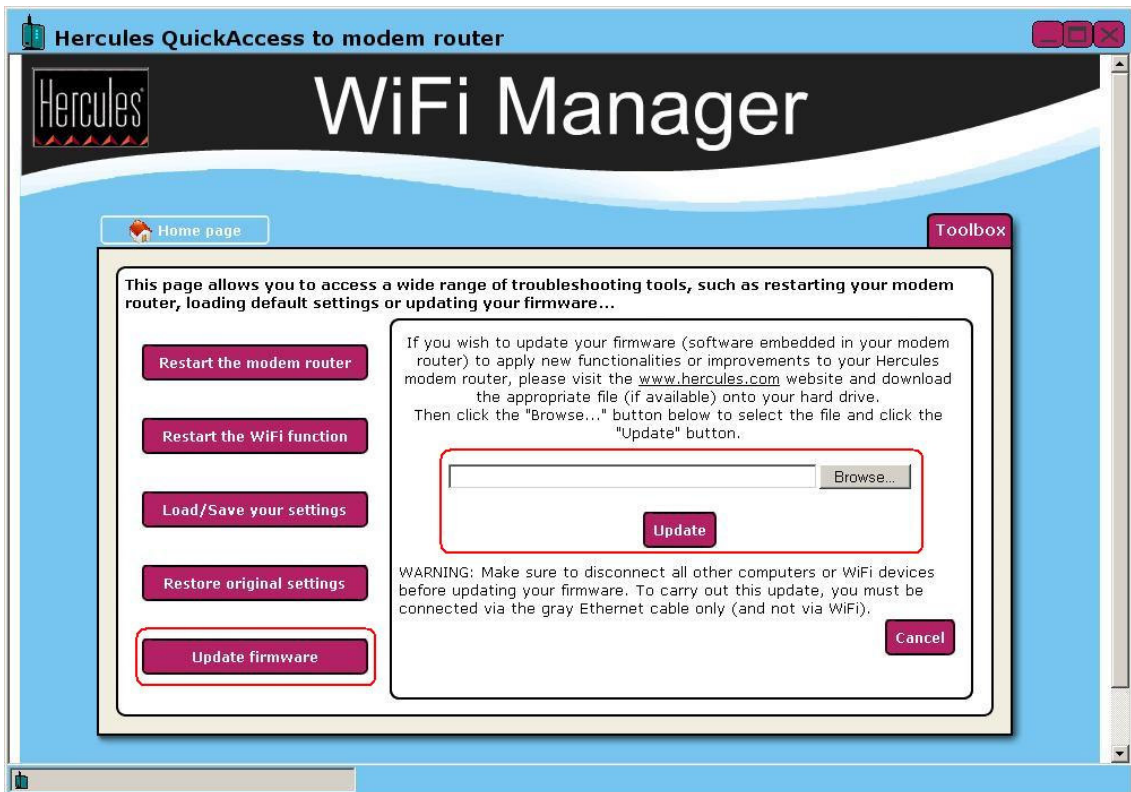
ACHTUNG: Diese Firmware-Version arbeitet nicht mit Modem, welche in Deutschland und Österreich vertrieben werden (Annex B). Bitte laden Sie die Firmware-Version 1.0.59B(3.6.0A) für Annex B Modem Router.

How to update the firmware of your Modem router:

1. Connect your computer to the modem router via the Ethernet cable (the grey one) included in the box. Attention: do not update the firmware through WiFi connection.
2. Make sure that nobody is currently connected to your Modem router in WiFi, and that nobody uses your Modem router for connecting to the Internet.
3. Launch Quick Access to enter in WiFi Manager, the interface of your modem router.
4. Enter your password and click on the "Toolbox" button.



5. Select the "Update firmware" button.



6. Press "Browse" and select the folder containing the new Firmware.

7. Select the file "**Modem-Router-AnnexA-FS-v1059A(360A).img**", then "OK" and click on "Update".
8. The firmware update for your modem router is now starting and it can take several minutes.
DO NOT SWITCH OFF THE MODEM OR THE COMPUTER, UNDER NO CIRCUMSTANCES, DURING THIS PHASE!
Once the firmware update is completed, your modem router will restart automatically (all the LEDs will blink several times the same way as when you plug it to the power supply).
9. Wait for the modem to restart completely and click "*Home page*" in WiFi Manager.
10. You can now re-enter your password and check the new firmware version by choosing the "*Product information*" button.

Improvements brought in addition to versions 1.0.5(3.6.0A) and 1.0.24(3.6.0A):

- You can now manually modify the MTU value for ADSL packets, operation requested by some ISPs, like AOL.
- A table with the ADSL parameters specific to the main ISPs for a manual configuration was included.
- Improvement of WiFi network enabling/disabling procedure from WiFi Manager.
- Resolution of the occasional loss of parameters after restart.
- Additional help messages were added in WiFi Manager.
- Several graphical bugs of WiFi Manager are solved.