

CONTENTS

Clicking on a title in this table of contents will display the corresponding section

INTRODUCTION	3
1. HERCULES WIRELESS N USB MINI V2 SPECIFICATIONS	3
1.1. Technical specifications	3
1.2. System requirements	3
1.3. Box contents.....	4
2. HERCULES WIRELESS N USB MINI V2 INSTALLATION	5
Installing the WiFi Station N pack and the key	5
3. THE WIRELESS LOCAL AREA WIFI NETWORK	7
3.1. Selecting your network type.....	7
3.2. Wireless local area WiFi network security	8
4. THE WIFI STATION N UTILITY	9
4.1. Determining your connection status	9
4.2. Launching WiFi Station N	9
4.3. Connecting a Wi-Fi Direct™ compatible device	9
4.3.1. Connecting a Wi-Fi Direct™ device using the WPS button.....	10
4.3.2. Connecting a Wi-Fi Direct™ device using a PIN code	11
4.4. Connecting to a network with Wi-Fi Protected Setup™.....	12
4.4.1. Connecting to a network with the WPS button in WiFi Station N	12
4.4.2. Connecting to a network with a PIN code.....	13
4.5. Connecting to a network via the list of networks	14
4.6. Scanning for networks.....	16
4.7. Viewing connection settings.....	17
4.8. Viewing, modifying or adding Favorites – Creating an Ad hoc network	18
4.8.1. Security options.....	18
4.8.2. View/Modify Favorites.....	19
4.8.3. Adding a new Favorite manually or creating an Ad hoc network	20
4.9. About	22
4.10. Re-enabling your computer's integrated WiFi function.....	22
4.11. Temporarily disabling the Hercules Wireless N USB adapter's WiFi function	23
4.12. Exiting WiFi Station N	23

5.	WELCOME TO THE WIRELESS ATTITUDE™!	24
5.1.	Some requirements	24
5.2.	Computers running Windows 7: Sharing folders, a printer or an ADSL connection	24
5.2.1.	<i>Windows 7: Sharing an ADSL connection in an Infrastructure type network</i>	24
5.2.2.	<i>Enabling sharing</i>	26
5.2.3.	<i>Windows 7: Sharing public or personal folders</i>	28
5.2.4.	<i>Computers running Windows 7: Accessing shared folders</i>	30
5.2.5.	<i>Windows 7: Sharing a printer</i>	30
5.2.6.	<i>Computers running Windows 7: Accessing the shared printer</i>	32
5.3.	Computers running Windows Vista: Sharing folders, a printer or an ADSL connection.....	33
5.3.1.	<i>Enabling sharing</i>	33
5.3.2.	<i>Windows Vista: Sharing public or personal folders</i>	36
5.3.3.	<i>Computers running Windows Vista: Accessing shared folders</i>	38
5.3.4.	<i>Windows Vista: Sharing a printer</i>	38
5.3.5.	<i>Computers running Windows Vista : Accessing the shared printer</i>	40
5.3.6.	<i>Windows Vista: Sharing an ADSL connection in an Infrastructure type network</i>	42
5.4.	Computers running Windows XP: Sharing folders, a printer or an ADSL connection	44
5.4.1.	<i>Windows XP: Using the Network Setup Wizard in an Infrastructure network</i>	45
5.4.2.	<i>Windows XP: Using the Network Setup Wizard in an Ad hoc network</i>	48
5.4.3.	<i>Windows XP: Sharing folders</i>	54
5.4.4.	<i>Computers running Windows XP: Accessing shared folders</i>	55
5.4.5.	<i>Windows XP: Sharing a printer</i>	55
5.4.6.	<i>Windows XP: Modifying a workgroup name</i>	57
5.4.7.	<i>Windows XP: Manually enabling or disabling your adapter's WiFi connection (advanced users)</i>	58
6.	GLOSSARY	59
7.	TECHNICAL SUPPORT	63
8.	WARRANTY	63

INTRODUCTION

A local area WiFi network allows users to easily exchange data between computers located in the same room or in different rooms, share an Internet connection and/or a printer among several computers, play network games and, above all, does away with the need for kilometers worth of cables.

By following the instructions in this manual, you can install a local area WiFi network on your own and also create a protective "wall" around your network to secure it.

Finally, thanks to your Hercules Wireless N WiFi key, you will now be able to enjoy faster transfer speeds along with enhanced coverage and experience the new world of wireless networking. And with the Wi-Fi Direct™ feature, you no longer require a hotspot or an Internet connection. You can connect two devices directly (smartphone, computer, touch screen tablet, digital camera, compatible TV set, etc.) and instantly share multimedia contents, enjoy wireless printing and more.

1. HERCULES WIRELESS N USB MINI V2 SPECIFICATIONS

1.1. Technical specifications

- Compatible with the following WiFi protocols:
 - 802.11b: 1, 2, 5.5 and 11Mbps/s data rates in the 2.4GHz band
 - 802.11g: 6, 9, 12, 18, 24, 36, 48 and 54Mbps/s data rates in the 2.4GHz band
 - 802.11n: data rates in the 2.4GHz band, varying depending on the bandwidth of the channel used (20 or 40MHz). Values are classified from MCS0 to MCS15 and vary from 7.2 to 144.44Mbps/s for 20MHz and from 15 to 300Mbps/s for 40MHz
- **DSSS/CCK** frequency range and **OFDM** modulation from 2.412GHz to 2.484GHz (13 channels)
- Compatible with the following security protocols:
 - **WEP** with 64 and 128-bit key length
 - **WPA-PSK** with TKIP or AES encryption (802.11i security protocol)
 - **WPA2-PSK** with TKIP and AES encryption (802.11i security protocol)
 - **WPS** (Wi-Fi Protected Setup™)
- Wi-Fi Direct™ technology

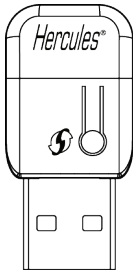
1.2. System requirements

- Intel Pentium III or AMD 500MHz and higher or compatible
 - Available USB 1.1 port or higher
 - 64MB RAM
 - 50MB free hard disk space for installing drivers and application
 - CD-ROM drive
 - Operating system: XP Home & Professional SP2/SP3, Vista, Windows 7
- Note:** Wi-Fi Direct™ requires Windows 7.



If you connect your Hercules Wireless N USB mini v2 to a USB 1.1 bus, Windows may inform you that your device will function at a reduced speed. Instead of providing theoretical transfer rates of 300Mbps/s, Hercules Wireless N USB mini v2 will instead be limited to 12Mbps/s.

1.3. Box contents



- USB 2.0-type WiFi network adapter
- Quick Start Guide
- Installation CD-ROM containing manual in PDF format, drivers and the WiFi Station N pack for client adapter configuration

2. HERCULES WIRELESS N USB MINI V2 INSTALLATION



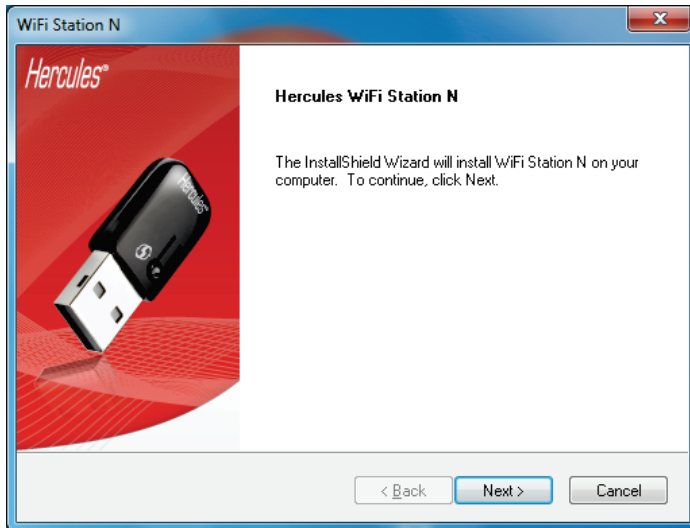
Before connecting your Hercules Wireless N USB v2, you must first install Hercules WiFi Station N, which includes the drivers and the WiFi Station N application, a utility for detecting and configuring network settings.

Installing the WiFi Station N pack and the key

To install the WiFi Station N pack, proceed as follows:

- Insert the included installation CD-ROM into your CD-ROM drive.

The installation menu appears automatically.



If the installation menu does not launch automatically:

- Double-click **My Computer**.

- Double-click .

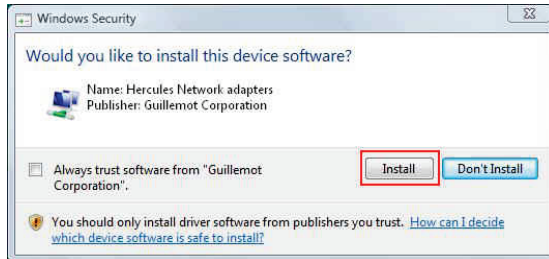
- Double-click **Setup.exe**, if necessary.

- Click the **NEXT** button.

- Follow the on-screen instructions.

Windows Vista/7

- When the installation Assistant prompts you to install the **Hercules Network adapters** device, click the **Install** button and continue the installation.

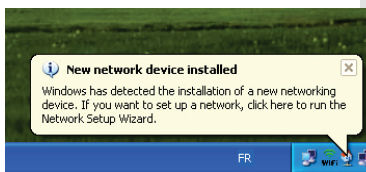


Windows XP/Vista/7

When the installation Assistant prompts you to connect your WiFi adapter, **plug your Hercules Wireless N USB mini v2 into a USB port** of your computer.

*The Assistant automatically detects your adapter and continues the installation. If the Windows **New Hardware Found** window appears, wait until it closes.*

Once installation is complete, the Hercules WiFi Station N icon appears in the taskbar and WiFi Station N is launched automatically.



If the New network device installed message appears in the taskbar:

- Do not click the information bubble: wait for it to disappear or click the X to close it.

- Please refer to chapter 5. **Welcome to the Wireless Attitude!** for details on how to configure your network.



You will obtain optimal performance by placing the antenna a minimum distance of 2m from the router (for an Infrastructure network) or from another WiFi adapter (for an Ad hoc network). The maximum WiFi range indoors may vary from 10 to 30m depending on the router's power, the type of antenna (directional or not), its position in a room and the presence of obstacles such as paper (a bookcase), metal, water (an aquarium) or a wall made of reinforced concrete between the access point and the antenna(e) of the WiFi computer(s).

In the installation menu, you can also view and print out this manual in pdf format by clicking **Manual**.

3. THE WIRELESS LOCAL AREA WIFI NETWORK

What exactly is WiFi? An abbreviated form of “Wireless Fidelity,” WiFi is the commercial name for wireless local area network technology compliant with the **802.11** standard. Therefore a WiFi network is actually a 802.11 network, but it’s easier to talk about WiFi than the 802.11 standard! In practical terms, WiFi allows for the connection of laptop computers, desktop computers or Personal Digital Assistants (PDAs) many tens of meters distant from one another via an **access point**, allowing them to communicate with one another without any cables and exchange data at high speeds.

Your **Hercules Wireless N USB mini v2** key, combined with a WiFi N router, will make up one of the elements of your local area wireless network. You will also benefit from its **MIMO technology**, allowing for the transfer of a greater amount of data between the WiFi transmitter (a WiFi N router or “box”, for example) and your key over a greater distance. With a **theoretical maximum transfer rate of 300Mbits/s** (compared with 54Mbits/s for the 802.11g standard), you will be able to get around walls and other obstacles in your home and enjoy high-definition video images or transferring large files with amazing efficiency.



The theoretical maximum transfer rate can only be attained with a WiFi N router transmitting the signal on two channels (for more information on two-channel transmission, please refer to your router’s manual) in the absence of obstacles between your router and your key. For more information on **MIMO technology and 802.11n**, please refer to the glossary at the end of the manual or click [here](#)).

3.1. Selecting your network type

The choice of network type depends on the hardware you have at your disposal.

You have...	You should...
One or more computers plus a WiFi ADSL modem router (or an Ethernet ADSL modem connected to a WiFi router).	Opt for Infrastructure mode (the default mode for WiFi adapters), whereby adapters are connected to your access point , otherwise known as a router . Infrastructure mode is ideal for exchanging data, network gaming, and also for sharing an Internet connection and/or a printer among several computers. To find out how to install and configure your modem router or your router, please refer to the manufacturer’s documentation.
A USB or Ethernet ADSL modem directly connected to one of your computers by a cable (you don’t have a WiFi router).	Opt for Ad hoc mode (also known as Peer to Peer), whereby clients are connected to one another without an access point, which is to say without a router. To create an Ad hoc network, you must configure one of the computers in Ad hoc mode (preferably the one connected to the modem) so that the other computer detects this network. Ad hoc mode allows users to exchange data or play network games between two computers. Due to certain dysfunctions inherent to this mode, however, it is reserved for advanced users only.

Two computers equipped with WiFi adapters (you don't have a WiFi router).

Opt for **Ad hoc mode**. A variety of WiFi adapter formats are available depending on the type of computer you have: PCI card (to be inserted inside of a desktop computer), USB adapter (to be plugged into a desktop or laptop computer's USB port), or PCMCIA card (to be connected to an available Type II PCMCIA port on a laptop computer). Once equipped with its adapter, your computer becomes what is known as a **client** within the WiFi system.

If both computers offer the **Wi-Fi Direct™** feature, they can connect directly, while offering **WPA2-PSK** security.



If you only have two computers and simply wish for them to be able to communicate with one another, the purchase of a **router** is optional. Without a router, however, your WiFi network will very soon be limited, should you wish to invest in a third computer for example, or if you want to share an Internet connection. To share an Internet connection, one of the two computers must be running and connected to an ADSL modem.



Ad hoc mode should only be used if your network is made up of two computers. With more than two computers, it is preferable to opt for Infrastructure mode (router + clients).

3.2. Wireless local area WiFi network security

Taking advantage of the freedom offered by WiFi technology does not simply mean connecting computers to one another without the presence of wires. All computers in a wireless network communicate with one another, exchange data, and share an Internet connection. It is therefore imperative that you secure your system in the best way possible. **Why secure your system?** Imagine a neighbor who lives in the same building as you and is also equipped with a WiFi network, which detects several wireless networks and chooses yours inadvertently, since it is unsecured. In this way, the neighbor can share your Internet connection even though he doesn't even have a modem! Admittedly this does not make him a computer hacker (although it might seem like it!), but it's you who is footing the bill.

In order to avoid this kind of undesirable situation, we invite you to refer to the following chapter which will explain how to connect to a wireless network and how to protect it using one of the security methods available.

4. THE WIFI STATION N UTILITY


The **WiFi Station N** utility has been specifically developed by Hercules for the Hercules Wireless N family of adapters. It allows you to get the most out of all your adapter's functionalities via a user-friendly interface that is easy to operate and features a very high level of security, based on **WPA-PSK** and **WPA2-PSK** encryption.

4.1. Determining your connection status

After installing WiFi Station N, the Hercules WiFi Station N icon appears in the Windows taskbar. Once your adapter has been connected (please see the "Hardware installation" chapter), you will immediately be able to view your connection status:

- If the icon appears **green**, a connection to the network is established, and signal strength is excellent.
- If the icon appears **yellow**, a connection to the network is established, and signal strength is good.
- If the icon appears **red**, a connection to the network is established, but signal strength is weak: try moving the client adapter's antenna closer to the antenna on the access point.
- If the icon appears **gray**, your WiFi client adapter has been detected, but is not connected to any WiFi network: you must connect to a network detected by WiFi Station N.
- If the icon has a **red cross over it**, your WiFi client adapter has not been detected by Windows: verify that it is properly connected and enabled and repeat the installation, if necessary.

4.2. Launching WiFi Station N

To launch **WiFi Station N**, simply double-click the  icon in the taskbar.

4.3. Connecting a Wi-Fi Direct™ compatible device

The Wi-Fi Direct™ feature allows you to connect two Wi-Fi Direct™ compatible devices directly, without requiring a hotspot, by simply pressing a WPS button or entering a PIN code.

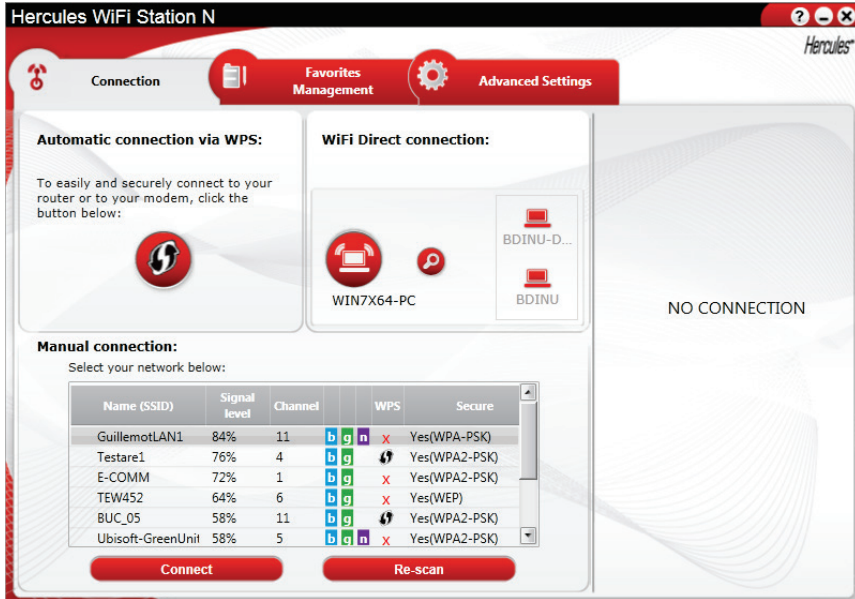


To use the **WPS (Wi-Fi Protected Setup™)** simple connection feature, the device that you want to connect to must be WPS compatible and certified.



For more information regarding Wi-Fi Direct™ compatible devices, please connect to www.wi-fi.org.

- In WiFi Station N, access the **Connection** page.



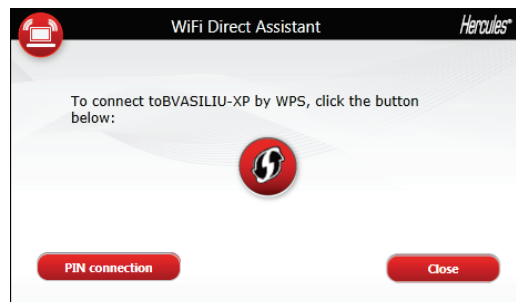
- Double-click the  button to activate Wi-Fi Direct™ on the computer and launch the compatible device detection process.

A list of detected Wi-Fi Direct™ compatible devices is displayed.

- Double-click the device that you want to connect to (computer, smartphone, printer, Wi-Fi Direct™ compatible TV set, etc.).

Two connection options are available: WPS or PIN code.

4.3.1. Connecting a Wi-Fi Direct™ device using the WPS button



- Click the  button.

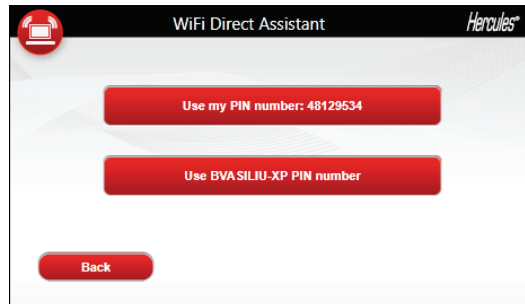
WiFi Station N requests the other device to connect over WPS. You have two minutes in which to connect the device over WPS.

- Access the device that you want to connect to, and accept the request. Your computer and the second device are now connected.

4.3.2. Connecting a Wi-Fi Direct™ device using a PIN code



- Click the **PIN** connection button.



Two options are available: you can use your computer's PIN code (method no. 1) or use the PIN code for the device that you want to connect to (method no. 2).

Method no. 1: select Use my PIN code: [PIN_code].

WiFi Station N requests the other device to connect.

- On the device that you want to connect to, accept the request and enter the PIN code. Your computer and the second device are now connected.

Method no. 2: select Use the PIN code [device_name].

- Enter the PIN code when requested to by WiFi Station. The PIN code will be displayed on the screen of the device that you want to connect to, or will be printed on a sticker attached to the device that you want to connect to.



WiFi Station N connects to the Wi-Fi Direct™ compatible device using a **WPA2-PSK** safety key.



Double-click the  button to deactivate Wi-Fi Direct™. Please note that this will disconnect any connected devices.

4.4. Connecting to a network with Wi-Fi Protected Setup™

If connecting to a WiFi network and configuring your network seems like tedious work to you, use the integrated **WPS (Wi-Fi Protected Setup™)** function, indicated on the product or packaging by way of the following logos:



This technology simplifies the procedure for connecting to a wireless network between a WPS-compatible router and your **Hercules Wireless N mini v2** key. Two methods are available: simply click a button in the WiFi Station N software, or enter a PIN code in the WiFi Station N interface.



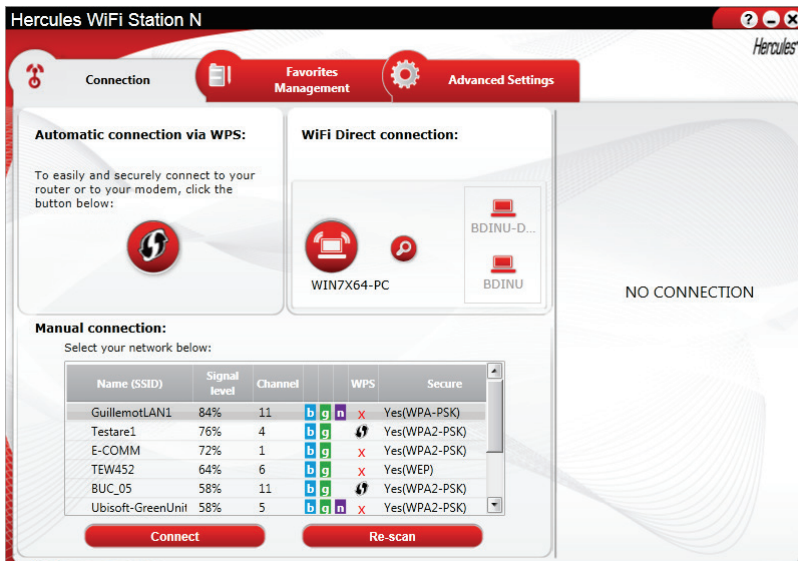
In order to benefit from a simplified connection thanks to the **WPS (Wi-Fi Protected Setup™)** function, your router must be WPS-compatible and certified.

4.4.1. Connecting to a network with the WPS button in WiFi Station N

- On your WiFi router: press the **WPS** button (for more information, please refer to your WPS-compatible router's manual).

You then have two minutes to connect your key via WPS.

- In WiFi Station N, go to the **Connection** page.



- Click the  button.

Your Hercules Wireless N mini v2 key connects to your WiFi router using the security key defined on the router.

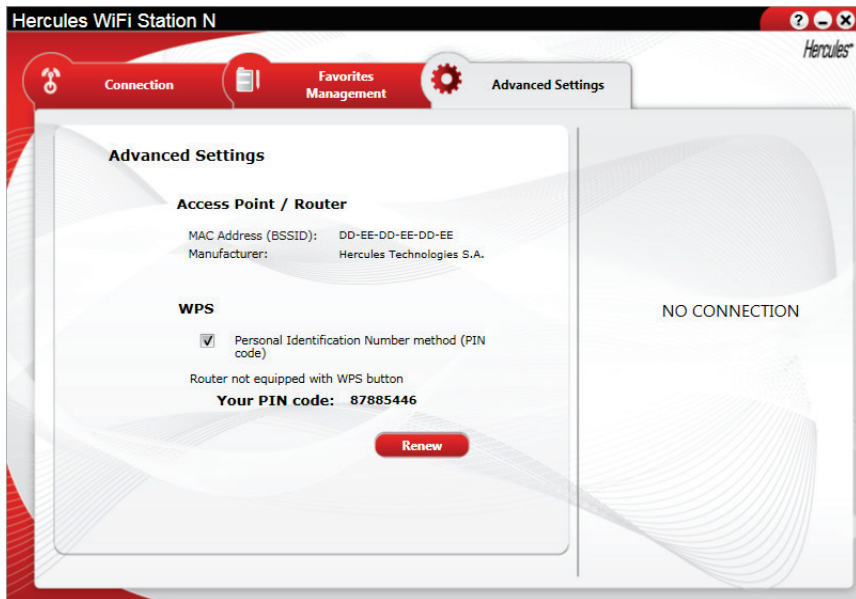
If the connection is not secure, a **WPA2** security key is generated automatically.

If the WPS router is only compatible with WPA keys (and not WPA2), a **WPA** key will be generated.

4.4.2. Connecting to a network with a PIN code

- In WiFi Station N, go to the **Advanced Settings** page.

- In the **WPS** section, tick the **Personal Identification Number method (PIN code)** box.



- Make a note of the **PIN code** that is displayed.


- Enter this PIN code in the interface of your WiFi router (for more information, please refer to your WPS-compatible router's manual).

You then have two minutes to connect your key via WPS.

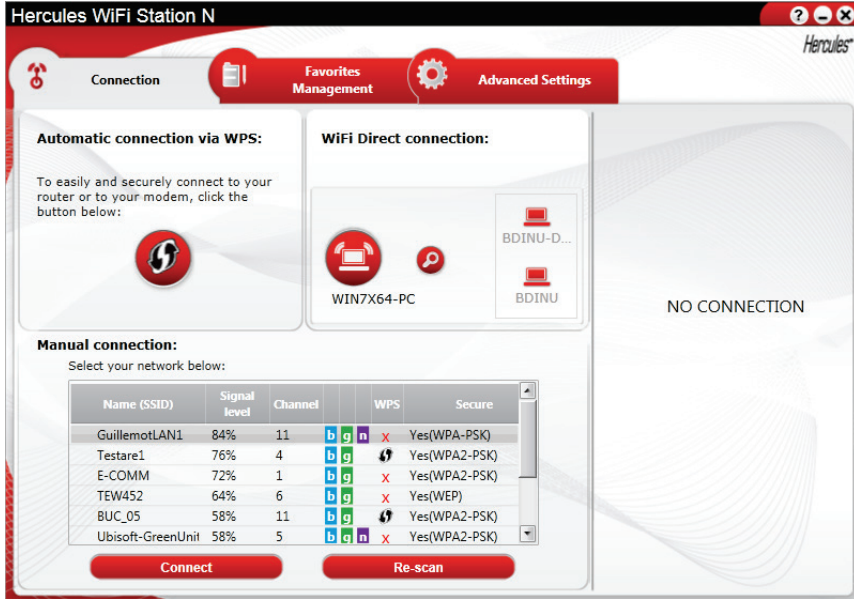
- In WiFi Station N, go to the **Connection** page.

- Click the  button.

WiFi Station N connects your Hercules Wireless N key to your WiFi router using the security key defined on the router. If the connection is not secure, a **WPA2** security key is generated automatically.

Note: if another WiFi device has the same PIN code, click the  button to obtain a new code.

4.5. Connecting to a network via the list of networks



WiFi Station N opens by default to the **Connection** page and WiFi network detection begins automatically. The **List of detected networks** displays all secured, unsecured or hidden networks, whether Infrastructure or Ad hoc.

To connect to an unsecured network (the value No appears in the Secure field):

- Select the network you wish to connect to.
- Click the **Connect** button.
- If you wish, you can add the network to your Favorites by ticking the **Yes** box and giving it a name.

After a few seconds, a green icon appears beside the network, indicating that you are connected to the network.



If you want your computer to automatically reconnect to a specific network, add the network to your list of Favorites and select the **Automatic Connection** option.



If connection to the selected network fails in **Infrastructure mode**, verify the router's security settings (key, MAC address filtering, etc.).

To connect to a secured network (the value Yes appears in the Secure field, along with the type of key used):

- Select the network you wish to connect to.
- Click the **Connect** button.
- Enter the security key when prompted to do so by WiFi Station N.
- If you wish, you can add the network to your Favorites by ticking the **Yes** box and giving it a name.



If you wish to connect to a secure network, you must know the security key used. Before establishing a connection, WiFi Station N will prompt you to enter this key (a message will help you to identify the type of key required).

To connect to a hidden network (the Network Name (SSID) field is empty):

If one or more of the detected networks does not include a name (the **Network Name (SSID)** field is empty), this means that the network is not broadcasting its name. To connect to this network, select it and then:

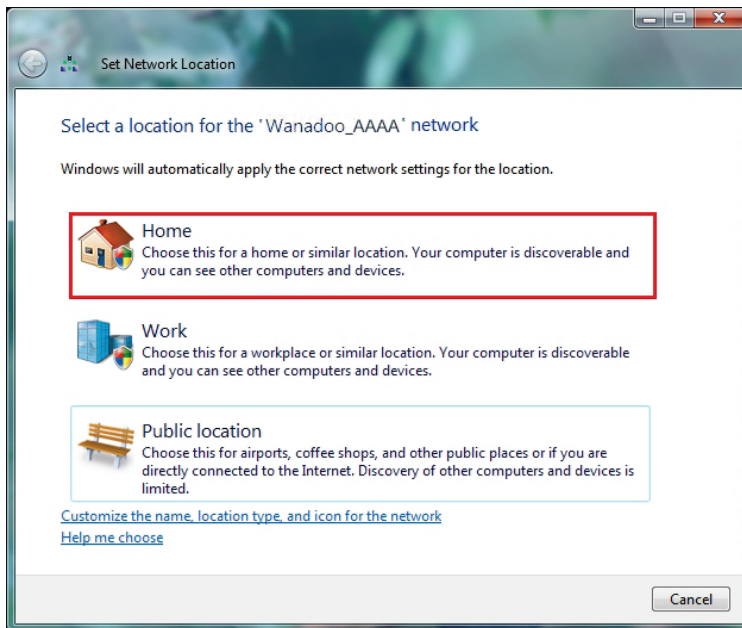
- Click the **Connect** button.
- Enter the network name (SSID) in the window that appears.
- If the network is secure, enter the key used.
- If you wish, you can add the network to your Favorites by ticking the **Yes** box and giving it a name.

Now that you know how to connect to a network, you will immediately be able to put into practice the different possibilities offered by WiFi. By referring to chapter 5. **Welcome to the Wireless Attitude!**, you will be able to enter the exciting world of wireless computing and learn how to share folders, a printer or an ADSL connection.

If you first wish to explore all of WiFi Station N's functionalities, we invite you to read the following chapters.

Windows Vista/7

After establishing a connection to your network, Vista prompts you to select **your network location**: Home, Work, Public location.



For our purposes, we will consider that you will be using your network at **home**, which will allow you as well as other network users to view the computers present on the network (the “See and be seen” principle, indispensable to be able to share folders, a printer and an ADSL connection).

Note: If you prefer to connect to a public hotspot, while you are in a railway station, for example, please refer to the explanations provided by Windows Vista.



Windows Vista may not prompt you to select your network location at this point and select a **public** location for you by default (this will typically be the case if you are already connected to a network). To select another location, you must click the **Customize** link located opposite the name of your network in the **Wanadoo_AAAA (public network)** zone of the **Network and Sharing Center**.

4.6. Scanning for networks

When WiFi Station N is launched, a scan for detected networks takes place automatically. Afterwards, you can manually refresh the list of detected networks by clicking the **Rescan** button. The following scanning radius icon is displayed while the scan is carried out:





During the scan, it may happen that the scanning radius icon remains fixed and does not change. This means that the Flash animation plug-in is not installed on your computer. To view the animation, you must download this module via the Internet and follow the installation instructions.

4.7. Viewing connection settings

Information in the **Connection status** zone is not accessible or modifiable. It includes all settings corresponding to the network to which the computer is connected:

The screenshot shows a window titled "Connection status" with a red upward arrow icon. It contains several sections:

- Connected to:** Network Name (SSID): Hercules
- Favorites:** Name: PROFILE1
- Security:** Security type: None
- TCP/IP Details:**
 - IP Address: 192.168.2.2
 - Subnet Mask: 255.255.255.0
 - Default Gateway: 192.168.2.1
- Connection:**
 - RF channel: 11
 - Network type: Infrastructure
 - Upload speed: 150.0 Mbps
 - Link quality: A green progress bar showing approximately 75%.

- **Network Name (SSID):** the **SSID** (Service Set Identifier) is the unique name shared by clients and the access point in a wireless network.

- **Name:** the Favorite name you have entered, if the network has already been saved.

- **Security type:** The WiFi security standard allows you to secure the information exchanged over your network. The security types supported by WiFi Station N are WEP, WEP (Shared), WPA-PSK (TKIP), WPA-PSK (AES) and WPA2.

- **TCP/IP Details:** information relating to the TCP/IP Internet protocols assigned by the router/access point once a connection to the network has been established.

- **RF channel:** frequency channel used by the local area WiFi network to communicate.

- **Network type:** the selected network architecture, **Infrastructure** or **Ad hoc** (Peer to Peer).

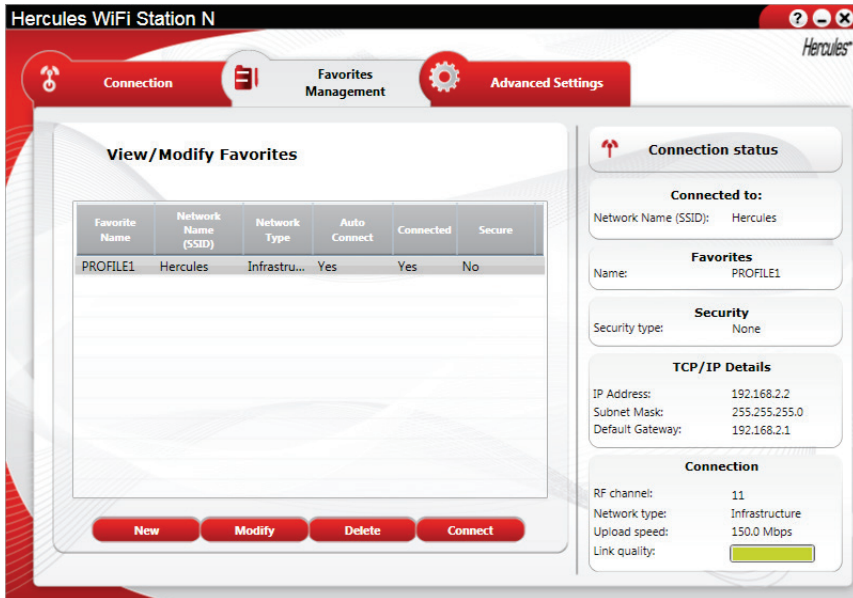
- **Upload speed:** value indicating the data transmission rate.

- **Link Quality:** a progressive bar (from 0 to 100%) displays the status of the connection between the access point and the Hercules Wireless N WiFi adapter.



The symbol is displayed if you are connected to a network whose security level is not supported by the 802.11n-2009 standard. Data rates for your connection are therefore limited to 54Mbps.

4.8. Viewing, modifying or adding Favorites – Creating an Ad hoc network



A Favorite is a group of settings for connection to a known Infrastructure or Ad hoc network (your own, a neighbor's, a friend's). **WiFi Station N** allows you to easily store the settings for a network in memory, or view or modify existing Favorites.



In an Ad hoc (Peer to Peer) network, creating a Favorite is the equivalent of actually creating the wireless link between the computers.

4.8.1. Security options

To avoid having an individual on the outside improperly connect to your network, we strongly recommend that you secure your network. The table below sums up the 4 security types supported by WiFi Station N.

Type	Level of security	Key used
WEP	The lowest level of security, in which a single encryption key is used for the data exchanged. Each wireless client in the network must use the same key to decode the transmission.	64-bit (10 characters) or 128-bit (26 characters) key in hexadecimal format.
WEP (Shared)	Level of security based on WEP, moreover employing an authentication method via a shared key.	64-bit (10 characters) or 128-bit (26 characters) key in hexadecimal format.

WPA-PSK (TKIP)	Latest-generation high level of security, specially designed for environments such as a small business or the home, using a pre-shared key.	Password with a minimum of 8 alphanumeric characters .
WPA-PSK (AES)	Level of security superior to WPA-PSK (TKIP), using an encryption method based on the new IEEE 802.11i security standard.	Password with a minimum of 8 alphanumeric characters .
WPA2-PSK (TKIP)	Latest-generation very high level of security, specially designed for environments such as a small business or the home, using a pre-shared key.	Password with a minimum of 8 alphanumeric characters. An alphanumeric character corresponds either to a number (0-9), or to a letter (a-z or A-Z).
WPA2-PSK (AES)	Level of security superior to WPA2-PSK (TKIP), also of the latest generation, specially designed for environments such as a small business or the home, using a pre-shared key.	Password with a minimum of 8 alphanumeric characters. An alphanumeric character corresponds either to a number (0-9), or to a letter (a-z or A-Z).

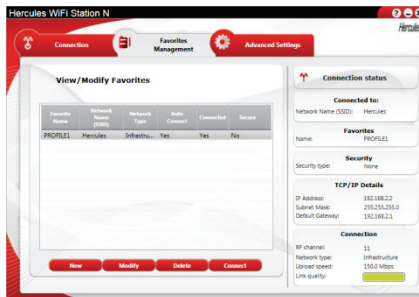
A **hexadecimal key** is composed of numbers from 0 to 9 and letters from A to F (example: A123BCD45E for a 64-bit key). An **alphanumeric character** corresponds either to a number (0-9), or a letter (a-z or A-Z).



The **WEP**, **WPA-PSK (TKIP)** and **WPA2-PSK (TKIP)** security levels are not supported by the 802.11n-2009 standard. Data rates for your connection are therefore limited to **54Mbps**.

4.8.2. View/Modify Favorites

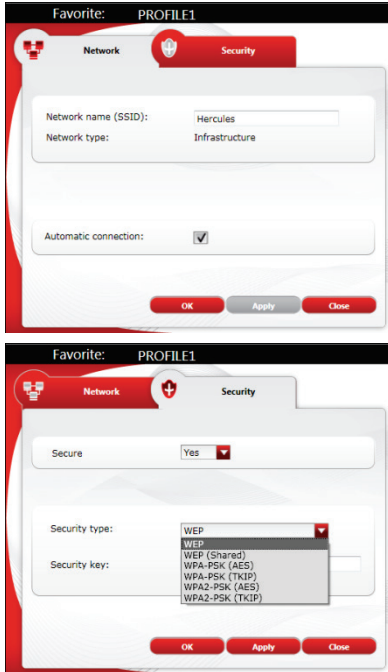
The **Favorites Management** tab displays a window containing Favorites that have already been saved.



View/Modify Favorites window

In this window, you can:

- **Create** a new favorite.
- **Delete** a Favorite from the list.
- **Modify** the basic, security or advanced settings for your Favorite.
- **Connect** to the network corresponding to the selected Favorite.



Network tab (accessible after clicking the Modify button)

Network name (SSID): enter the SSID (Service Set Identifier), which is to say the unique name shared by clients and the access point in your wireless network.

Network type: Infrastructure or Ad hoc.

RF channel (Ad hoc only): select the RF channel from a list of available channels (1 to 13), channel 1 being the default channel.

Automatic connection: tick this box to have the client automatically connect to this network.

Security tab (accessible after clicking the Modify button)

Secure: the network may be unsecured (**No**) or secure (**Yes**); in this case, you must select the security type and enter an encryption key.

Security type: WEP, WEP (Shared), WPA-PSK (TKIP), WPA-PSK (AES), WPA2-PSK (TKIP) or WPA2-PSK (AES).

Security Key: enter an encryption key of 10 or 26 hexadecimal characters for a WEP key, or from 8 to 64 characters for a WPA-PSK or WPA2-PSK key.

A hexadecimal key is composed of numbers 0 to 9 and letters A to F (example: A123BCD45E).

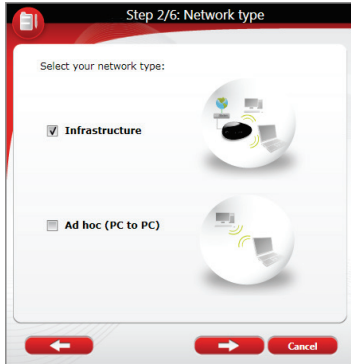
4.8.3. Adding a new Favorite manually or creating an Ad hoc network

To create a Favorite (Infrastructure or Ad hoc network) specifically for your home or office, for example, click the **New** button.


The manual creation of a new Favorite or an Ad hoc network includes the following steps:

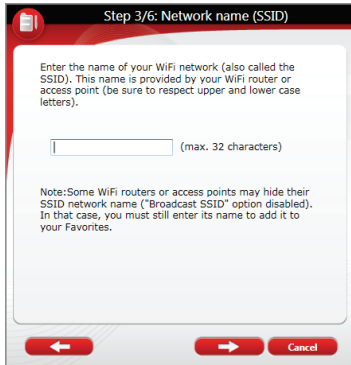
- Step 1: enter a name for your Favorite (for example: Work, Sport, etc.).






- Step 2: select either **Infrastructure** or **Ad hoc** mode for your network architecture; Infrastructure architecture is selected by default. **Reminder: Infrastructure** is a type of network with an access point + at least two computers, whereas in **Ad hoc** mode there will be two or more computers without an access point (one of the computers creates the network, while the other only detects it).

 If you opt for **Ad hoc** mode, you must select the **RF channel** from a list of available channels (1 to 13), channel 1 being the default channel.




- Step 3: enter the name of your network (SSID name).

 If you want to create your **Ad hoc** network, give it the name of your choice here.

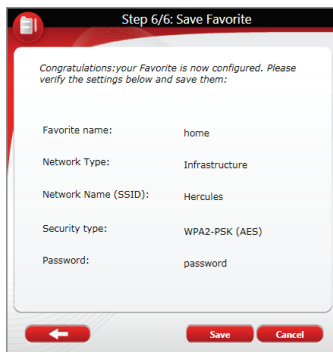


- Step 4: indicate whether or not your network is secured. **No** is selected by default. If you know the security settings, click **Yes**. Next, select your **Security Type** from the drop-down list and provide the **Security key** (10 hexadecimal characters, for example, for WEP encryption).

 In **Infrastructure** mode, the security key corresponds to the key entered in the modem router. In **Ad hoc** mode, you enter your own security key; it will be required of any devices attempting to connect to your network.



- Step 5: select whether you wish to automatically connect to the network each time your computer starts up. **Yes** is selected by default.



- Step 6: the connection settings you have just defined are summed up in this screen. Click **Save** to add your network to the list of Favorites.

In Infrastructure mode:

- If the network is not detected, or if you are already connected to this network: the network is simply saved in the list of Favorites.
- If the network is detected, but you are not currently connected to it, a dialog box prompts you to connect.

In Ad hoc mode:

- If the network is not detected: a dialog box prompts you to enable the network.
- If you are already connected to the network: the network is simply saved in the list of Favorites.
- If the network is detected, but you are not currently connected to it, a dialog box prompts you to connect.



Automatic connection to an **Ad hoc** network disables automatic connection to **Infrastructure** networks saved in your Favorites. If the Ad hoc network is not detected when your computer starts up (which is to say, if it has not been created and enabled on another computer in your network), it is automatically enabled on your computer (it is then detected by the other computers in your network).

4.9. About

The **About** button, located in the top right-hand corner of the window, displays information regarding the version of the WiFi Station N utility and the version of drivers used by the WiFi client.

4.10. Re-enabling your computer's integrated WiFi function

If your computer features an integrated WiFi function, WiFi Station N disables it automatically during installation (only in Windows XP). To re-enable this function:

- In the Windows taskbar, right-click the Hercules WiFi Station N icon and select **Use Microsoft Zero Config as configuration utility** (Windows XP only).

Your integrated WiFi function is enabled once again. You can remove your Hercules Wireless N adapter.

To re-enable WiFi Station N as the configuration utility for your Hercules Wireless N adapter:

- In the Windows taskbar, right-click the Hercules WiFi Station N icon and select **Use Hercules WiFi Station N as configuration utility**.

Use Microsoft Zero Config as configuration utility
 Use Hercules WiFi Station as configuration utility



If you are using Microsoft Zero Config configuration (Windows XP only) and your Hercules Wireless N adapter is still connected, some WiFi Station N tabs, buttons or options will not be displayed or will not be available.

4.11. Temporarily disabling the Hercules Wireless N USB adapter's WiFi function

In order to avoid completely uninstalling the WiFi application, or disabling your WiFi adapter via Windows or disconnecting it, Hercules has included a function which allows you to very simply cut off WiFi transmission/reception. In this way, you can leave your computer for a few hours with complete peace of mind, secure in the knowledge that any intrusions onto your network are impossible. When you return, all you have to do is switch WiFi back on.

To disable the WiFi function while you are away:

- In the Windows taskbar, right-click the Hercules WiFi Station N icon and select **Switch ON my WiFi**.

To re-enable the WiFi function:

- In the Windows taskbar, right-click the Hercules WiFi Station N icon and select **Switch OFF my WiFi**.

Switch ON my WiFi
 Switch OFF my WiFi

4.12. Exiting WiFi Station N

The **Close** button allows you to move WiFi Station N to the background, but the application remains enabled. To exit WiFi Station N completely, you must right-click the WiFi Station N icon in the Windows taskbar and select **Exit**.

5. WELCOME TO THE WIRELESS ATTITUDE™!

In the following chapters, we will show you how wireless computing is closely linked to user-friendliness and ease of use. Sharing your folders, your printer, or letting friends use your ADSL connection for online gaming are some examples of the things we will help you to do. Enter the world of wireless and join in the **Wireless Attitude!**

5.1. Some requirements

- Each computer that you wish to connect to the network must be equipped with a WiFi adapter.
- To share an ADSL connection, your ADSL modem must be switched on and your ADSL line enabled.
- You must determine in advance whether you are using an **Infrastructure** or **Ad hoc** network. **Reminder:** **Infrastructure** is a type of network with an access point + at least two computers, whereas in **Ad hoc** mode, you have two computers without an access point.

5.2. Computers running Windows 7: Sharing folders, a printer or an ADSL connection



To create a network of computers, share data, a printer or an **ADSL** connection between computers running **Windows 7**, it is not imperative that the computers belong to the same **homegroup**. However, if you wish to share between **Windows 7** and an earlier operating system, make sure to define the same homegroup on all computers. For information on how to create a **homegroup**, please refer to the manual of your Hercules product.

Before proceeding as described below, please make sure that you have administrator rights. For more information on how to obtain administrator rights, please refer to the Windows 7 online help.

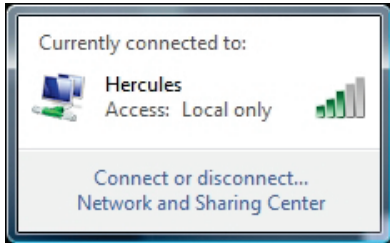
The access paths described hereafter may vary slightly if you have modified the default display in Windows 7 (that is to say, the Start menu properties and the Control Panel display).

You have connected your computer to a **private network** (as opposed to a **public network**). Therefore, the **discovery** options (namely, the ability to view outside devices and computers and to be seen from other networks) are enabled, and you may or not already have chosen to activate or deactivate **sharing** options (for more information on how to activate sharing options, please refer to section 5.2.2).

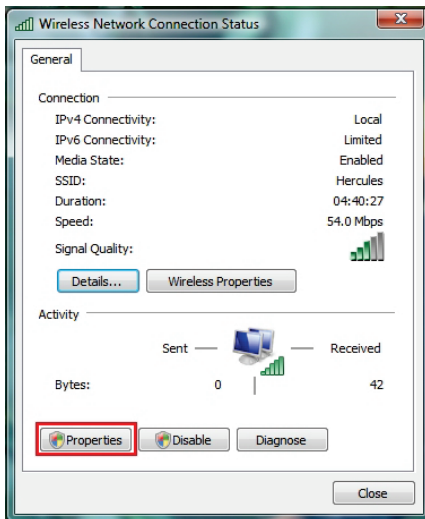
5.2.1. Windows 7: Sharing an ADSL connection in an Infrastructure type network

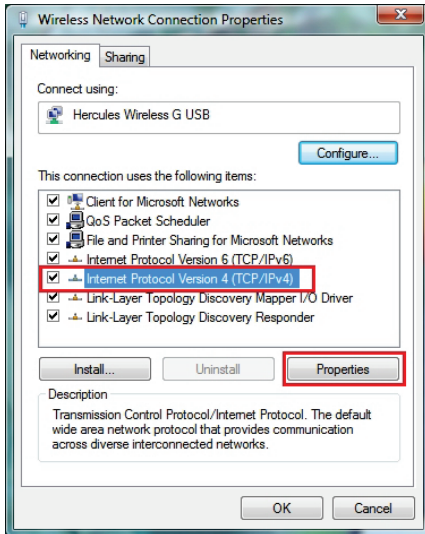
Reminder: If you have a Livebox, a modem router or a router connected to a modem and one or more computers, your network will be in **Infrastructure mode** by default. In this mode, the WiFi adapters are connected to your **access point**, which might be your Livebox, your Hercules Modem Router or your Hercules Router connected to a modem. **Infrastructure mode** is ideal for exchanging data, playing online, and also for sharing an Internet connection and/or printer among several computers. Follow the instructions below to finally free yourself from the cable that connects you to your modem... without cutting the links to your ADSL connection. Viva the Wireless Attitude!

Proceed as follows for each computer that will use the shared Internet connection:

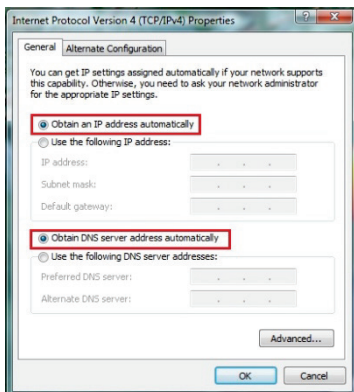


1. Connect to your wireless network (Hercules or Livebox_AAAA, for example).
2. Access the **Network and Sharing Center**. To do so, click the network icon on the Windows taskbar, then click the **Network and Sharing Center** link.
3. Click the **View status link**.
4. In the **Wireless Network Connection Status** window, click **Properties**.
5. In the Windows Vista confirmation window, click **Continue**.





6. In the **Wireless Network Connection Properties** tab, select **Internet Protocol version 4 (TCP/IPv4)**.
7. Click **Properties**.

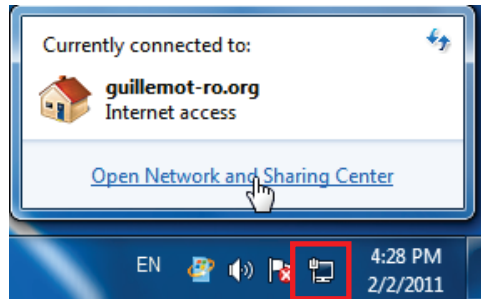


8. In the **Internet Protocol version 4 (TCP/IPv4)** window, select **Obtain an IP address automatically** and **Obtain DNS server address automatically**.
9. Click **OK** to validate.
10. Do the same for **Internet Protocol version 6 (TCP/IPv6)**.

To access the Internet, simply launch your Internet browser.

5.2.2. Enabling sharing

Before setting up sharing for your folders, your printer or your Internet connection, you must enable sharing in the **Network and Sharing Center**.

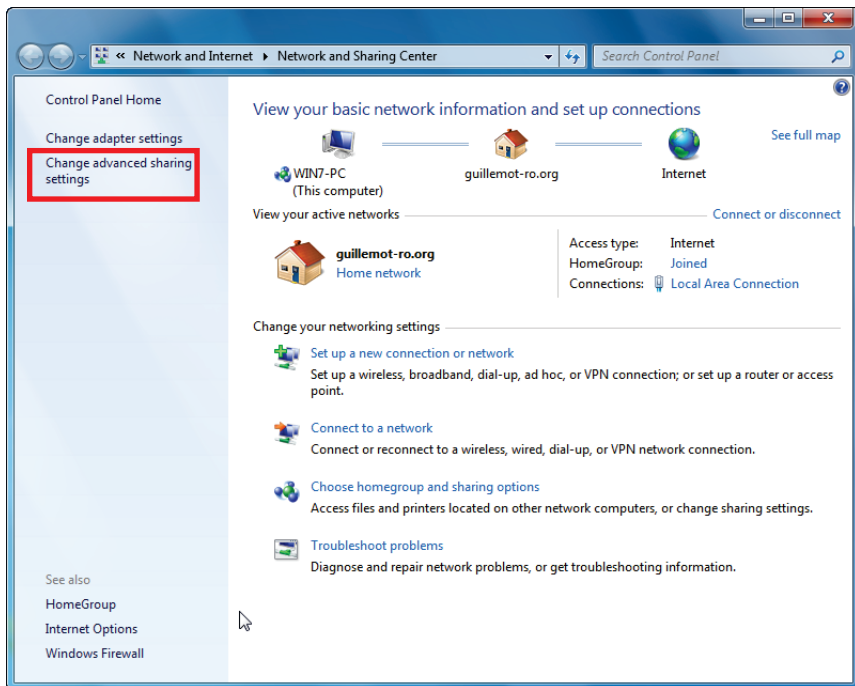


Note: To open the **Network and Sharing Center**, click the network icon in the **Windows taskbar**, then the **Open Network and Sharing Center** link.

Enabling file and printer sharing

Note: to activate printer sharing, you must first install a printer.

- Click the **Change advanced sharing settings** link.



- In the **File and printer sharing** pane, select **Turn on file and printer sharing**.

File and printer sharing

When file and printer sharing is on, files and printers that you have shared from this computer can be accessed by people on the network.

- Turn on file and printer sharing
 Turn off file and printer sharing

Enabling public folder sharing

Note: A public folder is a folder that can be shared by other users of the same computer or of the same network.

- In the **Public folder sharing** pane, select **Turn on sharing so anyone with network access can read and write files in the Public folders** (there will be no limitations on the contents of these folders in terms of viewing, making changes and additions or other actions).

Public folder sharing

When Public folder sharing is on, people on the network, including homegroup members, can access files in the Public folders. [What are the Public folders?](#)

- Turn on sharing so anyone with network access can read and write files in the Public folders
 Turn off Public folder sharing (people logged on to this computer can still access these folders)

- Now, click **Save changes** before enabling multimedia file sharing.

Enabling multimedia file sharing

Note: This option allows you to enable sharing of your music, videos and images.

- In the **Network and Sharing Center**, click the **Choose homegroup and sharing options** item.



Choose homegroup and sharing options

Access files and printers located on other network computers, or change sharing settings.

- In the **Share libraries and printers**, tick the **Pictures**, **Music** and **Videos** checkboxes.

Share libraries and printers

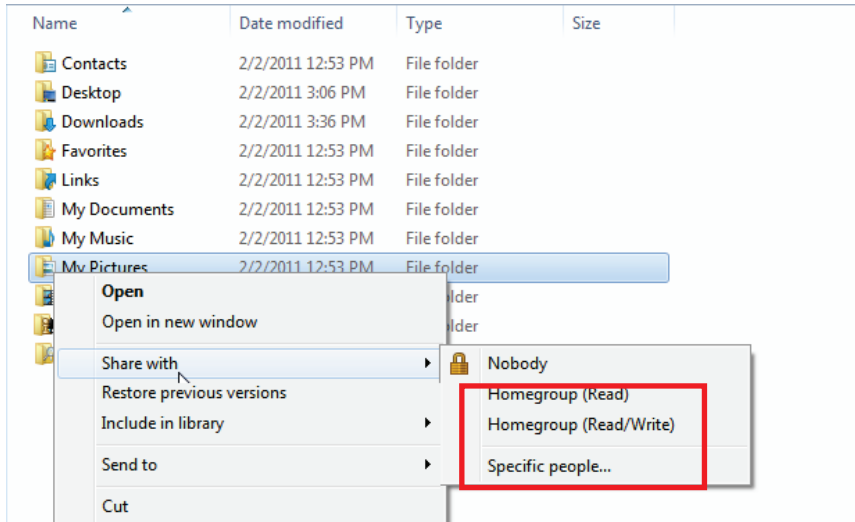
- Pictures Music Videos
 Documents Printers

- Click the **Save changes** button.

5.2.3. Windows 7: Sharing public or personal folders

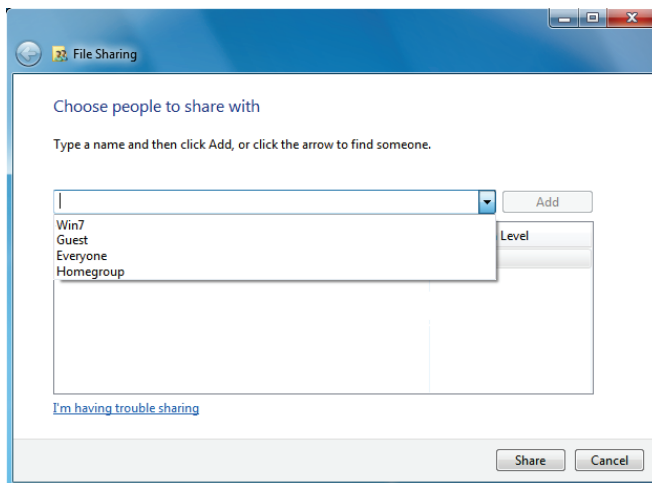
Reminder: In Windows 7, there are two types of folders: **personal or local folders** and **public folders**. A **personal folder** is a folder belonging to a specific user created on the computer, whereas a **public folder** is a folder that can be shared by any other user of the same computer or the same network. In essence, a public folder is shared, and therefore available to everyone for viewing (the minimum authorization level). For sharing **personal folders** (your folder of your own images, for example), you must select the users who will be able to access their contents and set the authorization level, as indicated in the following procedure.

1. Select the folder that you wish to share, without opening it (in this case, your **My Pictures** folders).
2. Right-click the folder. Select **Share with**.



Note: You can select one of the following sharing options: **Homegroup (Read)**, **Homegroup (Read/Write)** or **Specific people**. The homegroup comprises the computers that are part of the Home network.

3. If you enable sharing with **specific people**, select the users who will be able to access the folder.

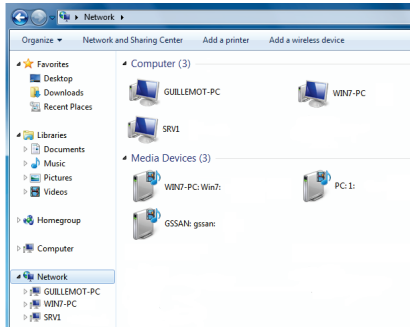


4. In the **File Sharing** window, select the user(s) who will be able to access this folder, then click **Add**.

Note: You can provide access to all users with no restrictions (**Everyone** option) or select specific users previously created on your PC. You can also create new users by clicking **Create a new user...** in the drop-down list.

5. Select the **Permission Level** you wish to assign by clicking on the line for that user: **Reader** (authorization to view only), **Contributor** (authorization to view, add and delete) or **Co-owner** (authorization to view, modify, add and delete).
6. - Click the **Share** button. Be sure to note the path indicated, which will allow for access to the shared folder on the network from another computer.

5.2.4. Computers running Windows 7: Accessing shared folders



1. In the file explorer, accessible via **Start/Computer**, double-click **Network**.

You access the list of the computers on the same network. Use the path indicated by Windows when setting up sharing.

2. Double-click the computer sharing the folders you wish to access.
3. If a password has been defined, enter your **user name** and your **password**.

All shared folders appear. Depending on your authorization level, you can display, modify, add and/or delete shared folders and files.

5.2.5. Windows 7: Sharing a printer

You can put a printer on the network and thereby share it with all computers in your home connected in a network.

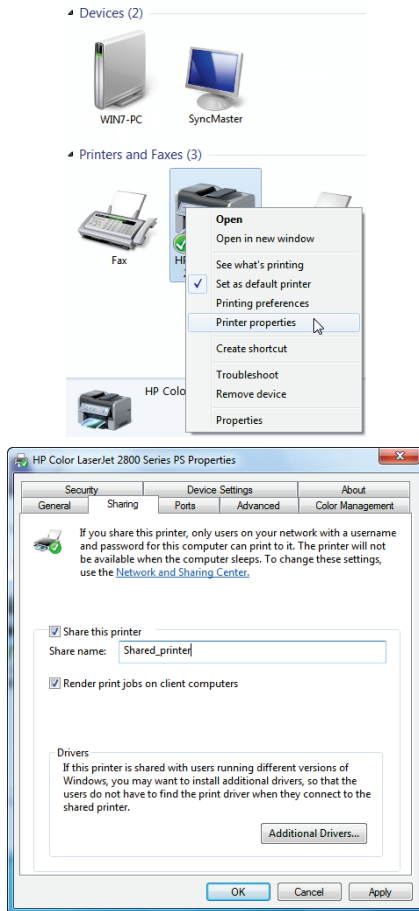


*To access a printer on the network, you must first define the printer's sharing options in the **Network and Sharing Center** (please refer to chapter 5.2.2. **Enabling sharing**). The printer must then be set up for sharing on the computer to which is connected and on which it is installed.*

On the computer connected to the printer:

1. Click **Start/Devices and Printers**.

The list of installed printers is displayed.



2. Right-click the printer and select **Printer properties**.

3. In the **[Printer_ Name] Properties** window, select the **Sharing** tab.

4. Tick the **Share this printer** box.

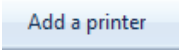
5. Select the name of the printer which will be displayed on the network under **Share name**.

6. Click **Apply**, then click **OK**.

5.2.6. Computers running Windows 7: Accessing the shared printer

On the computers that will use the shared printer:

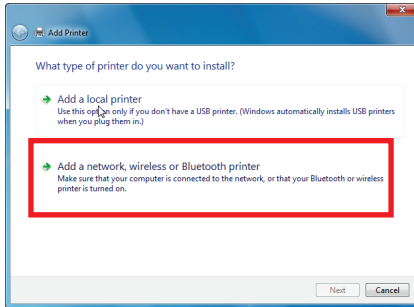
1. Click **Start/Devices and Printers**.



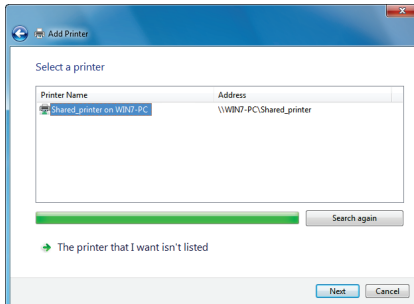
Add a printer

2. Click the **Add a printer** button.

The *Add Printer wizard* appears.



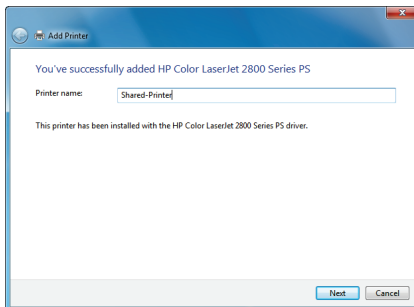
3. Click **Add a network, wireless or Bluetooth printer**.



4. Windows then searches for the shared printers on your network. Select the shared printer.

5. Click **Next**.

6. If necessary, accept installation of the printer's drivers when prompted to do so by Windows.



7. Validate your printer's name, then click **Next**.

8. Tick the **Set as the default printer** box, if you wish.

9. Click **Finish** to close the wizard.

5.3. Computers running Windows Vista: Sharing folders, a printer or an ADSL connection



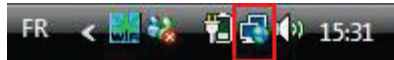
To create a network of computers, share data, a printer or an **ADSL** connection between computers running **Windows Vista**, it is not imperative that the computers belong to the same **workgroup**. However, if you wish to share between **Windows Vista** and an earlier operating system, make sure to define the same workgroup on all computers. For information on how to create a workgroup, please refer to the manual of your Hercules product.

Note: The access paths described hereafter may vary slightly if you have modified the default display in Windows Vista (that is to say, the Start menu properties and the Control Panel display).

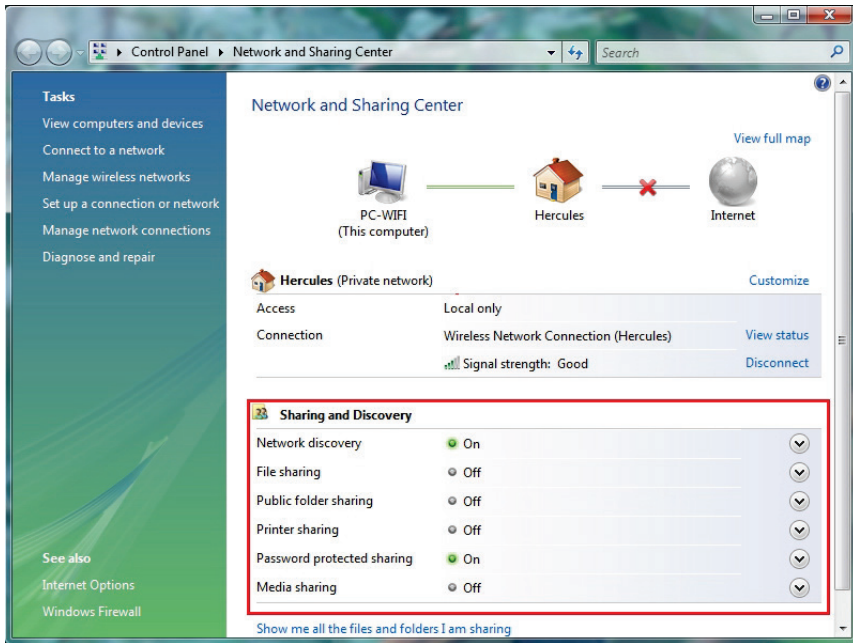
You have connected your computer to a **private network** (as opposed to a **public network**). Therefore, the **discovery** options (namely, the ability to view outside devices and computers and to be seen by other networks) are enabled, but **sharing** options are not. You must therefore enable them manually before you can share your folders, your Internet connection or your printer.

5.3.1. Enabling sharing

Before setting up sharing for your folders, your printer or your Internet connection, you must enable sharing in the **Network and Sharing Center**.

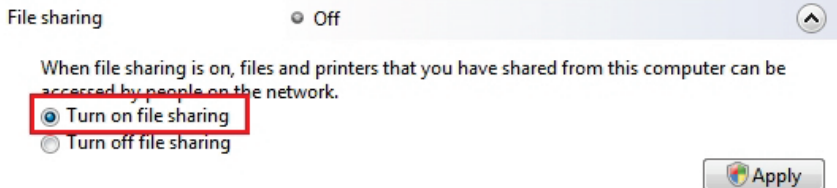


Note: To open the **Network and Sharing Center**, click the network icon in the **Windows taskbar**, then the **Network and Sharing Center** link.



Enabling file sharing


- In the **Sharing and Discovery** zone, click the **Off** link or the button located opposite **File sharing**.
- Select the **Turn on file sharing** radio button.

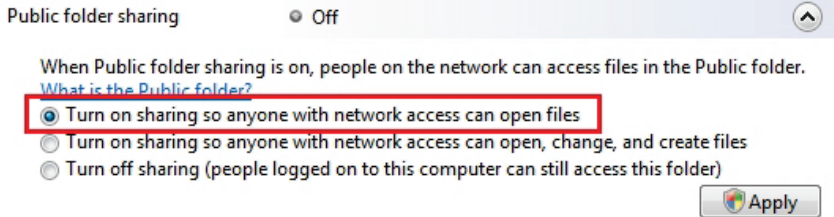


- Click **Apply**. In the Windows Vista confirmation window, click **Continue**.

Enabling public folder sharing

Note: A public folder is a folder which can be shared by other users of the same computer or of the same network.


- In the **Sharing and Discovery** zone, click the **Off** link or the  button located opposite **Public folder sharing**.
- Select the **Turn on sharing so anyone with network access can open files** radio button (they will only be able to consult files) or select **Turn on sharing so anyone with network access can open, change, and create files** (there will be no limitations on the contents of these folders in terms of viewing, making changes and additions or other actions).

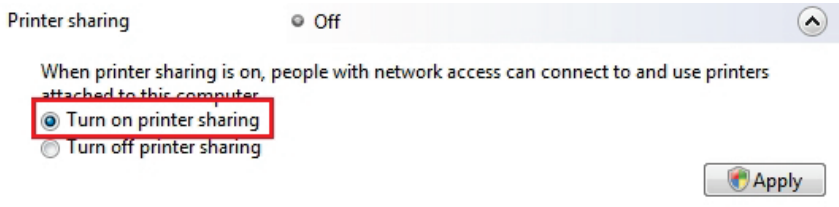


- Click **Apply**. In the Windows Vista confirmation window, click **Continue**.

Enabling printer sharing

Note: To enable printer sharing, you must first have installed a printer.


- In the **Sharing and Discovery** zone, click the **Off** link or the  button located opposite **Printer sharing**.
- Select the **Turn on printer sharing** radio button.



- Click **Apply**. In the Windows Vista confirmation window, click **Continue**.

Enabling media file sharing

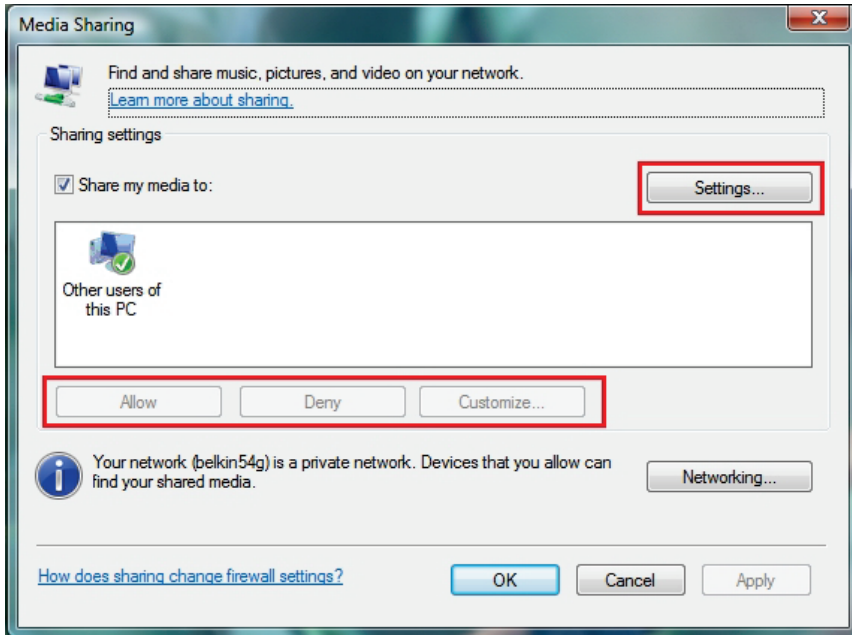
Note: This option allows you to enable sharing of your music, videos and images.

- In the **Sharing and Discovery** zone, click the **Off** link or the  button located opposite **Media sharing**.
- Click **Change...**

When media sharing is on, people and devices on the network can access shared music, pictures, and videos on this computer, and this computer can find those types of shared files on the network.



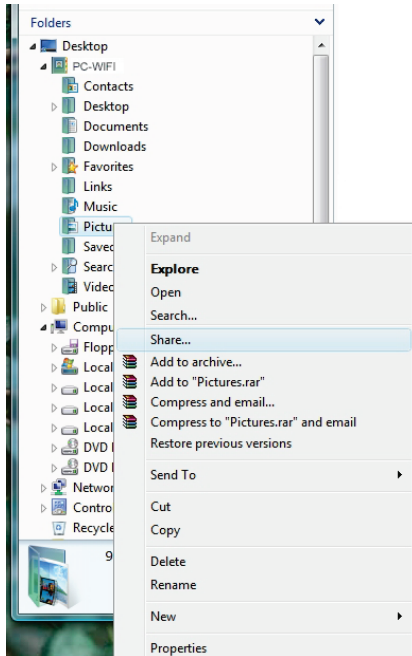
- In the **Media Sharing** window that appears, tick the **Share my media box**.



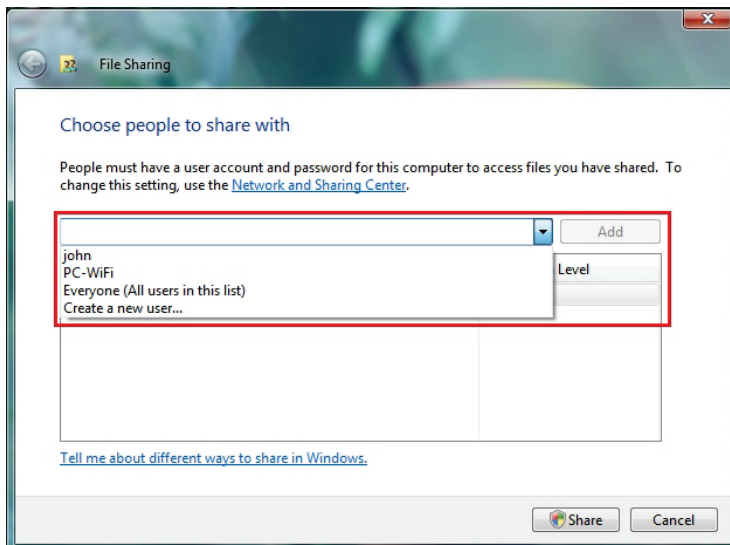
- Click **Apply**. In the Windows Vista confirmation window, click **Continue**.
- In the following window, you can define the different **settings**, such as: authorize or refuse groups of users, set parental controls, select media types to be shared, and so on.
- When you're done, click **Apply**, then **OK**.

5.3.2. Windows Vista: Sharing public or personal folders

Reminder: In Windows Vista, there are two types of folders: **personal or local folders** and **public folders**. A **personal folder** is a folder belonging to a specific user created on the computer, whereas a **public folder** is a folder that can be shared by any other user of the same computer or the same network. In essence, a public folder is shared, and therefore available to everyone for viewing (minimum authorization level). For sharing **personal folders** (your folder of your own images, for example), you must select the users who will be able to access their contents and set the authorization level, as indicated in the following procedure.



1. Select the folder that you wish to share, without opening it. Here, your **Pictures** folder.
2. Right-click the folder. Select **Share**.



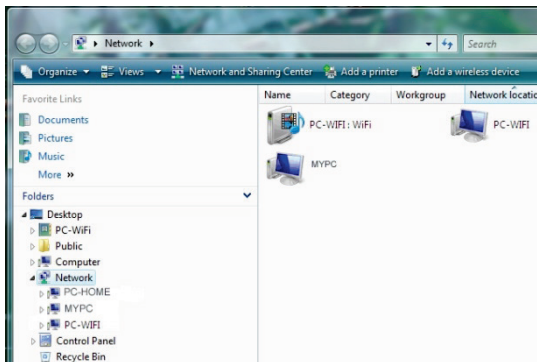
3. In the **File Sharing** window, select the user(s) who will be able to access this folder, then click **Add**.

Note: You can provide access to all users with no restrictions (**Everyone** option) or select specific users previously created on your PC. You can also create new users by clicking **Create a new user...** in the drop-down list.

4. Select the **Permission Level** you wish to assign by clicking on the line for that user: **Reader** (authorization to view only), **Contributor** (authorization to view, add and delete) or **Co-owner** (authorization to view, modify, add and delete).
5. Click **Share**. Be sure to note the path indicated, which will allow for access to the shared folder on the network from another computer. For example: **\\PC-WIFI\Users\My documents\Shared Pictures Folders**.
6. Click **Done**.

The folder is now shared. You can now display all shared folders and files on the computer or the shared files on the network by clicking the links in the **Network and Sharing Center**.

5.3.3. Computers running Windows Vista: Accessing shared folders



1. In the file explorer, accessible via **Start/Computer**, double-click **Network**.

You access the list of the computers on the same network. Use the path indicated by Windows when setting up sharing (for example : **\\PC-WIFI\Users\My documents\Shared Pictures Folders**).

2. Double-click the computer sharing the folders you wish to access.
3. If a password has been defined, enter your **user name** and your **password**.

All shared folders appear. Depending on your authorization level, you can display, modify, add and/or delete shared folders and files.

5.3.4. Windows Vista: Sharing a printer

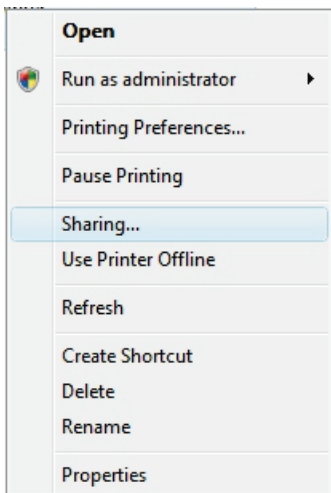
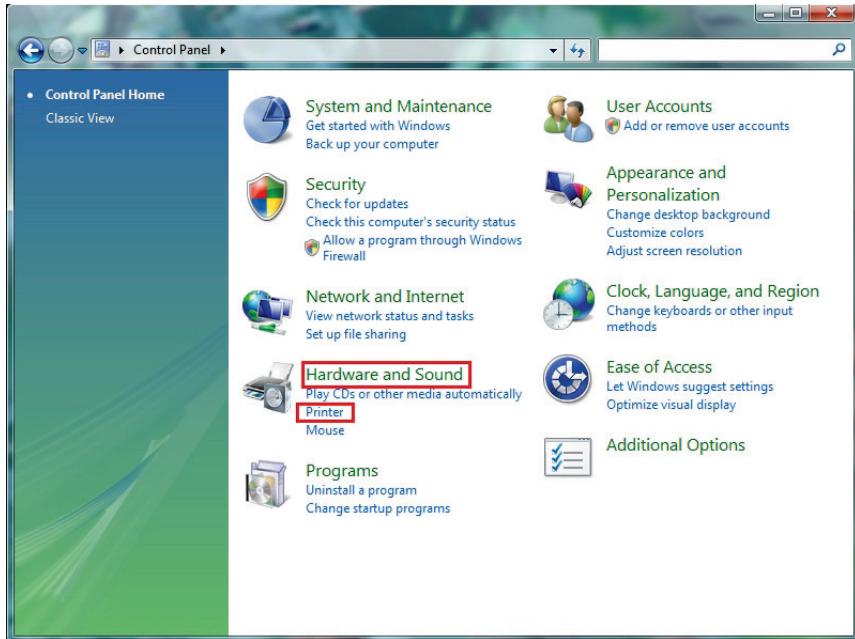
You can put a printer on the network and thereby share it with all computers in your home equipped with a WiFi adapter.



To access a printer on the network, sharing for the printer must first be set up in the **Network and Sharing Center** (please refer to chapter 2.2.1 **Enabling sharing**). The printer must then be set up for sharing on the computer to which is connected and on which it is installed.

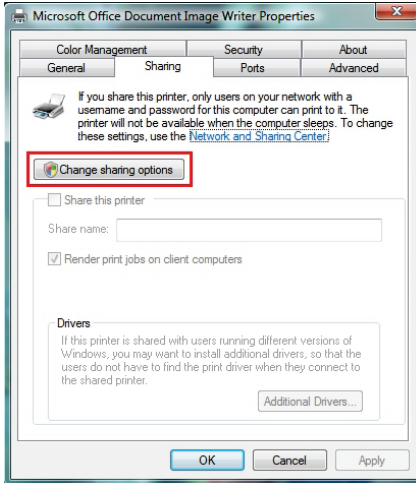
On the computer connected to the printer:

1. Click **Start/Control Panel**.
2. Under the **Hardware and Sound** heading, click the **Printer** link.

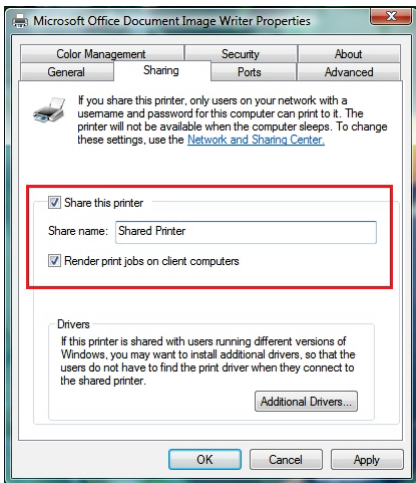


The list of installed printers is displayed.

3. Right-click the printer and select the **Sharing...** option.



4. In the **Printer Properties** window, click the **Change sharing options** button.
5. In the Windows Vista confirmation window, click **Continue**.

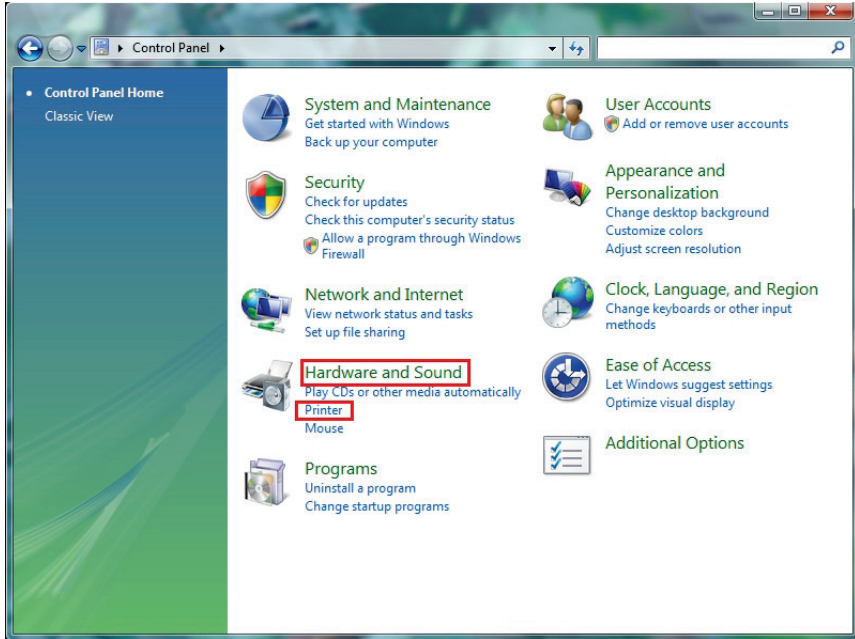


6. Tick the **Share this printer** box.
7. Select the name of the printer which will be displayed on the network under **Share name**.
8. Click **Apply**, then **OK**.

5.3.5. Computers running Windows Vista : Accessing the shared printer

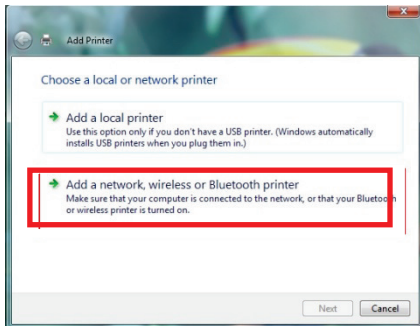
On the computers that will use the shared printer:

1. Click **Start/Control Panel**.
2. Under the **Hardware and Sound** heading, click the **Printer** link.

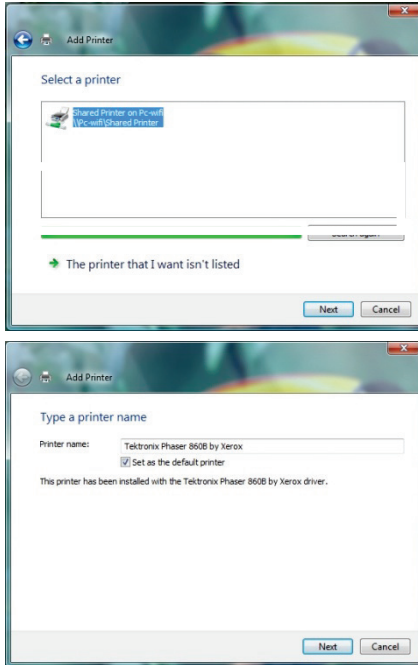


3. Click the **Add a printer** button.

The Add a printer assistant appears.



4. Click **Add a network, wireless or Bluetooth printer**.

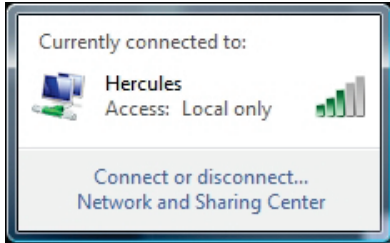


5. Windows searches for the shared printers on your network. Select the shared printer.
6. Click **Next**.
7. if required, accept installation of the printer's drivers when you are being prompted by Windows.
8. Validate the name of your printer, then click **Next**.
9. Click **Finish** to close the assistant.

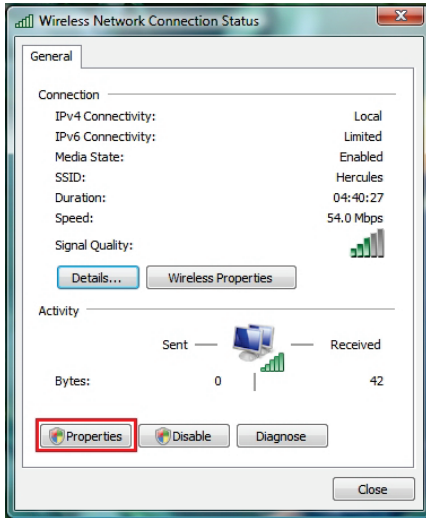
5.3.6. Windows Vista: Sharing an ADSL connection in an Infrastructure type network

Reminder: If you have a Livebox, a modem router or a router connected to a modem and one or more computers, your network will be in **Infrastructure mode** by default. In this mode, the WiFi adapters are connected to your **access point**, which might be your Livebox, your Hercules Modem Router or your Hercules Router connected to a modem. **Infrastructure mode** is ideal for exchanging data, playing online, and also for sharing an Internet connection and/or printer among several computers. Follow the instructions below to finally free yourself from the cable that connects you to your modem... without cutting the links to your ADSL connection. Viva the Wireless Attitude!

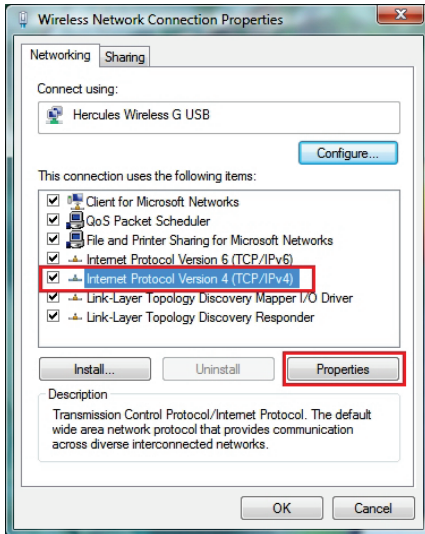
Proceed as follows for each computer that will use the shared Internet connection:



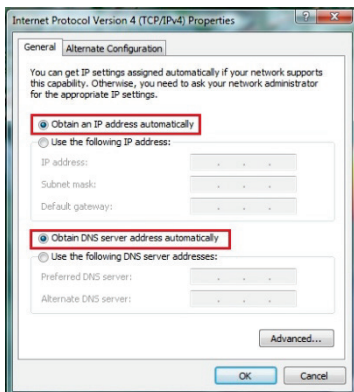
1. Connect to your wireless network (Hercules or Livebox_AAAA, for example).
2. Access the **Network and Sharing Center**. To do so, click the network icon on the Windows taskbar, then click the **Network and Sharing Center** link.
3. Click the **View status link**.



4. In the **Wireless Network Connection Status** window, click **Properties**.
5. In the Windows Vista confirmation window, click **Continue**.



6. In the **Wireless Network Connection Properties** tab, select **Internet Protocol version 4 (TCP/IPv4)**.
7. Click **Properties**.



8. In the **Internet Protocol version 4 (TCP/IPv4)** window, select **Obtain an IP address automatically** and **Obtain DNS server address automatically**.
9. Click **OK** to validate.
10. Do the same for **Internet Protocol version 6 (TCP/IPv6)**.

To access the Internet, simply launch your Internet browser.

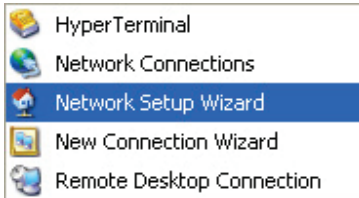
5.4. Computers running Windows XP: Sharing folders, a printer or an ADSL connection

A simple solution for sharing folders, a printer or an **ADSL** connection in Windows XP is to use the **Network Setup Wizard**. This Wizard will help you create a real home network.

Note: the access paths mentioned below may vary slightly if you have modified the default display configuration in Windows XP (meaning the Start menu properties and Control Panel display).

5.4.1. Windows XP: Using the Network Setup Wizard in an Infrastructure network

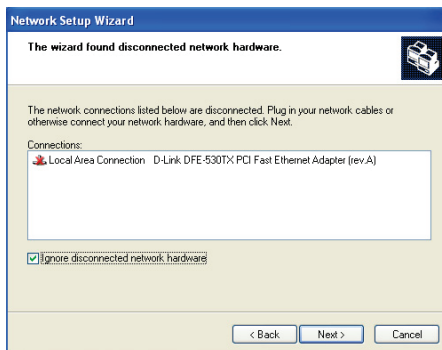
Proceed as follows for each computer:



1. Click **Start/All Programs/Accessories/Communications/ Network Setup Wizard**.

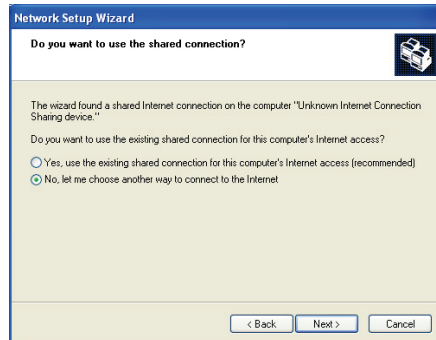
The Network Setup Wizard is launched.

2. Click **Next** twice.



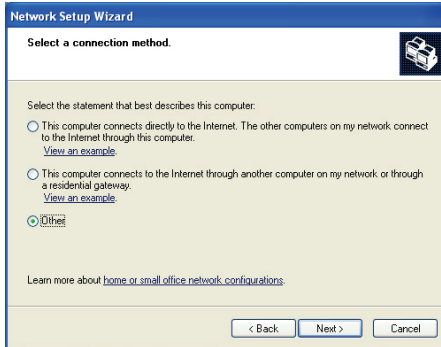
*The window opposite may appear if **The Wizard found disconnected network hardware**.*

3. If your Hercules Wireless N Adapter wireless network connection is not displayed in the list, tick the **Ignore disconnected network hardware** box, then click **Next**. Otherwise, exit the Wizard by clicking **Cancel** and establish the connection from your network device to your router (for more information, please refer to chapter 4. **The WiFi Station N utility**).



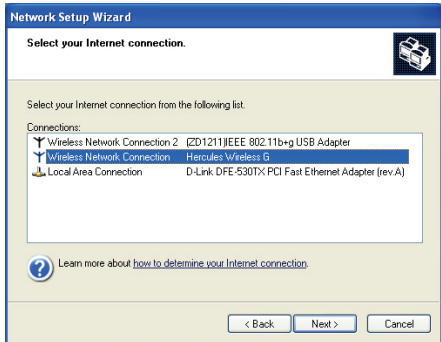
*The window opposite may appear if **The Wizard found a shared Internet connection on the computer**.*

4. Select **No, let me choose another way to connect to the Internet**, then click **Next**.

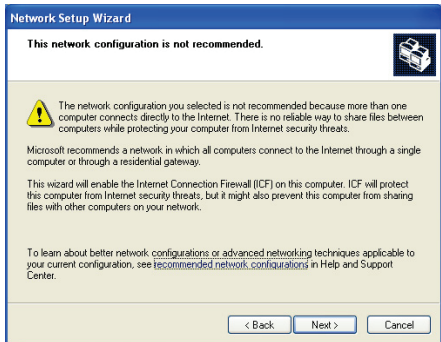


5. In the **Select a connection method** window, select the **Other** option.

6. In the following window, select **This computer connects to the Internet directly or through a network hub**, then click **Next**.

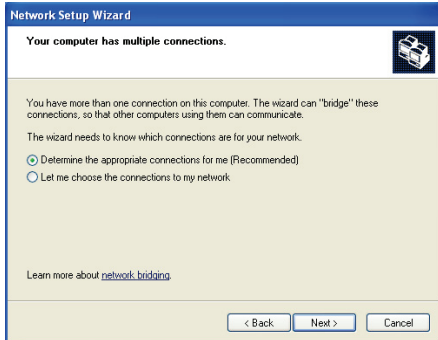


7. If the window opposite appears, select the Hercules Wireless N wireless network connection, then click **Next**.



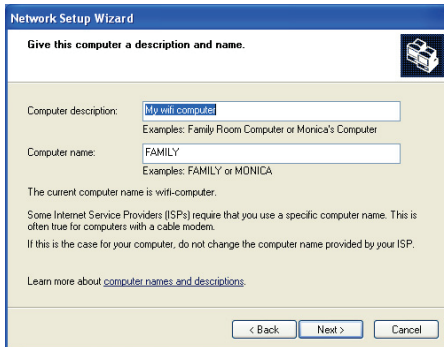
8. When this warning screen appears, ignore it by clicking **Next**.

If you are using the Hercules modem router, your computers are already protected by the integrated firewall.



9. If your computer has at least three connections (or network devices), the window opposite appears. In this case, let the Wizard determine the appropriate connections.

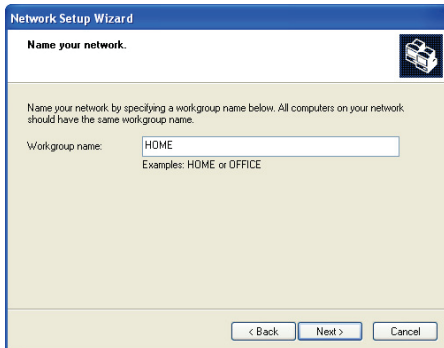
10. Click **Next**.



11. Enter the computer name and a description, if required.

Give the computer a name that is unique and sufficiently distinctive, making it easy to recognize on your network (my-computer, wifi-computer or julie, for example).

12. Click **Next**.



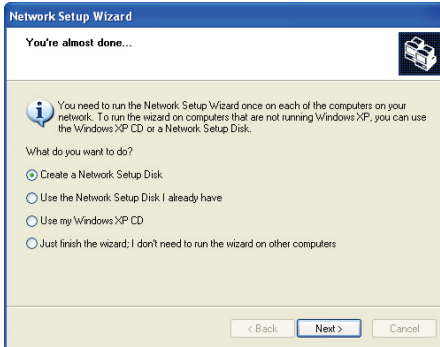
13. Enter the **workgroup** name (HOME, OFFICE or HERCULES, for example) and a description, if required.

The workgroup name must be identical (be sure to respect the case of letters) for all computers you wish to link together in a network.

14. Click **Next**.

15. Verify the configuration settings you have entered in the window that appears, then click **Next**.

The Wizard configures the computer for the home network. This may take a few minutes.

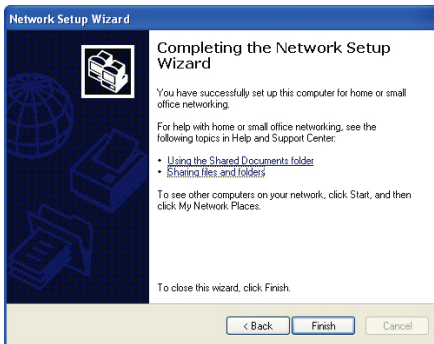


- Before completing the procedure, you may select the **Create a Network Setup Disk** option. This consists of copying this Wizard onto a storage medium (your choice of floppy disk or USB key) so that it can be launched on computers equipped with operating systems other than Windows XP.

This operation is carried out automatically, once you have selected a medium for saving the Wizard.

- Click **Finish** to exit the Wizard.

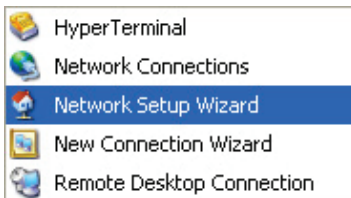
Once the procedure is finished, Windows XP may prompt you to restart your computer.



The procedures described in this chapter are specific to Windows XP. For all other questions related to sharing folders, a printer or an Internet connection, or on using Windows, please refer to the Windows online help utility.

5.4.2. Windows XP: Using the Network Setup Wizard in an *Ad hoc* network

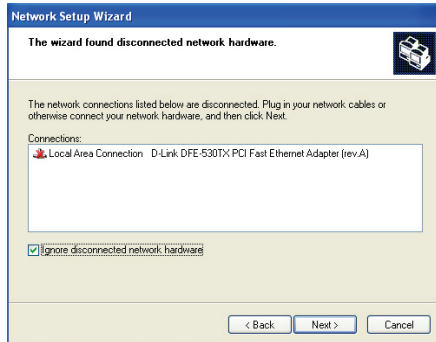
Proceed as follows for each computer:



- Click **Start/All Programs/Accessories/Communications/ Network Setup Wizard**.

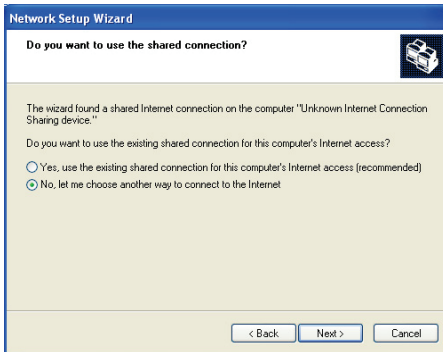
The Network Setup Wizard is launched.

- Click **Next** twice.



The window opposite may appear if **The Wizard found disconnected network hardware**.

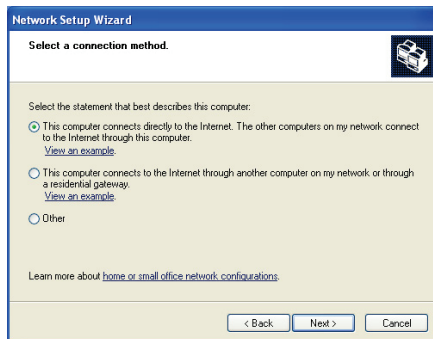
- If your Hercules Wireless N Adapter wireless network connection is not displayed in the list, tick the **Ignore disconnected network hardware** box, then click **Next**. Otherwise, exit the Wizard by clicking **Cancel** and establish the connection from your network device (for more information, please refer to the "The WiFi Station N utility" chapter).



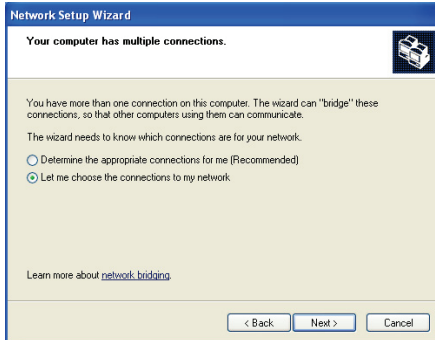
The window opposite may appear if **The Wizard found a shared Internet connection on the computer**.

- Select **No, let me choose another way to connect to the Internet**, then click **Next**.

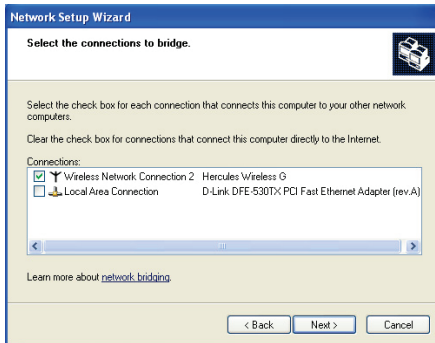
On the computer equipped with the ADSL modem:



- In the **Select a connection method** window, select the **This computer connects directly to the Internet. The other computers on my network connect to the Internet through this computer** option.
- Click **Next**, then select the Internet connection corresponding to your modem. Click **Next** again.

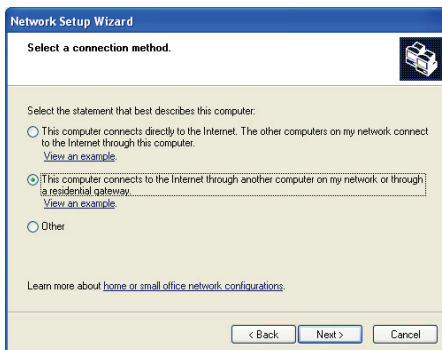


- If your computer has at least three connections (or network devices), the window opposite appears. In this case, select the **Let me choose the connections to my network** option, then click **Next**.

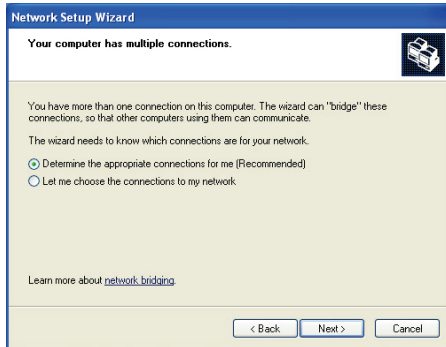


- Among the connections displayed, leave the box corresponding to your **Wireless Network Connection Hercules Wireless N** ticked and deselect the others, then click **Next**.

On the computers that will use the shared Internet connection:



- In the **Select a connection method** window, select the **This computer connects to the Internet through another computer on my network or through a residential gateway** option.
- Click **Next**.



7. If your computer has at least three connections (or network devices), the window opposite appears. In this case, select the **Determine the appropriate connections for me** option.
8. Click **Next**.

Proceed as follows for each computer:

Network Setup Wizard

Give this computer a description and name.

Computer description:
 Examples: Family Room Computer or Monica's Computer

Computer name:
 Examples: FAMILY or MONICA

The current computer name is wifi-computer.

Some Internet Service Providers (ISPs) require that you use a specific computer name. This is often true for computers with a cable modem.

If this is the case for your computer, do not change the computer name provided by your ISP.

Learn more about [computer names and descriptions](#).

< Back Next > Cancel

9. Enter the computer name and a description, if required.

Give the computer a name that is unique and sufficiently distinctive, making it easy to recognize on the network (my-computer, wifi-computer or julie, for example).

10. Click **Next**.

Network Setup Wizard

Name your network.

Name your network: by specifying a workgroup name below. All computers on your network should have the same workgroup name.

Workgroup name:
 Examples: HOME or OFFICE

< Back Next > Cancel

11. Enter the **workgroup** name (HOME, OFFICE or HERCULES, for example) and a description, if required.

The workgroup name must be identical (be sure to respect the case of letters) for all computers you wish to link together in a network.

12. Click **Next**.

13. Verify the configuration settings you have entered in the window that appears, then click **Next**.

The Wizard configures the computer. This may take a few minutes.

If your network is only composed of computers running Windows XP:

Network Setup Wizard

You're almost done...

You need to run the Network Setup Wizard once on each of the computers on your network. To run the wizard on computers that are not running Windows XP, you can use the Windows XP CD or a Network Setup Disk.

What do you want to do?

Create a Network Setup Disk

Use the Network Setup Disk I already have

Use my Windows XP CD

Just finish the wizard; I don't need to run the wizard on other computers

< Back Next > Cancel

14. Select the **Just finish the wizard** option.

*If your network is composed of computers running Windows XP **and/or** computers running Windows 98 SE, Me, 2000):*

15. You can select the **Create a Network Setup Disk** option. This consists of copying this Wizard onto a storage medium (your choice of floppy disk or USB key) so that it can be launched on computers equipped with operating systems other than Windows XP.

This operation is carried out automatically, once you have selected a medium for saving the Wizard.



16. Click **Finish** to exit the Wizard.

Once the procedure is finished, Windows XP may prompt you to restart your computer.

You can now access the Internet simply by launching your browser (Internet Explorer or Netscape Navigator). Sharing folders or a printer, however, requires a few additional operations, but by following the step-by-step instructions in the next chapters, the subtleties involved will no longer remain a mystery to you.



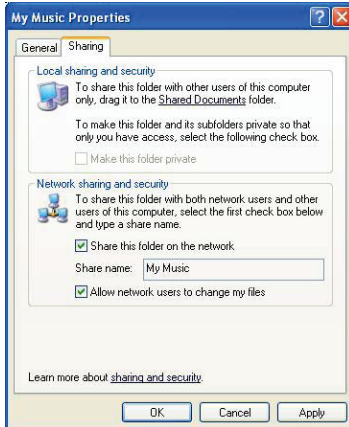
With some Internet service providers, it may happen that your shared connection is not established automatically when you launch your Internet browser. If this occurs, you must first establish an Internet connection on the computer equipped with the modem.



The procedures described in this chapter are specific to Windows XP. For all other questions related to sharing folders, a printer or an Internet connection, or on using Windows, please refer to the Windows online help utility.

5.4.3. Windows XP: Sharing folders

After having configured all of your computers using the Network Setup Wizard, you can now share data located on different disk drives, as long as the user has authorized access.



1. Select the folder you wish to share, without opening it.



2. Right-click the folder. Select **Sharing and Security...**
3. In the **Network sharing and security** section of the **Sharing** tab, tick the **Share this folder on the network** box.
4. On the **Share name** line, enter the folder name as it will be displayed on the network (12 characters maximum to ensure compatibility with other operating systems).

*You can also tick the **Allow network users to change my files** box. In this case, the user will be able to read files and save any changes. If this box is not ticked, the shared files can only be read, and not changed.*



The **[Shared folder name] Properties** window is divided into two sections. **Local sharing and security** only allows for the sharing of files among several users on the same PC. The files are then placed in a **Shared Documents** folder. **Network sharing and security**, however, allows for the sharing of files among more than one computer.



5. Click **Apply** to validate your choices, then click **OK** to close the window.

An icon representing a hand beneath the folder indicates that the folder is now shared.



You can only share the contents of a folder, and not an individual file. We therefore recommend that you create a folder specifically for this purpose where you will put files to be shared.

5.4.4. Computers running Windows XP: Accessing shared folders

To easily access folders set up for sharing by several computers, it is preferable that the computers belong to the same workgroup. In Windows XP, the workgroup name has been defined using the Network Setup Wizard.



1. Click **Start/My Computer**.
2. Click **My Network Places**, then click **View workgroup computers**.
You directly access the list of computers in your workgroup.
3. Double-click the computer that is sharing the folders you wish to access.
All shared folders appear.

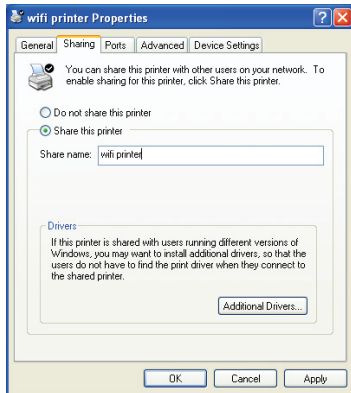
5.4.5. Windows XP: Sharing a printer

It is possible to put a printer on the network and share it with all computers in the house equipped with a WiFi adapter.



To access a printer on the network, the printer must be set up for sharing on the computer where it is connected and installed.

On the computer connected to the printer:

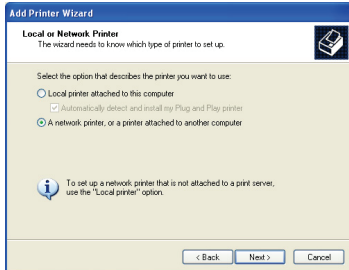


1. Click **Start/Control Panel/Printers and Other Hardware/Printers and Faxes**.
2. Right-click the printer and select **Sharing**.
3. In the **Sharing** tab, select the **Share this printer** radio button and enter a name for your printer.
Give the printer a name that is unique and sufficiently distinctive, making it easy to recognize (my-printer or home laser printer, for example). If one of your computers is running Windows 98 SE, we recommend that the sharing name not exceed 12 characters (without spaces) in order to ensure its compatibility with this operating system.
4. Click **Apply**, then **OK**.

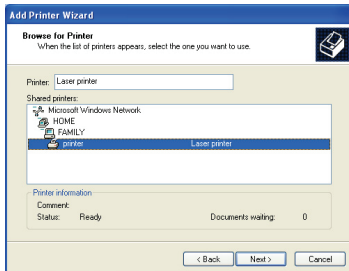
On the computers that will use the shared printer:



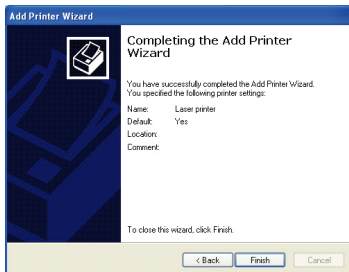
1. Click **Start/Control Panel/Printers and Other Hardware/Printers and Faxes**. In the **Printer Tasks** section, select **Add a printer**.



2. The **Add Printer Wizard** is launched. Click **Next**.
3. Select the **A network printer, or a printer attached to another computer** option, then click **Next**.
4. In the window that appears, click **Next** to launch the search for shared printers.



5. In the list displayed, double-click the computer connected to the printer.
6. Select the shared printer, then click **Next**.
7. If you wish, set the shared printer as the default printer, then click **Next**.

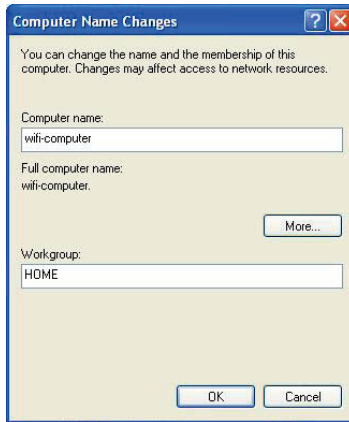
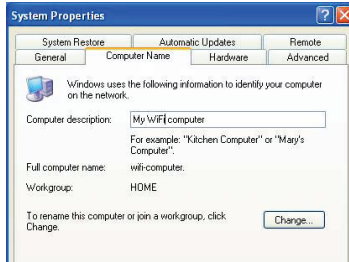


8. Click **Finish** to exit the Wizard.

You can now use the network printer thanks to your WiFi connection. For more information on sharing a printer, please refer to your printer's manual.

5.4.6. Windows XP: Modifying a workgroup name

It may happen that you need to change the name of your workgroup (advanced users only). To do so, proceed as follows:



1. Click **Start/Control Panel/Performance and Maintenance/System**.
2. In the **System Properties** window, select the **Computer Name** tab.
3. Click the **Change...** button.

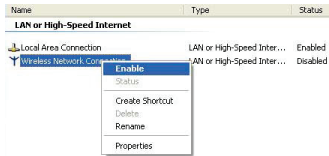
4. In the **Computer Name** zone, enter a name sufficiently distinctive that it can easily be recognized in the list of computers for the **workgroup** (my-computer, wifi-computer or julie, for example).
5. In the **Workgroup** zone, enter a name for the group (HOME, OFFICE or HERCULES, for example).

The workgroup name must be identical (be sure to respect the case of letters) for all computers you wish to link together in a network.

6. A Windows message indicates that the task has been carried out successfully and that you must restart the computer.
7. Repeat this procedure for each computer.

5.4.7. Windows XP: Manually enabling or disabling your adapter's WiFi connection (advanced users)

You can manually enable or disable your adapter's WiFi connection for a variety of reasons: to temporarily avoid connecting to networks, save battery power, etc.



- Click **Start/Connections/Show All Connections**.

Verify that your Hercules Wireless N wireless network connection is listed.

- If its status is **Disabled**, right-click your **Wireless Network Connection** and select **Enable**.

- If its status is **Enabled**, right-click your **Wireless Network Connection** and select **Disable**.

6. GLOSSARY

802.11

Standard established in 1997 by the IEEE (Institute of Electrical and Electronics Engineers, an American organization), defining wireless networks in the 2.4 – 2.48GHz frequency range and offering transfer speeds of between 1 and 2Mbps/s. Revisions have been made to the original standard in order to optimize transfers (this is the case for the 802.11a, 802.11b and 802.11g standards, referred to as physical 802.11 standards) or to ensure better security or improved interoperability of equipment.

802.11b

Standard established by the IEEE (Institute of Electrical and Electronics Engineers, an American organization) in the 802.11 family, allowing for theoretical transfer rates of 11Mbps/s in the 2.4GHz frequency range with a physical range of up to 300m in an environment free from obstructions. The frequency range used is the 2.4GHz band, with 3 radio channels available.

802.11g

Standard established by the IEEE (Institute of Electrical and Electronics Engineers, an American organization) in the 802.11 family, allowing for theoretical transfer rates of 54Mbps/s in the 2.4GHz frequency range with a physical range of up to 300m in an environment free from obstructions. The 802.11g standard offers backwards compatibility with the 802.11b standard, which means that equipment compliant with the 802.11g standard will also work with 802.11b.

802.11i

Standard established by the IEEE (Institute of Electrical and Electronics Engineers, an American organization) in the 802.11 family, whose goal is to improve security by integrating WPA-PSK authentication into AES encryption. This Hercules client is compatible with this standard.

802.11n

Standard established by the IEEE (Institute of Electrical and Electronics Engineers, an American organization) in the 802.11 family, allowing for theoretical transfer rates of 300Mbps/s in the 2.4GHz frequency range with a physical range of up to 300m in an environment free from obstructions. The 802.11n standard offers backwards compatibility with the 802.11b and g standards, which means that equipment compliant with the 802.11n standard will also work with 802.11b and/or g.

Access point

The access point is the heart of your local WiFi network. The system access point is a wireless router whose function is to bring several clients together, which is to say link together all computers equipped with WiFi adapters, thanks to its radio antenna.

Ad hoc mode

Mode allowing several computers equipped with WiFi to communicate directly with one another. This mode is also referred to as Peer to Peer.

ADSL (Asymmetric Digital Subscriber Line)

This equipment, connected to a standard telephone line, offers great speed in terms of sending and receiving data.

AES (Advanced Encryption Standard)

A symmetrical block-based encryption standard supporting different key lengths, this is a powerful, quick and efficient encryption method.

ATM (Asynchronous Transfer Mode)

High-speed transfer mode for fixed-size data.

CCK (Complementary Code Keying)

Advanced encoding scheme for radio waves in wireless networks allowing for high transfer speeds.

Client

Computer equipped with a PCI, USB or PCMCIA WiFi adapter.

DHCP (Dynamic Host Configuration Protocol)

Protocol managing the allocation of IP addresses to computers.

DSSS (Direct Sequence Spread Spectrum)

Technique for using radio frequencies in broad-spectrum wireless networks meant to increase the range of transmissions.

ESSID (Service Set Identifier)

8 to 32-character identifier, often abbreviated as SSID, serving as the unique name for a network shared by clients and the access point.

Ethernet port (or RJ-45)

Port allowing for the connection of two devices via a cable, such as a PC and a router, in order to exchange data packets without collision.

Filter

Device placed between the telephone plug and the modem to improve the quality of telephone communications, which are often degraded by ADSL signals.

Firewall

Combination of software and security devices protecting a network connected to the Internet.

Infrastructure mode

Communication mode consisting of grouping together several computers equipped with WiFi in a network via a wireless access point such as the Hercules ADSL router.

IP address

Unique computer address assigned by the router. Each computer has its own IP address, allowing it to be identified within the network.

LEAP (Lightweight Extensible Authentication Protocol)

Security protocol developed by the company Cisco for the world of Windows. The format used is identifier/password.

MAC address (Message Authentication Code)

Unique address created by the builder of the client adapter or router, serving to identify this element within a network.

MIMO technology (Multiple In, Multiple Out)

Technology used in the 802.11n standard, allowing for the WiFi signal to be shared over several antennas with a corresponding increase in terms of signal range and transfer speeds. Transmission can take place on one channel in the 20MHz frequency band (for theoretical maximum transfer speeds of 144.44Mbps/s) or two channels simultaneously (for theoretical maximum transfer speeds of 300Mbps/s) with 40MHz bandwidth. In both cases, the WiFi signal's coverage and range are the same. The choice of one mode or the other (20 or 40MHz) depends solely on the transmitter used. The Hercules Wireless N key will automatically adapt to the signal received.

NAT (Network Address Translation)

Technique allowing for the masking of IP addresses of local area network computers with respect to the Internet.

OFDM (Orthogonal Frequency Division Multiplexing)

Radio transmission technique providing very high transfer speeds widespread within DSL technology, in the wireless terrestrial distribution of television signals and adopted for the high-speed 802.11 wireless communication standard.

PPPoA (Point-to-Point Protocol over ATM)

Protocol allowing for connection to the Internet of computers linked over an ATM network, while still identifying the user.

PPPoE (Point-to-Point Protocol over Ethernet)

Protocol allowing for connection to the Internet of computers linked over an Ethernet network via a high-speed modem.

Static IP

Permanent IP address assigned to a computer by the access supplier.

Subnet mask

Part of an IP address indicating the class of the network used (class C, type 255.255.255.0 for a local area network).

TKIP (Temporal Key Integrity Protocol)

The WPA standard uses the TKIP protocol, which consists of regenerating new keys for each data packet, whereas WEP uses a system based on a fixed key.

UPnP (Universal Plug n' Play)

Protocol allowing for the connection to one another of many computers and peripherals available on a network.

WEP (Wired Equivalent Privacy)

Security protocol for wireless networks using encryption based on a 64-bit, 128-bit or 256-bit fixed key used only once, at the start of the decryption phase. To decode a transmission, each wireless network client must use the same 64, 128 or 256-bit key. WEP is part of the 802.11 standard with a view to ensuring authentication (access is only authorized for those who know the WEP key) and confidentiality (encryption). An encryption key is composed of numbers 0 to 9 and letters A to F (example: A123BCD45E).

WiFi (Wireless Fidelity)

An abbreviation of Wireless Fidelity, WiFi is the commercial name adopted by the WECA (Wireless Ethernet Compatibility Alliance), an organization responsible for maintaining the interoperability of equipment in a wireless local area network (WLAN) compliant with the IEEE 802.11 standard. Thus, a WiFi network is actually a 802.11 network. In practice, WiFi allows for the connection of laptop computers, desktop computers or Personal Digital Assistants (PDAs) many tens of meters distant from one another via an access point, allowing them to communicate with one another without any cables and exchange data at high speeds.

Wi-Fi Direct™

A Wi-Fi Alliance certification mark that enables two or more devices featuring this technology to establish a wireless connection, without requiring a hotspot or an Internet connection, and to exchange, synchronize and display multimedia contents (videos, music files or photos) or print data.

WiFi Manager

Utility developed by Hercules to configure and view settings for the Hercules Modem Router.

WiFi Router

Device installed at the heart of a WiFi network, allowing for the connection of several computers equipped with WiFi adapters for the exchange of data.

WiFi Station N

Utility developed by Hercules to define, verify and configure all connection and security settings regarding your WiFi installation.

WLAN (Wireless Local Area Network)

Wireless local area network, generally employing the 802.11b, g or n standards.

WMM (Wi-Fi Multimedia)

Function certified by the Wi-Fi Alliance, which aims to define the levels of priority according to available bandwidth. Thus, Voice over IP (Priority 1) will take precedence over the transmission of video data (Priority 2), which will itself take precedence over applications using the network, such as Internet browsing (Priority 3). Last in terms of priority are background task applications, such as printing jobs or downloads (Priority 4).

Workgroup

Group of computers with which you wish to communicate or share resources such as folders, a printer or an Internet connection. To be part of a workgroup, computers must have the same group name.

WPA (WiFi Protected Access)

Wireless network security standard put in place by manufacturers, employing a data encryption algorithm relying on dynamic key management, which was lacking in WEP, the difference being that once communication is established, the key changes randomly for enhanced security.

WPA2 (WiFi Protected Access 2)

Security standard for wireless networks based on the WPA standard, which adds support for the TKIP or AES encryption algorithm, for heightened security.

WPA-PSK (WiFi Protected Access-Pre-Shared Key)

Latest-generation heightened security protocol specially designed for use in environments such as a small office or the home, based on a pre-shared key (a single password). This key is also used for TKIP or AES data encryption.

WPS (Wi-Fi Protected Setup™)

Technology standardized by the Wi-Fi Alliance, which aims to simplify the connection and configuration of a wireless network while at the same time maintaining a high level of security. This technology allows the user to enable protection of a WiFi network via a single button located on the WiFi client, or via entry of a PIN code in the software supplied with the router.

Log on now to our website (www.hercules.com) to download the latest driver and software versions, consult the list of Frequently Asked Questions (FAQs) relating to your adapter and access User Manual updates. You can also discover the entire Hercules range and get information on upcoming products.

7. TECHNICAL SUPPORT

If you encounter a problem with your product, please go to <http://ts.hercules.com> and select your language. From there you will be able to access various utilities (Frequently Asked Questions (FAQ), the latest versions of drivers and software) that may help to resolve your problem. If the problem persists, you can contact the Hercules products technical support service ("Technical Support"):

By email:

In order to take advantage of technical support by email, you must first register online. The information you provide will help the agents to resolve your problem more quickly.

Click **Registration** on the left-hand side of the Technical Support page and follow the on-screen instructions.

If you have already registered, fill in the **Username** and **Password** fields and then click **Login**.

By telephone (if you do not have Internet access):

United Kingdom	08450800942 Charged at local rate	Monday to Saturday from 8 a.m. to 7 p.m.
United States	1-866-889-5036 Free	Monday to Friday from 9 a.m. to 8 p.m. Saturday from 8 a.m. to 2 p.m. (Eastern Standard Time) Monday to Friday from 6 a.m. to 5 p.m. Saturday from 5 a.m. to 11 a.m. (Pacific Standard Time)
Canada	1-866-889-2181 Free	Monday to Friday from 9 a.m. to 8 p.m. Saturday from 8 a.m. to 2 p.m. (Eastern Standard Time) Monday to Friday from 6 a.m. to 5 p.m. Saturday from 5 a.m. to 11 a.m. (Pacific Standard Time)
Denmark	80887690 Free	Monday to Saturday from 9 a.m. to 8 p.m. (English)
Sweden	0200884567 Free	Monday to Saturday from 9 a.m. to 8 p.m. (English)
Finland	0800 913060 Free	Monday to Saturday from 10 a.m. to 9 p.m. (English)

Hours of operation and telephone numbers are subject to change. Please visit <http://ts.hercules.com> for the most up-to-date Technical Support contact information.

8. WARRANTY

Worldwide, Guillemot Corporation S.A. ("Guillemot") warrants to the consumer that this Hercules product will be free from material defects and manufacturing flaws for a period of two (2) years from the original date of purchase. Should the product appear to be defective during the warranty period, immediately contact Technical Support, who will indicate the procedure to follow. If the defect is confirmed, the product must be returned to its place of purchase (or any other location indicated by Technical Support).

Within the context of this warranty, the consumer's defective product will, at Technical Support's option, be either repaired or replaced. Where authorized by applicable law, the full liability of Guillemot and its subsidiaries (including for indirect damages) is limited to the repair or replacement of the Hercules product. The consumer's legal rights with respect to legislation applicable to the sale of consumer goods are not affected by this warranty.

This warranty shall not apply: (1) if the product has been modified, opened, altered, or has suffered damage as a result of inappropriate or abusive use, negligence, an accident, normal wear, or any other cause not related to a material defect or manufacturing flaw; (2) in the event of failure to comply with the instructions provided by Technical Support; (3) to software not published by Guillemot, said software being subject to a specific warranty provided by its publisher.

Trademarks

Hercules® is a registered trademark of Guillemot Corporation S.A. Wireless Attitude™! is a trademark of Guillemot Corporation S.A. Microsoft® Windows® 7, XP and Vista are either trademarks or registered trademarks of Microsoft Corporation in the United States and/or other countries. All other trademarks and brand names are hereby acknowledged and are property of their respective owners. Illustrations not binding.

Declaration of conformity with EU directives

This device can be used in: AT, BE, FR, DE, IE, IT, LU, NL, PL, ES, SE, GB, FI, CH.

Hereby, GUILLEMOT CORPORATION, Carentoir France, declares that this **Hercules HWNum-300 v2** is in compliance with the essential requirements and other relevant provisions of Directive 1999/5/EC. The Declaration of Conformity can be consulted at this website address:

ftp://ftp.hercules.com/wifi/DoC/HWNUm-300/DoC-eng_Hercules_HWNum-300v2.pdf



Hercules is a division of Guillemot Corporation.

EUROPEAN USERS:

This equipment has been tested and found to comply with Directive 1999/5/EC of the European Parliament and of the Council on radio equipment and telecommunications terminal equipment and the mutual recognition of their conformity. After assessment, the equipment has been found to comply with the following standards: EN 300.328 (radio), EN 301 489-1, EN 301 489-17 (electromagnetic compatibility) and EN 60950 (safety). This equipment may be used in all European Union countries and in all countries applying Directive 1999/5/EC, without restriction, with the exception of the following countries:

FRANCE:

When this equipment is used outdoors, output power is limited to within the frequency bands listed below. For more information, consult the ART website: www.art-telecom.fr.

Location	Frequency band (MHz)	Power (EIRP)
Indoor (no restrictions)	2400 – 2483.5	100mW (20dBm)
Outdoor	2400 – 2454	100mW (20dBm)
	2454 – 2483.5	10mW (10dBm)

Operation of this equipment in a residential environment may give rise to radio interference; if so, it is incumbent upon the user to rectify the situation.

ITALY:

This device complies with the National Radio Interface and the requirements of the Frequency Allocation Table. Use of this wireless product outside of the boundaries of the owner's property requires a general authorization. For more information, consult the website www.comunicazioni.it.

Environmental Protection Recommendation



At the end of its working life, this product should not be disposed of with standard household waste, but rather dropped off at a collection point for the disposal of Waste Electrical and Electronic Equipment (WEEE) for recycling.

This is confirmed by the symbol found on the product, user manual or packaging.

Depending on their characteristics, the materials may be recycled. Through recycling and other forms of processing Waste Electrical and Electronic Equipment, you can make a significant contribution towards helping to protect the environment.

Please contact your local authorities for information on the collection point nearest you.

Copyright

© Guillemot Corporation S.A. 2012. All rights reserved.

This publication may not be reproduced in whole or in part, summarized, transmitted, transcribed, stored in a retrieval system, or translated into any language or computer language, in any form or by any means, electronic, mechanical, magnetic, photocopying, recording, manual or otherwise, without the prior written permission of Guillemot Corporation S.A.

Disclaimer

Guillemot Corporation S.A. reserves the right to make changes to specifications at any time and without notice. The information provided by this document is believed to be accurate and reliable. However, no responsibility is assumed by Guillemot Corporation S.A. either for its use or for the infringement of patents or other rights of third parties resulting from its use. This product may exist in a light or special version for PC integration or other purposes. Certain functions detailed in this manual may not be available in these versions. Wherever possible, a README.TXT will be included on the installation CD-ROM detailing the differences between the supplied product and the product described in the present documentation.

End-user software license Agreement

IMPORTANT: please read the Agreement carefully prior to opening and installing the Software. By opening the Software package, you agree to be bound by the terms of this Agreement. The Software enclosed in this package is licensed, not sold, and is only available under the terms of the present license Agreement. If you do not agree with the terms hereafter, you must promptly return the Software within 15 days, together with the entire contents of the box, to the place of purchase.

The Guillemot Corporation S.A. Software (hereafter named the "Software") is copyrighted by Guillemot Corporation S.A. All rights are reserved. The term "Software" refers to all documentation and related material, including drivers, executable programs, libraries and data files. The purchaser is granted a license to use the Software only. The licensee also agrees to be bound by the terms and conditions of the present Agreement concerning copyright and all other proprietary rights for any third party Software, documentation and related material included in the Software package.

Guillemot Corporation S.A. reserves the right to terminate this license in the event of failure to comply with any of the terms or conditions laid out in the present Agreement. On termination, all copies of the Software shall immediately be returned to Guillemot Corporation S.A.; the purchaser remaining liable for any and all resulting damages.

License:

1. The license is granted to the original purchaser only. Guillemot Corporation S.A. retains all title to and ownership of the Software and reserves all rights not expressly granted. The licensee is not permitted to sub-license or lease any of the rights that are hereby granted. Transfer of the license is permitted, provided that the transferor does not retain any part or copy of the Software and the transferee accepts to be bound by the terms and conditions of the present Agreement.
2. The licensee may only use the Software on a single computer at any time. The machine-readable portion of the Software may be transferred to another computer provided it is previously erased from the first machine and there is no possibility that the Software can be used on more than one machine at any one time.
3. The licensee acknowledges the copyright protection belonging to Guillemot Corporation S.A. The copyright notice must not be removed from the Software, nor from any copy thereof, nor from any documentation, written or electronic, accompanying the Software.
4. The licensee is granted the right to make one back-up copy of the machine-readable portion of the Software on the condition that all copyright and proprietary notices are also reproduced.
5. Except where the present Agreement expressly permits, the licensee is strictly prohibited from engaging in, nor may he permit third parties to engage in, the following: providing or disclosing the Software to third parties; providing use of the Software in a network, multiple PCs, multi-user or time-sharing arrangement where the users are not individual licensees; making alterations or copies of any kind of the Software; making any attempt to disassemble, de-compile or reverse engineer the Software in any way or form, or engaging in any activity aimed at obtaining underlying information not visible to the user during normal use of the Software; making copies or translations of the User Manual.