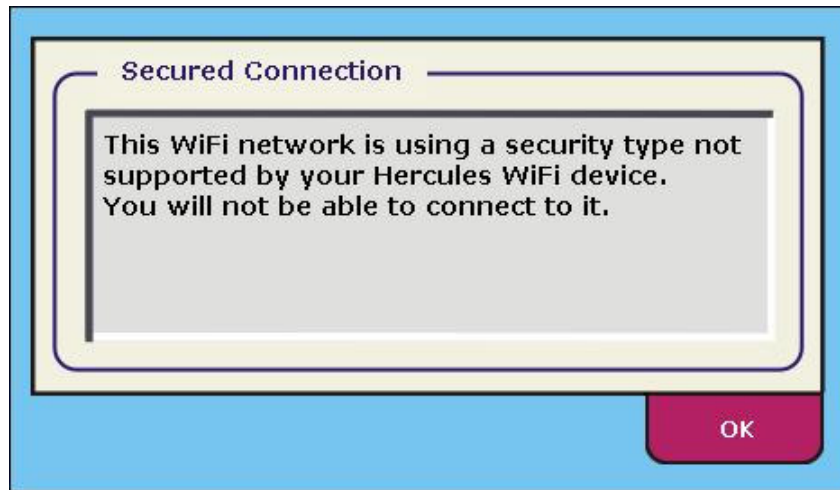
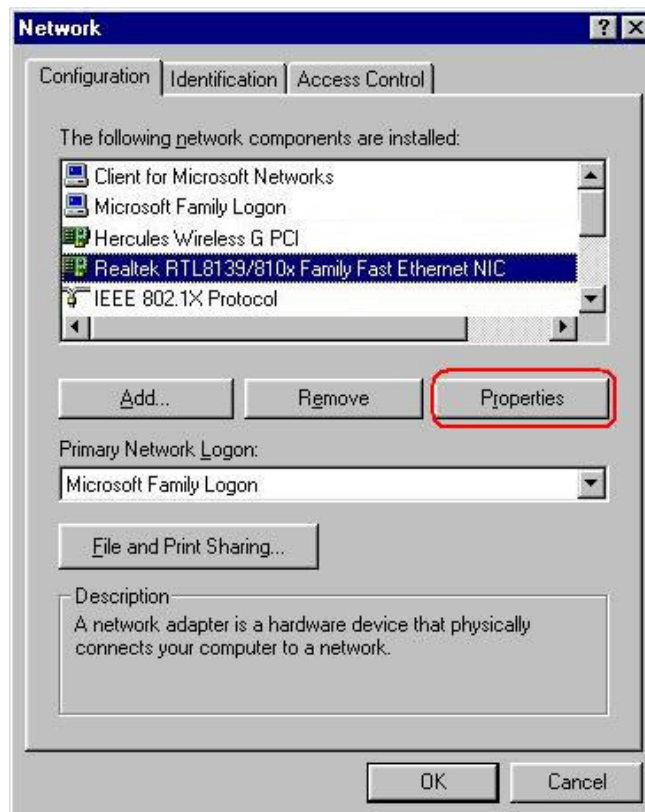


I have a Windows 98 system and when I try to connect to my network which use a security key (WEP or WPA) I have the following message “This Wifi network is using a security type not supported by your Hercules WiFi device. You will not be able to connect to it.”

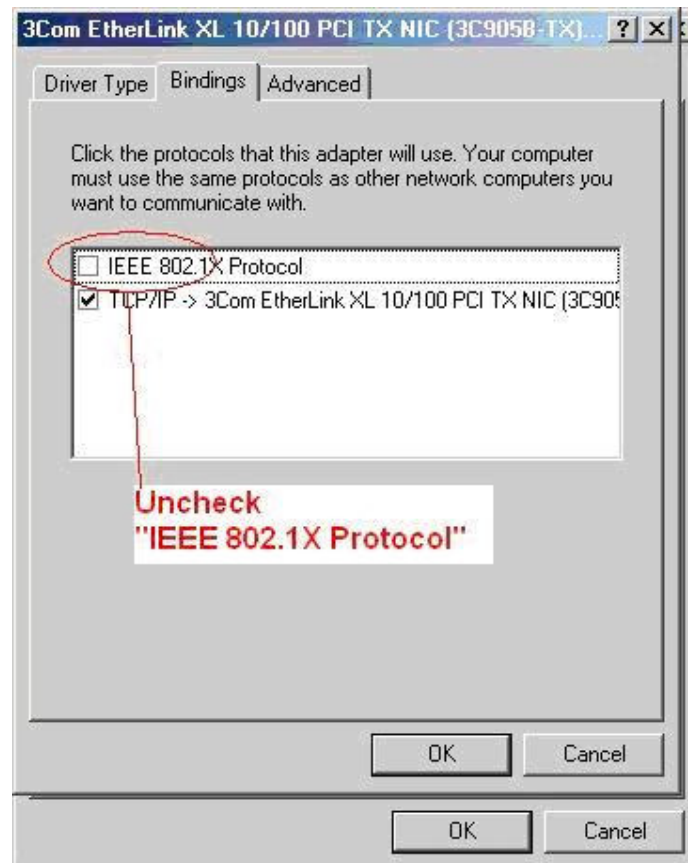
If you have the message bellow you need to install manually a security protocol that can be found in the WiFi Station folder.



First, open the network settings (*Start/Settings/Control Panel/Networks*) and select your Ethernet board (not your Hercules Wireless G card), then right click on it and choose the “*Properties*” button.



In the “Bindings” tab you have to uncheck the “IEEE 802.1X Protocol”.

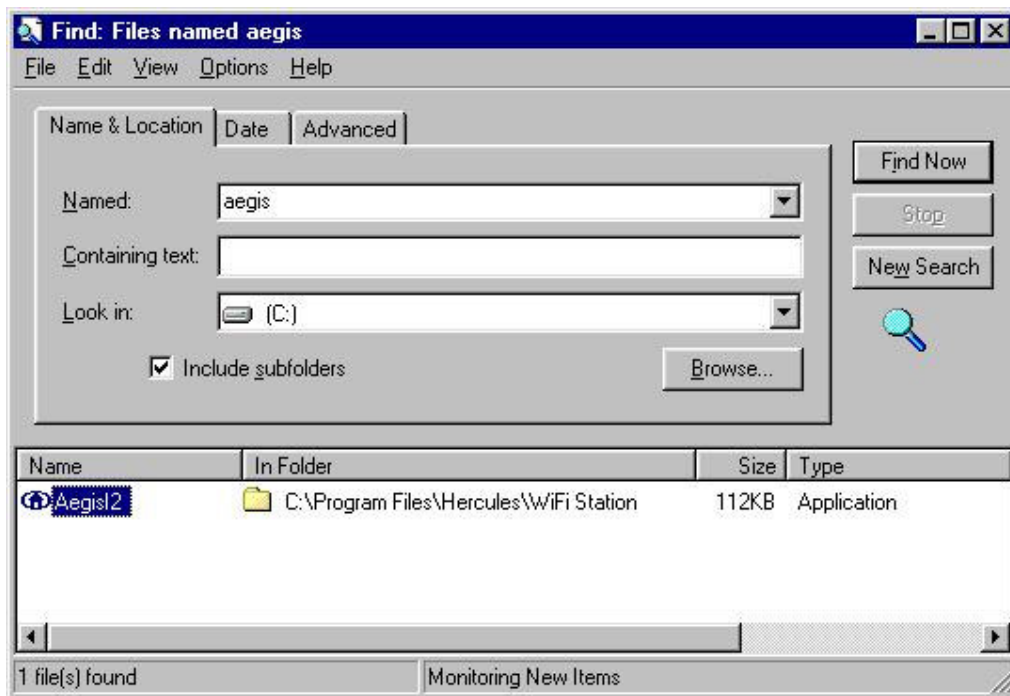


You will be prompted to reboot your computer.

To install the security protocol you have to open the *Start* menu, then *Find and File or Folder...* option, as in the screenshot below.



In the *Find* window enter the word *aegis* and click on the *Find now* button. By default, the file can be found in C:\Program Files\Hercules\WiFi Station. So if you didn't change the path during installation you can go directly to the WiFi Station folder.



Double click on the *Aegis12* file and then *Install* in the window that will open. If you see the message "Status: Protocol installed" it's recommended to first uninstall the protocol and the install it again. You will be asked to reboot your PC after the installation.



Now you will be able to connect to any secured network that uses a WEP or WPA key.