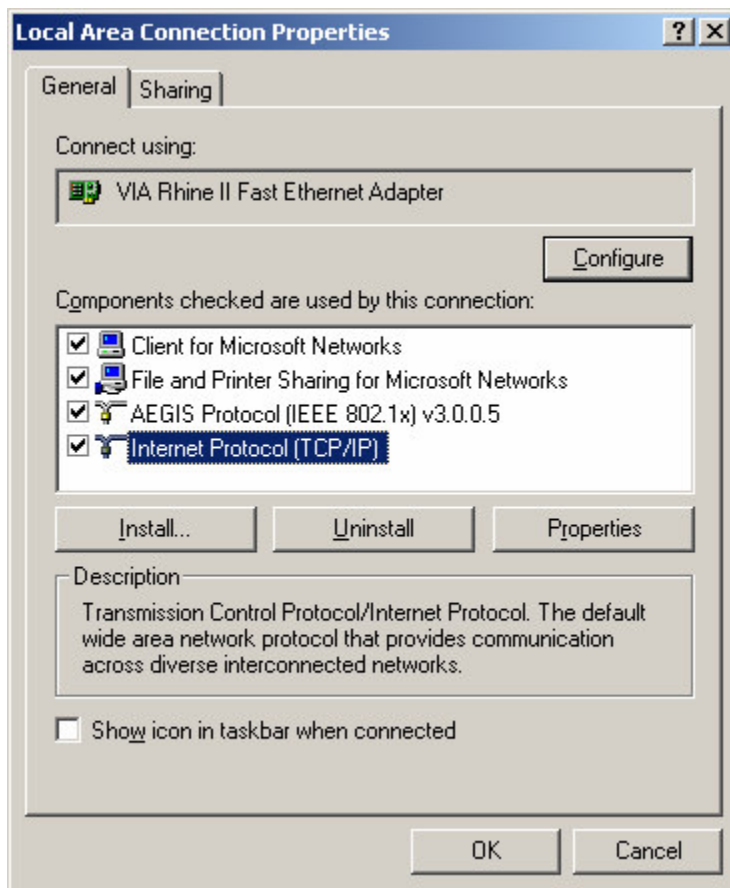


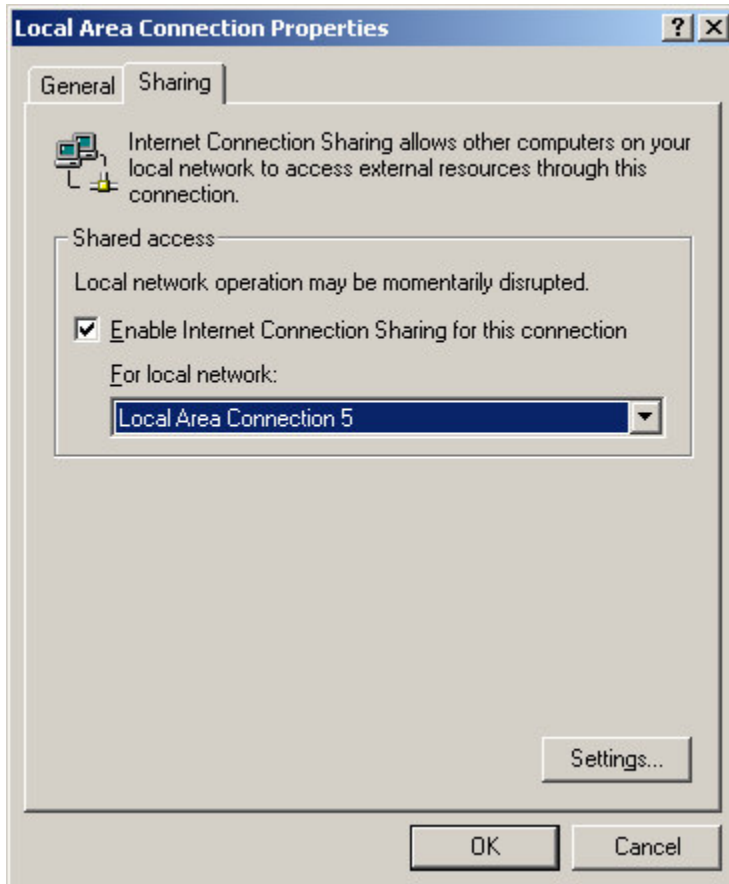
How can I share my Internet connection using Hercules Wireless G devices from Windows 2000 to a system running XP (in an Ad-Hoc network)?

These are the steps to be followed:

From the computer on which you have installed the Internet Connection, equipped with the **Windows 2000** system, please select “*Control Panel*” from Start - Parameters and choose “*Network & Dial-Up Connection*”. Right click on your Internet Connection, and choose “*Properties*”.

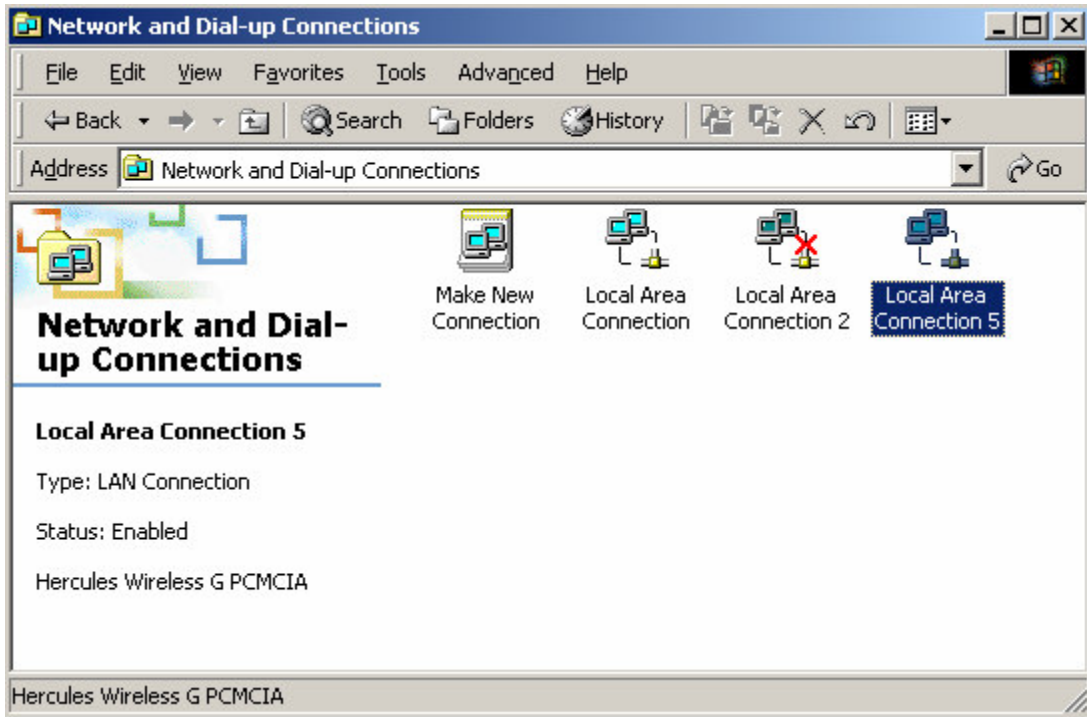


Here please select the “*Sharing*” tab and check the “*Enable Internet Connection Sharing for this connection*” option. Then choose your Hercules Wireless G connection in the « *For local network* » drop-down list. Click *OK* for validation.



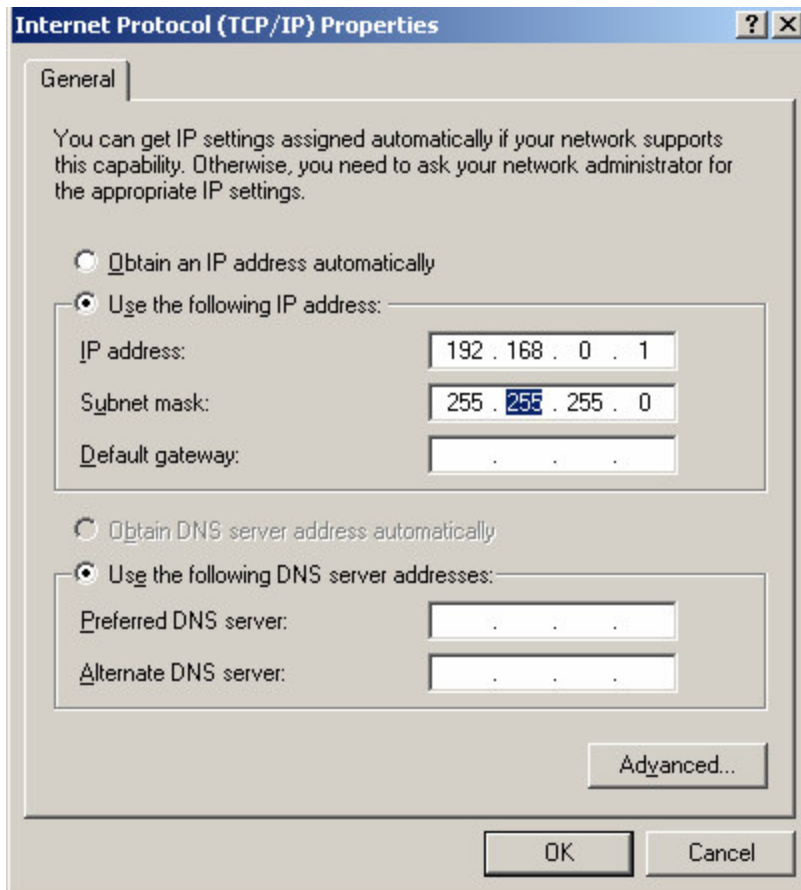
Hint:

In order to check which one of the connections present in "Network and Dial-up Connection" is the Hercules Wireless G you should select them one by one and check the adaptor in the left part of your window.



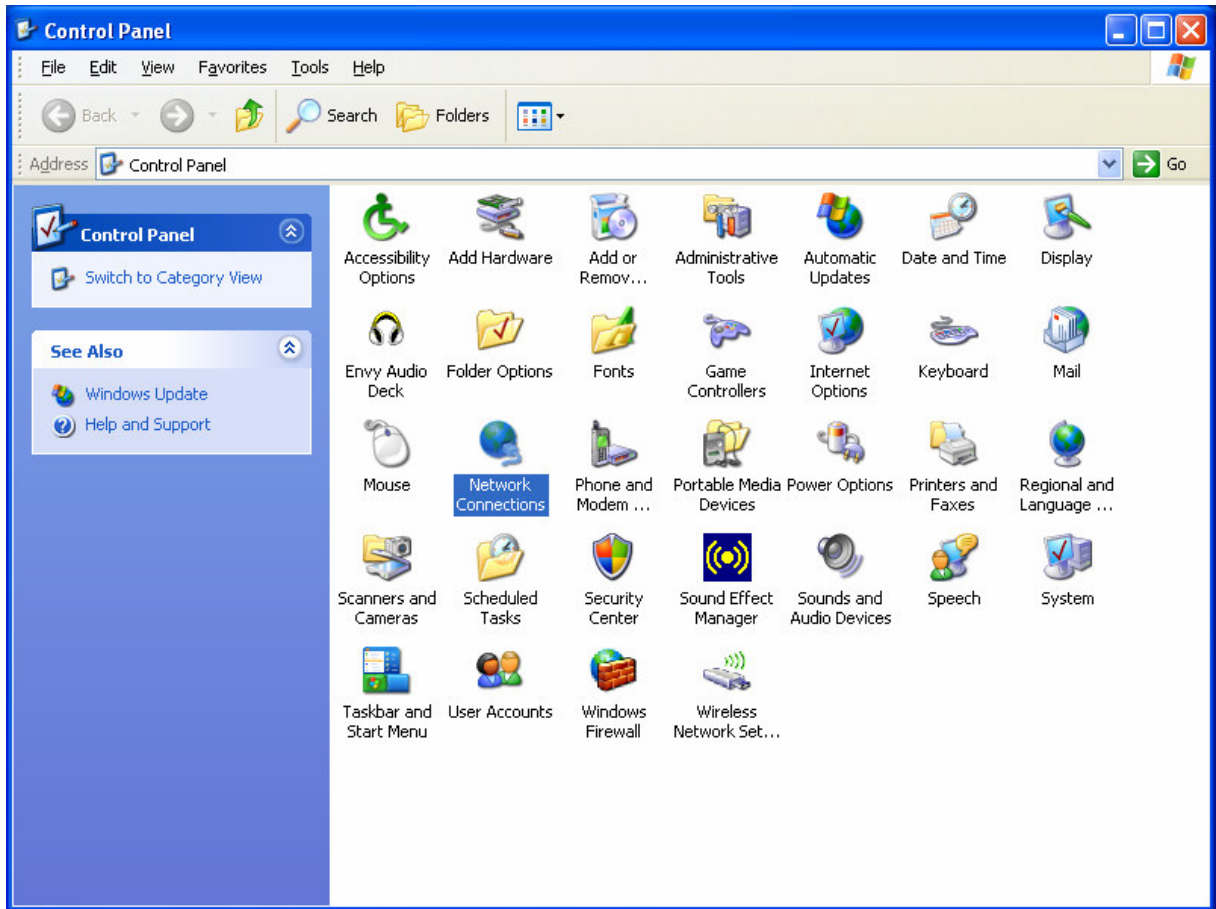
From the same computer choose again “*Control Panel*” and “*Network & Dial-Up Connection*” and then the “*Hercules Wireless G*” connection’s *Properties*.

From the first tab, “*General*” please select “*Internet Protocol (TCP/IP)*” and then click on the “*Properties*” button. Now you have to enter manually the IP address for your WiFi connection, as follows: IP address – 192.168.01, Subnet Mask – 255.255.255.0.

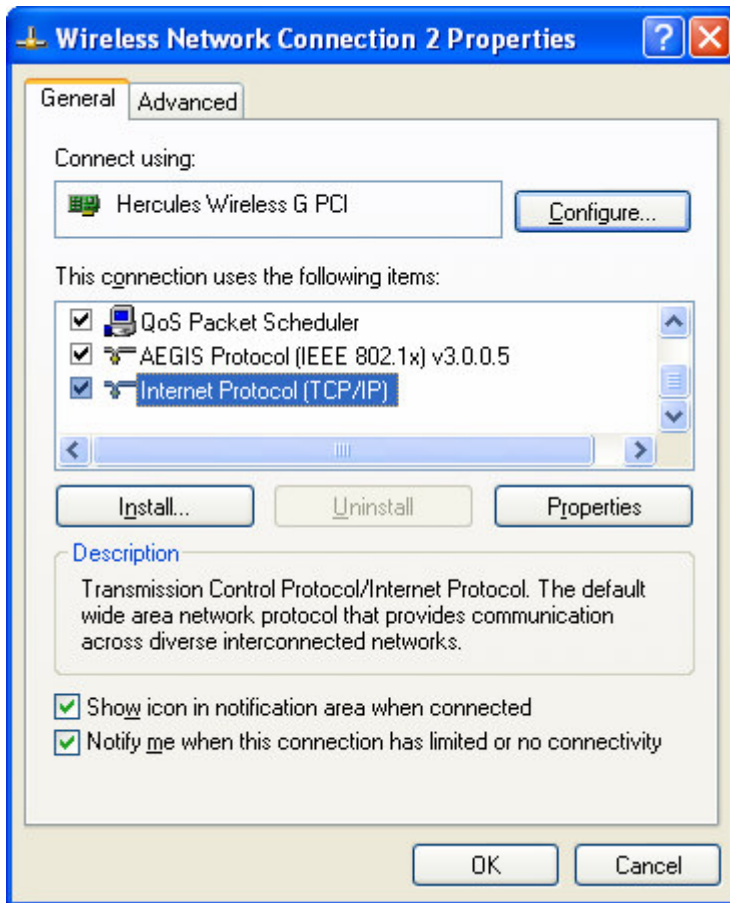


You can leave the *Gateway* address empty. Click *OK* for validation.

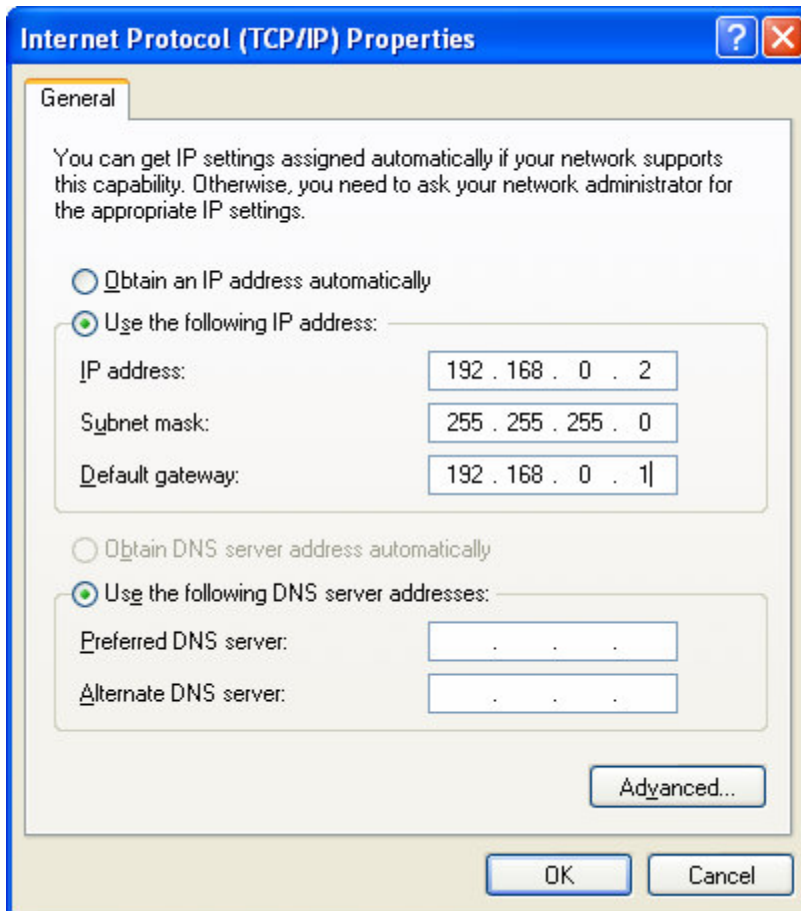
From the computer that you want to connect to your network, equipped with a **Windows XP** system, please open "*Control Panel*" and then "*Network Connections*".



Select your WiFi connection, right click and choose “*Properties*”.
From the first tab please select “*Internet Protocol (TCP/IP)*” and then the “*Properties*” button.



You have to enter manually the IP address for your WiFi connection, as follows: IP address – 192.168.0.2, subnet Mask – 255.255.255.0. We also recommend you to set 192.168.0.1 as *Default Gateway*. Validate the changes.



After all the manipulations on both your computers you need to restart them.

Now your Internet connection is properly shared and you will be able to use it from both your computers in the WiFi network.

Attention:

It might be necessary to establish the Internet connection manually each time on your Win 2000 system in order to have access to it from the Windows XP PC. The automatic connection might still be possible with certain types of modems. We recommend you to contact also your Internet service provider in order to check your modem.