

## Installation procedure for Scan@Home 5.0 driver for Windows XP.

1- Once the installation file has been downloaded to your computer, launch the installation process by double-click it. Files necessary to the installation of the scanner will first be copied to the following location:

C:\Scan@home 48 USB Drivers\Win2000

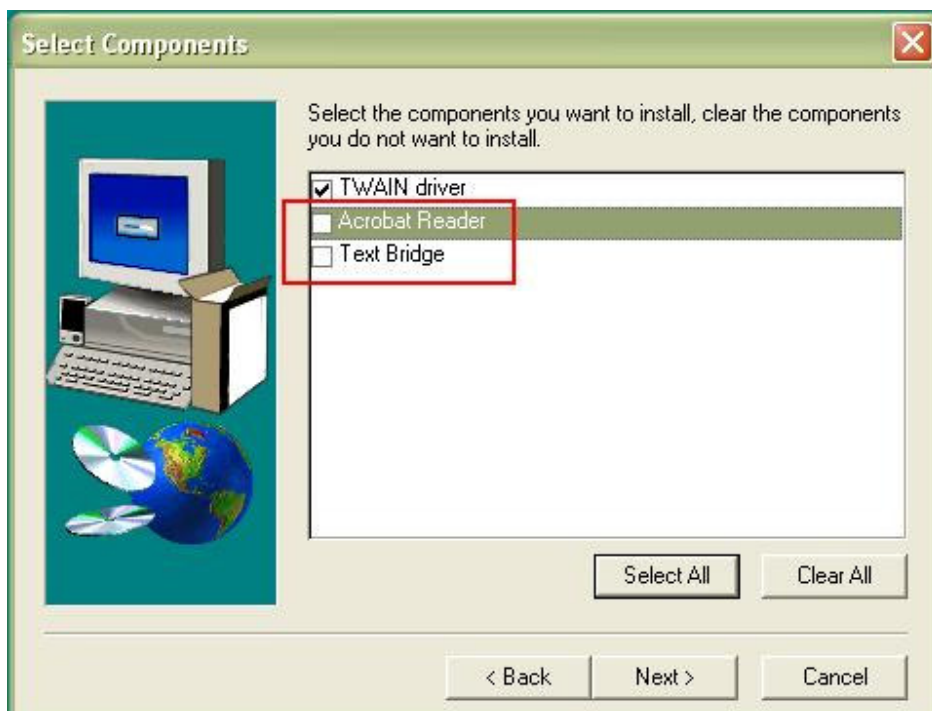
2 - You will then be asked to select the language of the installation (English by default)

A document will then open with the following error message:

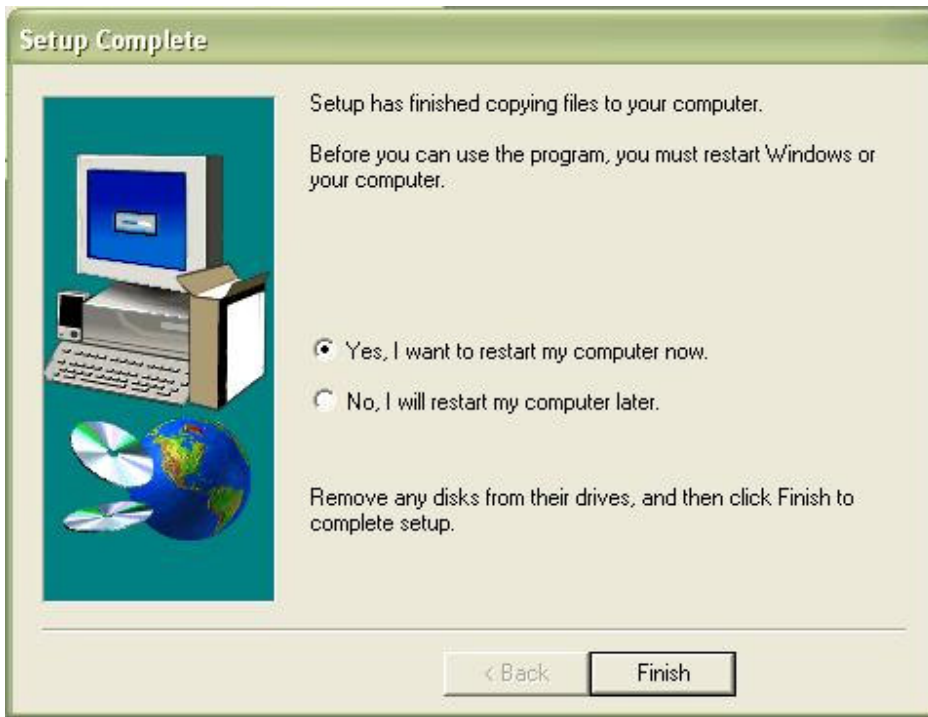


Simply click on OK to continue.

3 - Next, you will be asked to select the components to install. Since the file only includes the driver, be sure to uncheck the boxes for "Acrobat reader" and "Text Bridge":

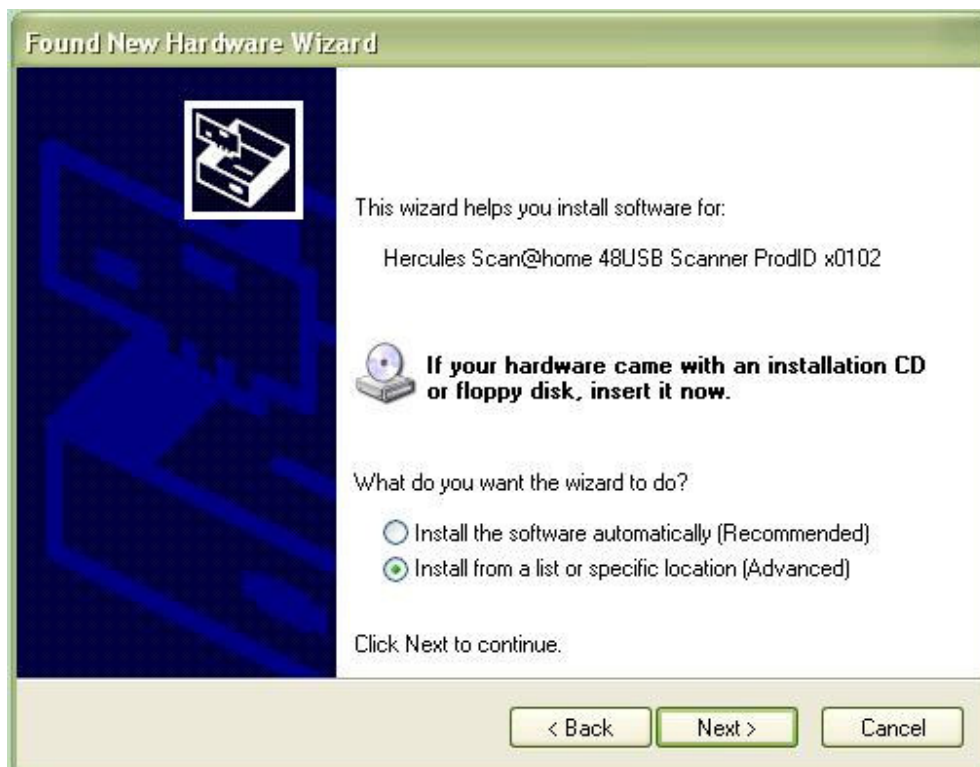


Then, click on NEXT to continue the installation process. You will then be asked to reboot the computer.



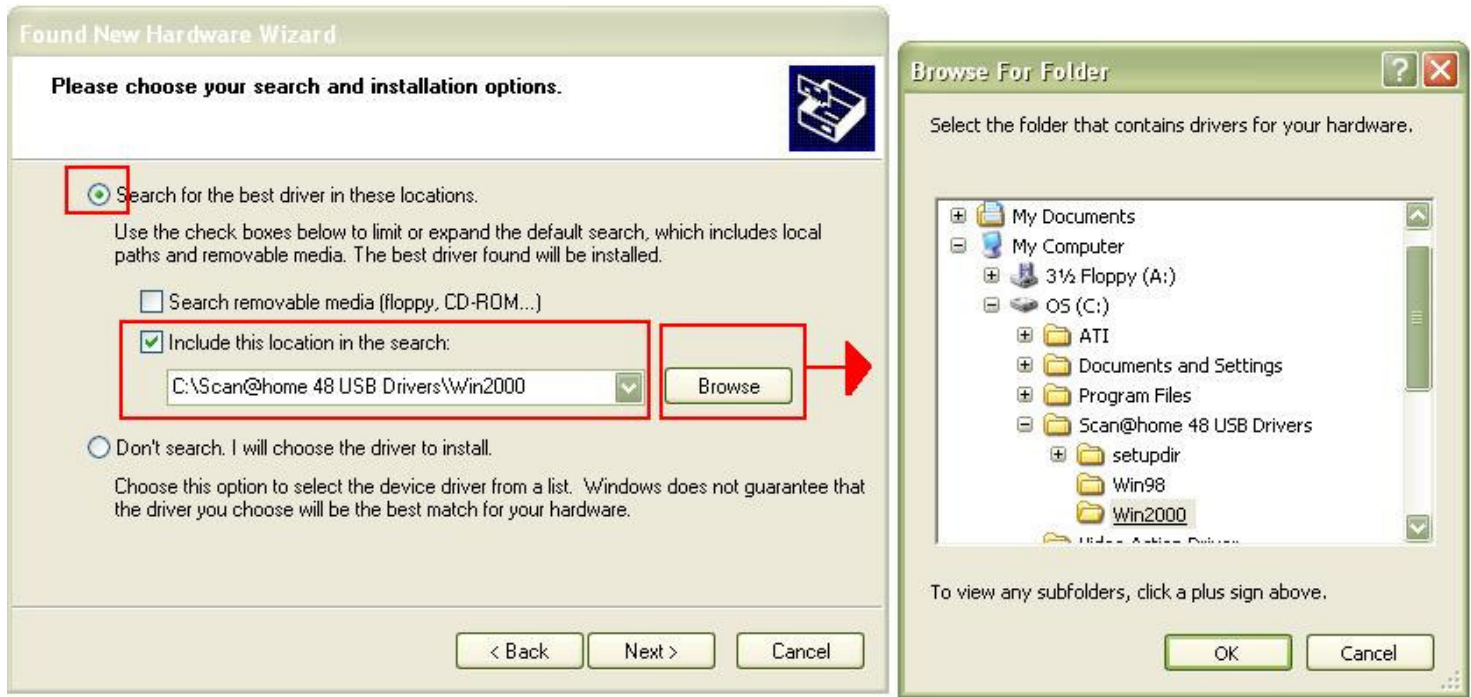
4- Once the computer has been rebooted, connect your scanner to the USB port. Windows Installation Wizard will indicate that a new hardware has been detected will and invite your to install the driver

First select "Install from a list or a specific location"



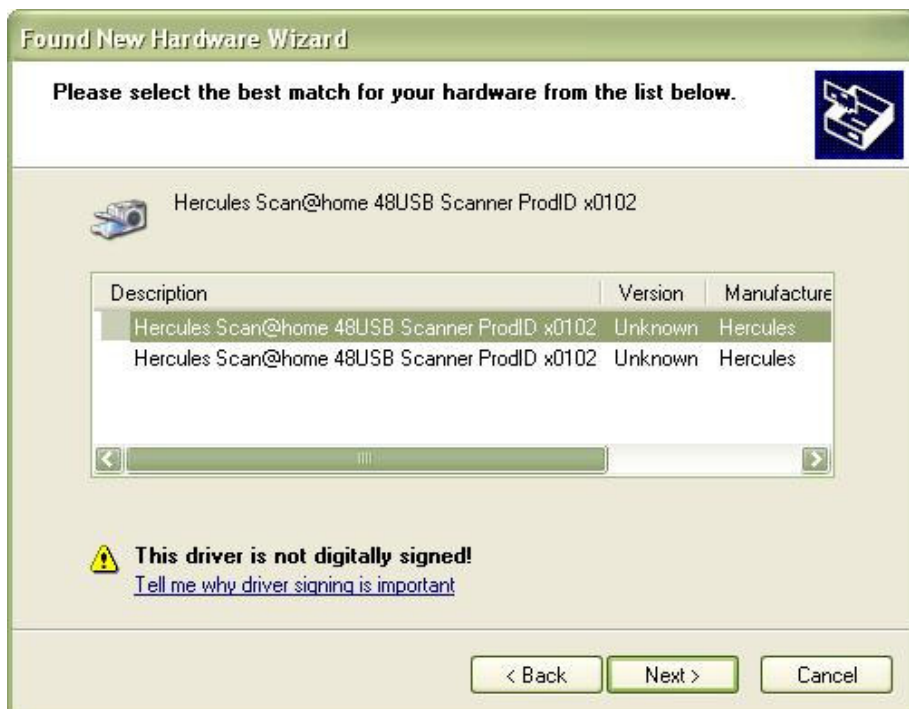
5- Then, select "Search for the best driver in these locations". Uncheck "Search removable Media", but leave "Include this location in the search". Then point Windows toward the following location:

C:\Scan@home 48 USB Drivers\Win2000

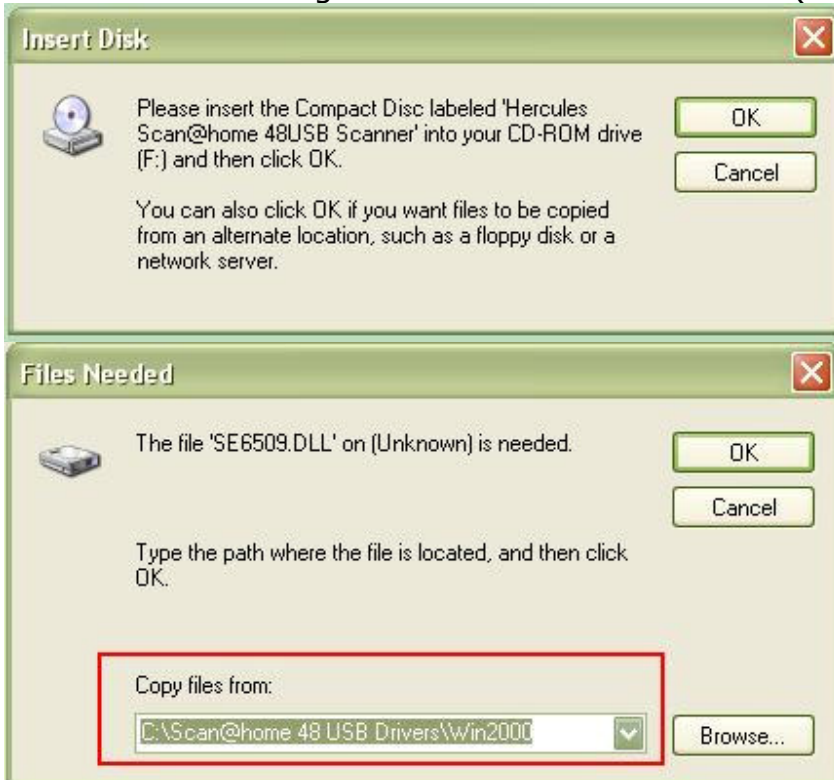


You can use the BROWSE button to search the folder on your computer.

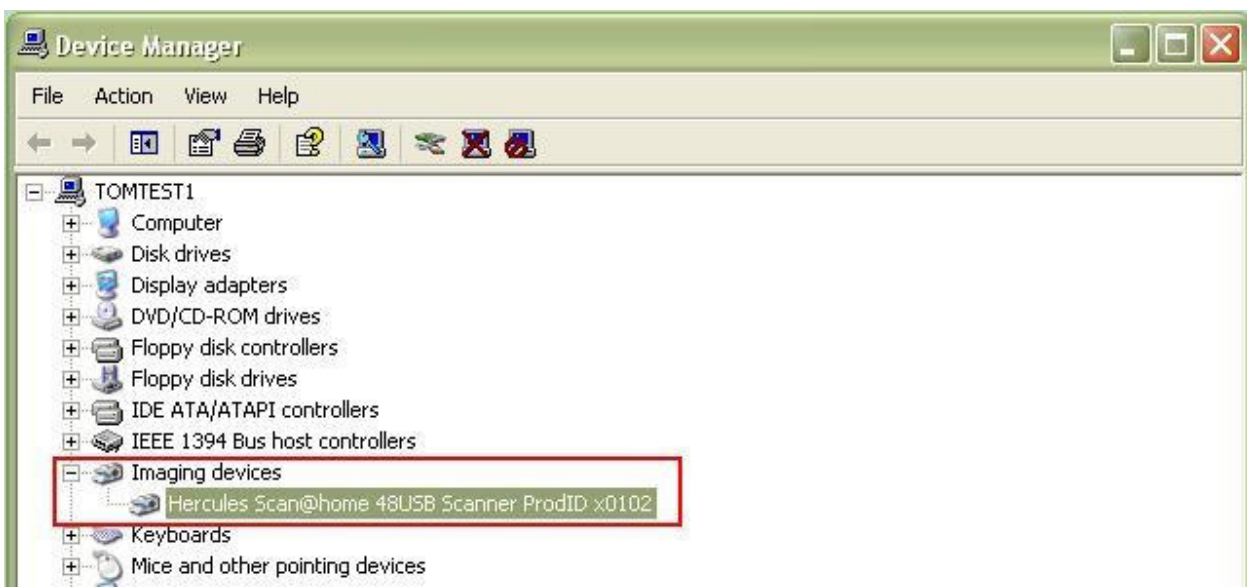
6- Once Windows has found the installation files, you may be asked to select a model (Hercules Scan@home 48USB Scanner ProdID x0102).



7 - During the installation process, it is possible that Windows may not find all the files and ask you for the installation CD. In these cases, simply point toward the folder created during the installation of the driver (see step # 5)



8 - Once the installation process is complete, your scanner should appear in Device Manager (Windows Control Panel > System > Hardware tab) under "Imaging Device":



You are now ready to use your scanner.