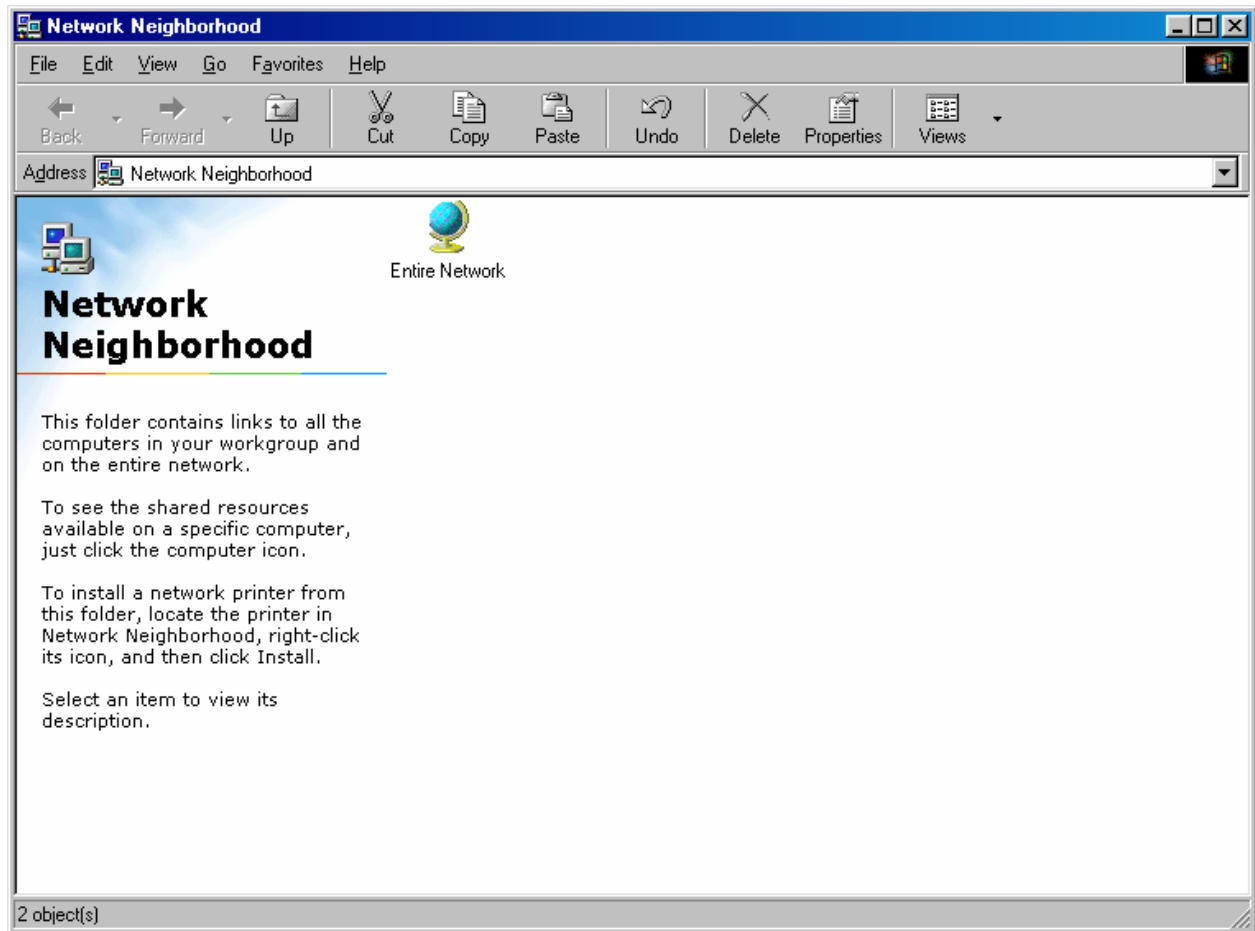
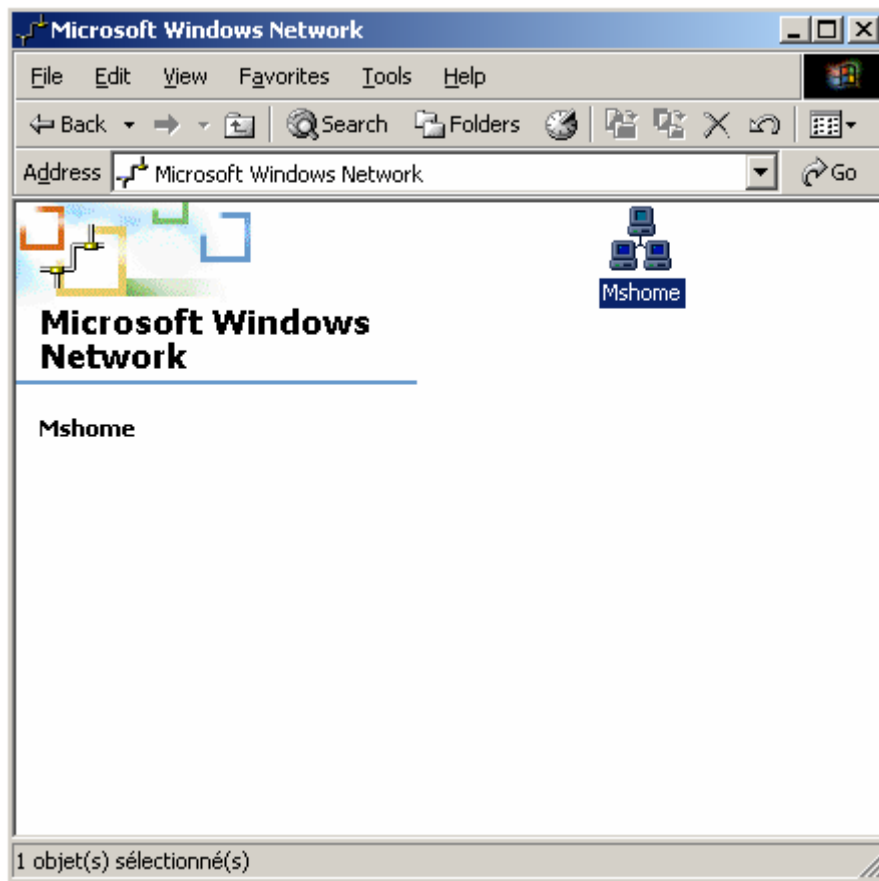


How can I access shared resources on a system running Windows 98SE?

To access shared folders on a system running Windows 98SE: Double-click the “*Network Neighborhood*” icon on your desktop, then double-click “*Entire Network*”.

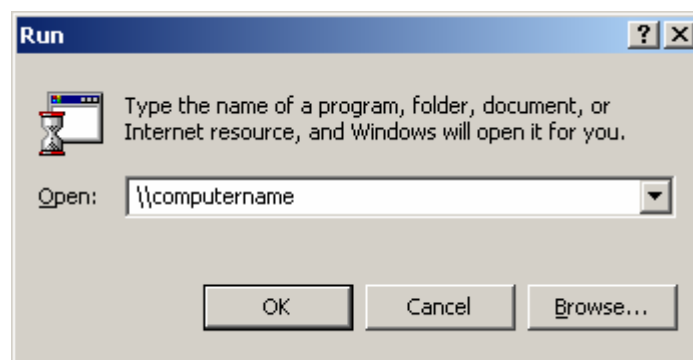


Here you will find all of the computers currently connected to your network. It is important that all computers connected to the network are configured in the same workgroup.



Finally, double-click the computer containing the shared resources you wish to access. You can now view and navigate within its directories via your network!

A more direct solution for accessing shared folders on a computer in your network is to click "Start/Run", enter "\\computername" and then click "OK".



To find out how to identify the workgroup and the computer name used, please refer to the FAQ "How can I find and change the name of my computer and the name of my workgroup?" corresponding to your operating system.