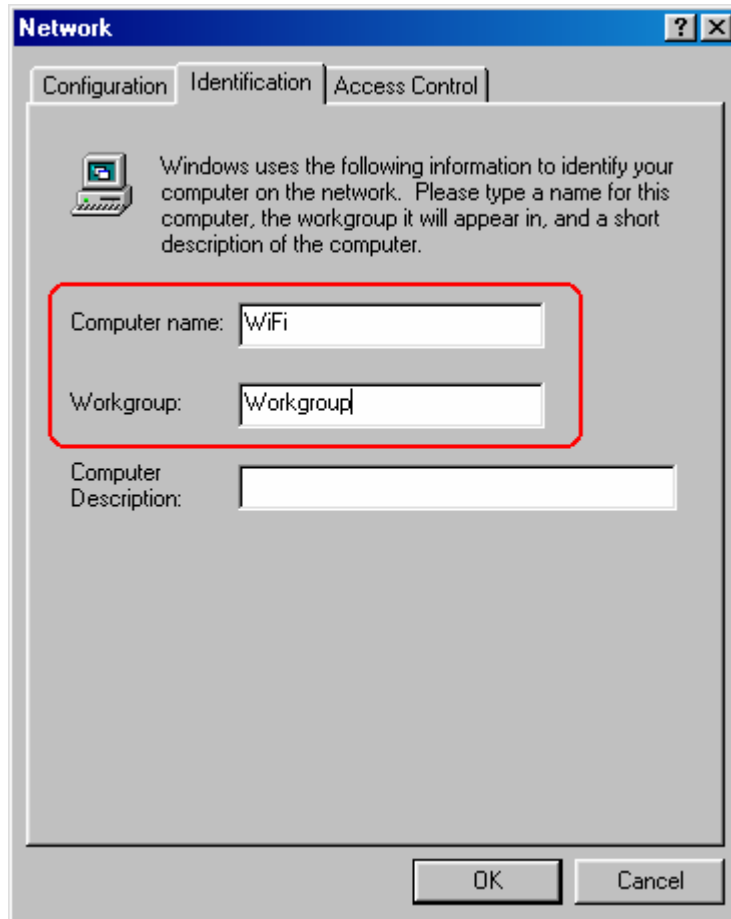


How can I find and change the name of my computer and the name of my workgroup on a system running Windows Millennium Edition?

To identify your system settings, proceed to your computer's "Control Panel". To do so, click "Start/Settings/Control Panel". Double-click the "Network" icon.

In the "Network" window, select the "Identification" tab. You can now change the computer name as well as the workgroup name used.



After validating your selections by clicking "OK", you must restart your computer for the changes to be taken into account.