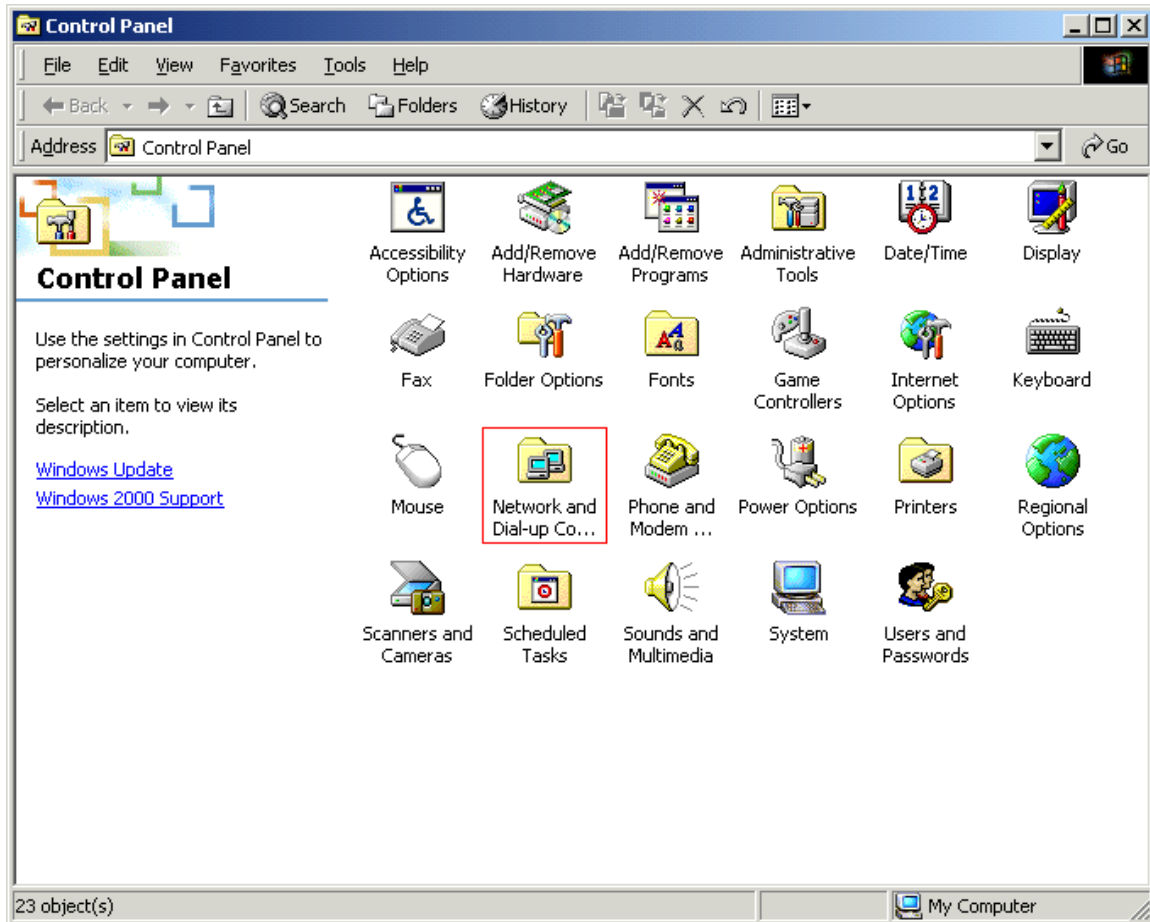
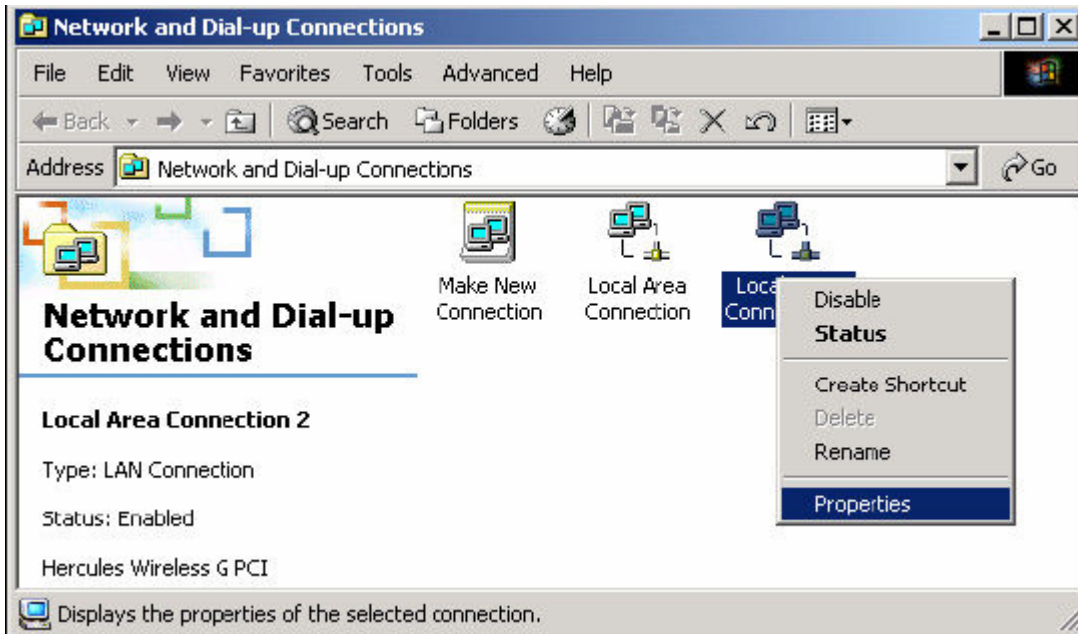


How can I manually assign an IP address to my computer on a system running Windows 2000?

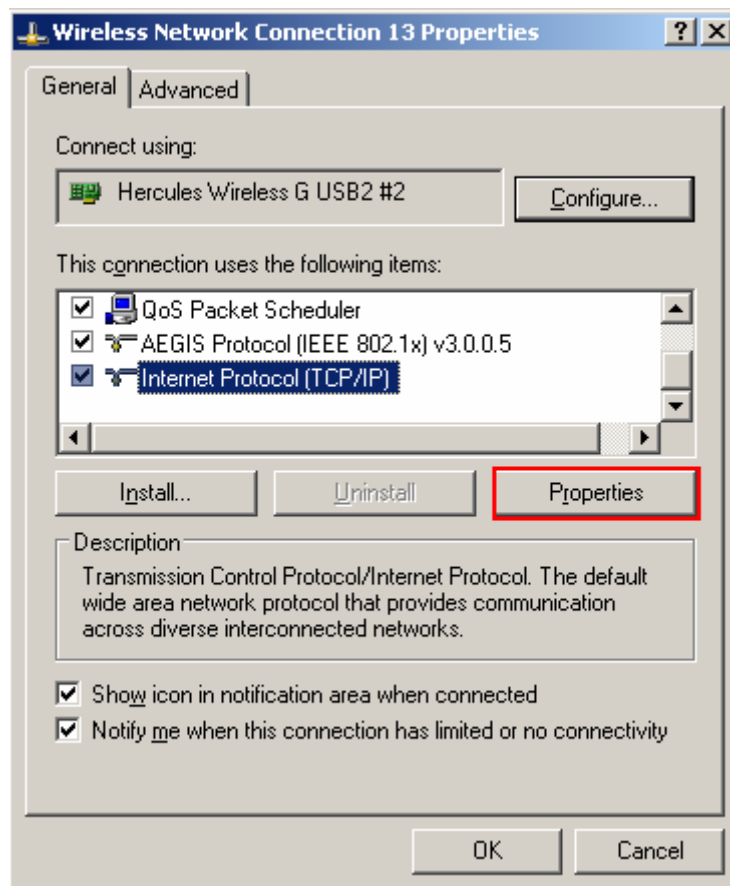
Click "Start/Settings" and then select "Control Panel". In the Control Panel, double-click the "Network and Dial-up Connections" icon.



Identify your connection in the Network and Dial-up Connections window. To do so, select your network by left-clicking the corresponding icon once: your device's name will appear on the left-hand side of the screen (for a Hercules device it should say "Hercules Wireless G..."). Right-click the icon corresponding to your connection and select "Properties".

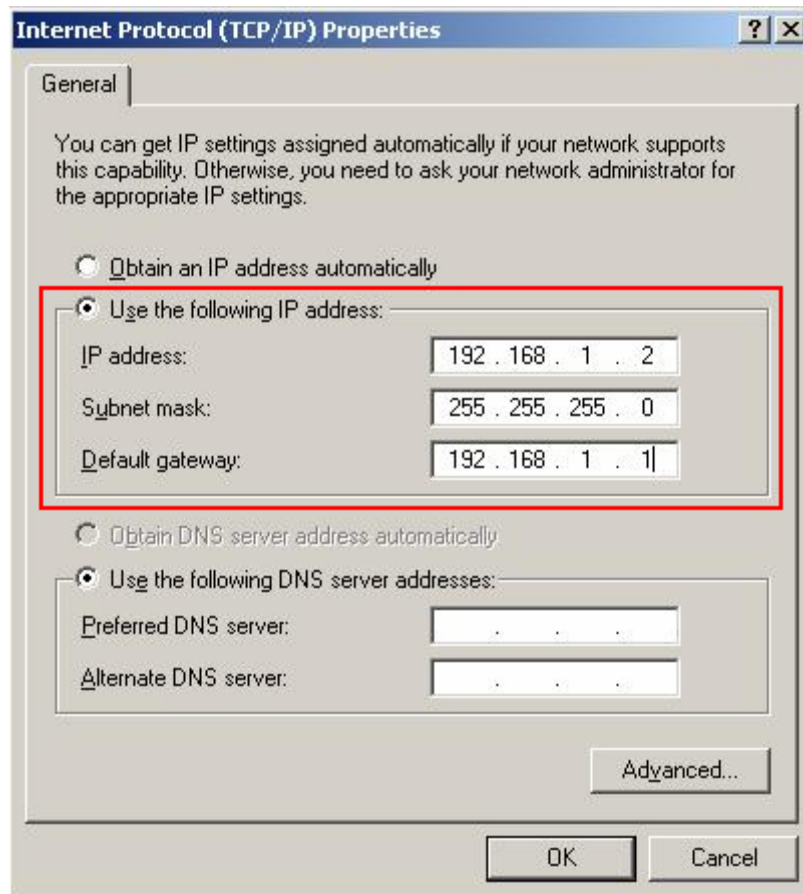


In the "Wireless Network Connection Properties" window that appears, select the "General" tab. Select "Internet Protocol (TCP/IP)", then click the "Properties" button.



In the new window that appears, select the *“Use the following IP address”* option and enter your choice of IP address. We recommend that you select *“192.168.1.x”* for your IP address (replace the *“x”* with a number between 2 and 254) and *“255.255.255.0”* for your Subnet mask.

For the Default gateway, enter *“192.168.1.1”* (the Hercules Modem router’s default address).



Validate the changes by clicking *“OK”*.