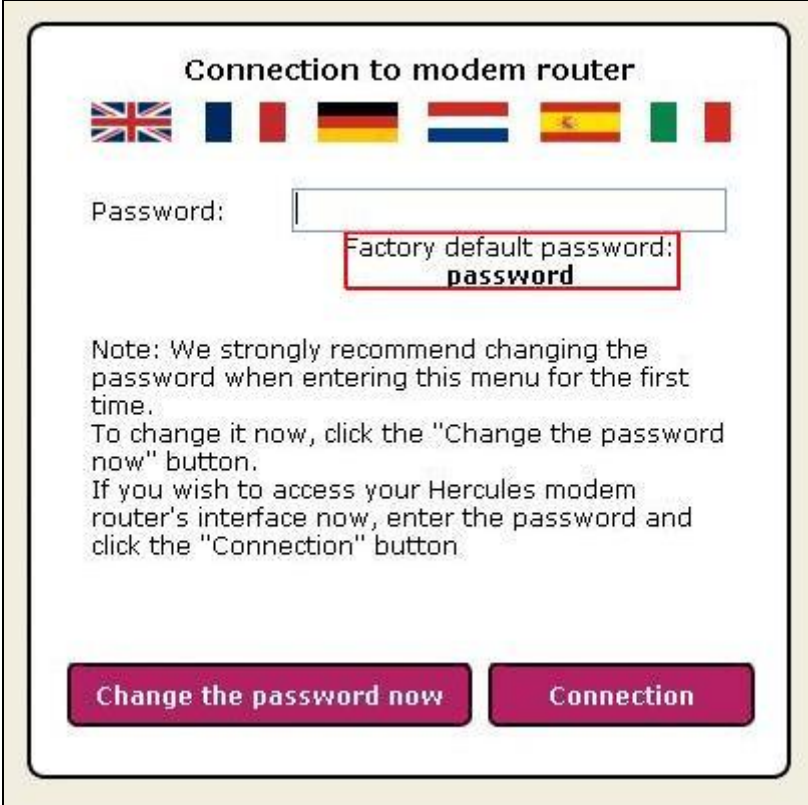


What is the default password to access my Hercules Modem router's settings and how can I change it?

The factory default password to access your Hercules Modem router's settings is the word **"password"**, as indicated in the WiFi Manager software.



Connection to modem router

United Kingdom, France, Germany, Netherlands, Spain, Italy

Password:

Factory default password:
password

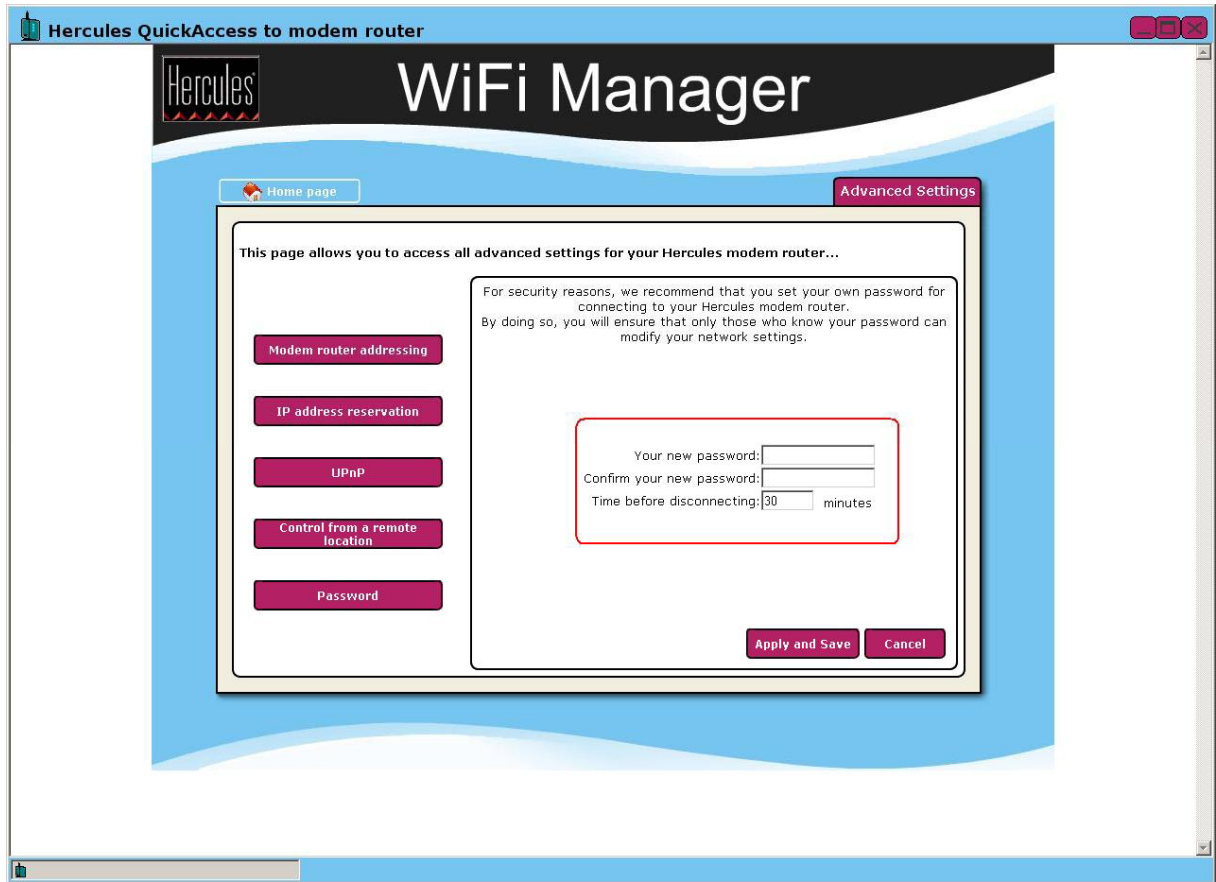
Note: We strongly recommend changing the password when entering this menu for the first time.
To change it now, click the "Change the password now" button.
If you wish to access your Hercules modem router's interface now, enter the password and click the "Connection" button.

Change the password now **Connection**

We recommend that you change this default password and replace it with a personalized password, in order to better protect access to your Modem router's settings.

To do so, either click the *"Change the password now"* button directly in the window above, or once you have entered WiFi Manager, click the *"Advanced Settings"* button and then click *"Password"*.

You should then enter and confirm your new password, then validate your choice by clicking *"Apply and Save"*.



Please note that you must respect upper or lower case characters in your password to connect to WiFi Manager.