

## How can I verify that the Karaoke Console is correctly installed on my PC ?

Once connected and installed, the DJ Console should normally be enumerated under **Device Manager**:

- Right click on **MY COMPUTER** icon on your desktop and select **Properties**
- Select the **Hardware** tab, then click on the **Device Manager** button


The following elements should normally be present:

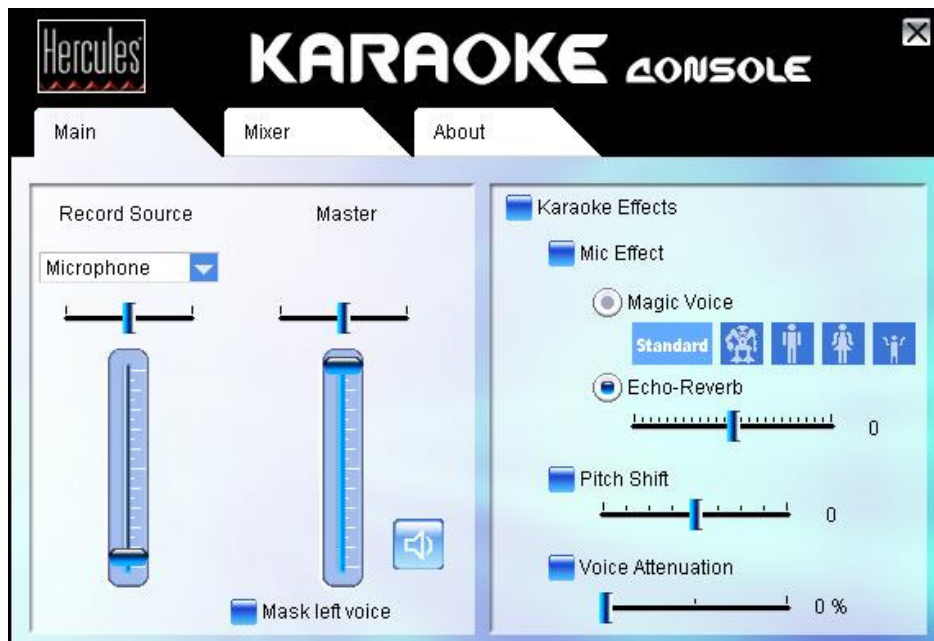


The **Karaoke Console** will also be present under **Sound and audio Properties** in Windows **Control Panel**.



When connected, the Karaoke Console should be seen as the default **Sound Playback** and **Sound Recording**. If not, you can use the drop menu to select it.

You will notice the  icon taskbar (near the clock), providing easy access to the **Karaoke Console Control Panel**:



It can also be accessed from the **Programs** menu (by default **Hercules > Audio > Hercules DJ Console MKII**).