

# Configuring Traktor 3 for the DJ Control Steel (OS X version)

## **1- Configuration of the MIDI channel**

From the DJ Console control panel, make sure that **MIDI channel for controls** is set to **1**.

This is very important as the TKS file provided is configured for the DJ Control Steel to work on this channel.

If you have multiple MIDI controllers, or would like to use the DJ Console on a different MIDI channel, you will need to modify the TKS file accordingly. Consult Traktor's user manual for more details.



## **2- Audio configuration in Traktor**

As the DJ Control Steel is only a MIDI controller, you will need to configure Traktor's audio setup in order to use your sound card for playback and monitoring on separate stereo channels (Consult the user manual for more details).

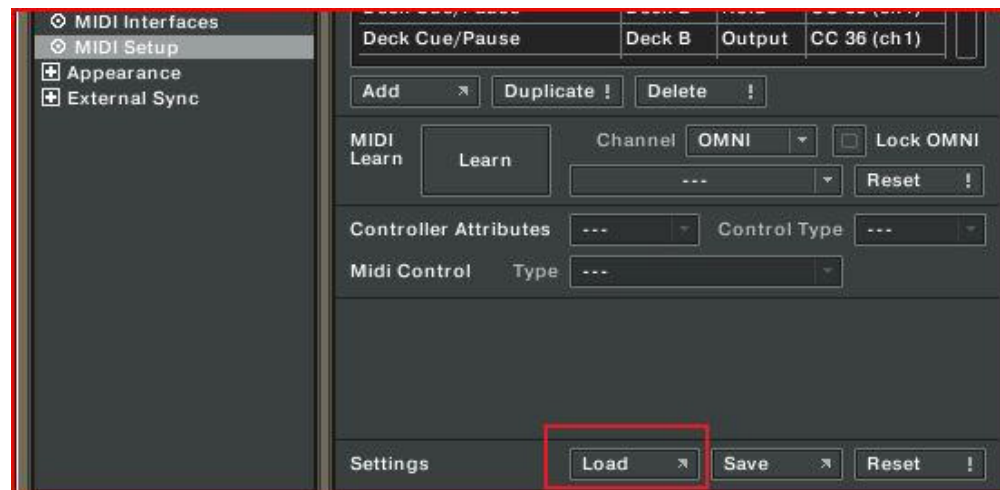


### 3- Configuration of the Midi controllers in Traktor

- a. Expand **Hotkey and MIDI setup** and select **MIDI Interface**. Make sure **Hercules DJ Control Steel Port 1** is marked with an **X** in the ACTIVE column for both MIDI IN and OUT.



- b. From **MIDI Setup**, click the **Load** button. Locate and select the TKS file, then press OK



- c. Traktor is now configured to use the DJ Control Steel.



## **MIDI Layout for the DJ Control Steel and Traktor3**

**NOTE:** The terms used are those employed in Traktor

### Main Configuration:

- A-** Deck Gain
- B-** EQ (Bass/ Mid/ Treble) and EQ Kill
- C-** Master Balance
- D-** Deck Pitch Bend - Down
- E-** Deck Pitch Bend - Up
- F-** Deck Tempo
- G-** Deck Skip Backward / Forward
- H-** Deck Monitor Cue
- I-** Deck Load Selected
- J-** Browser List Select Up/Down
- K-** Deck Tempo - Sync
- L-** Deck Scratch / CD-DJ Jogg
- M-** Deck Volume
- N-** Master Volume
- O-** Deck Cue/Pause
- P-** Deck Scratch Jog ON  
(HOLD to activate scratch on deck's jog wheel)
- Q-** Deck Play/Pause
- R-** X-Fader



Loop:



**Buttons 1 / 4:** Loop Set/In, Loop Active/Out

**Buttons 2 / 5:** Loop Length Increase/Decrease

**Buttons 3 / 6:** Loop Move Backward / Forward



Effects:



**Buttons 7 / 10:** Effect Select Previous/ Next

**Buttons 8 / 11:** Effect button 1 /2

**Buttons 9 / 12:** Effect button 3 /4

**Controls 1/2:** Effect Knob 1 / 2

(Press **Apply Ctrl. On** to select between Deck A or Deck B)



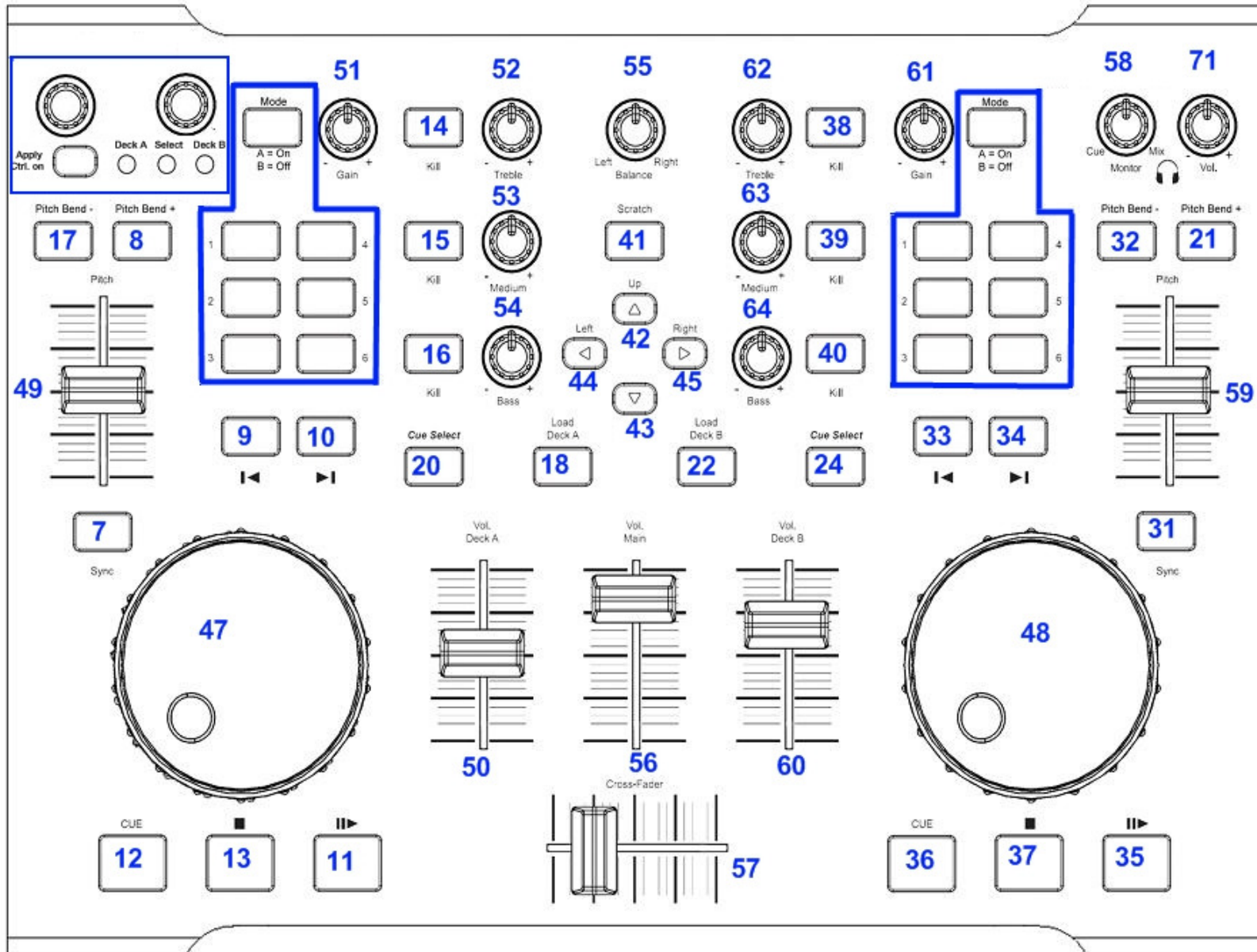
## Secondary functions:

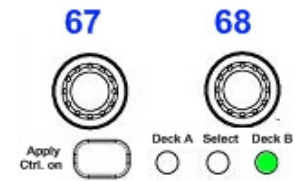
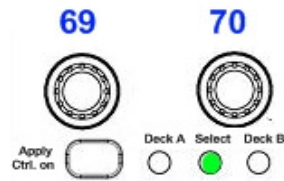
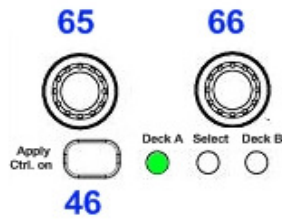
Press and hold the SCRATCH button to access the secondary functions

- A-** Jump Cue- List 1, 2, 3 (top to bottom)
- B-** Deck Tempo - Reset
- C-** Deck Time Stretch ON
- D-** Browser Tree Up/ Down / Expand/Collapse
- E-** Deck Jump Backward/Forward
- F-** Deck Cue Set
- G-** Lock Cue Point
- H-** Deck CD-DJ Jogg

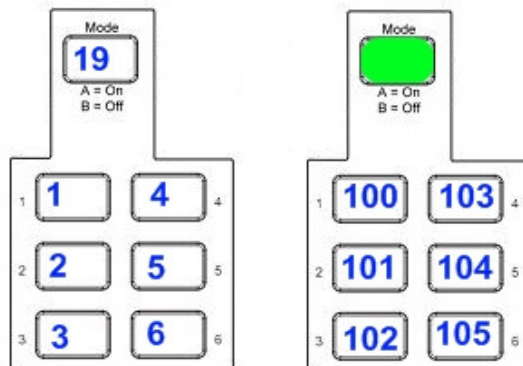


## Midi controllers map





## Deck A



## Deck B

