

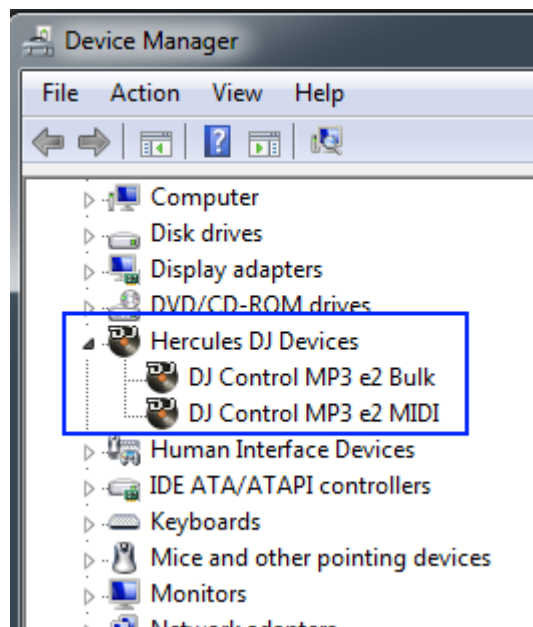
## How can I verify that my DJ Control MP3 e2 is correctly installed on my PC?

First, we recommend that you use the latest driver version available from our web site to proceed to the installation.

Once connected and installed, the DJ Console should normally be enumerated under **Device Manager**:

- Right click on **COMPUTER** icon on your desktop and select **Manage**
- From the left column, click on **Device Manager**

The different elements of the **DJ Control** you should normally appear in the following categories:



The **DJ Console Control Panel** should also appear in the notification area (near the clock). It can also be accessed from Windows **Control Panel**.



The **ABOUT** tab provides information about the drivers currently installed. If you ever need to contact our technical support, be sure to have this information at hand.

