

System restore

My eCAFÉ doesn't work anymore.
I can't remember my password.
I want to restore my eCAFÉ to its initial state (factory settings).

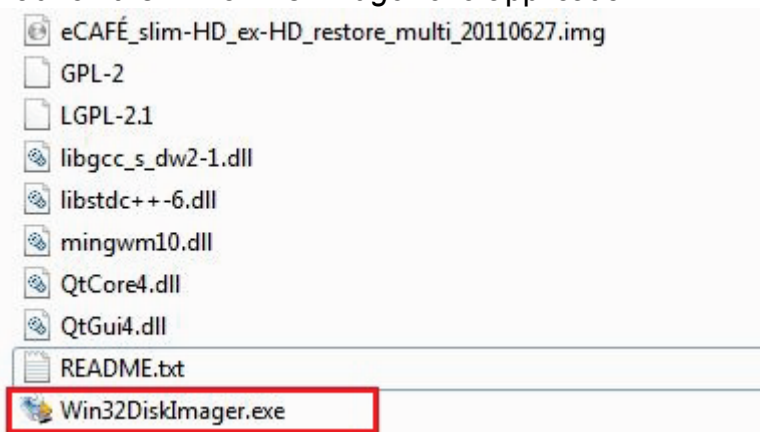
Solution

1. Create a boot card using another computer running **Windows XP, Vista or 7 ONLY**:

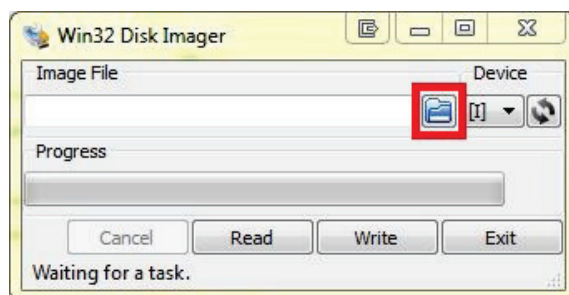
- Download the file containing the boot card creation tool and the system restore image.
- Unzip the file.
- Connect the SD card to your computer (using a card reader).

YOU MUST USE A 2 GB (OR MORE) SD CARD

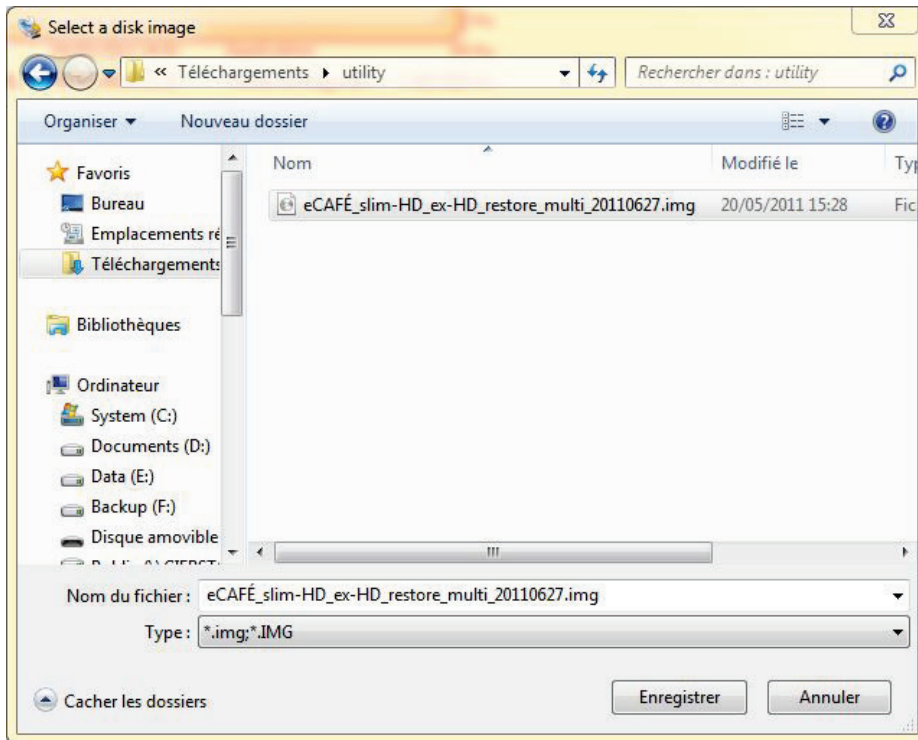
- Access the directory that was created when you unzipped the utility, then select and launch the *Win32DiskImager.exe* application.



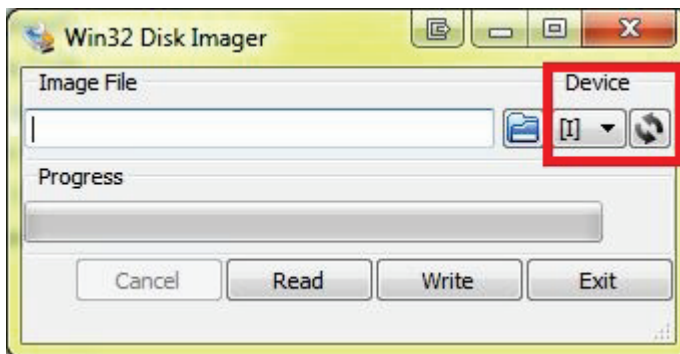
- Click the blue folder icon.



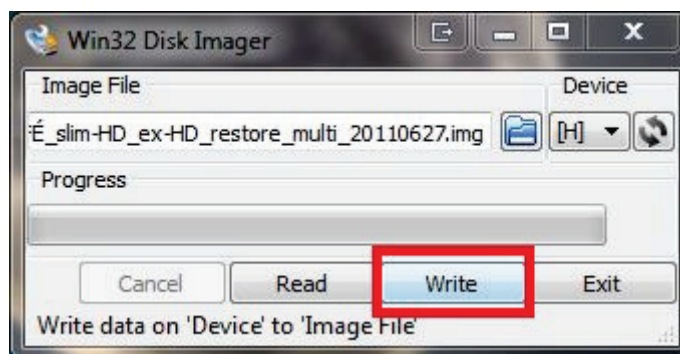
- Select the file that appears in the window, then click “Save”.



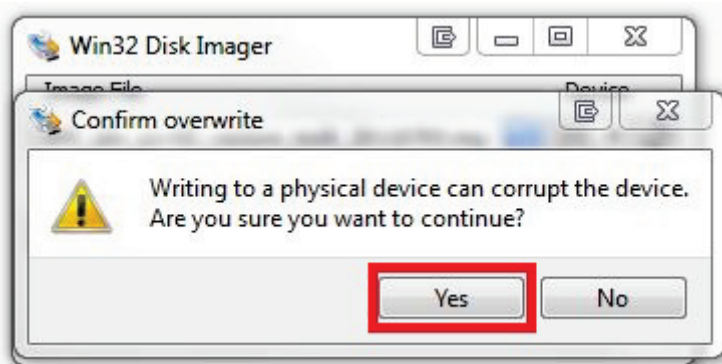
- Select the destination volume (the letter must correspond to the SD card that you are using to restore your eCAFÉ).



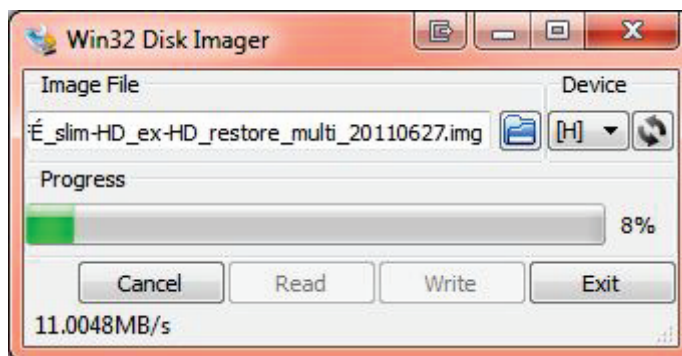
- After selecting the destination, click "Write".



- Confirm the write process by clicking "Write" again.

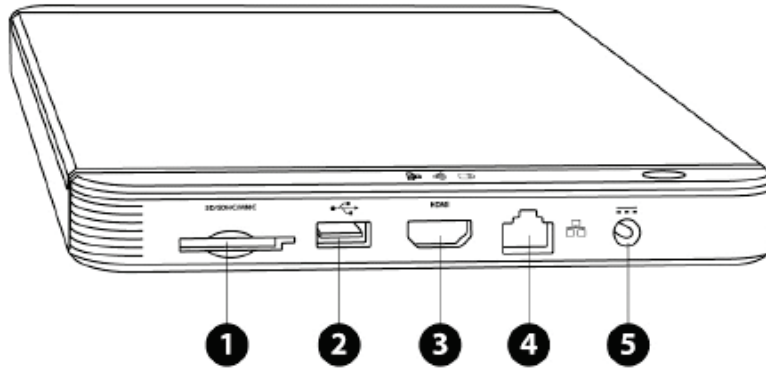


- Wait for the card writing process to end.



2. Start up your eCAFÉ by booting from the card:

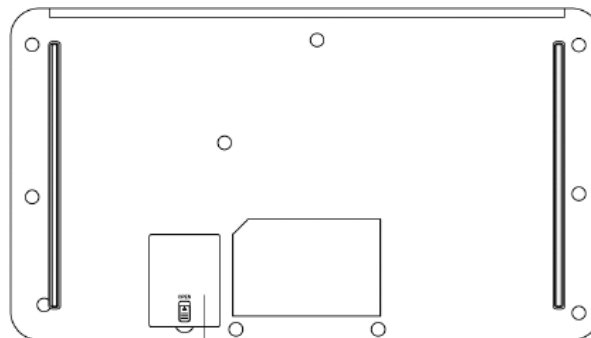
- Make sure that your eCAFÉ is powered off (and not running in standby mode).
- Plug your eCAFÉ's power supply into an electrical outlet.
- Insert the SD card in the external card reader (#1).



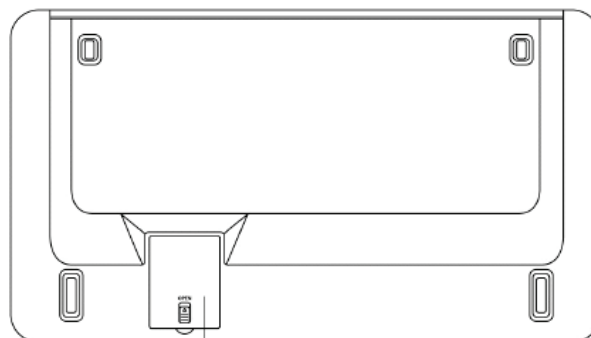
Right view

- | | |
|----------------------------------|---------------------------|
| 1. Memory card reader | 4. Ethernet Port |
| 2. USB port | 5. Power supply connector |
| 3. HDMI connector (eCAFÉ™ EX HD) | |

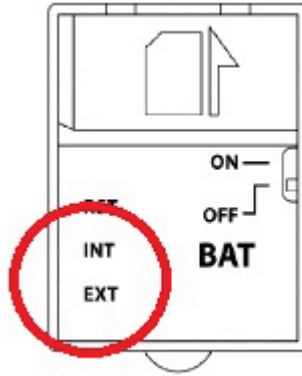
- Open the expansion slot cover plate (#1) and set the boot switch to the “EXT” position.



1
Hercules eCAFÉ™ Slim HD



1
Hercules eCAFÉ™ EX HD
Bottom view



- Start up your eCAFÉ and wait for the login prompt.
- Enter “root” at the login prompt, then press the [ENTER] key.

```
freescall login: root
```

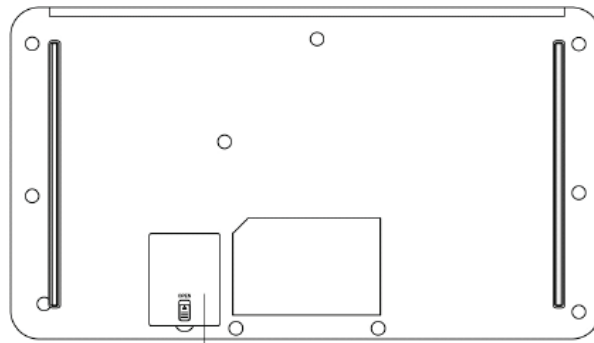
- Enter “restore” at the command prompt, then press the [ENTER] key.

```
root@freescall ~$ restore
```

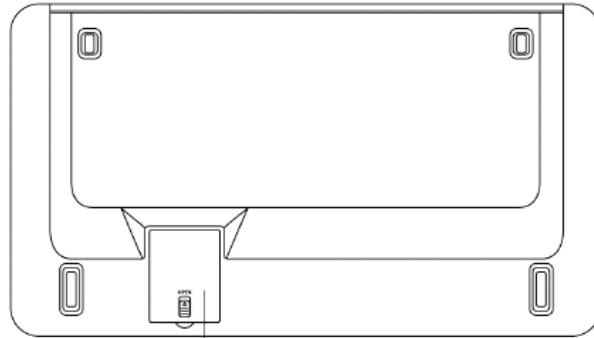
- Follow the instructions displayed on the eCAFÉ’s screen.

3. Restart your eCAFÉ:

- Turn your eCAFÉ off by pressing the ON/OFF button (hold it pressed until turn off).
- Remove the SD card from the external card reader (#1).
- Set the boot switch back to the “INT” position.
- Close the cover plate again and restart your eCAFÉ.



1
Hercules eCAFÉ™ Slim HD



1
Hercules eCAFÉ™ EX HD

Bottom view

