

Password to unlock the login keyring

The system requests a password to open the login keyring.



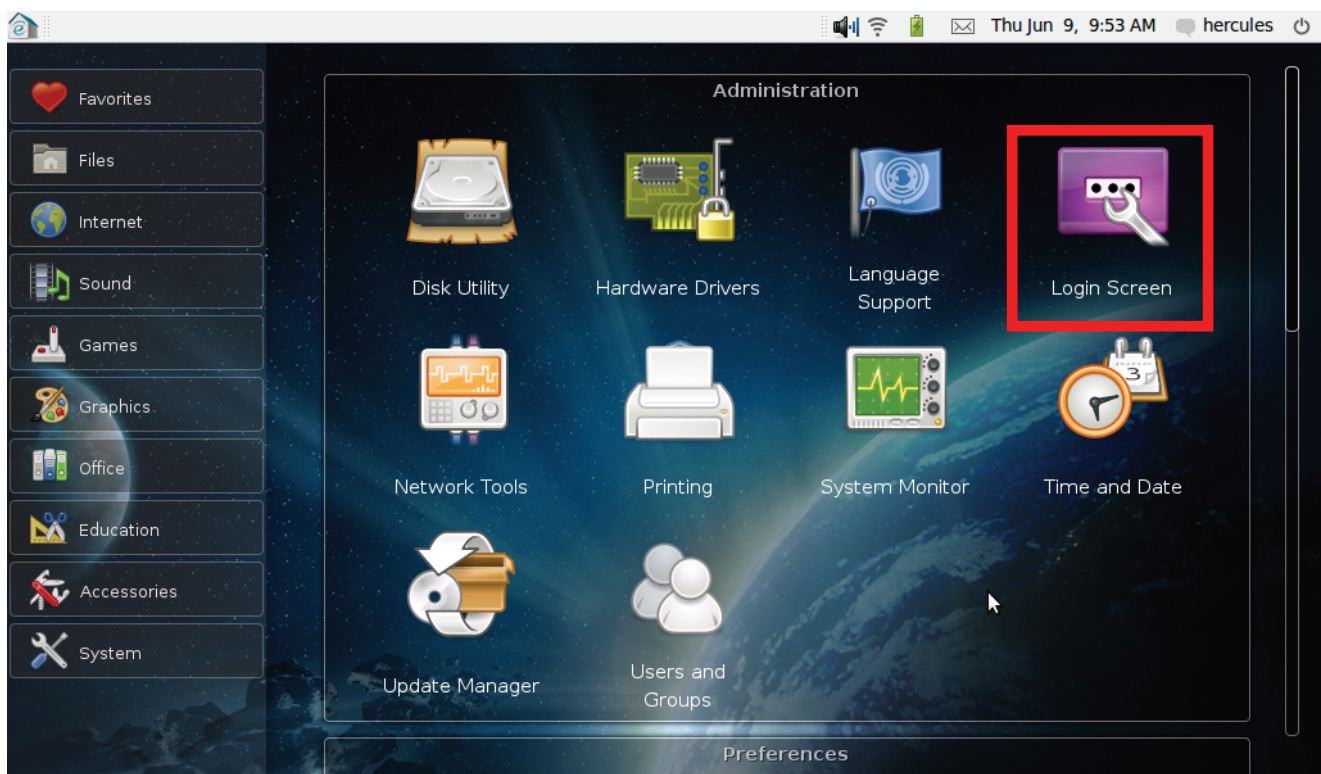
Solution

This message is displayed because you have configured the login mode to “automatic” (no password is required to access your eCAFÉ).

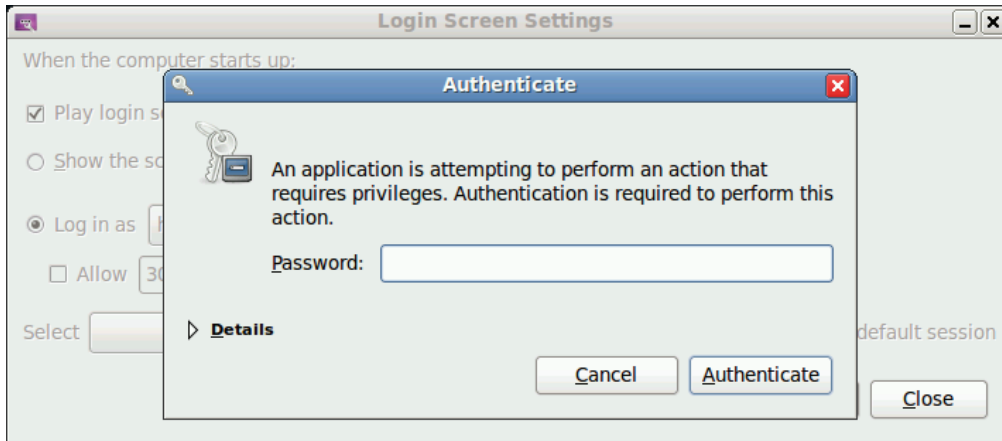
The password required to unlock the keyring is the session password (i.e. the password that you created when starting up your eCAFÉ for the first time).

To switch back to the “standard” login mode (i.e. a password is requested when you start up your eCAFÉ), please proceed as follows:

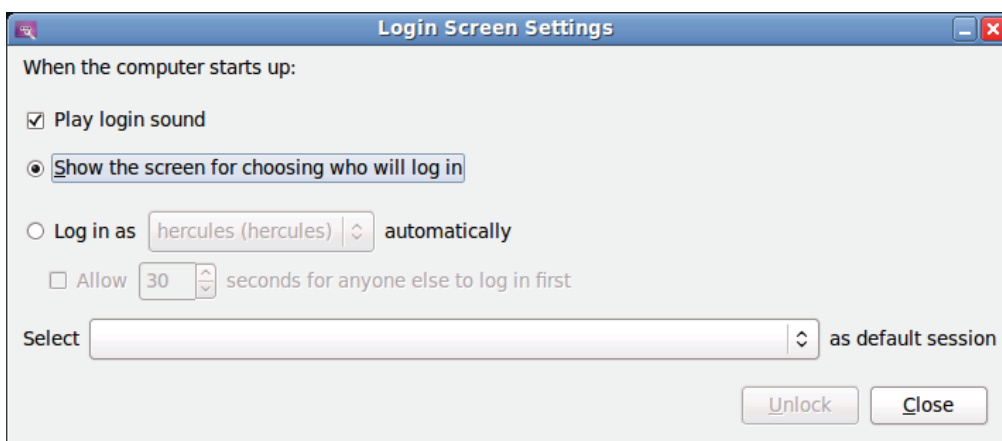
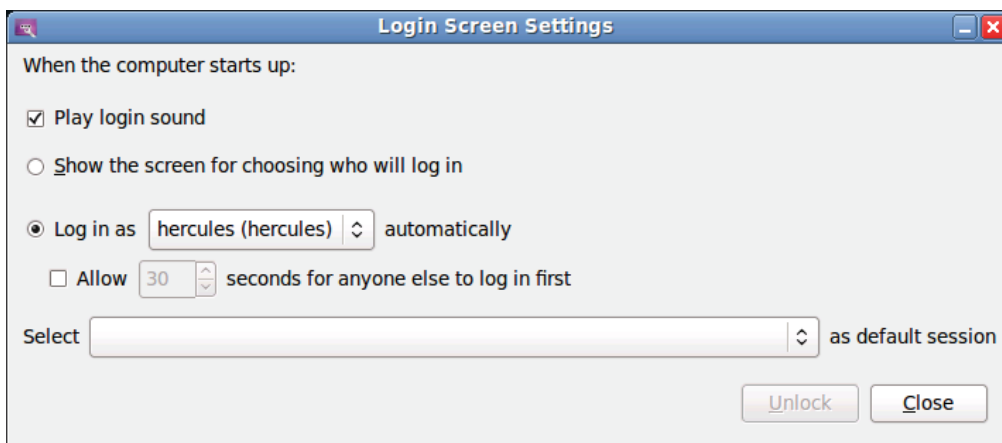
1. Access the “System” section and launch the “Login Screen” application.



2. Click “Unlock”, then enter your password.



3. Switch the selected setting from “Log in as ... automatically” to “Show the screen for choosing who will log in”.



4. Then, click “Close” to confirm the change.

The next time you start up your eCAFÉ, you will be required to enter your password to access your session.