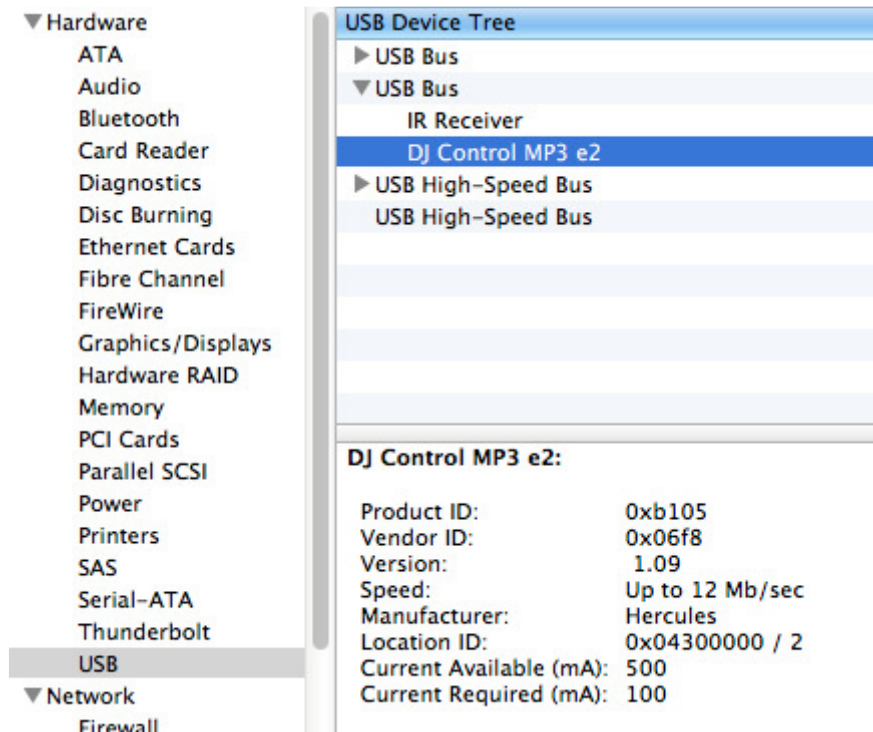


How can I verify that the DJControl MP3 LE is correctly installed on my MAC computer?

Once installed, the DJControl MP3 LE should normally be enumerated in System Profiler (**Application > Utilities**):



The DJ Control will also be present in **Audio/MIDI SETUP** (**Application > Utilities**):

Under **MIDI Devices**, you should notice the icon **DJControl MP3 LE**





The **DJ Console Control Panel**, should also appear on the desktop

The **ABOUT** tab provides information about the drivers currently installed. If you ever need to contact our technical support, be sure to have this information at hand.

