

Hercules Muse Pocket configuration for DJUCED (Windows).

This document will explain how to configure your Hercules Muse Pocket USB soundcard so that it can perform properly with DJUCED 18° and 40°.

The following subjects will be covered:

- [Installation](#)
- [Windows 8 / 7 / Vista configuration](#)
- [Speakers and headphone connections](#)
- [DJUCED 18° & 40° configuration](#)

Before we start, we need to identify your model:



Muse Pocket LT



Muse XL Pocket LT3

INSTALLATION

The **Hercules Muse Pocket LT** doesn't require the installation of any specific drivers. Simply connect it to a USB port of your computer, and Windows will automatically recognize and install generic drivers that will allow you to use the Muse Pocket LT with any multimedia applications.

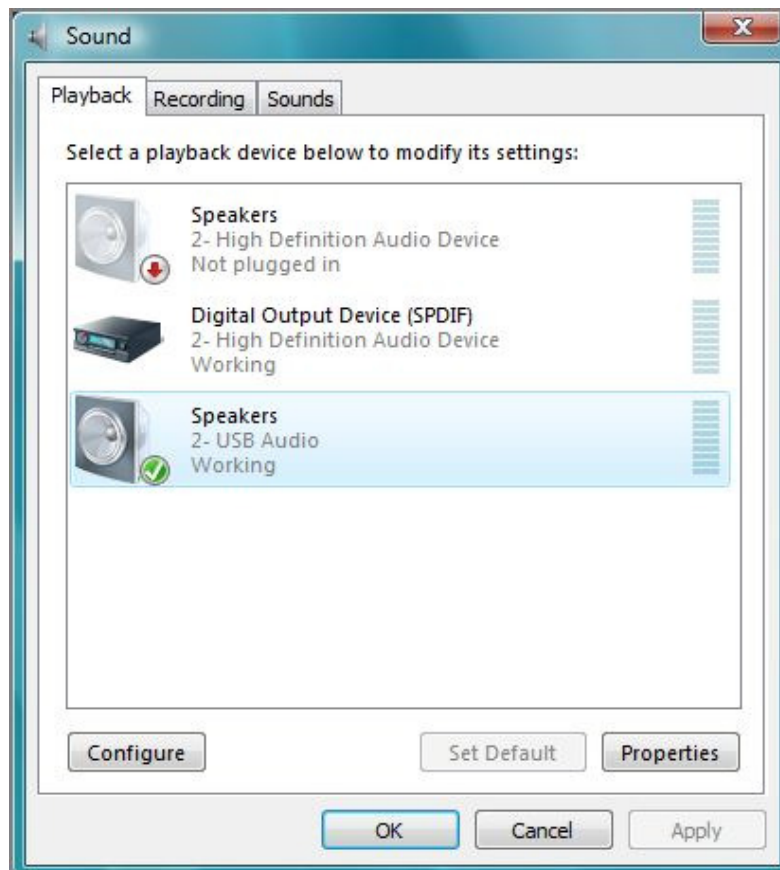
The **Hercules Muse XL Pocket LT3** may require the installation of drivers specific to your operating system version. Since drivers are constantly evolving, the drivers on your installation CD-ROM may not be the very latest version. Please visit the Hercules support website (<http://ts.hercules.com>) to verify whether new drivers are available.



Windows 8 / 7 / Vista configuration

Once your soundcard is correctly installed, it needs to be configured so that all outputs will be accessible in DJUCED. You can do this from Windows audio properties:

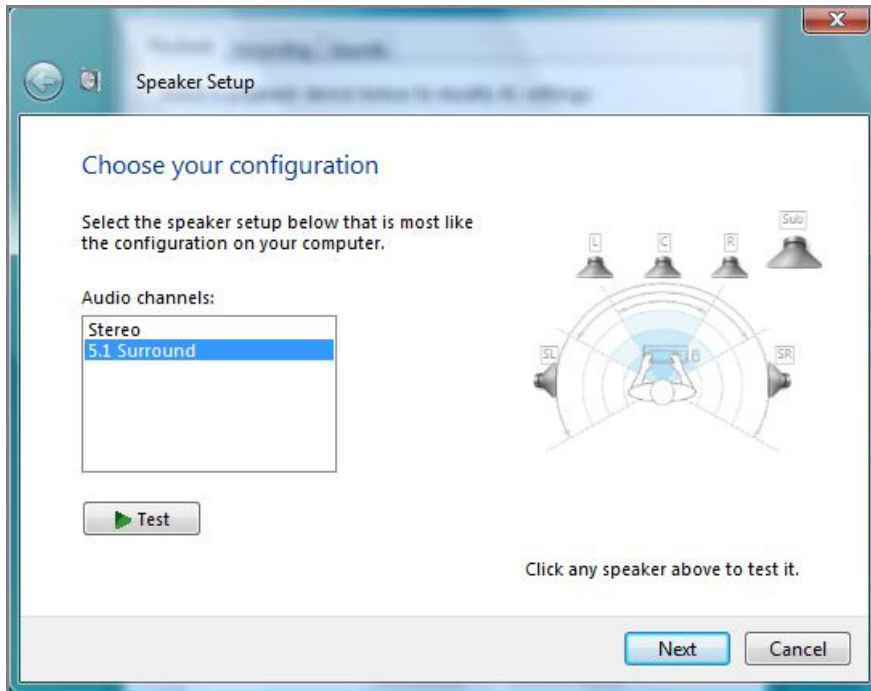
- Open the **Windows Control Panel** and click on **Sound**.
- Select **Playback Devices**



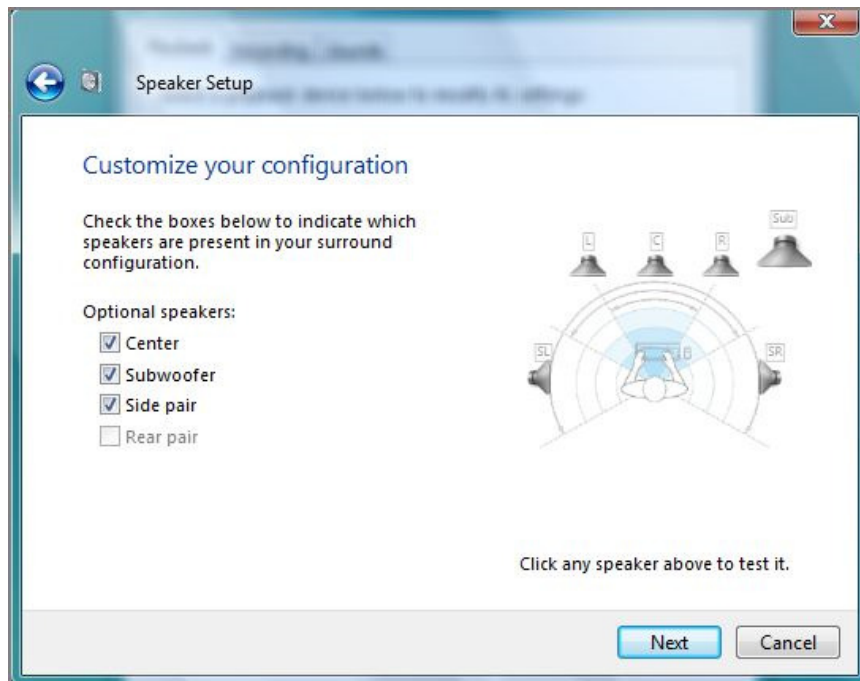
Many devices may be available. The **Muse Pocket LT** will appear as **USB Audio**, while the **Muse Pocket LT3** will appear by name.

Highlight the Muse Pocket, then, click **Configure**. This will launch the **Speaker Setup** wizard.





Select **5.1 Surround** Audio channels and click on **Next**.



Proceed through the following steps, checking all available boxes each time, until the configuration is complete.



Speakers and headphone connections

Next, proceed to connecting your speakers and headphone to the Muse Pocket.



Muse Pocket LT:

- Connect your speakers to the **Center/Sub** audio output.
- Connect your headphone to the **FRONT** audio Output.

Muse XL Pocket LT3:

- Connect your speakers to the **Center/Sub** audio output.
- Connect your headphone to the **FRONT** audio Output.



Important: DO NOT connect your headphone to the dedicated headphone output, as this will prevent all other outputs from working.

A note regarding 5.1 speakers systems:

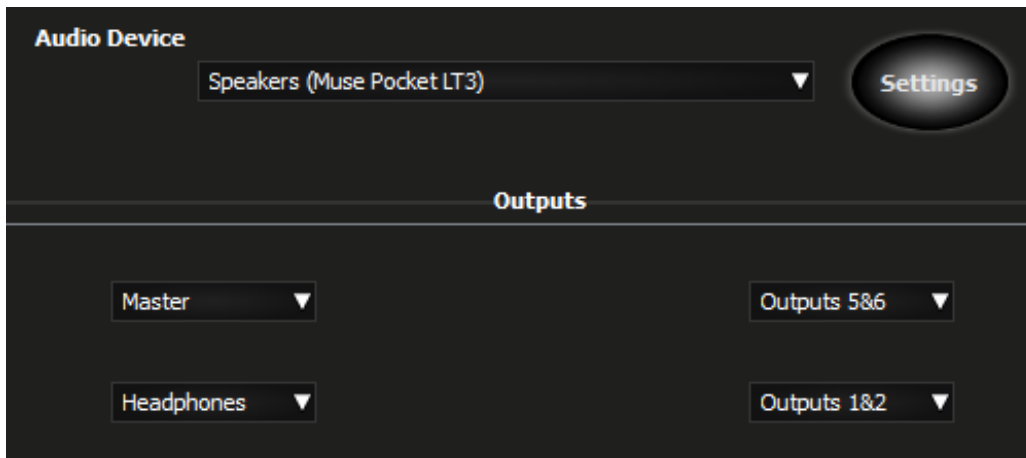
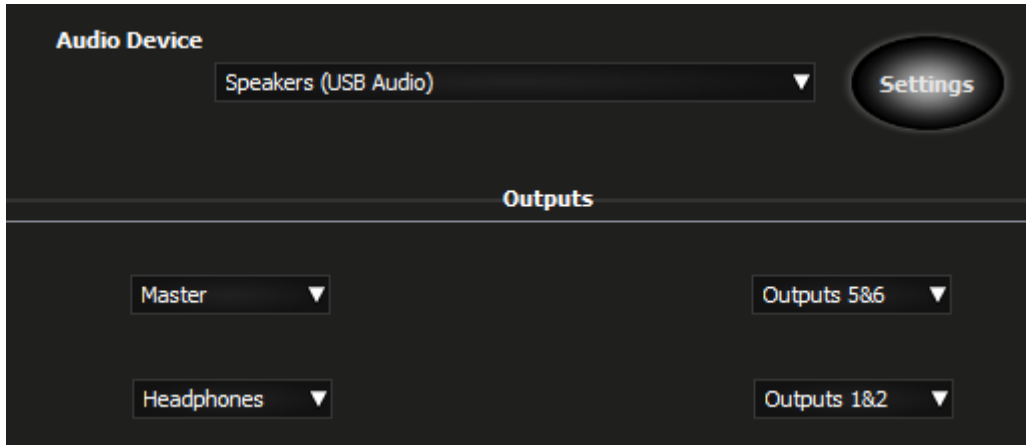
- Only connect the FRONT (often coloured green) connector to the soundcard.
- Your system will probably need to be configured in **SURROUND** mode so that the sound can be heard on all speakers (Consult the speaker's user manual for more details).



[DJUCED 18° / 40° configuration](#)

The last remaining step is to configure DJUCED to use your soundcard.

For **DJUCED 18°**, in the **Settings > Audio** menu, the configuration should look like this:



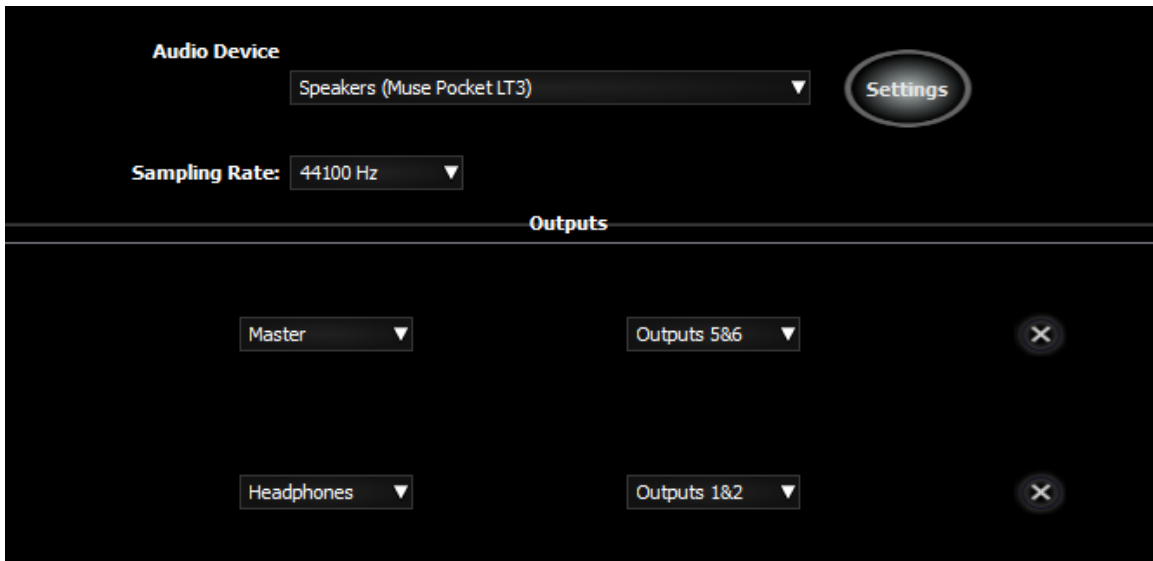
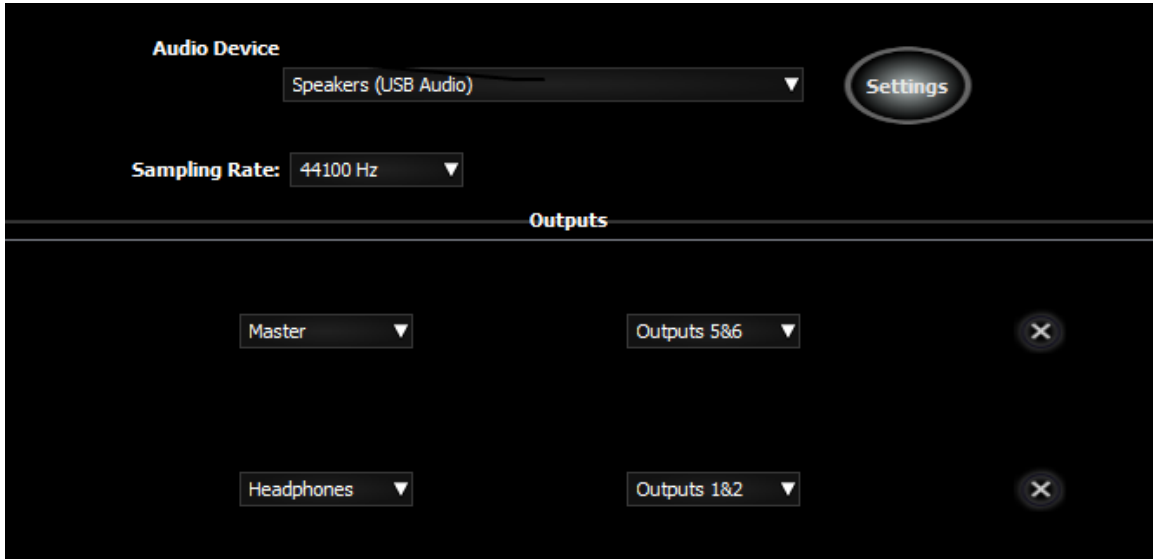
Audio Device: **USB audio** or **Muse Pocket LT3**

Master: **Output 5&6**

Headphone: **Output 1&2**



The process is the same when using **DJUCED 40°**, and the configuration should look like this:



The configuration is now complete. The Hercules Muse Pocket USB soundcard is now ready to be used with DJUCED.

