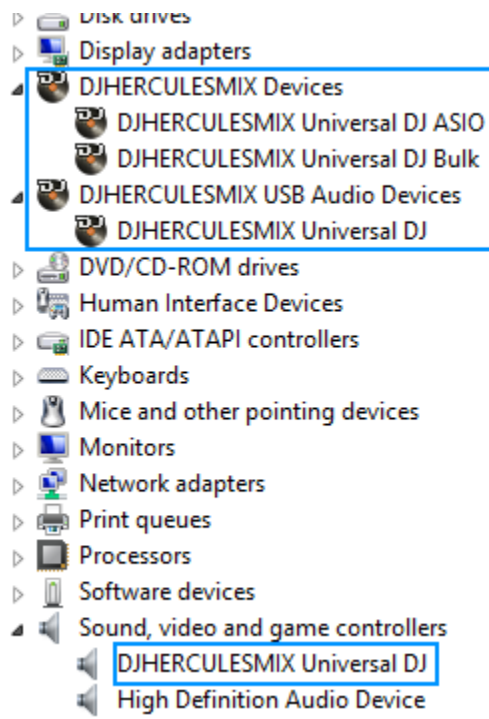


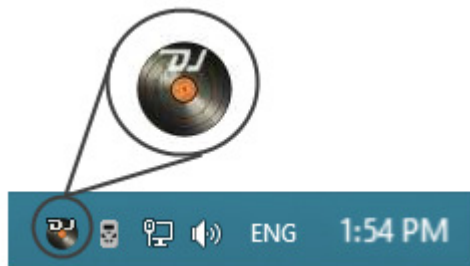
## How can I verify the DJHERCULESMIX Universal DJ is correctly installed on my PC?

First, we recommend that you use the latest driver version available from our [Technical Support](#) web site to proceed to the installation.

Once connected and installed, the different elements of your DJ controller should normally appear under the following categories in **Device Manager**:



The **DJ Console Control Panel** should also appear in the notification area (near the clock). It can also be accessed from Windows **Control Panel**.



The **ABOUT** tab provides information about the drivers currently installed. If you ever need to contact our technical support, be sure to have this information at hand.

